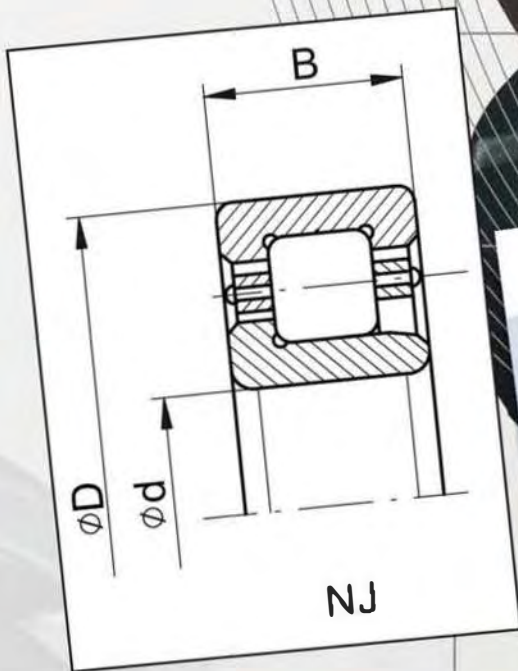


Cilindrično-valjkasti ležaji za šinska vozila (EN 12080)



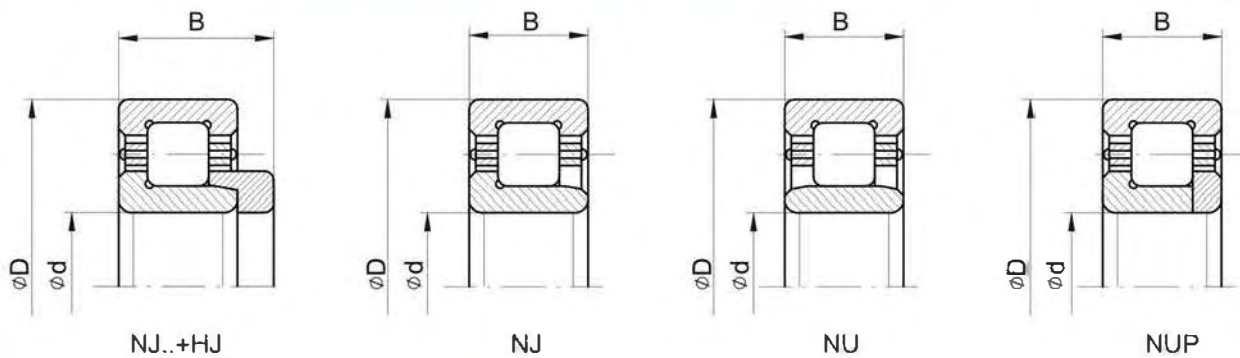
Stainless Steel



Cilindrično-valjkasti ležaji za šinska vozila

Cylindrical roller bearings for railroad vehicles

Zylinderrollenlager für Schienenfahrzeuge



Nazivne mere (mm) Boundary dimensions (mm) Hauptabmessungen (mm)			Nosivost Load ratings (kN) Tragfähigkeit (kN)		Oznaka Designation Lagertype	Masa Mass Masse
d	D	B	C(kN)	Co(kN)		kg
100	215	60	450	440	NJ 320 ECMC4/VA301+HJ 320E	8,52
100	215	47	450	440	NJ 320 ECMC4/VA301	7,65
120	260	55	610	620	NJ 324 ECMC4/VA301	14
130	280	58	627	837	NU 326 ECMC4/VA301	18,5
150	270	45	446	626	NUP 230 ECMC3/VA301	10,5
180	280	46	336	478	NU 1036 MC3/VA301	10,5