

LF37 diaphragm pressure switch

LEFOO

LF37 diaphragm pressure switch is available for various sumps, effluent, and sewage application to control the liquid level. Various switch settings are available for to turn-on or turn-off the pump. The diaphragm pressure sensing design make it more reliable than traditional float ball mechanism.

Specification

Model	LF37
Medium	Air, Water or other Non-hazardous liquid
Basic function	Diaphragm Pressure switch operation: provide water level signals to appliance control, level value can be set on customer request
Pressure Range/ liquid level Range	2-60 inch/H ₂ O
Proof Pressure	5PSI
Contact Type	SPDT, SPST-NC/NO
Electrical data	12/13.8A, 125VAC 10A, 250VAC 1/2HP, 125/250VAC 3/4HP, 125/250VAC
Ambition Temperature	40℃
Terminal	6.3×0.8 blade, #8-32 screws

Conversion: 1mbar=100pa 1"W.C.=249pa

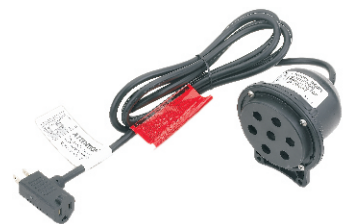
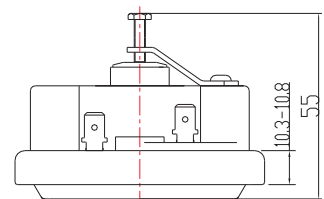
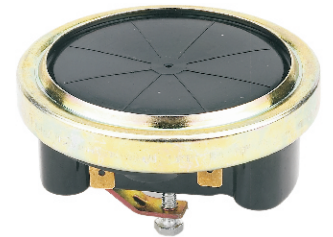
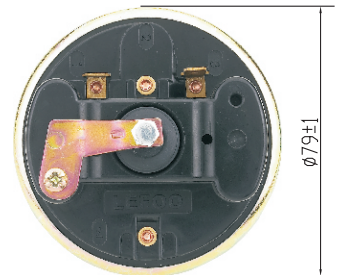
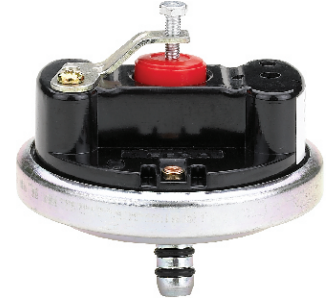
LF37 Order Ref No:

i.e.: LF37-111-4.5" - 6" H₂O

- Pressure setting: Cut in: 6" H₂O Cut off: 4.5" H₂O
- Cover: With Cover
- Contact Arrangement: SPDT
- Connection Type: Diaphragm

Number	Connection Type	Contact Arrangement	Cover
0	/	/	None Cover
1	Diaphragm	SPDT	With Cover
2	φ 6mm for tube	SPST-NO	/
3	/	SPST-NC	/
4	/	/	/
5	/	/	/
6	/	/	/

CAUS
E228961



尺寸单位: mm
(Dimension in mm)