



# REFRIGERATOR SPARES

BULBS	311
COMPRESSORS	311-313
DEFROST TIMERS	313
DOOR ACCESSORIES	313-314
FRIDGE MOTORS	315
FAN MOTORS & ACCESSORIES	316-317
HEATERS	317
RELAYS	317-318
SERVICE ITEMS	318-321
THERMOSTATS - ATEA	321-322
THERMOSTATS - DANFOSS	322-323
THERMOSTATS - GENERAL ELECTRIC	323
THERMOSTATS - HOTPOINT	323-324
THERMOSTATS - ORLEX	324
THERMOSTATS - RANCO	324-326
MISCELLANEOUS	326-327



# Refrigerator Spares



## Bulbs

**Part No.** BULB 10W (PHILIPS/UEC)  
**2422** 230-240V E12 T22  
 US FRIDGES  
**Quantity** UNIVERSAL  
**1 X 16** SINGLE UNITS CAN BE SUPPLIED. PLEASE SPECIFY WHEN ORDERING



**Part No.** BULB 10W (PHILIPS)  
**4657** 230-240V E14 T25  
 UNIVERSAL  
**Quantity**  
**1**



**Part No.** BULB 15W (PHILIPS/UEC)  
**2423** 230-240V E14 T22  
 UNIVERSAL  
**Quantity** BOXED (PHILIPS) BULBS ARE AVAILABLE PART NO.5815 PACK QTY.10  
**1 X 16** SINGLE UNITS CAN BE SUPPLIED. PLEASE SPECIFY WHEN ORDERING



**Part No.** BULB 15W  
**2424** 230-240V T-CLICK BASE T25  
 UNIVERSAL  
**Quantity**  
**1 X 16** SINGLE UNITS CAN BE SUPPLIED. PLEASE SPECIFY WHEN ORDERING



**Part No.** BULB 25W (PHILIPS/UEC)  
**2425** 230-240V E14 T25  
 UNIVERSAL  
**Quantity**  
**1 X 16** SINGLE UNITS CAN BE SUPPLIED. PLEASE SPECIFY WHEN ORDERING



## Compressors

**Part No.** COMPRESSOR (R12)  
**5207** 1/5 HP ZEM/ELECTROLUX  
**Quantity**  
**1**



**Part No.** COMPRESSOR (R12)  
**5209** 1/8 HP ZEM/ELECTROLUX  
**Quantity**  
**1**



**Part No.** COMPRESSOR (R12)  
**5211** 1/12 HP ZEM/ELECTROLUX  
**Quantity**  
**1**



**Part No.** COMPRESSOR (R134A)  
**3943** 1/4 HP  
 SAMSUNG/EMBRACO  
**Quantity**  
**1** WHIRLPOOL REF.481236038753





# Refrigerator Spares



## Compressors

**Part No.**  
**9830**

**Quantity**  
**1**

COMPRESSOR (R134A)  
1/4 HP  
EMBRACO  
WHIRLPOOL REF.481281728661



**Part No.**  
**3945**

**Quantity**  
**1**

COMPRESSOR(R134A)  
1/5 HP  
SAMSUNG/EMBRACO  
WHIRLPOOL REF.481236038752



**Part No.**  
**3947**

**Quantity**  
**1**

COMPRESSOR (R134A)  
1/6 HP  
SAMSUNG/EMBRACO  
WHIRLPOOL REF.481236038751



**Part No.**  
**3948**

**Quantity**  
**1**

COMPRESSOR (R134A)  
1/8 HP  
SAMSUNG/EMBRACO  
WHIRLPOOL REF.481281729008



**Part No.**  
**9840**

**Quantity**  
**1**

COMPRESSOR (R134A)  
1/8 HP  
EMBRACO  
WHIRLPOOL REF.481281728664



**Part No.**  
**3954**

**Quantity**  
**1**

COMPRESSOR (R134A)  
1/10 HP  
SAMSUNG/EMBRACO  
WHIRLPOOL REF.481236038579/481936038701/481936058776



**Part No.**  
**5108**

**Quantity**  
**1**

COMPRESSOR (R600)  
1/4HP  
ASPERA  
WHIRLPOOL REF.481236038668



**Part No.**  
**5109**

**Quantity**  
**1**

COMPRESSOR (R600)  
1/5 HP  
ASPERA  
WHIRLPOOL REF.481236038651



**Part No.**  
**5110**

**Quantity**  
**1**

COMPRESSOR (R600)  
1/6 HP  
ASPERA  
WHIRLPOOL REF.481236038704





# Refrigerator Spares



## Compressors

**Part No.**  
**5111**

**Quantity**  
**1**

**COMPRESSOR (R600)**  
1/8 HP  
ASPERA  
WHIRLPOOL REF.481236038621



**Part No.**  
**5113**

**Quantity**  
**1**

**COMPRESSOR (R600)**  
1/10 HP  
ASPERA  
WHIRLPOOL REF.481236038706/481236038764



**Part No.**  
**3366**

**Quantity**  
**1**

**COMPRESSOR DRAIN COVER**  
UNIVERSAL



## Defrost Timers

**Part No.**  
**2600054**

**Quantity**  
**1**

**DEFROST TIMER**  
CREDA 86310/86506  
ENGLISH ELECTRIC EE57/30FF  
GENERAL ELECTRIC TCG10DNSTWW/TCG10DNSRWW  
HOTPOINT 8792P/8570P/8571P/8591A/8591P/8591W/8592P/FF68N/FF68P/FF61W/8792A/FF61P/FF60W  
FF64X/8592A/8594P/8792W/FF60P/FF60A/FF08P/FF07A/FF06P/FF07P/FF68S/FF61A/FF06W/FF64S  
FF64P/FF63X/FF63N/FZ64N/FF62W/FF62P/FF63P/FZ60A/FF06A/8592W/FF64N/FZ60P/FF62A/FZ63P  
RF07A/FZ64X/FZ64S/FZ64P/FZ63X/FZ63N/FZ60W



**Part No.**  
**3576**

**Quantity**  
**1**

**DEFROST TIMER**  
UNIVERSAL ELECTRONIC ADJUSTABLE DEFROST TIMER WITH TWO DIAL ADJUSTMENT CONFIGURATION THAT ALLOWS FOR THE SETTING OF ANY DEFROST FREQUENCY FROM 4 TO 12 HOURS AND ANY DEFROST TIME FROM 10 TO 35 MINUTES (230V)



**Part No.**  
**3577**

**Quantity**  
**1**

**DEFROST TIMER**  
PARAGON NON-ADJUSTABLE DEFROST TIMER WITH DEFROST FREQUENCY EVERY 8 HOURS FOR A PERIOD OF 20 MINUTES B1401-F-21 (230V)



## Door Accessories

**Part No.**  
**3419**

**Quantity**  
**1**

**DOOR HINGE KIT**  
INDESIT



**Part No.**  
**4132**

**Quantity**  
**1**

**DOOR HANDLE**  
UNIVERSAL (WHITE)





# Refrigerator Spares

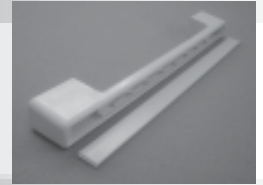


## Door Accessories

**Part No.**  
**3628**

**Quantity**  
**1**

**DOOR HANDLE**  
UNIVERSAL REFRIGERATORS  
WHITE  
FIXING HOLES APPROX 25-28CM APART



**Part No.**  
**6852**

**Quantity**  
**1**

**DOOR HINGE**  
BOSCH FF KIL162/KIL232/KIL1520/KIL2220/KIL15205/KIL22205/KIR172/KIR182/KIV242/KIV312/KIL282  
KIZ322  
CONSTUCTA FF CK4004  
SIEMENS FF K1153  
OEM REF.055099



**Part No.**  
**6901**

**Quantity**  
**1**

**DOOR HANDLE**  
BOSCH FF KDF3200/KDF7000/KGE2615/KGV3201/KSV2623  
  
OEM REF.096110



**Part No.**  
**2600114**

**Quantity**  
**1**

**DOOR HINGE LH**  
CANNON 50197G  
CREDA 86506/86402/86310/86316G/R289FW/86314/86301/86315/86307/86611/86411/86412/R118ZW  
ENGLISH ELECTRIC 2625W/2525W/EE57/35/EE35FZ/EE57/30FF  
GENERAL ELECTRIC TCG10DNSTWW/TCG10DNSRWW/RZ63JG/RZ13JG/FPG4/FPG4DSWW  
HOTPOINT 8709A/8751W/8642W/87612/83602/83604/83620/83622/27120/8553A/85294/85292/8709P  
85534/8550A/8550T/8550W/8551A/8551T/8642A/83624/8592A/8556A/8562A/8562P/8562W/8630W  
8570P/85532/8591A/8642P/8591W/85520/8592P/8592W/8594P/RZ10A/8630A/8630T/8564P/85522  
8555A/8591P/8732A/8750A/8750T/8750W/8632W/8751P/87122/8759P/87610/8551W/27121/8742A/8633P  
8759W/8634P/8631A/8634A/8631T/8633W/8633A/8631W/8709W/87250/85524/85530/83600/87120/85290  
8732W/8720T/8720W/8721A/8742W/8721W/8742P/87252/87254/8729A/8729P/8729W/8720A/8732P  
8759A/87124/8721P/FF60A/87652/87654/8792A/8792P/87634/FF61P/FF06A/FF06P/FF06W/FF07A/RZ60G  
FF08P/8764P/FF60P/FF60W/FF61A/8792W/RZ63S/RZ83X/RZ13N/RZ13P/RZ13X/RZ60A/FF07P/FF63X  
8571P/FZ60P/8554W/FF63X/FF62W/FF63N/FF62A/FZ63N/RF06A/FF62P/87650/FZ63P/8764W/RF07P  
FF61W/RF06PRF06W/RF07A/RF08P/87630/RF20A/87632/8764A/FZ60A/FF63P/RZ03P/RF60A/RF60P  
RF60W/RF61A/RF61W/RF20P/RF63P/RF63S/RF63X/RZ00P/RF23X/RZ03A/8554A/RZ03W/RZ04A/RZ04P  
RZ05P/RF61P/8553P/8553W/8554P/RZ60P/FZ60W/RZ01P/RZ83N/RF23P/RZ10P/RZ63G/RZ63T/RZ63U  
RZ63X/RZ80A/RZ80P/RZ60W/RZ63P/RZ63H/RZ80W/RZ83P/87614/8751A/RZ63N/RF63N/RF20W/RF21A  
RF21P/RF21W/RF23N/RZ10W  
JACKSON J288FW/J117ZW  
GENUINE DOOR HINGE RH AVAILABLE PART NO.2600115



2600114



2600115

**Part No.**  
**261216**

**Quantity**  
**1**

**DOOR SEAL (BROWN)**  
CREDA 86611/86203/86202N  
ENGLISH ELECTRIC 2625W/2525W  
HOTPOINT 8633W/27120/27121/8130W/83600/8132A/8633A/8132W/8221A/8221W/85294/8242W  
8551W/83602/83604/83622/8550A/8550W/85534/8551A/8551T/8550T/8562A/85292/8242A/85530  
8556A/8555A/8554W/8554A/8553W/8553A/85522/8591A/85524/8632W/8630A/8562W/8591W/8592A  
8592W/85520/83624/8630T/8630W/8631A/8631T/85532/87614/8642W/RZ60W/RF21A/8634A/87654  
87122/83620/8720A/8720T/8720W/8721A/RF60A/87250/87120/8642A/87252/87650/87612/87610  
8742W/87254/8729W/8729A/8742A/RF61A/8721W/FF62W/8792W/FF60A/FF60W/FF61A/FF61W/87124  
87652/8631W/FZ60A/FZ60W/RF20W/RF21W/8792A/RS60A/FF62A/RF60W/RS61W/RS60W/RL61W  
RL61A/RZ60A/RL60W/RL60A/RF61W/RF20A/RS61A



**Part No.**  
**282361**

**Quantity**  
**1**

**DOOR SEAL (WHITE)**  
CANNON 50197G  
CREDA 86301/86201/86506/86310/86402/86307/86202/86102/86102N/86202N/86203/86101  
ENGLISH ELECTRIC 2625W/2525W  
GENERAL ELECTRIC FPG4/FPG4DSWW/TCG10DNSTWW/TCG10DNSRWW  
HOTPOINT 8633P/8554P/8553P/8564P/85290/8592P/8571P/87250/27121/27120/8634P/8642P/8242P  
8562P/8221P/87614/8721P/87252/8729P/8594P/8742P/87122/87612/87254/87650/87652/87654  
8792P/FF60P/8570P/FF61P/RF60P/8591P/8132P/RS61P/RF20P/RF21P/87610/RF61P/RL60P/RL61P  
RS60P/RZ60P/87124/87120/FF62P/FZ60P





# Refrigerator Spares



## ■ Fridge Motors

**Part No.**  
**3241** FRIDGE MOTOR  
UNIVERSAL 5 WATT

**Quantity**  
**1** MOTOR CAN BE FOOT, TOP, FACE OR REAR MOUNTED  
3 TAPPED FIXING HOLES ON THE FRONT AND ON THE BACK



**Part No.**  
**3245** FRIDGE MOTOR  
UNIVERSAL 7 WATT

**Quantity**  
**1** MOTOR CAN BE FOOT, TOP, FACE OR REAR MOUNTED  
3 TAPPED FIXING HOLES ON THE FRONT AND ON THE BACK



**Part No.**  
**3246** FRIDGE MOTOR  
UNIVERSAL 10 WATT

**Quantity**  
**1** MOTOR CAN BE FOOT, TOP, FACE OR REAR MOUNTED  
3 TAPPED FIXING HOLES ON THE FRONT AND ON THE BACK



**Part No.**  
**6455** FRIDGE MOTOR  
UNIVERSAL 16W

**Quantity**  
**1** MOTOR CAN BE FOOT, TOP, FACE OR REAR MOUNTED  
3 TAPPED FIXING HOLES ON THE FRONT AND ON THE BACK



**Part No.**  
**6459** FRIDGE MOTOR  
UNIVERSAL 25 W

**Quantity**  
**1** MOTOR CAN BE FOOT, TOP, FACE OR REAR MOUNTED  
3 TAPPED FIXING HOLES ON THE FRONT AND ON THE BACK



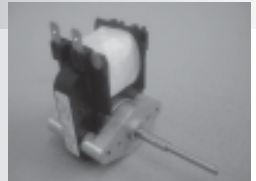
**Part No.**  
**4083** 'FROST FREE' FAN MOTOR (SPLINE SHAFT)  
UNIVERSAL WITH SCREW MOUNTING  
OCEAN/SANGIORGIO/LEC

**Quantity**  
**1**



**Part No.**  
**3882** 'FROST FREE' FAN MOTOR  
UNIVERSAL WITH SCREW MOUNTING  
OCEAN/SANGIORGIO/LEC

**Quantity**  
**1**



**Part No.**  
**3582** EVAPORATOR FAN MOTOR  
UNIVERSAL CLOCKWISE OR COUNTER CLOCKWISE ROTATION.  
PRE-FASTENED MULTI-FIT BREAK-OFF MOUNTING BRACKET. BREAK OFF MOTOR SHAFT. ALL  
MOUNTING ACCESSORIES AND HARDWARE INCLUDED. (230V 3000RPM 1/200 HP .31AMP)

**Quantity**  
**1**



**Part No.**  
**3368** 'FROST FREE' FAN MOTOR (SPLINE SHAFT)  
UNIVERSAL WITH CRADLE MOUNTING  
OCEAN/SANGIORGIO/LEC

**Quantity**  
**1**





## Fan Motors & Accessories

**Part No.**  
**3367**

FAN MOTOR  
BOSCH  
SIEMENS

**Quantity**  
**1**



**Part No.**  
**6461**

FRIDGE MOTOR BRACKET (52MM)  
UNIVERSAL

**Quantity**  
**1**



**Part No.**  
**6462**

FRIDGE MOTOR BRACKET (72MM)  
UNIVERSAL

**Quantity**  
**1**



**Part No.**  
**6469**

FRIDGE MOTOR BRACKET (84MM)  
UNIVERSAL

**Quantity**  
**1**



**Part No.**  
**6476**

FRIDGE MOTOR BRACKET (154MM)  
UNIVERSAL

**Quantity**  
**1**



**Part No.**  
**6478**

FRIDGE MOTOR FAN (D154MM)  
UNIVERSAL

**Quantity**  
**1**



**Part No.**  
**6480**

FRIDGE MOTOR FAN (D172MM)  
UNIVERSAL

**Quantity**  
**1**



**Part No.**  
**6499**

FRIDGE MOTOR FAN (D200MM)  
UNIVERSAL

**Quantity**  
**1**



**Part No.**  
**6514**

FRIDGE MOTOR FAN (D230MM)  
UNIVERSAL

**Quantity**  
**1**





# Refrigerator Spares



## Fan Motors & Accessories

**Part No.** FRIDGE MOTOR FAN (D254MM)  
**6586** UNIVERSAL

**Quantity**  
1



**Part No.** FRIDGE MOTOR FAN (D300MM)  
**6590** UNIVERSAL

**Quantity**  
1



## Heaters

**Part No.** HEATER  
**3758** 2 LEAD  
ELECTROLUX L36/RA42/RA43/RA52 MINI-BARS

**Quantity**  
1

OEM REF.343828-0/00



**Part No.** HEATER DRIP TRAY  
**2500134** CREDA 86603/86604/86607/86609/86613/86502/86606/86501/86610/86605  
HOTPOINT 8595P/8890P/8895P/8795P/8593P

**Quantity**  
1



## Relays

**Part No.** RELAY (NECCHI)  
**3130** REFRIGERATORS ES3  
1/12 HP COMPRESSORS

**Quantity**  
1

OEM REF.TRICITY 579659



**Part No.** RELAY (NECCHI)  
**3131** LARGE REFRIGERATORS/SMALL FRIDGE FREEZERS ES4  
1/8 HP COMPRESSORS

**Quantity**  
1

OEM REF.TRICITY 579661



**Part No.** RELAY (NECCHI)  
**3133** FRIDGE FREEZERS ES5  
1/6 HP COMPRESSORS

**Quantity**  
1

OEM REF.TRICITY 579673



**Part No.** RELAY - PUSH ON TYPE  
**3583** ONE SIZE FOR ALL COMPRESSORS 1/12 HP TO 1/2 HP. REPLACES ALL PUSH-ON CURRENT  
TYPE RELAYS. FOR USE ON COMPRESSORS WITH 'PIN TYPE' TERMINALS.  
CAN BE USED ON ALL CAPACITOR AND NON-CAPACITOR START MOTORS

**Quantity**  
1



**Part No.** RELAY - SNAP ON TYPE  
**3586** ONE SIZE FOR ALL COMPRESSORS 1/12 HP TO 1/2 HP. REPLACES MOST  
CURRENT TYPE RELAYS. CAN BE MOUNTED ON THE FENCE OF  
COMPRESSOR WITH QUICK 'SNAP-ON-BRACKET' OR INSTALLED BY USING SCREWS THROUGH  
MOUNTING HOLES. CAN BE USED WITH OR WITHOUT A START CAPACITOR

**Quantity**  
1







# Refrigerator Spares



## Relays

**Part No.** RELAY - PUSH ON TYPE  
**4762** TO FIT ALL COMPRESSORS 1/12 HP TO 1/2HP

**Quantity**  
1



**Part No.** RELAY  
**6851** DANFOSS 103N0011 TO FIT TL TYPE COMPRESSORS

**Quantity**  
1



**Part No.** RELAY  
**3673** DANFOSS 103N0015

**Quantity**  
1



**Part No.** RELAY  
**3675** DANFOSS 103N0002

**Quantity**  
1



**Part No.** RELAY  
**3856** DANFOSS 103N0021 (WITH 4.8MM TERMINALS)

**Quantity**  
1



**Part No.** RELAY & OVERLOAD COMBINATION  
**3587** 1/4 HP 1/3 HP  
REPLACES ALL 1/4 HP 1/3 HP HERMETIC REFRIGERATOR COMPRESSOR RELAY AND OVERLOAD UNITS. CAN BE USED IN CONJUNCTION WITH A START CAPACITOR.

**Quantity**  
1



**Part No.** RELAY & OVERLOAD COMBINATION  
**3588** 1/6 HP 1/5HP  
REPLACES ALL 1/6 HP 1/5 HP HERMETIC REFRIGERATOR COMPRESSOR RELAY AND OVERLOAD UNITS. CAN BE USED IN CONJUNCTION WITH A START CAPACITOR.

**Quantity**  
1



**Part No.** RELAY & OVERLOAD COMBINATION  
**3589** 1/12 HP 1/10 HP 1/8 HP  
REPLACES ALL 1/12 HP 1/10 HP 1/8 HP HERMETIC REFRIGERATOR COMPRESSOR RELAY AND OVERLOAD UNITS. CAN BE USED IN CONJUNCTION WITH A START CAPACITOR.

**Quantity**  
1



## Service Items

**Part No.** BULLET PIERCING VALVE  
**3488** TO SUIT 1/4" 5/16" 3/8" OD TUBING

**Quantity**  
1 PART No3573 AS ABOVE IN A COUNTER TOP DISPLAY PACK CONTAINING 48 VALVES





# Refrigerator Spares



## Service Items

**Part No.**  
**3085**

**GAS VALVE**  
TO BE USED WITH REFRIGERENT GAS BOTTLES TO AID RE GASSING

**Quantity**  
**1**



**Part No.**  
**4204**

**REFRIGERANT GAS (R134A)**  
1KG

**Quantity**  
**1**



**Part No.**  
**3845**

**CHANGEOVER VALVE (DANFOSS)**  
FOR SINGLE COMPRESSOR FRIDGE/FREEZERS  
TRICITY

**Quantity**  
**1**



**Part No.**  
**3374**

**ACCESS VALVE**  
FOR USE WITH 1/4" TUBING

**Quantity**  
**1**



**Part No.**  
**4296**

**DRYER**  
10 GRAM 3 WAY WITH ACCESS VALVE  
UNIVERSAL

**Quantity**  
**1**



**Part No.**  
**3590**

**CORE REMOVER**  
FOR USE WITH PART No.3374 ACCESS VALVE

**Quantity**  
**1**



**Part No.**  
**4496**

**FRIDGE DRYER**  
5 GRAM R12

**Quantity**  
**1**



**Part No.**  
**4497**

**FRIDGE DRYER**  
10 GRAM R12

**Quantity**  
**1**



**Part No.**  
**4498**

**FRIDGE DRYER**  
15 GRAM XH9

**Quantity**  
**1**





# Refrigerator Spares



## Service Items

**Part No.**  
**4499**

**FRIDGE DRYER**  
20 GRAM XH9

**Quantity**  
**1**



**Part No.**  
**4752**

**SERVICE DRYER**

**Quantity**  
**1**



**Part No.**  
**4757**

**LOCKRING CONNECTOR WITH SCHRADER VALVE**

**Quantity**  
**1**



**Part No.**  
**4759**

**SCHRADER VALVE (1/4) CHARGE PIPE**  
1/8 HP R134A CALEX

**Quantity**  
**1**



**Part No.**  
**4750**

**LOCKRING (5/2)**  
LARGE CAPILLARY

**Quantity**  
**1**



**Part No.**  
**4751**

**LOCKRING CONNECTOR (3/16-3/16)**

**Quantity**  
**1**



**Part No.**  
**4753**

**LOCKRING CONNECTOR (5/16-1/4)**

**Quantity**  
**1**



**Part No.**  
**4760**

**LOCKRING CONNECTOR (1/4-1/4)**

**Quantity**  
**1**



**Part No.**  
**4761**

**LOCKRING CONNECTOR (1/4-3/16)**

**Quantity**  
**1**





# Refrigerator Spares



## Service Items

**Part No.** LOCKRING CONNECTOR (7/5)  
**4763**  
**Quantity**  
1



**Part No.** LOCKRING CONNECTOR (7/5-6)  
**4765**  
**Quantity**  
1



## Thermostats - Atea

**Part No.** THERMOSTAT  
**5034**  
**Quantity**  
1  
ATEA A01-1001 (W1)  
ONE DOOR STANDARD REFRIGERATOR  
WITH COMPONENTS.  
COMPARES TO DANFOSS KIT 1/RANCO VC 1/WHIRLPOOL WPLW1



**Part No.** THERMOSTAT  
**5035**  
**Quantity**  
1  
ATEA 52-1000 (W2)  
ONE DOOR STANDARD REFRIGERATOR  
PUSH-BUTTON DEFROST COMPLETE  
WITH COMPONENTS  
COMPARES TO DANFOSS KIT 2/RANCO VP4/WHIRLPOOL WPLW2



**Part No.** THERMOSTAT  
**5036**  
**Quantity**  
1  
ATEA A03-1000 (W3)  
TWO DOOR FRIDGE/FREEZER  
WITHOUT AUTO DEFROST  
COMPLETE WITH COMPONENTS  
COMPARES TO WHIRLPOOL WPLW3



**Part No.** THERMOSTAT  
**5037**  
**Quantity**  
1  
ATEA A13-1000 (W4)  
TWO DOOR FRIDGE/FREEZER WITH  
AUTO-DEFROST  
COMPLETE WITH COMPONENTS  
COMPARES TO DANFOSS KIT 3/RANCO VT 9/WHIRLPOOL WPLW4  
**THERMOSTAT WITHOUT COMPONENTS AVAILABLE PART NO.5038**



**Part No.** THERMOSTAT  
**5040**  
**Quantity**  
1  
ATEA A13-1000 (W4)  
TWO DOOR FRIDGE/FREEZER WITH  
AUTO-DEFROST AND EXTRA LONG CAPILLARY FOR TALL CABINETS  
COMPLETE WITH ALL COMPONENTS  
COMPARES TO RANCO VT 9-VT 93/WHIRLPOOL WPLW4/2



**Part No.** THERMOSTAT  
**5042**  
**Quantity**  
1  
ATEA A01-1000 (W5)  
FREEZER NO SIGNAL  
COMPLETE WITH COMPONENTS  
COMPARES TO DANFOSS KIT 5/RANCO VF 3/WHIRLPOOL WPLW5



**Part No.** THERMOSTAT  
**5044**  
**Quantity**  
1  
ATEA A04-1000 (W6)  
FREEZER WITH SIGNAL  
COMPLETE WITH COMPONENTS  
COMPARES TO DANFOSS KIT 6/RANCO VS5/WHIRLPOOL WPLW6





# Refrigerator Spares



## Thermostats - Atea

**Part No.**  
**9901**

**Quantity**  
**1**

**THERMOSTAT**  
ATEA A01-1003 W7  
COMPARES TO DANFOSS KIT 8

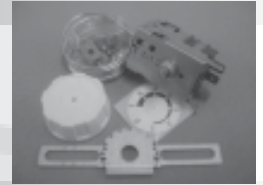


## Thermostats - Danfoss

**Part No.**  
**4217**

**Quantity**  
**1**

**THERMOSTAT**  
DANFOSS KIT 1  
STANDARD FRIDGES



**Part No.**  
**4202**

**Quantity**  
**1**

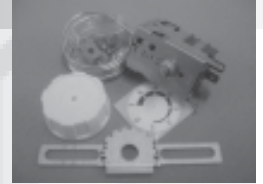
**THERMOSTAT**  
DANFOSS KIT 2  
FRIDGES 'PUSH BUTTON' DEFROST



**Part No.**  
**4209**

**Quantity**  
**1**

**THERMOSTAT**  
DANFOSS KIT 3  
2 DOOR FRIDGE FREEZERS AUTOMATIC DEFROST



**Part No.**  
**4220**

**Quantity**  
**1**

**THERMOSTAT**  
DANFOSS KIT 4  
ABSORPTION REFRIGERATORS



**Part No.**  
**4221**

**Quantity**  
**1**

**THERMOSTAT**  
DANFOSS KIT 5  
FREEZER 'NO SIGNAL'



**Part No.**  
**4222**

**Quantity**  
**1**

**THERMOSTAT**  
DANFOSS KIT 6  
FREEZER 'ACTIVE SIGNAL'



**Part No.**  
**4224**

**Quantity**  
**1**

**THERMOSTAT**  
DANFOSS KIT 7  
FREEZER 'PASSIVE SIGNAL'



**Part No.**  
**3771**

**Quantity**  
**1**

**THERMOSTAT**  
DANFOSS KIT 8  
FREEZER 'PASSIVE SIGNAL'





# Refrigerator Spares



## Thermostats - Danfoss

**Part No.**  
**6917**

**Quantity**  
**1**

**THERMOSTAT**  
DANFOSS KIT 29/59  
FREEZER 'PASSIVE SIGNAL'



**Part No.**  
**4381**

**Quantity**  
**1**

**THERMOSTAT**  
DANFOSS KIT 53  
FOR LARDER REFRIGERATORS  
REQUIRING HIGHER CUT-OUT  
TEMPERATURES  
CUT IN +3.5C CUT-OUT -5C TO -15C



## Thermostats - General Electric

**Part No.**  
**6609**

**Quantity**  
**1**

**THERMOSTAT**  
GENERAL ELECTRIC KIT ID  
1 DOOR REFRIGERATORS 2 CONTACTS  
EQUIVALENT TO ATEAA551/DANFOSS KIT 1/RANCO VC1  
WARM ON - 1.0C <> 1.5C WARM OFF - 7.5C <> 1.5C  
COLD ON - 14C <> 1.5C COLD OFF - 25.5C <> 1.5C (CAPILLARY 1200MM)



**Part No.**  
**6610**

**Quantity**  
**1**

**THERMOSTAT**  
GENERAL ELECTRIC KIT 2D  
2 DOOR REFRIGERATORS 3 CONTACTS  
EQUIVALENT TO ATEAAS41/DANFOSS KIT 3/RANCO VT9/VL9  
WARM ON 3.0C <> 1.5C WARM OFF - 11C <> 2.5C  
COLD OFF - 28C <> 2.0C (CAPILLARY 1200MM)



**Part No.**  
**6613**

**Quantity**  
**1**

**THERMOSTAT**  
GENERAL ELECTRIC KIT 2D  
2 DOOR REFRIGERATORS 3 CONTACTS  
EQUIVALENT TO ATEAAS41/DANFOSS KIT 3/RANCO VT9/VL9  
WARM ON 3.0C <> 1.5C WARM OFF - 11C <> 2.5C  
COLD OFF - 28C <> 2.0C (CAPILLARY 1200MM)



**Part No.**  
**6631**

**Quantity**  
**1**

**THERMOSTAT**  
GENERAL ELECTRIC KIT F1E  
FREEZER/ALARM 3 CONTACT  
EQUIVALENT TO ATEAA56/DANFOSS KIT 6/RANCO V55  
WARM ON - 10.2C <> 1.5C WARM OFF - 13.7C <> 1.5C  
COLD ON - 4.2C <> 1.5C COLD OFF 34.0C <> 2.0C (CAPILLARY 1000MM)



**Part No.**  
**6640**

**Quantity**  
**1**

**THERMOSTAT**  
GENERAL ELECTRIC KIT 2DR  
2 DOOR REFRIGERATORS 3 CONTACTS  
WITH HEATH 82K OHM  
EQUIVALENT TO RANCO VTD9  
WARM ON + 5.0C <> 1.5C WARM OFF - 12C <> 2.5C



## Thermostats - Hotpoint

**Part No.**  
**2600283**

**Quantity**  
**1**

**THERMISTOR (FRZ GREEN)**  
CANNON 50195G  
CREDA R335NW  
**GENERAL ELECTRIC** TCG12DYZ73WWW/TCG12ZYT55WWW/TCG12ZYZ73WWW/TCG12ZYC73SB  
TCG12ZYC73WWW/TCG12ZYT73WWW/TCG12DYY73WWW/TCG12ZYZ73BB/TCG12ZYZ73SB  
TCG12ZYY73BB  
**HOTPOINT** FF65P/8596A/8596F/8496C/8496D/8496F/8496G/8496N/8496S/8496A/8496Z/8596Z  
8596D/FF50P/8596G/8596C/8696N/8696F/8996P/8976P/8696Z/8696X/8696W/8696P/8696G  
FF50A/FF71N/FF65N/8696C/FF73N/8496W/FF50W/8596N/FF72P/FF65S/8696A/FF71P/FF71S  
FF72N/FF72S/8696D/FF91LV/FF91YS/FF78N/FF78P/FF78S/FF80A/FF80C/FF80D/FF80F/FF80G  
FF73PE/FF91S/FF91P/FF91BL/FF80Z/FF80W/FF80S/FF80P/FF80X/8596P/8496P/FF91TC/FF80N  
FF93BL/FF92LV/FF92N/FF92P/8596S/8596W/8596X/FF91N/FF93YS/8496X/FF92YS/FF92TC  
FF93LV/FF93N/FF93P/FF92BL/FF93S/FF73P/FF93TC/FF73S/FF92S





# Refrigerator Spares



## Thermostats - Hotpoint

**Part No.**  
**2601683**

**Quantity**  
**1**

**THERMISTOR (EVAP)**  
**CANNON** 50195G  
**CREDA** R335NW  
**GENERAL ELECTRIC** TCG12DYZ73WW/TCG12ZYC73WW/TCG12ZYZ73SB/TCG12ZYT55WW  
 TCG12ZYT73WW/TCG12ZYY73BB/TCG12ZYZ73BB/TCG12ZYZ73WW/TCG12ZYC73SB  
 TCG12DYY73WW  
**HOTPOINT** FF73PE/FF73P/8496A/8496C/8496D/8496F/8496G/8496N/8496P/8596F/FF65S/8496X  
 8696C/8596A/8596D/8596G/8496S/8696N/FF91N/8976P/8696Z/8696X/8696W/8596N/8696P/8996P  
 8696G/FF50A/FF71P/8696F/8496Z/FF50P/FF50W/FF65N/FF65P/FF71N/FF71S/8696D/FF72P/8596C  
 FF72N/FF72S/FF80Z/FF93YS/FF78S/FF92LV/FF80C/FF80D/FF80F/FF80G/FF80N/FF78P/FF80W/FF80S  
 FF92BL/FF91LV/FF91P/FF91S/FF91YS/FF80X/8596P/FF91BL/FF80P/8596W/FF91TC/8596S/FF78N  
 8596X/8596Z/8696A/8496W/FF92P/FF92S/FF92TC/FF92YS/FF73S/FF73N/FF93S/FF92N/FF93TC/FF93N  
 FF93LV/FF93BL/FF93P/FF80A



**Part No.**  
**261055**

**Quantity**  
**1**

**THERMOSTAT**  
**CREDA** R153LW/86201/86202/86203/86204/86205/86206G/86402/86611  
**ENGLISH ELECTRIC** EE53L/2525 JACKSON J152LW  
**HOTPOINT** 8109/8112/8120/8123/8126/8127/8128/8129/8130/8132/8550/8551/8553/8554/8555/8556  
 8562 8570/8571/8591/8592/21160/21161/81160/81162/81164/81170/8117281174/81190/81192/81194  
 85530/RL00/RL01/RL03/RL04/RL10/RL11/RL13/FF60/RL60/RL61/RL63/RL64/RL65



**Part No.**  
**282040**

**Quantity**  
**1**

**THERMOSTAT**  
**CANNON** 50196G  
**CREDA** 86405N/86401/R232FW/86401I/86405/86407/86410/86407N  
**GENERAL ELECTRIC** TB8DRTWH/TB8DRRWHTB10DRRWHTCG10DNSRWWW/TDG8DNYWWW  
 TDG8DNXWWW/TDG8DNTWWW/TDG8DNCWWW/TDG10DNYWWW/TDG10DNXWWW/TDG10DNTWWW  
 TDG10DNCWWW/TCG10DNSTWWW/TB10DRTWWW  
**HOTPOINT** 8320T/8322A/83230/23231/8326A/8325W/8324W/8324T/8324A/8321A/83292/23100  
 8340A/8320A/83234/8320W/83232/8321T/8321W/83220/23080/8329W/8326P/8342A/8341W  
 8341P/8341A/83414/83412/83410/8332A/8340T/83294/8342P/83440/8340W/8362W/RF14S  
 83222/8370/8372/8342W/8362P/8362A/83444/83442/8332W/RF04A/RF11A/RF10W/RF10P  
 RF10A/RF13N/RF03W/RF09P/RF03A/RF19S/RF01P/RF04P/RF11P/RF18P/RF19P/RF19N/RF13NE  
 8326W/RF14X/RF00P/RF14N/RF14P/RF13P/RF14NE/RF13X/RF18N/RF18S/8328W/RF14PE/RF11W  
 8327A/8327P/8328P/83290/RF53N/RF50A/RF54X/RF54S/RF54PE/RF54P/RF54N/RF51A/8332P  
 8327W/RF58N/RF50P/RF58P/RF50W/RF53X/RF51P/RF51W/RF58S/RF53P/RF03P



**Part No.**  
**282241**

**Quantity**  
**1**

**THERMOSTAT**  
**HOTPOINT** 25120/8141A/RL81P/8141P/81192/8140A/8140T/8140W/8149A/8149P/8149W/RL80A  
 8154W/8154A/8141W/25100/RL80PE/8154P/RL81A/RL81W/RL83N/RL88P/RL83P/RL83X/RL84P  
 RL84PE/RL84S/RL84X/RL88N/RL88S/RL80P/RL80W/RL84N



## Thermostats - Orlex

**Part No.**  
**3644**

**Quantity**  
**1**

**THERMOSTAT - KIT D**  
 ABSORBTION REFRIGERATORS 3°C/-18°C  
 COMPARES TO DANFOSS KIT /RANCO VA2



**Part No.**  
**3632**

**Quantity**  
**1**

**THERMOSTAT - KIT G**  
 FRIDGE/FREEZER WITH EXTRA LONG CAPILLARY  
 COMPARES TO RANCO VT3



## Thermostats - Ranco

**Part No.**  
**4182**

**Quantity**  
**1**

**THERMOSTAT - RANCO VC1 KIT**  
 COMPRESSOR REFRIGERATOR  
 COLD OUT -23°C COLD IN -14.4°C WARM IN +2°C  
 CAPILLARY LENGTH 1200MM





# Refrigerator Spares



## Thermostats - Ranco

**Part No.**  
**4189**

**Quantity**  
**1**

**THERMOSTAT - RANCO VT9/VL9 KIT**  
FRIDGE/FREEZERS 'AUTO DEFROST' 2 TEMPERATURE  
COLD OUT -26°C WARM OUT -11°C DEFROST TERMINATION +3.5°C\*  
\* CONSTANT CUT IN  
CAPILLARY LENGTH 1200MM



**Part No.**  
**4183**

**Quantity**  
**1**

**THERMOSTAT - RANCO VS5 KIT**  
FREEZER 'ACTIVE SIGNAL'  
COLD OUT -34°C WARM OUT -16.5°C WARM IN -12°C  
SIGNAL OPERATION CUTS IN 5°C ABOVE CUT IN  
CAPILLARY LENGTH 2000MM



**Part No.**  
**3888**

**Quantity**  
**1**

**THERMOSTAT - RANCO (FROM VT9/VL9 KIT)**  
RANCO K59L1102002 FRIDGE/FREEZERS 'AUTO DEFROST'  
2 TEMPERATURE 1200MM CAPILLARY  
COLD OUT -26°C WARM OUT -11°C CONSTANT IN +3.5°C



**Part No.**  
**4192**

**Quantity**  
**1**

**THERMOSTAT - RANCO VXO KIT**  
LARDER FRIDGE  
COLD OUT -15°C WARM OUT -5°C DEFROST TERMINATION +3.5°C\*  
\* CONSTANT CUT IN  
CAPILLARY LENGTH 1500MM  
THE VXO OPERATES IN A SIMILAR WAY TO THE VT9/VL9 GIVING A DEFROST ON EVERY SWITCHING CYCLE. THE TEMPERATURE SETTING RANGE IS HIGHER THAN THE VT9/VL9 IN ORDER TO PREVENT OVER FREEZING OF THE CABINET



**Part No.**  
**3269**

**Quantity**  
**1**

**THERMOSTAT - RANCO VF3/VL3**  
FREEZER/ICE CREAM CABINET 'NO SIGNAL'.  
CAPILLARY LENGTH 2000MM  
COLD OUT -34C WARM OUT -16.5C  
WARM IN -12C



**Part No.**  
**3293**

**Quantity**  
**1**

**THERMOSTAT - RANCO VT3/VT93**  
FRIDGE/FREEZER WITH EXTRA LONG CAPILLARY  
CAPILLARY LENGTH 3000MM  
COLD OUT -26C WARM OUT -11C  
DEFROST TERMINATION +3.5C (CUT IN)



**Part No.**  
**3298**

**Quantity**  
**1**

**THERMOSTAT - RANCO VT9D**  
SETTING RANGE -25.5C TO -14C WITH A CONSTANT CUT IN AT +5C  
THE VTD9 OPERATES IN A SIMILAR WAY TO THE VT9, GIVING A DEFROST ON EVERY CYCLE.  
THE THERMOSTAT IS FITTED WITH A SPDT (CHANGEOVER) SWITCH WHICH ENABLES THE DEFROST ASSISTANCE TO BE SWITCHED ON DURING THE DEFROST PERIOD.



**Part No.**  
**5018**

**Quantity**  
**1**

**THERMOSTAT**  
UNIVERSAL  
FROST FREE CABINETS  
RANCO K52L536000







# Refrigerator Spares



## Thermostats - Ranco

**Part No.**  
**5056**

**Quantity**  
**1**

**THERMOSTAT - RANCO VT9R**  
FRIDGE/FREEZERS AUTO DEFROST  
WHERE THE ORIGINAL THERMOSTAT HAS AN INTERNAL HEATING RESTRICTOR  
CAPILLARY LENGTH 1200MM  
COLD OUT -20C WARM OUT -8C COLD IN +3.5C  
RANCO K59P3153

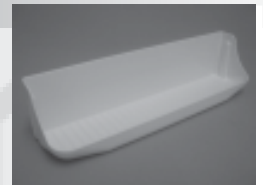


## Miscellaneous

**Part No.**  
**2600103**

**Quantity**  
**1**

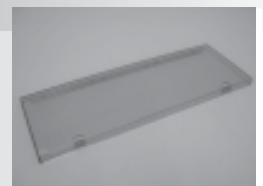
**BOTTLE RACK**  
418MM  
**CREDA** 86102N/86201/86102/86202N/86407/86405/86402/86101/86611/86506/86401  
**ENGLISH ELECTRIC** 2525W/2625W  
**GENERAL ELECTRIC** TB10DRRWHTD/8DNTWW/TDG10DNTWW/TCG10DNSTWW/TCG10DNSRWW  
TB8DRTWH/TB8DRRWHTB10DRTWW  
**HOTPOINT** 8129A/8129P/8120A/8120W/81170/8123W/8126A/8126P/8149P/8126W/83620/8127P/8127W  
8128P/8120T/8332P/8221P/8149A/8220W/8220T/8220A/82164/81194/21160/21161/22160/81190/23231  
8129W/82162/8221W/81160/82160/8154W/8154P/8154A/81162/81164/81192/22161/8326P/8329W  
8242P/8242W/8320A/8320T/8320W/8321A/83292/8321W/8328P/8324W/82284/8326W/82282/8321T  
8325W/83222/8324T/8324A/83234/83232/83230/8322A/8326A/8141W/8130W/8327W/8341P/8341A  
83290/8221A/83294/8332A/8332W/8340A/8340T/8340W/83410/82280/8242A/8328W/81172/8341W  
8342A/8342P/8342W/83440/83442/83444/83600/83602/83604/83412/83220/83414/8551W/8362W/8370  
RF01P/85290/8631W/85294/8550A/8550T/85292/8550W/8554W/83624/85520/85522/85524/85530  
85532/85534/8553A/8553P/8553W/8554A/8551A/8592P/8132P/8592A/8591W/8591P/8591A/8571P  
8570P/8564P/8562P/8562A/8362P/8631T/8362A/8592W/8630A/8630T/8630W/8631A/8372/8555A  
8594P/8551T/RL80W/8556A/RF20A/RF50A/8632W/FF60A/FF60P/FF60W/FF61A/FF61P/RF00P/81174  
RF10A/8554P/RF10W/8634P/8642W/8149W/8141P8132A/8562W/8132W/8140A/8140T/8140W/8141A  
RF10P/RL80PE/FF61W/RF50P/RF50W/RF60A/RF60P/RF60W/RL60A/RL60P/RL60W/8642P/RF20W  
8642A/RF20P/RS60A/RS60P/RS60W/83622/RL80P/8633A/8633P/8633W/8634A/RL80A



**Part No.**  
**2600178**

**Quantity**  
**1**

**FRONT FOR BASKET**  
**CANNON** 50197G  
**CREDA** 86506/86402/86611  
**ENGLISH ELECTRIC** 2625W/2525W  
**GENERAL ELECTRIC** FPG4/FPG4DSWW/TCG10DNSTWW/TCG10DNSRWW  
**HOTPOINT** 8759P/83624/83600/8721A/8551W/8553A/83604/8592P/RF20A/83622/8555A/8631T/85290  
85530/85534/8551T/8551A/8553W/8554W/27120/8556A/8562A/8562P/8562W/8553P/83620/8554P  
8630T/8594P/8720T/8591P/8571P/8592A/8592W/8630W/8630A/27121/8631A/85524/8631W/8632W  
8591A/8633A/8591W/8642P/8550A/8550T/8550W/83602/8633W/8634A/8642W/8642A/8720W/8633P  
87124/87120/87122/8720A/8570P/85294/8634P/87252/87610/RF20W/87250/FF60A/87254/8751A  
8729P/8792W/8742A/8759A/8742W/8750A/8750T/8750W/8729A/87612/85520/RF21A/8764P/87614  
87630/87632/8792P/8764A/8759W/8764W/87650/87652/87654/8792A/8742P/87634/8751W/FF61W  
FF62A/FF62P/RF21W/RF21P/FZ60A/FF61P/RF20P/FZ60P/FF60P/FF62W/8751P/8721W/8564P/8554A  
FZ60W/RF61W/8729W/8721P/RF60P/RF60W/RF61A/RZ60P/RF61P/RF60A/RZ60G/RZ60W/RZ80A  
RZ80P/RZ80W/RZ60A/FF60W/FF61A





## Miscellaneous

**Part No.**  
**2600207**

**Quantity**  
**1**

**MODULE CONTROL**  
**1/10 HP R600**

**CANNON 50195G**

**GENERAL ELECTRIC** TCG12ZY73WWW/TCG12ZYC73WWW/TCG12ZYT73WWW/TCG12ZYY73BB  
TCG12ZYC73SB/TCG12ZY73SB/TCG12ZY73BB

**HOTPOINT** 8596Z/FF73S/8596P/8596W/8596G/8596S/8996P/8596X/FF72S/8596F/FF80D/8976P  
FF80A/FF73N/FF80C/FF72P/FF72N/FF71S/FF71N/8596D/FF91BL/FF73PE/FF71P/FF80N/FF80W  
FF91YS/FF80S/FF91LV/8596C/FF80X/FF92BL/FF80P/FF80Z/FF92LV/8596N/FF91TC/FF92TC  
FF80F/FF93TC/FF80G/FF73P/FF93YS/FF93LV/FF93BL/FF92YS/8596A



**Part No.**  
**2601909**

**Quantity**  
**1**

**PLASTIC FOOT**

**CREDA** R153LW/R289FW/R118ZW

**HOTPOINT** FF68S/RF58N/FZ78S/FF64P/RF68N/FF64S/FZ78N/FF07P/FF68N/FF68P/FF08P/FZ65N  
FZ65P/FZ65S/FF64N/FZ65YS/RF04P/FZ78P/RZ84S/FZ78YS/RF07P/RF08P/RF09P/RF14NE

RL64X/FZ65X/RF14PE/RF24N/RF19S/RF19P/RF19N/RF18S/RF18P/RF14S/RF14P/RF24P/RF58S  
RF64X/RF18N/RF24X/RF28N/RF28P/RF28S/RF54N/RF64YS/RF58P/RF14N/RF64N/RF64P/RF64S

RF24S/RL84X/RZ64P/RL64U/RL88P/RF68S/RL04A/RL04P/RL05P/RL64P/RF68YS/RL64YS/RL65N  
RF68P/RL84P/RL65YS/RL64S/RL65S/RL84PE/RL84N/RL88N/RL78YS/RL78S/RL78P/RL78N

RZ64T/RL84S/RL64T/RL65P/RS64N/RZ84N/RS05P/RS64P/RS64S/RS68N/RS68P/RS68S/RZ04P

RZ05P/RZ64H/RZ64N/RL88S/RZ68S/RS04P/RZ64S/RZ68YS/RZ88N/RZ68P/RZ68N/RZ64YS

RZ64U/RZ88P/RZ88S/RZ84P

**JACKSON** J152LW/J288FW





Dryers

### Dryer

Part No.9917

XH9 10 Gram  
2.5 - 6.5mm



### Dryer

Part No.9918

XH9 10 Gram  
4.76 - 4.5mm



### Dryer

Part No.9919

XH9 15 Gram  
2.5 - 6.5mm



### Dryer

Part No.9920

XH9 15 Gram  
2.5 - 4.9mm



Motor

### Motor

Part No.9980

Fridge Fan Motor  
**Universal**  
34w



Service Items

### Refrigerator Gas

Part No.2510

R600a  
Net Weight 420g



### Powder Flux

Part No.9939

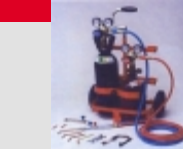
800g  
Suitable for joining ferrous metals, stainless steel, copper bearing alloys and nickel bearing alloys.



### Portable Brazing Kit

Part No.9940

Kit contains the following items:-  
Trolley - Oxygen Gauge - Acetylene Gauge - Oxygen Flashback Arrestor  
Acetylene Flashback Arrestor - Oxygen/Acetylene Hose - Brazing Torch  
Brazing Nozzles - Bottle Key - Spark Lighter - Spare Flints



### Brazing Rod

Part No.9937

Brazing Rods (1.5mm)  
40% Silver  
Flux Coated



### Brazing Rod

Part No.9938

Brazing Rods (2mm)  
40% Silver  
Flux Coated



### Brazing Rod

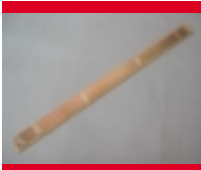
Part No.9935

Brazing Rods (2mm)  
Copper, 2% Silver  
Flux Coated





# Refrigerator Spares



## Brazing Rod

**Part No.9936**

Brazing Rods (2mm)  
Copper, 2% Silver  
Flux Coated



## Thermostat VS1

**Part No.8779**

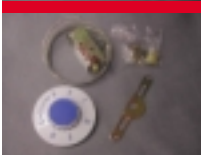
**Universal:** Compressor refrigerator:  
Cold out -23c, Cold in -14.4c, Warm in +2c.  
Capillary length 1200mm



## Thermostat VS5

**Part No.8780**

**Universal:** Freezer 'Active signal',  
Cold out -34c, Warm out -16.5c, Warm in -12c.  
Signal operation cuts in 5c above cut in.  
Capillary length 2000mm



## Thermostat VT9

**Part No.8781**

**Universal:** Fridge/Freezers 'Auto defrost' 2 temperature.  
Cold out -26c, Warm out -11c, Defrost termination +3.5c\* (\*constant cut in).  
Capillary length 1200mm



## Valve (Magnet)

**Part No.9912**

**Whirlpool** AGB022-01-WP, AGB022-WP, AGB022-G-WP, AGB024-G-WP

Oem ref.481928128224



## Valve (Magnet)

**Part No.9913**

**Whirlpool** AGB024-01-G-WP, AGB024-WP, AGB024-G-WP

Oem ref.481928128225

Valves