



Manometers with measuring membrane

Type:
11MT 63M R
11MT 63M AC
11MT 100M R
11MT 100M AC

Mounting

Radial (R)
Central axial stub (AC)

Usage

For measuring of pressure and vacuum of non - crystallizing gasses, not-aggressive copper and copper alloys.

Nominal dimensions (ND)

63, 100 mm

Class of precision

ND63 - 1,6
ND100 - 1,6

Measurement ranges

kPa	mbar
0 ... 2,5	0 ... 25
0 ... 4	0 ... 40
0 ... 6	0 ... 60
0 ... 10	0 ... 100
0 ... 16	0 ... 160
0 ... 25	0 ... 250
0 ... 40	0 ... 400
0 ... 60	0 ... 600
-2,5 ... 0	-25 ... 0
-4 ... 0	-40 ... 0
-6 ... 0	-60 ... 0
-10 ... 0	-100 ... 0
-16 ... 0	-160 ... 0
-25 ... 0	-250 ... 0
-40 ... 0	-400 ... 0
-60 ... 0	-600 ... 0

Mano - vacuum – meters – the sum from the absolute values of the pressure and vacuum = 2,5; 4; 6; 10; 16; 25; 40 and 60 kPa.

Recommended measuring values

At static loads - 3/4 from the scale range
At pulsing loads - 2/3 from the scale range
At a brief measuring - the scale range

Permitted temperatures

Ambient $T_{min} - 20^{\circ}C$ $T_{max} + 60^{\circ}C$
Of the measured fluid $T_{max} + 100^{\circ}C$

Stub-types

Brass, radial (bottom connection) or central axial (rear connection) with mounting thread and wrench number :

ND63 - M12x1,5 (G 1/4") SW 14
ND100 - M20x1,5 (G 1/2") SW 22

Measuring element

Alloyed copper, measuring membrane

Driving mechanism

Alloyed copper

Corrector of the "O" (zero) position of the arrow

Front view through the dial



Dial

aluminium, white
graduation - black

Arrow

aluminium, black

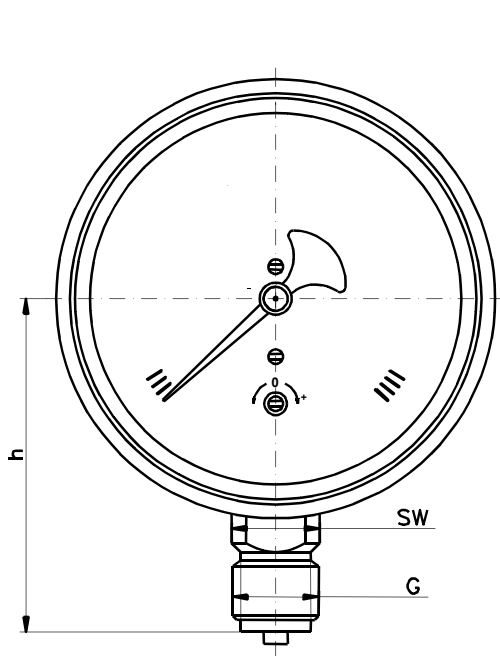
Box

CrNi steel

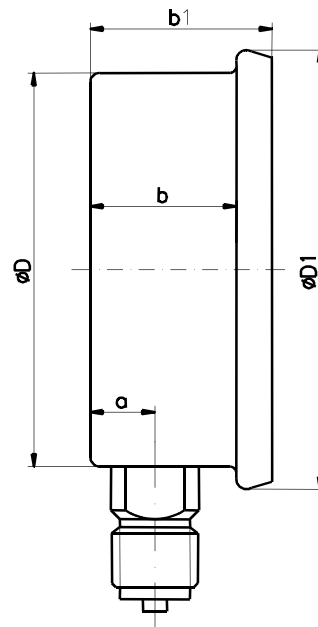
Options

FA - front mounting flange
FB - rear mounting flange
ST - mounting cramp (to a panel)
DI - pin throttle

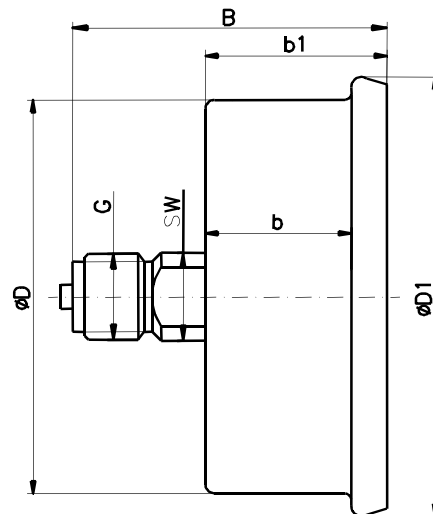
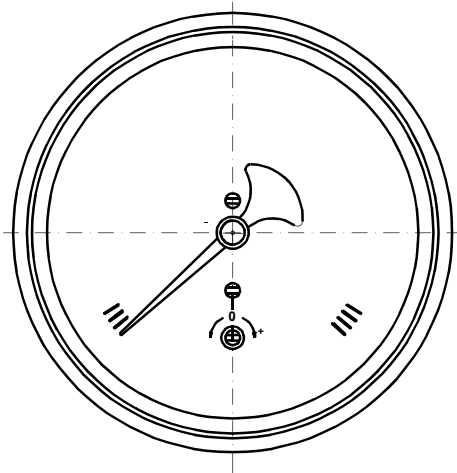
Other mounting threads
Other measuring units



R



AC



ND	Dimensions [mm]										Weight [kg]
	a	b	b1	D	D1	h	B	G		SW	
63	8	24	33	63	70	55	57	M12x1,5	G1/4"	14	0,180
100	13	36	46	100	110	80	72	M20x1,5	G1/2"	22	0,460