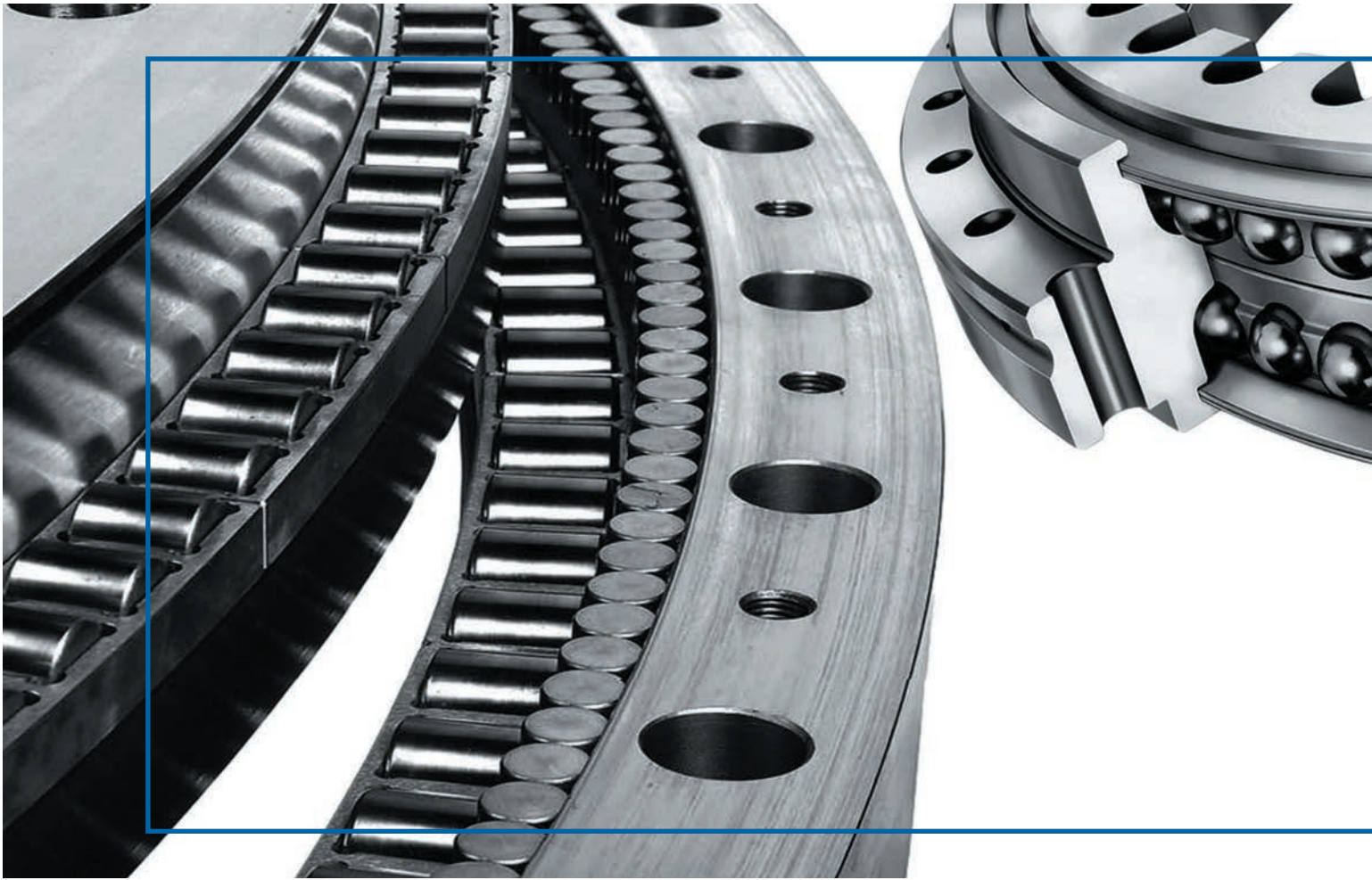


Roller bearings



Kotrljajući ležaji



Stainless Steel

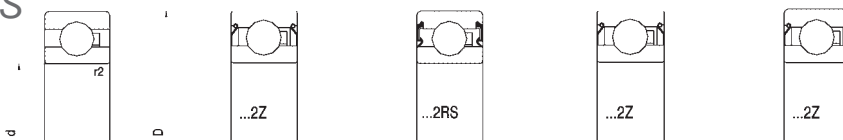
FKL[®]

www.stainlesssteel.com.mk
www.fkl-serbia.com

RADIJALNI JEDNOREDNI KUGLIČNI LEŽAJI

DEEP GROOVE BALL BEARINGS

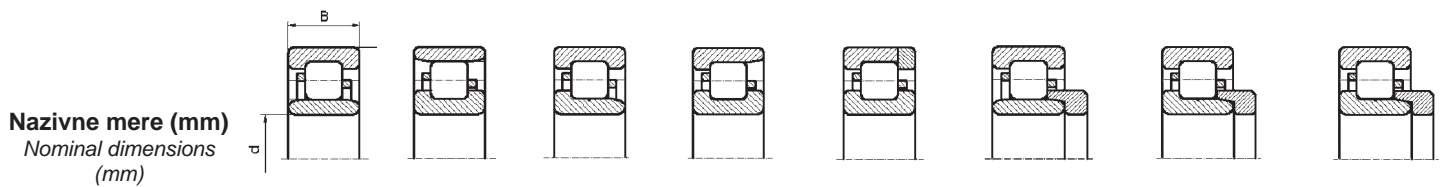
Nazivne mere (mm)
Nominal dimensions (mm)



d	D	B	B					
3	10	4	623	623.2Z				
4	13	5	624	624.2Z				
	16	5	634	634.2Z				
5	16	5	625	625.2Z				
	19	6	635	635.2Z				
6	19	6	626	626.2Z				
7	19	6	607	607.2Z				
	22	7	627	627.2Z	627.2RS			
8	22	7	608	608.2Z	608.2RS			
9	24	7	609	609.2Z	609.2RS			
	26	8	629	629.2Z	629.2RS			
10	26	8	6000	6000.2Z	6000.2RS			
	30	9	6200	6200.2Z	6200.2RS			
	35	11	6300	6300.2Z	6300.2RS			
12	28	8	6001	6001.2Z	6001.2RS			
	32	10	6201	6201.2Z	6201.2RS			
15	35	11	6202	6202.2Z	6202.2RS			
	35	14		62202.2Z	62202.2RS			
	35	13	6202	6302.2Z	6302.2RS			
	35	17		62302.2Z	62302.2RS			
	35	10	6003	6003.2Z	6003.2RS	6003 N		6003 NR
17	40	12	6203	6203.2Z	6203.2RS	6203 N		6203 NR
	40	16		62203.2Z	62203.2RS			
	47	14	6303	6303.2Z	6303.2RS	6303 N		6303 NR
	47	19		62303.2Z	62303.2RS			
20	42	12	6004	6004.2Z	6004.2RS	6004 N		6004 NR
	47	14	6204	6204.2Z	6204.2RS	6204 N		6204 NR
	47	18		62204.2Z	62204.2RS			
	52	15	6304	6304.2Z	6304.2RS	6304 N		6304 NR
	52	21		62304.2Z	62304.2RS			
25	47	12	6005	6005.2Z	6005.2RS	6005 N		6005 NR
	52	15	6205	6205.2Z	6205.2RS	6205 N		6205 NR
	52	18		62205.2Z	62205.2RS			
	62	17	6305	6305.2Z	6305.2RS	6305 N		6305 NR
	62	24		62305.2Z	62305.2RS			
30	55	13	6006	6006.2Z	6006.2RS	6006 N		6006 NR
	62	16	6206	6206.2Z	6206.2RS	6206 N		6206 NR
	62	20		62206.2Z	62206.2RS			
	72	19	6306	6306.2Z	6306.2RS	6306 N		6306 NR
	72	27		62306.2Z	62306.2RS			
35	62	14	6007	6007.2Z	6007.2RS	6007 N		6007 NR
	72	17	6207	6207.2Z	6207.2RS	6207 N		6207 NR
	72	23		62207.2Z	62207.2RS			
	80	21	6307	6307.2Z	6307.2RS	6307 N		6307 NR
	80	31		62307.2Z	62307.2RS			
40	68	15	6008	6008.2Z	6008.2RS	6008 N		6008 NR
	80	18	6208	6208.2Z	6208.2RS	6208 N		6208 NR
	80	23		62208.2Z	62208.2RS			
	90	23	6308	6308.2Z	6308.2RS	6308 N		6308 NR
	90	33		62308.2Z	62308.2RS			
45	75	16	6009	6009.2Z	6009.2RS	6009 N		6009 NR
	85	19	6209	6209.2Z	6209.2RS	6209 N		6209 NR
	85	23		62209.2Z	62209.2RS			
	100	25	6309	6309.2Z	6309.2RS	6309 N		6309 NR
	100	36		62309.2Z	62309.2RS			
50	80	16	6010	6010.2Z	6010.2RS	6010 N		6010 NR
	90	20	6210	6210.2Z	6210.2RS	6210 N		6210 NR
	90	23		62210.2Z	62210.2RS			
	110	27	6310	6310.2Z	6310.2RS	6310 N		6310 NR
	110	40		62310.2Z	62310.2RS			
55	90	18	6011	6011.2Z	6011.2RS	6011 N		6011 NR
	100	21	6211	6211.2Z	6211.2RS	6211 N		6211 NR
	120	29	6311	6311.2Z	6311.2RS	6311 N		6311 NR
60	95	18	6012	6012.2Z	6012.2RS	6012 N		6012 NR
	110	22	6212	6212.2Z	6212.2RS	6212 N		6212 NR
	130	31	6312	6312.2Z	6312.2RS	6312 N		6312 NR
65	100	18	6013	6013.2Z	6013.2RS	6013 N		6013 NR
	120	23	6213	6213.2Z	6213.2RS	6213 N		6213 NR
	140	33	6313	6313.2Z	6313.2RS	6313 N		6313 NR
70	110	20	6014	6014.2Z	6014.2RS	6014 N		6014 NR
	125	24	6214	6214.2Z	6214.2RS	6214 N		6214 NR
	150	35	6314	6314.2Z	6314.2RS	6314 N		6314 NR
75	115	20	6015	6015.2Z	6015.2RS	6015 N		6015 NR
	130	25	6215	6215.2Z	6215.2RS	6215 N		6215 NR
	160	37	6315	6315.2Z	6315.2RS	6315 N		6315 NR
80	125	22	6016	6016.2Z	6016.2RS	6016 N		6016 NR
	140	26	6216	6216.2Z	6216.2RS	6216 N		6216 NR
85	130	22	6017	6017.2Z	6017.2RS	6017 N		6017 NR
	150	28	6217	6217.2Z	6217.2RS	6217 N		6217 NR
90	140	24	6018	6018.2Z	6018.2RS	6018 N		6018 NR
	160	30	6218	6218.2Z	6218.2RS	6218 N		6218 NR
95	145	24	6019					
100	150	24	6020	6020.2Z	6020.2RS	6020 N		6020 NR
	180	34	6220	6220.2Z	6220.2RS	6220 N		6220 NR
105	160	26	6021					
110	170	28	6022					
120	180	28	6024	6024.2Z	6024.2RS	6024 N		6024 NR
	215	40	6224	6224.2Z	6224.2RS			

VALJKASTI LEŽAJI

CYLINDRICAL ROLLER BEARINGS

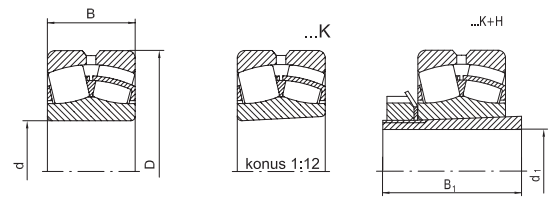


d	D	B	NU	N	NJ	NF	NUP	NP	NU+HJ	NJ+HJ
20	52	15	NU 304		NJ 304		NUP 304		NU+HJ 304	NJ+HJ 304
25	52	15	NU 205	N 205	NJ 205		NUP 205		NU+HJ 205	NJ+HJ 205
	52	18	NU 2205		NJ 2205		NUP 2205		NU+HJ 2205	NJ+HJ 2205
	62	24	NU 2305		NJ 2305		NUP 2305		NU+HJ 2305	NJ+HJ 2305
30	62	16	NU 206	N 206	NJ 206		NUP 206		NU+HJ 206	NJ+HJ 206
35	72	17	NU 207	N 207	NJ 207		NUP 207		NU+HJ 207	NJ+HJ 207
	72	23	NU 2207		NJ 2207		NUP 2207		NU+NJ 2207	NJ+HJ 2207
	80	31	NU 2307		NJ 2307		NUP 2307		NU+HJ 2307	NJ+HJ 2307
	100	25	NU 407		NJ 407		NUP 407		NU+HJ 407	NJ+HJ 407
40	80	18	NU 208	N 208	NJ 208		NUP 208		NU+HJ 208	NJ+HJ 208
	90	33	NU 2308		NJ 2308		NUP 2308		NU+HJ 2308	NJ+HJ 2308
	110	27	NU 408		NJ 408				NU+HJ 408	NJ+HJ 408
45	85	19	NU 209	N 209	NJ 209		NUP 209		NU+HJ 209	NJ+HJ 209
	100	36	NU 2309		NJ 2309		NUP 2309		NU+HJ 2309	NJ+HJ 2309
50	90	20	NU 210	N 210	NJ 210		NUP 210		NU+HJ 210	NJ+HJ 210
	110	27	NU 310	N 310	NJ 310	NF 310	NUP 310	NP 310	NU+HJ 310	NJ+HJ 310
55	100	21	NU 211	N 211	NJ 211		NUP 211		NU+HJ 211	NJ+HJ 211
	100	25	NU 2211		NJ 2211		NUP 2211		NU+HJ 2211	NJ+HJ 2211
70	150	35	NU 314	N 314	NJ 314		NUP 314		NU+HJ 314	NJ+HJ 314
75	115	20	NU 1015				NUP 1015			
80	140	26	NU 216	N 216	NJ 216		NUP 216		NU+HJ 216	NJ+HJ 216
110	200	38	NU 222		NJ 222		NUP 222		NU+HJ 222	NJ+HJ 222
130	230	40	NU 226	N 226	NJ 226		NUP 226		NU+HJ 226	NJ+HJ 226

DVOREDNI BURIČASTI LEŽAJI

DOUBLE ROW SPHERICAL ROLLER BEARINGS

Nazivne mere (mm)
Nominal dimensions (mm)



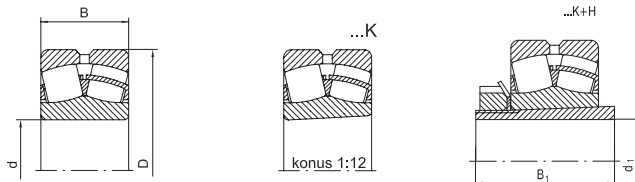
d	d ₁	D	B	B ₁			
25	20	52	18	29	22205	22205 K	22205 K+H
30	25	62	20	31	22206	22206 K	22206 K+H
35	30	72	23	35	22207	22207 K	22207 K+H
40	35	80	23	36	22208	22208 K	22208 K+H
		90	33	46	22308	22308 K	22308 K+H
45	40	85	23	39	22209	22209 K	22209 K+H
		90	23	42	22210	22210 K	22210 K+H
50	45	110	40	55	22310	22310 K	22310 K+H
		100	25	45	22211	22211 K	22211 K+H
55	50	120	43	59	22311	22311 K	22311 K+H
		110	28	47	22212	22212 K	22212 K+H
60	55	130	46	62	22312	22312 K	22312 K+H
		120	31	50	22213	22213 K	22213 K+H
65	60	140	48	65	22313	22313 K	22313 K+H
		125	31	52	22214	22214 K	22214 K+H
70	60	160	51	68	22314	22314 K	22314 K+H
		130	31	55	22215	22215 K	22215 K+H
75	65	160	55	73	22315	22315 K	22315 K+H
		140	33	59	22216	22216 K	22216 K+H
80	70	170	58	78	22316	22316 K	22316 K+H
		150	36	63	22217	22217 K	22217 K+H
85	75	180	60	82	22317	22317 K	22317 K+H
		160	40	65	22218	22218 K	22218 K+H
90	80	160	52	86	23218	23218 K	23218 K+H
		190	64	86	22318	22318 K	22318 K+H
95	85	170	43	68	22219	22219 K	22219 K+H
		200	67	90	22319	22319 K	22319 K+H
95	85	170	43	68	22219	22219 K	22219 K+H
		200	67	90	22319	22319 K	22319 K+H
100	90	180	46	71	22220	22220 K	22220 K+H
		215	73	97	23220	23220 K	23220 K+H
110	100	180	56	81	23122	23122 K	23122 K+H
		200	53	77	22222	22222 K	22222 K+H
120	110	200	70	105	23222	23222 K	23222 K+H
		240	80	105	22322	22322 K	22322 K+H
130	115	180	46	72	23024	23024 K	23024 K+H
		200	62	88	23124	23124 K	23124 K+H
140	125	215	58	88	22224	22224 K	22224 K+H
		215	76	112	23224	23224 K	23224 K+H
150	135	260	86	122	22324	22324 K	22324 K+H
		200	52	80	23026	23026 K	23026 K+H
160	140	210	64	92	23126	23126 K	23126 K+H
		230	64	92	22226	22226 K	22226 K+H
170	150	230	80	121	23226	23226 K	23226 K+H
		280	93	121	22326	22326 K	22326 K+H
180	160	210	53	82	23028	23028 K	23028 K+H
		225	68	97	23128	23128 K	23128 K+H
190	170	250	68	97	22228	22228 K	22228 K+H
		250	88	131	23228	23228 K	23228 K+H
200	180	300	102	131	22328	22328 K	22328 K+H
		225	56	87	23030	23030 K	23030 K+H
210	190	250	80	111	23130	23130 K	23130 K+H
		270	73	111	22230	22230 K	22230 K+H
220	200	270	93	139	23230	23230 K	23230 K+H
		320	108	139	22330	22330 K	22330 K+H
230	210	240	60	93	23032	23032 K	23032 K+H
		270	86	119	23132	23132 K	23132 K+H
240	220	290	80	119	22232	22232 K	22232 K+H
		290	104	147	23232	23232 K	23232 K+H
250	230	340	114	147	22332	22332 K	22332 K+H
		260	67	101	23034	23034 K	23034 K+H
260	240	280	88	122	23134	23134 K	23134 K+H
		310	86	122	22234	22234 K	22234 K+H
270	250	310	110	154	23234	23234 K	23234 K+H
		360	120	154	22334	22334 K	22334 K+H
280	260	280	74	109	23036	23036 K	23036 K+H
		300	96	131	23136	23136 K	23136 K+H
290	270	300	118	161	24136	24136 K	24136 K+H
		320	86	131	22236	22236 K	22236 K+H
300	280	320	112	161	23236	23236 K	23236 K+H
		380	126	161	22336	22336 K	22336 K+H

FKL proizvodi dvoredne buričaste ležaje, osim u klasičnoj izvedbi, i u izvedbama S i E koje se odlikuju većim brojem dimenzija simetričnih buriča i unutrašnjim prstenom bez ramena, za razliku od klasičnih izvedbi. Na raspolaganju su varijante sa i bez otvora za podmazivanje na spoljnjem prstenu te izvedba sa konusnim otvorom bez ili sa sedlom za pritezanje. Kavezi su od presovanog čeličnog lima ili masivni kavezi od mesinga (dodatna oznaka M).

FKL produces double row spherical roller bearings, except in standard execution and executions C and E, which are characterized with a larger number and dimensions of symmetrical spherical rollers and inner ring without shoulder. We offer types with and without grease groove on outer ring, construction types with tapered bore, with or without adapter sleeve. Cages are from pressed steel metal or massive brass cages (additional mark M).

Nazivne mere (mm)
Nominal dimensions (mm)

d	d ₁	D	B	B ₁			
190	170	290	75	112	23038	23038 K	23038 K+H
		320	104	141	23138	23138 K	23138 K+H
		340	92	141	22238	22238 K	22238 K+H
		340	120	169	23238	23238 K	23238 K+H
200	180	400	132	169	22338	22338 K	22338 K+H
		310	82	120	23040	23040 K	23040 K+H
		340	112	150	23140	23140 K	23140 K+H
		360	98	150	22240	22240 K	22240 K+H
220	200	360	128	176	23240	23240 K	23240 K+H
		420	138	176	22340	22340 K	22340 K+H
		340	90	126	23044	23044 K	23044 K+OH
		370	120	161	23144	23144 K	23144 K+OH
240	220	400	108	161	22244	22244 K	22244 K+OH
		400	144	186	23244	23244 K	23244 K+OH
		460	145	186	22344	22344 K	22344 K+OH
		360	92	133	23048	23048 K	23048 K+OH
260	240	400	128	172	23148	23148 K	23148 K+OH
		440	120	172	22248	22248 K	22248 K+OH
		440	160	199	23248	23248 K	23248 K+OH
		500	155	199	22348	22348 K	22348 K+OH
280	260	400	104	145	23052	23052 K	23052 K+OH
		440	144	190	23152	23152 K	23152 K+OH
		480	130	190	22252	22252 K	22252 K+OH
		480	174	211	23252	23252 K	23252 K+OH
300	280	540	165	211	22352	22352 K	22352 K+OH
		420	106	152	23056	23056 K	23056 K+OH
		460	146	195	23156	23156 K	23156 K+OH
		500	130	195	22256	22256 K	22256 K+OH
320	300	500	176	224	23256	23256 K	23256 K+OH
		580	175	224	22356	22356 K	22356 K+OH
		460	118	168	23060	23060 K	23060 K+OH
		500	160	208	23160	23160 K	23160 K+OH
340	320	540	140	208	22260	22260 K	22260 K+OH
		540	192	240	23260	23260 K	23260 K+OH
		480	121	171	23064	23064 K	23064 K+OH
		540	176	226	23164	23164 K	23164 K+OH
360	340	580	150	226	22264	22264 K	22264 K+OH
		580	208	258	23264	23264 K	23264 K+OH
		520	133	187	23068	23068 K	23068 K+OH
		580	190	254	23168	23168 K	23168 K+OH
380	360	620	224	288	23268	23268 K	23268 K+OH
		540	134	188	23072	23072 K	23072 K+OH
		600	192	259	23172	23172 K	23172 K+OH
		560	135	193	23076	23076 K	23076 K+OH
400	380	620	194	264	23176	23176 K	23176 K+OH
		600	148	210	23080	23080 K	23080 K+OH
		650	200	272	23180	23180 K	23180 K+OH
		720	256	-	23280	23280 K	
420	400	820	243	-	22380	22380 K	
		620	150	212	23084	23084 K	23084 K+OH
		700	224	304	23184	23184 K	23184 K+OH
		650	157	228	23088	23088 K	23088 K+OH
440	410	720	226	307	23188	23188 K	23188 K+OH
		790	280	-	23288	23288 K	
		680	163	234	23092	23092 K	23092 K+OH
		760	240	326	23192	23192 K	23192 K+OH
460	430	700	165	237	23096	23096 K	23096 K+OH
		790	248	335	23196	23196 K	23196 K+OH
		720	167	247	230/500	230/500 K	230/500 K+OH
		830	264	356	231/500	231/500 K	231/500 K+OH
530	500	710	136	-	239/530	239/530 K	
		780	185	265	230/530	230/530 K	230/530 K+OH
560	530	820	195	-	230/560	230/560 K	
		920	212	-	230/630	230/630 K	
630	600	1030	315	-	231/630	231/630 K	
		980	230	-	230/670	230/670 K	
750	710	1000	185	-	239/750	239/750 K	
		1150	258	-	230/800	230/800 K	
800	750	1280	375	-	231/800	231/800 K	
		1200	272	-	230/850	230/850 K	

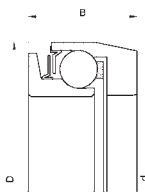


SPECIJALNI PROGRAM LEŽAJA FKL-a

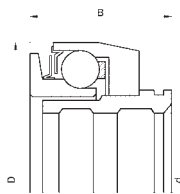
SPECIAL FKL PROGRAMME

Ležaji kvačila (potisni ležaji)

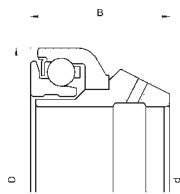
Clutch bearings



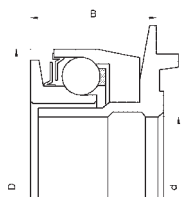
(1)



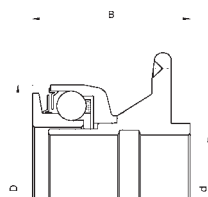
(2)



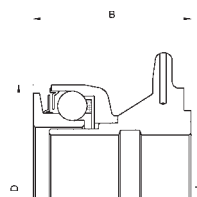
(3)



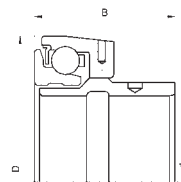
(4)



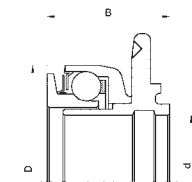
(5)



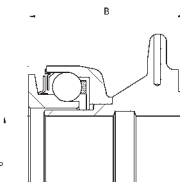
(6)



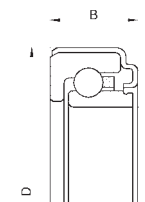
(7)



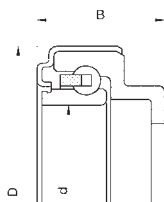
(8)



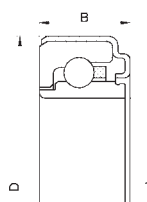
(9)



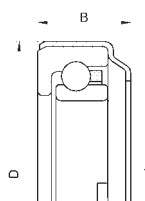
(10)



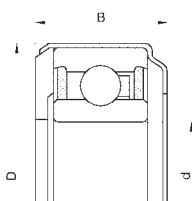
(11)



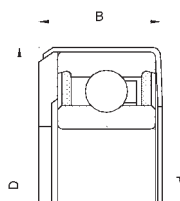
(12)



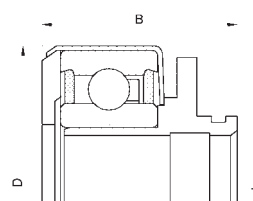
(13)



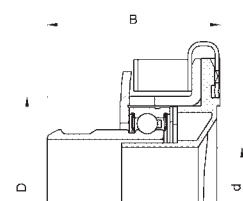
(14)



(15)



(16)

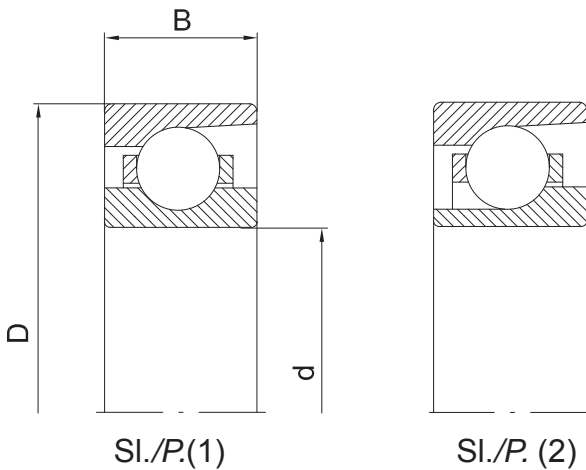


(17)

d (mm)	D (mm)	B (mm)	OZNAKA	MARK	SI. P.
46	68,2	30,55	KZI-1		1
58	92	31	KZI-3		1
71	100	37	KZI-4		1
71	110	40	KZI-4,5		1
71	110	37	KZI-4,5-37 X1		1
80	115	39	KZI-5		1
87,5	132	36	KZI-6		1
35,7	68,2	40,55	KZI-1+NL35,7		2
54	110	59	KZI-4,5+NL54T1		2
57	110	59	KZI-4,5+NL57T1		2
57	110	56	KZI-4,5-37 X1+NL57T1		2
61	110	59	KZI-4,5+NL61T1		2
68	115	58	KZI-5+NL68T3		2
60	110	75	KZI-4,5+NL60T1		3
54	110	59	KZI-4,5+NL54T5		3
54	110	71	KZI-4,5+NL54T2		4
78	132	46	KZI-6+NL78T2		4
42	92	56	KZI-3+NL42T4		5
42	92	66	KZI-3+NL42T3		6
42	92	46,5	KZI-3+NL42T2		7
54	100	69	KZI-4+NL54T4		8
48	100	68	KZI-4+NL48T1		9
63,5	103,4	22,1	555.24.010		10
68	103,4	22	560.04.010		10
55	90,5	25	306.775 B		10
75	118	34	214.03.02		10
63,5	103,4	38,86	532.04.010		11
69,85	103,4	20,6	W 2.3/4		12
69,85	116	28	B 201		13
55	91,9	25	B 204		14
65	101,6	28	PL65-102-28		14
63,5	101,6	23	B 202		15
65	101,6	24,7	PL65-102-25		15
57	102	59,5	PL65-102-25+NL57T1		16
57	102	65	PL65-102-28+NL57T2		16
35,8	68	55	DM 70 TCD		17

JEDNOREDNI KUGLIČNI LEŽAJI SA KOSIM DODIROM

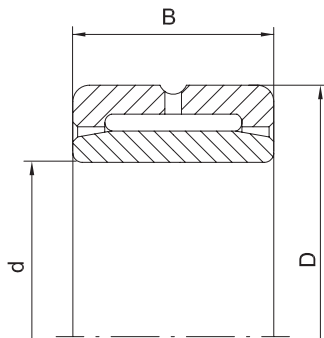
SINGULAR ROW ANGULAR CONTACT BALL BEARINGS



d (mm)	D (mm)	B (mm)	OZNAKA MARK	SI. P.
20	47	14	7204 BEP	2
	52	15	7304 BEP	2
60	150	35	7412 BM	1
80	200	48	7416 AM	1
110	170	28	7022 CM	1
	240	50	7322 BM	1
120	180	28	7024 CM	1
130	200	30	7026 CM	1

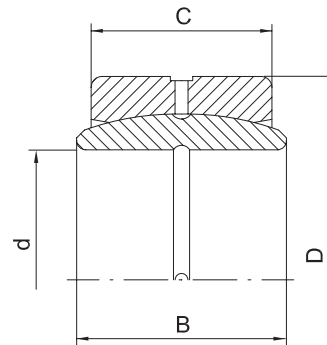
IGLIČASTI LEŽAJI

NEEDLE ROLLER BEARINGS



ZGLOBNI LEŽAJI

RADIAL BALL AND SOCKET JOINTS



d (mm)	B (mm)	D (mm)	OZNAKA MARK
12	15	28	Na 12 V
15	22	35	Na 15 V
17	20	37	Na 17 V
20	20	42	Na 20 V
25	22	47	Na 25 V
30	22	52	Na 30 V
35	22	58	Na 35 V
40	22	65	Na 40 V
45	22	72	Na 45 V
50	28	80	Na 50 V
55	28	85	Na 55 V
60	28	90	Na 60 V
65	28	95	Na 65 V
70	28	100	Na 70 V
75	32	110	Na 75 V
80	32	115	Na 80 V
85	32	120	Na 85 V
90	32	125	Na 90 V
95	32	130	Na 95 V
100	32	135	Na 100 V

d (mm)	D (mm)	B (mm)	C (mm)	OZNAKA MARK
12	22	10	7	GE 12
15	26	12	9	GE 15
17	30	14	10	GE 17
20	35	16	12	GE 20
25	42	20	16	GE 25
30	47	22	18	GE 30
35	55	25	20	GE 35
40	62	28	22	GE 40
45	68	32	25	GE 45
50	75	35	28	GE 50
60	90	44	36	GE 60
70	105	49	40	GE 70
80	120	55	45	GE 80
90	130	60	50	GE 90
100	150	70	55	GE 100
110	160	70	55	GE 110
120	180	85	70	GE 120
140	210	90	70	GE 140
160	230	105	80	GE 160
180	260	105	80	GE 180
200	290	130	100	GE 200



Stainless Steel



CILINDRIČNO VALJKASTI LEŽAJI

CILYNDRICAL ROLLER BEARINGS



RADIJALNI KUGLIČNI LEŽAJI

DEEP GROVE BALL BEARINGS



PODESIVI LEŽAJI I LEŽAJNE JEDINICE (Y PROGRAM)

Y INSERT BEARINGS AND BEARINGS UNITS



DVOREDNI BURIČASTI LEŽAJI

DOUBLE ROW SPHERICAL ROLLER BEARINGS



KARDANSKA VRATILA ZA MOTORNA VOZILA

CARDAN SHAFTS FOR MOTORS VEHICLES



KARDANSKA VRATILA ZA POLJOPRIVREDU

CARDAN SHAFT FOR AGRICULTURE



SPOJNICE ZA KARDANSKA VRATILA

OVERLOAD AND OVERRUNNING CLUTCHES



KARDANSKA VRATILA ZA INDUSTRIJU

CARDAN SHAFTS FOR INDUSTRY



IGLIČASTI LEŽAJI I LEŽAJI ZA POLJOPRIVREDNU MEHANIZACIJU

NEEDLE ROLLER BEARINGS AND BALL BEARINGS FOR AGRICULTURAL MACHINES



ZGLOBNI LEŽAJI

PLAIN BEARINGS



LEŽAJI ZA AUTO INDUSTRIJU

BALL BEARINGS FOR AUTOMOTIVE INDUSTRY