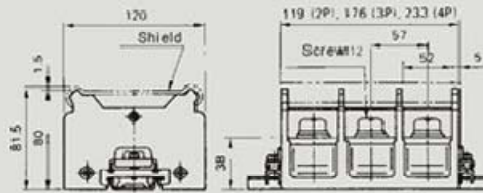


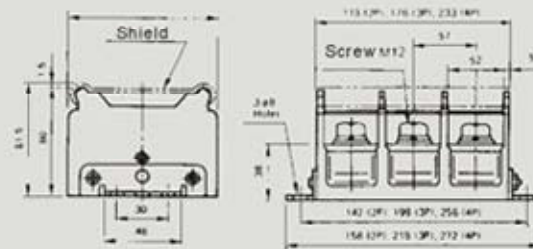
UN Series high current connection terminal

UN400BW

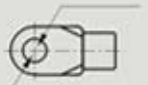


Pole	2P, 3P, 4P
Rated applicable wire	250m ²
Maximal current	430A
Terminal screw	M16
Applicable wrench	Hexagonal 24mm
Size of applicable wire eye	

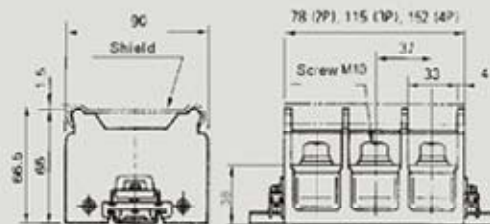
UN400BK



Pole	2P, 3P, 4P
Rated applicable wire	325m ²
Maximal current	520A
Terminal screw	M16
Applicable wrench	Hexagonal 24mm

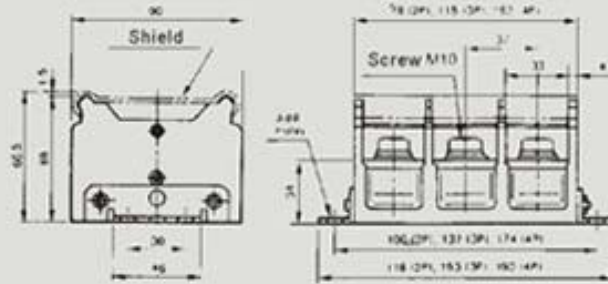


UN200BW



Weight	2P, 3P, 4P
Rated applicable wire	100m ²
Maximal current	.
Terminal screw	M10
Applicable wrench	Hexagonal 17mm
Size of applicable wire eye	

UN200BK

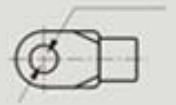


2P, 3P, 4P

100m²

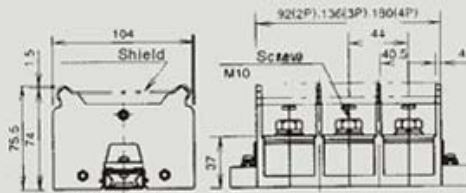
M10

Hexagonal 17mm



Type

UN300BW



Pole

2P, 3P, 4P

Rated applicable wire

150m²

Maximal current

310A

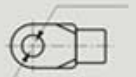
Terminal screw

M10

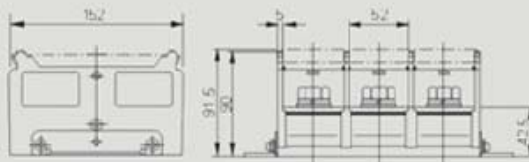
Applicable wrench

Hexagonal 17mm

Size of applicable wire eye



UN500BK



Pole

2P, 3P, 4P

Rated applicable wire

250m²

Maximal current

430A

Terminal screw

M16

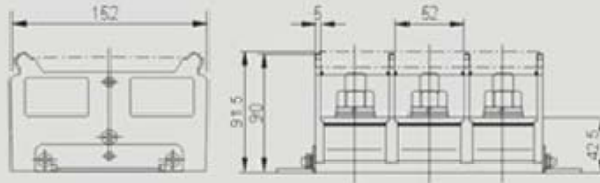
Applicable wrench

Hexagonal 24mm

Size of applicable wire eye



UN600BK



2P, 3P, 4P

325m²

520A

M16

Hexagonal 24mm

