



Fuel Oil & Gasoline, Solenoid Valves

T-Y Solenoid Valves Series are used, Burner, Gasoline, Fuel Oil, and as Following.

TORK T-Y 400 Series Light Oil
Solenoid Valve application on burners

T-Y400 Serie, Sizes 1/8"...up to 2" .Normally closed light oil solenoid valves are direct acting and pilot operated valves, seal is Ruby, teflon+viton diaphragm. Coil voltage; 220V , 110V, 24V, 12V AC, DC.

T-YN Serisi 1/8" and 1/4" , 2/2 way normally open solenoid valves. Seal is Ruby

T-YNA Serisi Normally open valves and, 3/8"...up to 2" . Pilot operated valves

T-YL Serisi Full orifice and normally closed type fuel oil solenoid valves. Size:3/8"...2"

T-YLN Serisi Full orifice fuel oil valves and normally open series fuel oil solenoid valves. Size:3/8"...2"

T-YH Serisi, T-YHA Serisi, High pressure fuel oil solenoid valves. 40 Bar .T-YH Serie is normally closed, T-YHA serie is normally open position.

T-YP Serisi , T-YP.3W Plate mounting, 2/2 and,3/2 way fuel oil solenoid valves**T-Y.3W Serie**, 3/2 way , size: 1/8" and 1/4"



T-YN Series Fuel Oil, Burner Solenoid Valve, N.O (1/8", 1/4")

T-YN Series Fuel Oil, Burner Solenoid Valve, N.O (1/8", 1/4")



Product code : T-YN400,.....T-YN401

Brand : TORK

T-YN Series Fuel Oil, Burner Solenoid Valve, N.O (1/8", 1/4")

[TORK Direct Acting Fuel Oil, Light Oil Solenoid Valves](#)

T-YN Series

normally OPEN position

Application : fuel oil, diesel oil, burner, oil (1/8", 1/4")

Coil Voltage : 230, 220V, 110V, 24V, 12V AC, 24V, 12V DC

(specify coil voltage with order)

Protection Class : IP 65 with plug

Diaphragm : Ruby

Way : 2/2 way

Position : **NORMALLY OPEN**

Tube, Internal Parts : stainless steel

Size	Order Types	Orifice	Kv	Pressure(bar)	Temp. (°C)	Body	Seal	Net Weight
G	T-Y.N Series	(mm)	(lt/min)	Min Max	Min Max	Brass	---	(kg)
1/8"	T-Y.N400	2,5	3,2	0.....30	-10.....160	MS58	RUBY	0,38
1/8"	T-Y.N400.3	3	4,6	0.....22	-10.....160	MS58	RUBY	0,38

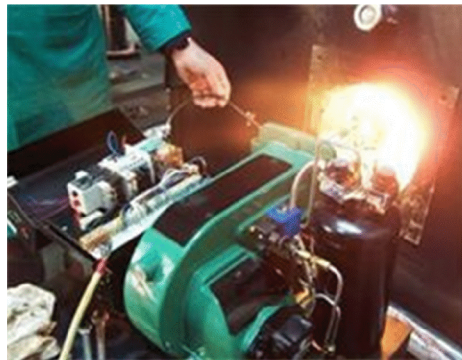
EL

News

Electrolux
Macedonia
Palenzo

1/8"	T-Y.N400.3,2	3,2	5	0.....20	-10.....160	MS58	RUBY	0,38
1/4"	T-Y.N401	2,5	3,2	0.....30	-10.....160	MS58	RUBY	0,37
1/4"	T-Y.N401.3	3	4,6	0.....22	-10.....160	MS58	RUBY	0,37
1/4"	T-Y.N401.3,2	3,2	5	0.....30	-10.....160	MS58	RUBY	0,37

TORK T-Y.N 400 Serie Light Oil
Solenoid Valve Application on Burners





T-Y Series Fuel Oil, Light Oil Solenoid Valves N.C (1/8"..2")

T-Y Series Fuel Oil, Light Oil Solenoid Valves N.C (1/8"..2")



Product code : T-Y400.....T-Y407

Brand : TORC

T-Y Series Fuel Oil, Light Oil Solenoid Valves N.C (1/8"..2")

[TORC Direct Acting and Pilot Operated Fuel Oil, Light Oil Solenoid Valves, for burners](#)

T-Y Series	:	normally closed position
Application	:	fuel oil, gasoline, burners, oil
Coil Voltage	:	230, 220V, 110V, 24V, 12V AC, 24V, 12V DC
specify coil voltage with order		
Protection Class	:	IP 65 with plug
Diaphragm	:	VITON+TEFLON , Ruby, VITON
Way	:	2/2 way
Position	:	normally closed
Tube, Internal Parts	:	stainless steel

T-Y Series TORC Pilot Operated Fuel Oil, Light Oil Solenoid Valves Normally Closed

Size	Order Types	Orifice	Kv	Pressure(bar)	Temp. (°C)	Body	Seal	Net Weight
G	T-Y Series	(mm)	(lt/min)	Min Max	Min Max	Brass	---	(kg)
3/8"	T-Y 402	12,5	48	0,5.....16	-10.....160	MS58	VITON	0,68

EL

News

ΕΛΛΗΝΙΚΗ
Electrolux
 Macedonia
 Palenzo

1/2"	T-Y 403	14,5	70	0,5.....16	-10.....160	MS58	VITON	0,71
3/4"	T-Y 404	17	85	0,5.....16	-10.....160	MS58	VITON	0,80
1"	T-Y 405	17	90	0,5.....16	-10.....160	MS58	VITON	0,97
1 1/4"	T-Y 406	46	390	0,5.....12	-10.....160	MS58	VITON	2,65
1 1/2"	T-Y 407	46	460	0,5.....12	-10.....160	MS58	VITON	2,55
2"	T-Y 408	46	580	0,5.....12	-10.....160	MS58	VITON	2,98

T-Y Series TORK Direct Acting Fuel Oil, Light Oil Solenoid Valves N.C

Size	Order Types	Orifice	Kv	Pressure(bar)		Temp. (°C)		Body	Seal	Net Weight
G	T-Y Series	(mm)	(lt/min)	Min	Max	Min	Max	Brass	---	(kg)
1/8"	T-Y 400	2,5	3,2	0.....30		-10.....160		MS58	RUBY	0,37
1/8"	T-Y 400.3,2	3,2	5	0.....20		-10.....160		MS58	RUBY	0,37
1/4"	T-Y 401	2,5	3,2	0.....30		-10.....160		MS58	RUBY	0,36
1/4"	T-Y 401.3,2	3,2	5	0.....20		-10.....160		MS58	RUBY	0,36



T-YNA Fuel Oil, burner Solenoid Valves, Pilot Operated, N.O (3/8"...2")

T-YNA Fuel Oil, burner Solenoid Valves, Pilot Operated, N.O (3/8"...2")



Product code : T-YNA402...407

Brand : TORC

T-YNA Fuel Oil, burner Solenoid Valves, Pilot Operated, N.O (3/8"...2")

[TORC, Pilot Operated Solenoid Valves; for Fuel Oil, Burner, Diesel Oil, Gasoline](#)

T-YNA Serisi

Normally Open position

Application : fuel oil, diesel oil, borner, oil

Coil Voltage : 230, 220V, 110V, 24V, 12V AC, 24V, 12V DC
specify coil voltage with order

Protection Class : IP 65 with plug

Diaphragm : VITON+TEFLON , Ruby, VITON

Way : 2/2 way

Position : **NORMALLY OPEN**

Tube, Internal Parts : stainless steel

Size	Order Types	Orifice	Kv	Pressure(bar)	Temp. (°C)	Body	Seal	Net Weight
G(BSP)	T-YNA Series	(mm)	(lt/min)	Min Max	Min Max	Brass	---	(kg)
3/8"	T-YNA.402	12,5	48	0,5.....12	-10.....160	MS58	VITON	0,69
1/2"	T-YNA.403	14,5	70	0,5.....12	-10.....160	MS58	VITON	0,72

EL

News

Electrolux
Macedonia
Palenzo

3/4"	T-YNA.404	17	85	0,5.....12	-10.....160	MS58	VITON	0,81
1"	T-YNA.405	17	90	0,5.....12	-10.....160	MS58	VITON	0,98
1 1/4"	T-YNA.406	46	390	0,5.....10	-10.....160	MS58	VITON	2,66
1 1/2"	T-YNA.407	46	460	0,5.....10	-10.....160	MS58	VITON	2,56
2"	T-YNA.408	46	580	0,5.....10	-10.....160	MS58	VITON	2,99



T-YP Series Plate Mounting Type Fuel Solenoid Valves, N.C , (1/4")

T-YP Series Plate Mounting Type Fuel Solenoid Valves, N.C , (1/4")



Product code : T-YP401 2/2yollu.3/2 yollu

Brand : TORK

T-YP Series Plate Mounting Type Fuel Solenoid Valves, N.C , (1/4")

[TORK, Plate Mounting Type, Fuel Oil-Light Oil Solenoid Valves, Direct Acting, 2/2 and 3/2 way](#)

T-YP Series normally closed position.

Application : fuel oil, diesel oil, burner, oil

Coil Voltage : 230, 220V, 110V, 24V, 12V AC, 24V, 12V DC
specify coil voltage with order

Protection Class : IP 65 with plug

Diaphragm : Ruby

Way : 2/2 way, 3/2 way

Position : **NORMALLY closed**

Tube, Internal Parts : stainless steel

Size	Order Types	Orifice	Kv	Pressure(bar)	Temp.(°C)	Body	Seal	Net Weight
G(BSP)	T-YP Series	(mm)	(lt/min)	Min Max	Min Max	Brass	---	(kg)
1/4" Pleyt	T-YP.400	3,2	5	0.....30	-10....160	MS58	RUBY	0,50
1/4" Pleyt	T-YP.3W400	1,8	1-2=1,35 , 2-3=1,35	0.....12	-10....160	MS58	RUBY	0,50



T-YH High Pressure Fuel Oil Solenoid Valves, N.C

T-YH High Pressure Fuel Oil Solenoid Valves, N.C



Product code : T-YH402.....405

Brand : TORK

T-YH High Pressure Fuel Oil Solenoid Valves, N.C

[TORK, T-YH High Pressure, Pilot Operated, Solenoid Valves; For Fuel Oil, Light Oil](#)

T-YH Series	:	normally closed position.
Application	:	fuel oil, burner, oil
Coil Voltage	:	230, 220V, 110V, 24V, 12V AC, 24V, 12V DC
specify coil voltage with order		
Protection Class	:	IP 65 with plug
Diaphragm	:	VITON+TEFLON , Ruby, VITON
Way	:	2/2 way
Position	:	normally closed
Tube, Internal Parts	:	stainless steel

Size	Order Types	Orifice (mm)	Kv (lt/min)	Pressure(bar) Min	Pressure(bar) Max	Temp. (°C) Min	Temp. (°C) Max	Body	Seal	Net Weight (kg)
1/8"	T-YH.400.1	1	0,6	0.....100		-10.....160		MS58	VITON	0,36
1/8"	T-YH.400.1,8	1,8	1,6	0.....50		-10.....160		MS58	VITON	0,36
1/8"	T-YH.400.2,5	2,5	3,2	0.....20		-10.....160		MS58	VITON	0,36



1/4"	T-YH.401.1	1	0,6	0.....100	-10.....160	MS58	VITON	0,35
1/4"	T-YH.401.1.1,8	1,8	1,6	0.....50	-10.....160	MS58	VITON	0,35
1/4"	T-YH.401.2,5	2,5	3,2	0.....20	-10.....160	MS58	VITON	0,35



T-YHA High Pressure Fuel Oil Solenoid Valves, N.O, (3/8"..1")

T-YHA High Pressure Fuel Oil Solenoid Valves, N.O, (3/8"..1")



Product code : T-YHA402.....405

Brand : TORK

T-YHA High Pressure Fuel Oil Solenoid Valves, N.O, (3/8"..1")

[TORK High Pressure Pilot Operated Solenoid Valves for Fuel Oil, Light Oil](#)

T-YHA Series

normally OPEN position

Application : fuel oil, burner, oil

Coil Voltage : 230, 220V, 110V, 24V, 12V AC, 24V, 12V DC
specify coil voltage with order

Protection Class : IP 65 with plug

Diaphragm : VITON+TEFLON , Ruby, VITON

Way : 2/2 way,

Position : [normally open](#)

Tube, Internal Parts : stainless steel

Size	Order Types	Orifice	Kv	Pressure(bar)	Temp. (°C)	Body	Seal	Net Weight
G(BSP)	T-YHA Series	(mm)	(lt/min)	Min Max	Min Max	Brass	---	(kg)
3/8"	T-YHA.402	12,5	48	0,5.....40	-10.....160	MS58	PTFE+VITON	0,71
1/2"	T-YHA.403	14,5	70	0,5.....40	-10.....160	MS58	PTFE+VITON	0,74

EL

News

Електролюкс
Electrolux
Macedonia
Palenzo

3/4"	T-YHA.404	17	85	0,5.....40	-10.....160	MS58	PTFE+VITON	0,82
1"	T-YHA.405	17	90	0,5.....40	-10.....160	MS58	PTFE+VITON	0,99



T-YP.3W Fuel Oil & Burner, Solenoid Valves; Plate Mounting N.C.1/8"

T-YP.3W Fuel Oil & Burner, Solenoid Valves; Plate Mounting N.C.1/8"



Product code : T-YP.3W401 3 /2yollu

Brand : TORK

T-YP.3W Fuel Oil & Burner, Solenoid Valves; Plate Mounting N.C.1/8"

TORK, Plate Mounting , Direct Acting Fuel Oil, Light Oil Solenoid Valves, 2/2 and 3/2 way

T-YP.3W Series

normally closed position.

Application : fuel oil, diesel oil, borner, oil

Coil Voltage : 230, 220V, 110V, 24V, 12V AC, 24V, 12V DC
specify coil voltage with order

Protection Class : IP 65 with plug

Diaphragm : VITON+TEFLON , Ruby, VITON

Way : 2/2 way, 3/2 way

Position : **NORMALLY closed**

Tube, Internal Parts : stainless steel

Size	Order Types	Orifice	Kv	Pressure(bar)	Temp. (°C)	Body	Seal	Net Weight
G(BSP)	T-YP.3W Series	(mm)	(lt/min)	Min Max	Min Max	Brass	---	(kg)
---	T-YP.3W 400	1,8	1-2=1,35 , 2-3=1,35	0.....12	-10.....160	MS58	RUBY	0,50



T-Y.3W fuel oil solenoid valve, 3/2 way, N.C (1/8"..1/4")

T-Y.3W fuel oil solenoid valve, 3/2 way, N.C (1/8"..1/4")



Product code : T-Y.3W serisi 3/2 yollu

Brand : TORK

T-Y.3W fuel oil solenoid valve, 3/2 way, N.C (1/8"..1/4")

[TORK Direct Acting Solenoid Valves, 3/2 Way; for Fuel Oil, Light Oil, Diesel Oil, Burner](#)

T-Y.3W Series	:	normally CLOSED position.
Application	:	fuel oil, diesel oil, burner, oil
Coil Voltage	:	230, 220V, 110V, 24V, 12V AC, 24V, 12V DC
specify coil voltage with order		
Protection Class	:	IP 65 with plug
Diaphragm	:	Ruby, VITON
Way	:	3/2 way
Position	:	NORMALLY CLOSED
Tube, Internal Parts	:	stainless steel

Size	Order Types	Orifice	Kv	Pressure(bar)	Temp. (°C)	Body	Seal	Net Weight
G(BSP)	T-Y.3W Series	(mm)	(lt/min)	Min Max	Min Max	Brass	---	(kg)
1/8"	T-Y.3W 400	1,8	1-2=1,35 , 2-3=2,7	0.....12	-10.....160	MS58	VITON	0,37
1/8"	T-Y.3W 400.2,5	2,5	1-2=2,7 , 2-3=2,7	0.....10	-10.....160	MS58	VITON	0,37
1/4"	T-Y.3W 401	1,8	1-2=1,35 , 2-3=2,7	0.....12	-10.....160	MS58	VITON	0,36
1/4"	T-Y.3W 401.2,5	2,5	1-2=2,7 , 2-3=2,7	0.....10	-10.....160	MS58	VITON	0,36



T-Y.3W fuel oil solenoid valve, 3/2 way, N.C (1/8"..1/4")

T-Y.3W fuel oil solenoid valve, 3/2 way, N.C (1/8"..1/4")



Product code : T-Y.3W serisi 3/2 yollu

Brand : TORK

T-Y.3W fuel oil solenoid valve, 3/2 way, N.C (1/8"..1/4")

[TORK Direct Acting Solenoid Valves, 3/2 Way; for Fuel Oil, Light Oil, Diesel Oil, Burner](#)

T-Y.3W Series	:	normally CLOSED position.
Application	:	fuel oil, diesel oil, burner, oil
Coil Voltage	:	230, 220V, 110V, 24V, 12V AC, 24V, 12V DC
specify coil voltage with order		
Protection Class	:	IP 65 with plug
Diaphragm	:	Ruby, VITON
Way	:	3/2 way
Position	:	NORMALLY CLOSED
Tube, Internal Parts	:	stainless steel

Size	Order Types	Orifice	Kv	Pressure(bar)	Temp. (°C)	Body	Seal	Net Weight
G(BSP)	T-Y.3W Series	(mm)	(lt/min)	Min Max	Min Max	Brass	---	(kg)
1/8"	T-Y.3W 400	1,8	1-2=1,35 , 2-3=2,7	0.....12	-10.....160	MS58	VITON	0,37
1/8"	T-Y.3W 400.2,5	2,5	1-2=2,7 , 2-3=2,7	0.....10	-10.....160	MS58	VITON	0,37
1/4"	T-Y.3W 401	1,8	1-2=1,35 , 2-3=2,7	0.....12	-10.....160	MS58	VITON	0,36
1/4"	T-Y.3W 401.2,5	2,5	1-2=2,7 , 2-3=2,7	0.....10	-10.....160	MS58	VITON	0,36

T-YL Full Orifice, Fuel Oil, Burner Solenoid Valves, Pilot Operated, N.C. (3/8" ...2")

T-YL Full Orifice, Fuel Oil, Burner Solenoid Valves, Pilot Operated, N.C. (3/8" ...2")



Product code : T-YL402...407

Brand : TORK

All photos | **Description**

T-YL Full Orifice, Fuel Oil, Burner Solenoid Valves, Pilot Operated, N.C. (3/8" ...2")

[TORK, Pilot Operated Full Orifice, Solenoid Valves, for Fuel Oil, Light Oil](#)

T-YL Series	:	normally closed position.
Application	:	fuel oil, diesel oil, gasoline, burner
Coil Voltage	:	230, 220V, 110V, 24V, 12V AC, 24V, 1 2V DC
specify coil voltage with order		
Protection Class	:	IP 65 with plug
Diaphragm	:	VITON+TEFLON , Ruby, VITON
Way	:	2/2 way
Position	:	normally closed
Tube, Internal Parts	:	stainless steel

Size	Order Types	Orifice	Kv	Pressure(bar)	Temp. (°C)	Body	Seal	Net Weight
G(BSP)	T-YL Series	(mm)	(lt/min)	Min Max	Min Max	Brass	---	(kg)

EL

News

Electrolux
Macedonia
Palenzo

3/8"	T-YL 402	12,5	45	0,35.....16	-10.....160	MS58	VITON	0,68
1/2"	T-YL 403	12,5	65	0,35.....16	-10.....160	MS58	VITON	0,64
3/4"	T-YL 404	20	120	0,5.....16	-10.....160	MS58	VITON	0,66
1"	T-YL 405	25	170	0,5.....16	-10.....160	MS58	VITON	0,80
1 1/4"	T-YL 406	46	390	0,5.....12	-10.....160	MS58	VITON	2,65
1 1/2"	T-YL 407	46	460	0,5.....12	-10.....160	MS58	VITON	2,55
2"	T-YL 408	46	580	0,5.....12	-10.....160	MS58	VITON	2,98



T-YLN Full Orifice, Fuel Oil, Burner, Pilot Operated Solenoid Valves, N.O (3/8" ...2")

T-YLN Full Orifice, Fuel Oil, Burner, Pilot Operated Solenoid Valves, N.O (3/8"...2")



Product code : T-YLN402.....408

Brand : TORK

T-YLN Full Orifice, Fuel Oil, Burner, Pilot Operated Solenoid Valves, N.O (3/8" ...2")

[TORK, Full Orifice , Pilot Operated Solenoid Valves, for Fuel Oil, Light Oil](#)

T- YLN Series

normally open position

Application : fuel oil, burner, oil

Coil Voltage : 230, 220V, 110V, 24V, 12V AC, 24V, 12V DC
specify coil voltage with order

Protection Class : IP 65 with plug

Diaphragm : VITON+TEFLON , Ruby, VITON

Way : 2/2 way

Position : [normally open](#)

Tube, Internal Parts : stainless steel

Size	Order Types	Orifice	Kv	Pressure(bar)	Temp. (°C)	Body	Seal	Net Weight
G(BSP)	T-YLN Series	(mm)	(lt/min)	Min Max	Min Max	Brass	---	(kg)
3/8"	T-YLN 402	12,5	45	0,35.....12	-10.....160	MS58	VITON	0,69
1/2"	T-YLN 403	12,5	65	0,35.....12	-10.....160	MS58	VITON	0,66

EL

News

Electrolux
Macedonia
Palenzo

3/4"	T-YLN 404	20	120	0,5.....12	-10.....160	MS58	VITON	0,67
1"	T-YLN 405	25	170	0,5.....12	-10.....160	MS58	VITON	0,81
1 1/4"	T-YLN 406	46	390	0,5.....10	-10.....160	MS58	VITON	2,66
1 1/2"	T-YLN 407	46	460	0,5.....10	-10.....160	MS58	VITON	2,56
2"	T-YLN 408	46	580	0,5.....10	-10.....160	MS58	VITON	2,99