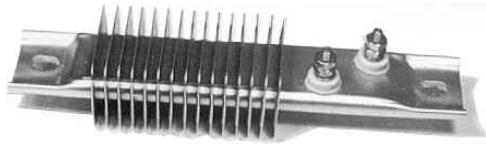


ЕЛЕКТРОЛУКС Electrolux

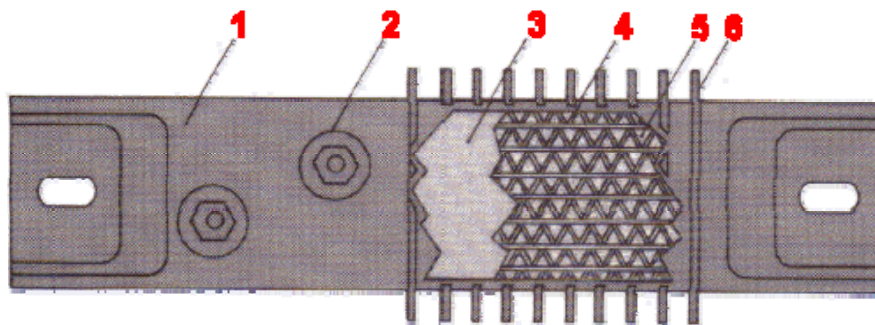
Strip heaters: Ceramic Insulated Finned



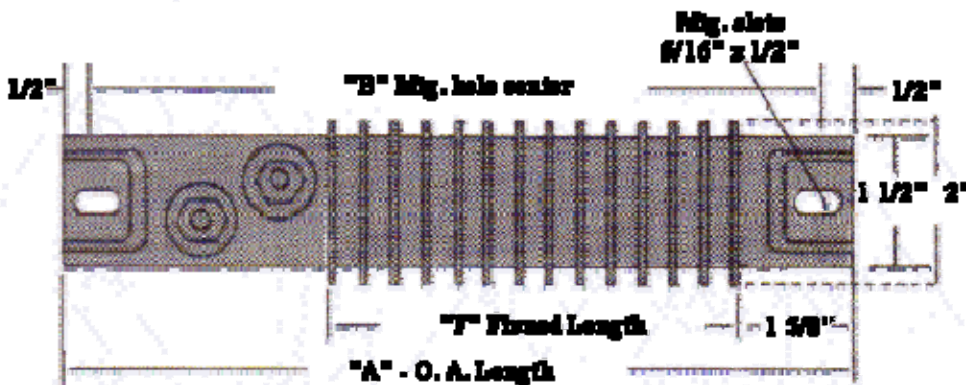
Applications

Air Heating, Air Ovens, Load Banks

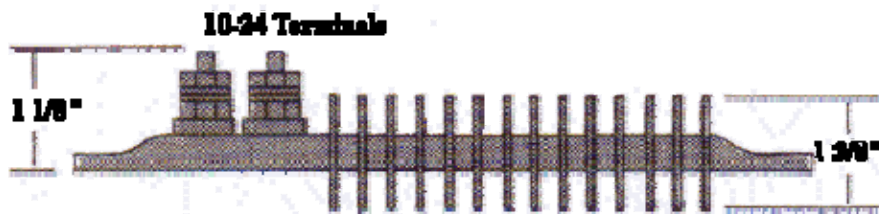
Construction



1. Seamless stainless steel sheath
2. Post terminals
3. Ceramic element support
4. Element wire is situated in close proximity to outside surface for maximum heat transfer and minimum internal temperature while preserving good dielectric qualities.
5. Magnesium oxide packing
6. Aluminum fins offering maximum radiating surface and providing for rapid heat transfer to the surrounding medium. Stainless steel fins are available for corrosive environments. Aluminum fins are standard.



ЕЛЕКТРОЛУКС Electrolux

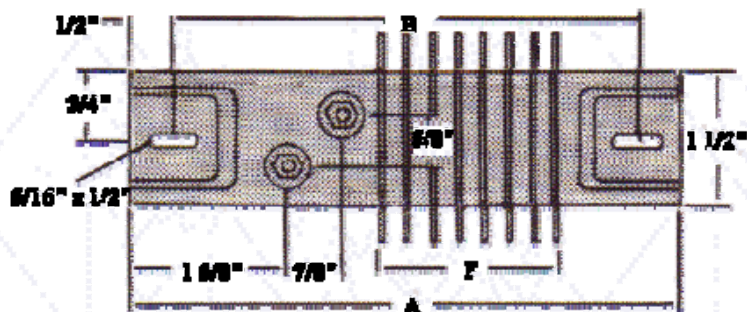


Catalog Number	"A"	"B"	"F"	Min. Watts	Max. Watts
FS-8	8"	7"	3 1/4"	50	475
FS10.5	10 1/2"	9 1/2"	5 3/4"	50	785
FS-12	12"	11"	7 3/4"	50	1000
FS-14	14"	13"	9 3/4"	50	1300
FS-15.2	15 1/4"	14 1/4"	10 1/2"	50	1500
FS-18	18"	17"	13 1/4"	50	1890
FS19.5	19 1/2"	18 1/2"	14 3/4"	50	2135
FS-21	21"	20"	16 1/4"	50	2360
FS-23.7	23 3/4"	22 3/4"	19"	50	2775
FS-25.5	25 1/2"	24 1/2"	20 3/4"	50	3000
FS-26.7	26 3/4"	25 3/4"	22"	50	3225
FS-30.5	30 1/2"	29 1/2"	25 3/4"	75	3780
FS33.5	33 1/2"	32 1/2"	28 3/4"	75	4230
FS-35.7	35 3/4"	34 3/4"	31"	75	4320
FS-38.5	38 1/2"	37 1/2"	33 3/4"	100	4320
FS-42.5	42 1/2"	41 1/2"	37 3/4"	100	4320

- 1 Maximum wattage limited by 18 amp maximum at 240 volts for catalog numbers FS35.7 and longer. Any wattage is available between minimum and maximum without effecting price.
- 1 Lengths between and longer than those listed may be ordered.

Standard Termination

Type OF: Offset at one end.



ЕЛЕКТРОЛУКС Electrolux

Type of Air	Ft./min.	°F	Max.Watts/ Sq.in.
Still		Up to 300°F	20
Still		300°F-600°F	16
Still		600°F-800°F	10
Moving	600	Up to 200°F	40
Moving	600	200°-400°F	30
Moving	600	400°-600°F	20
Moving	1200	Up to 200°F	50
Moving	1200	200°-400°F	35
Moving	1200	400°-600°F	25

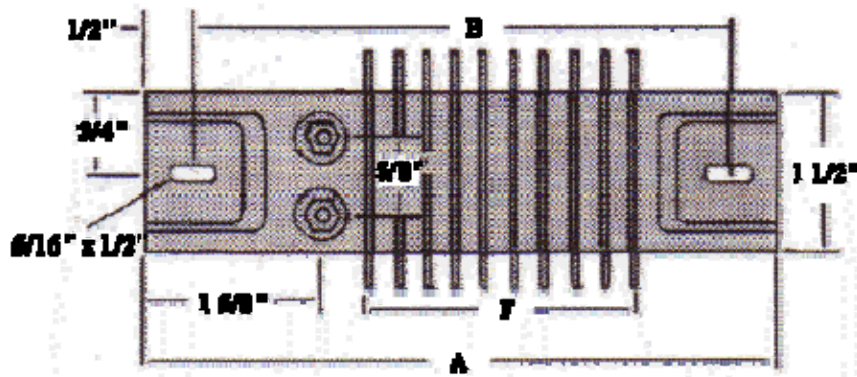
Formula for Determination of Watt Density

Type OF:

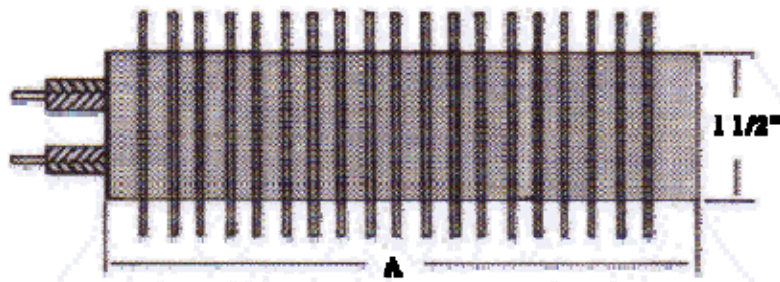
$$\text{Watts/sq.in.} = \frac{\text{Total unit wattage}}{F (\text{finned length}) \times 3}$$

Optional Terminations

Type SSA: Parallel at one end. Finned length ("F") is 3/4" longer.



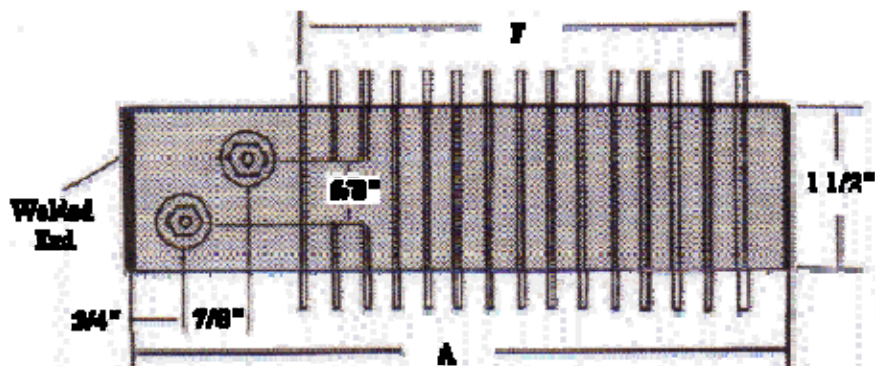
Type SF-1: Flexible high temperature insulated leads. Specify length. Opposite end of unit may be standard closure with mounting hole or any of the optional closures. Suitable for use to 480V.



ЕЛЕКТРОЛУКС Electrolux

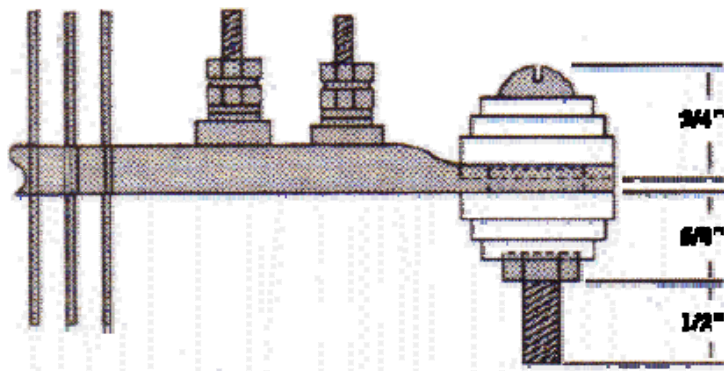
Optional End Closures

XS-54: Blunt end. Welded each end with no mounting holes. May be used with Type OF or SSA terminals. Finned length ("F") is 3" longer.

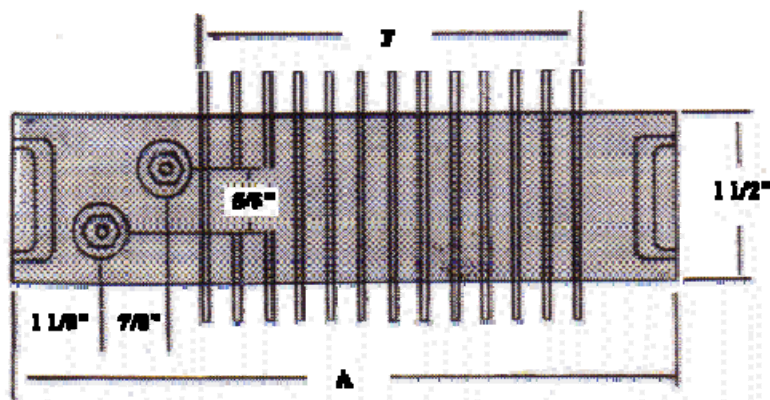


XS-83: Short crimp. At each end with no mounting holes. May be used with Type OF or SSA terminals. Finned length("F") is 1" longer.

XS-84: Secondary insulating bushings. Required when units are connected in series on voltages above 300V. Sheath must be isolated. Requires enlarged (1/2" x 3/4") mounting hole each end. May be used with Type OF or SSA terminals.



XS-85: Stainless steel fins. For use in corrosive environments.



ЕЛЕКТРОЛУКС Electrolux

Tolerances

Length: Up to 24", $\pm 1/16$ "

24" and over, $\pm 1/8$ "

Wattage tolerances are held +5%, -10% at rated voltage.

How To Order

After determining the wattage required and the line voltage available, determine the physical space available for heaters and the number of heaters required.

Review Stock List for [In-Stock](#) Items. Review Special Features.