



Електролуks
Electrolux

Електролуks

Ovaj cfez e sopshvenost na Electrolux-Bitola.Bez negovo pismeno odobruvanje istiot nesmee da se prepisuva , umozuiva niti kopira bez soglasnost od Elektroлуks vo sproitivno se snosat posledici vo smislana clenovite 163 i 164 od kriticniot zakon R.M. (повреда на авторско право)

Electrolux is registered trademark of Електролуks companies in Macedonia and other countries

Ognootporni kabli

Fire resistant cables



Made in Electrolux

Adresa: ul.Braka Mingovi 18, 7000 Bitola; tel: 047/203-330 ,203 900ul.A.Guslarot.1a 02/329 8130 Skopje

www.electrolux.com.mk www.elektroluks.com.mk electrolux@mt.net.mk



JE-H(st)H Bd FE180/E90 fire resistant and halogen free cables according to DIN VDE 0815.



APPLICATIONS	
<p>They are used in indoor fixed installations for telephone connections, extensions, security and fire warning systems, wherever high security specifications are required for the protection of human life in case of fire. The static screen protects the signal from outer electrical interferences. When they are burning the circuit integrity maintains for 90 minutes. They present low smoke and zero halogen emission.</p>	
CABLE STRUCTURE	TECHNICAL DATA
<p>Cores : solid of bare copper, with diameter 0.8mm. Core insulation : of MICA tape and polymer cross-linked compound HI 1 according DIN VDE 0207-23. Colour code : cores are marked with black rings and the units with numbered tape, according to DIN VDE 0815. Cores are twisted in pairs, four pairs twisted in a quad and quads are stranded to units. Units are stranded together. Wrapping : 1° wrapping : of plastic tape. 2° wrapping : of fibre-glass tape. Drain wire : of tinned copper. Screen : of aluminum tape. Outer sheath : of polyolefin compound HM2 according DIN VDE 0207-24, in orange colour.</p>	<p>Specifications : DIN VDE 0815. Temperature range : -5°C to +70°C. Nominal voltage : (maximum) 225 V. Halogen free : DIN VDE 0482-267, EN 50267 and IEC 60754-2. Flame retardant : DIN VDE 0482-265, EN 50265 and IEC 60332-1. Reduced flame propagation : DIN VDE 0472-804/C, CENELEC HD 405.3 and IEC 60332-3 cat C and cat A. Low smoke emission : DIN VDE 0482-268, EN 50268 and IEC 61034-1. Insulation integrity FE180 : DIN VDE 0472-814, IEC 60331, EN 50200, NBN C30-004 cat F3 Functionality E90 : DIN 41012-12</p>

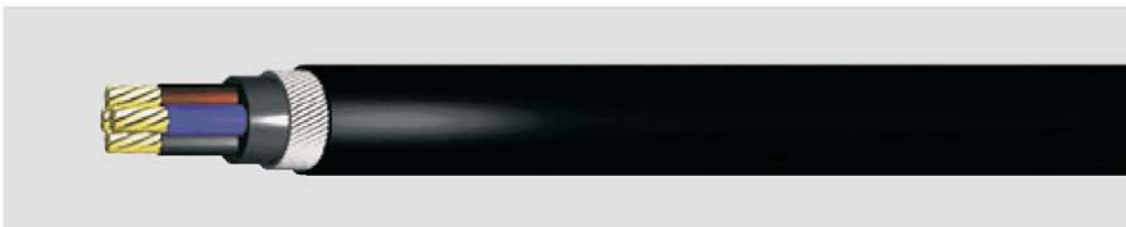
CE= The above mentioned cable are conformed with the Low Voltage Directive 73/23 EEC, 93/68 EEC.

CORES x CROSS-SEC. IN mm	APPROXIMATELY		
	OUTER DIAMETER Ø mm	COPPER WEIGHT Kg/Km	CABLE WEIGHT Kg/Km
2x2x0.8	8.0	25.0	73
4x2x0.8	11.0	45.0	126
8x2x0.8	17.0	85.0	293
12x2x0.8	19.0	126.0	373
16x2x0.8	21.0	166.0	461

CORES x CROSS-SEC. IN mm	APPROXIMATELY		
	OUTER DIAMETER Ø mm	COPPER WEIGHT Kg/Km	CABLE WEIGHT Kg/Km
20x2x0.8	23.0	206.0	519
32x2x0.8	28.0	326.0	786
40x2x0.8	32.0	407.0	985
52x2x0.8	35.0	529.0	1201



MICA/XL/LSF/SWA/LSF power cable 0.6/ 1 kV galvanized steel wire armoured, fire resistant BS 7846/ BS 6387 & CWZ



APPLICATIONS	
<p>They are used as power and control cables both in outdoor and indoor fixed installations. They can be buried directly into the ground. They are resistant to tensile strength and they also have antirodent protection. They are fire resistant and in the case of fire they appear a low level of smoke emission and zero halogen</p>	
CABLE STRUCTURE	TECHNICAL DATA
<p>Core: plain annealed flexible copper conductors Core Insulation: XLPE Core Code: coloured cores 2 cores brown, blue 3 cores brown, black, grey 4 cores brown, black, grey, blue ≥7 cores white with black numbers Inner Insulation: of LSF(low smoke, halogen free), colour black Armour: galvanized steel wires Outer Sheath: of LSF(low smoke, halogen free), colour black</p>	<p>Nominal Voltage: Uo/ U 0.6/ 1 kV Temperature Range: from -25°C up to +90°C Bending Radius: 8 x Ø cable Should not be installed at temperatures below 0°C</p>

CE= The above cables are conformed with the Low Voltage Directive 73/23 EEC, 93/68 EEC.

No.CORES, CROSS-SEC mm²	APPROXIMATELY		
	OUTER DIAMETER Ø mm	CABLE WEIGHT Kg/Km	GLAND SIZE mm
2x1.5	13.6	340	20S
3x1.5	14.2	380	20S
4x1.5	15.1	420	20S
7x1.5	17.3	500	20
12x1.5	22.1	820	25
19x1.5	25.8	1080	25
27x1.5	30.4	1550	32
37x1.5	33.4	1850	32
2x2.5	15.1	390	20S
3x2.5	15.7	430	20S
4x2.5	16.8	500	20
7x2.5	19.8	730	20
12x2.5	24.9	1020	25
19x2.5	29.5	1530	32
27x2.5	34.4	1950	40

No.CORES, CROSS-SEC mm²	APPROXIMATELY		
	OUTER DIAMETER Ø mm	CABLE WEIGHT Kg/K m	GLAND SIZE mm
2x4	16.1	460	20
3x4	16.9	530	20
4x4	18.1	700	20
7x4	21.6	840	25
2x6	17.3	640	20
3x6	18.1	730	20
4x6	20.3	850	20
2x10	20	820	20
3x10	21	940	25
4x10	22.6	1090	25
2x16	22.1	1025	25
3x16	23.5	1370	25
4x16	26	1560	25



MICA/XL/LSF/SWA/LSF power cable 0.6/ 1 kV galvanized steel wire armoured, fire resistant BS 7846/ BS 6387 & CWZ

No. CORES; CROSS-SEC mm ²	APPROXIMATELY		
	OUTER DIAMETER Ø mm	CABLE WEIGHT Kg/Km	GLAND SIZE mm
2x25	22	1200	25
3x25	27.4	1800	25
4x25	29.1	2100	32
2x35	24.8	1600	25
3x35	29.2	2100	32
4x35	32.2	2500	32
2x50	28	2000	32
3x50	33	2600	32
4x50	35	3200	40
2x70	30.7	2400	40
3x70	37	3400	40
4x70	40.2	4500	50S
2x95	35.3	3300	40
3x95	40.6	4500	50S
4x95	44	5600	50S
2x120	36.6	3800	40

No. CORES; CROSS-SEC mm ²	APPROXIMATELY		
	OUTER DIAMETER Ø mm	CABLE WEIGHT Kg/K m	GLAND SIZE mm
3x120	43.8	5500	50S
4x120	48.4	7200	50
2x150	39.3	4400	40
3x150	48	6900	50
4x150	52.5	8500	50
2x185	44.2	5700	50S
3x185	52	8200	50
4x185	57.1	10300	63S
2x240	48	7200	50
3x240	57.1	10200	63S
4x240	62	12800	63
2x300	51.8	8300	63S
3x300	63	12200	63
4x300	69.6	15600	75S
3x400	69.5	15000	75S
4x400	78	20400	75



For RACKS and their accessories there is a special catalogue



NHXCH FE180/E30 fire resistant power and control cables 0.6/1KV,with concentric conductor, for circuit integrity 30 minutes .



APPLICATIONS

They are used in indoor installations ,wherever high security specifications are required for the protection of human life and material assets from fire .When they are burning the circuit integrity maintains for 30 minutes . They present low smoke and zero halogen emission .They are not recommended for direct underground or water installations without conduits or tubes .

CABLE STRUCTURE

Cores : solid or stranded from bare copper according to DIN VDE 0295 cl.1 and 2.
Core insulation :
1st insulation: of high quality flame resistant, ceramic compound.
2nd insulation: of cross-linked polymer compound HxI1 according to DIN VDE 0266.
Colour code : according to DIN VDE 0293, from 3 cores and above contains green-yellow earth core .
Wrapping : of halogen free compound .
Screen : concentric conductor of copper wires wrapped with copper tape.
Separator : of plastic tape .
Outer sheath : of polyolefin compound HM4 according to DIN VDE 0276-604,CENELEC HD 604 S1,in orange colour.

re = round conductor, single wire .
 rm = round conductor, multiple-wire.

TECHNICAL DATA

Specifications : DIN VDE 0276-604
Temperature range : from -5°C to +90°C.
Nominal voltage : U₀/U 0.6/1KV .
Minimum bending radius : 15 x cable Ø .
Halogen free : DIN VDE 0482-267, EN 50267 and IEC 60754-2.
Flame retardant: DIN VDE 0482-265, EN 50265 and IEC 60332-1.
Reduced flame propagation :
 DIN VDE 0472-804/C, CENELEC HD 405.3 and IEC 60332-3 cat C and cat A.
Low smoke emission : DIN VDE 0482-268, EN 50268 and IEC 61034-1 .
Insulation integrity FE180: DIN VDE 0472-814, IEC 60331, NBN C30-004 cat.F3.
Functionality E30: DIN 41012-12

CE=The above mentioned cables are conformed with the Low Voltage Directive 73/23 EEC, 93/68 EEC.

CORES x CROSS-SEC IN mm ²	APPROXIMATELY		
	OUTER DIAMETRE Ø mm	COPPER WEIGHT Kg/Km	CABLE WEIGHT Kg/Km
2x1.5 re/1.5	14.0	52.0	272
2x2.5 re/2.5	15.0	80.0	325
2x4 re/4	16.0	123.0	411
2x6 re/6	17.0	182.0	496
2x10 re/10	19.0	312.0	670

CORES x CROSS-SEC. IN mm ²	APPROXIMATELY		
	OUTER DIAMETER Ø mm	COPPER WEIGHT Kg/Km	CABLE WEIGHT Kg/Km
3x1.5 re/1.5	15.0	66.0	302
3x2.5 re/2.5	16.0	104.0	365
3x4 re/4	17.0	161.0	467
3x6 re /6	18.0	240.0	571
3x10 re/10	20.0	408.0	783

NHXCH FE180/E30 fire resistant power and control cables 0.6/1KV, with concentric conductor, for circuit integrity 30 minutes.

CORES x CROSS-SEC. IN mm ²	APPROXIMATELY		
	OUTER DIAMETER Ø mm	COPPER WEIGHT Kg/Km	CABLE WEIGHT Kg/Km
3x16 mm/16	24.0	643.0	1148
3x35 mm/16	30.0	1003.0	1552
3x25 mm/16	27.0	1402.0	1941
3x50 mm/25	33.0	1723.0	2554
3x70 mm/35	38.0	2410.0	3484
3x95 mm/50	44.0	3296.0	4678
3x120 mm/70	46.0	4236.0	5700
3x150 mm/70	51.0	5100.0	6921
3x185 mm/95	57.0	6383.0	8639
3x240 mm/120	65.0	8242.0	11253
4x1.5 re /1.5	16.0	81.0	349
4x2.5 re/2.5	17.0	128.0	428
4x4 re /4	19.0	200.0	548
4x6 re/6	20.0	297.0	676

CORES x CROSS-SEC. IN mm ²	APPROXIMATELY		
	OUTER DIAMETER Ø mm	COPPER WEIGHT Kg/Km	CABLE WEIGHT Kg/Km
4x10 re/10	22.0	504.0	944
4x16 mm/16	26.0	796.0	1390
4x25 mm/16	30.0	1142.0	1403
4x35 mm/16	33.0	1526.0	2383
4x50 mm/25	37.0	2203.0	3179
4x70 mm/35	42.0	3082.0	4349
4x95 mm/50	48.0	4208.0	4838
4x120 mm/70	51.0	5388.0	7099
4x150 mm/70	57.0	6540.0	8690
4x185 mm/95	64.0	8159.0	10824
4x240 mm/120	72.0	10546.0	14134
7x1.5 re/2.5	18.0	133.0	492
30x1.5re/6	34.0	499.0	1564

For cross-sections , that are not mentioned in the above board , please contact our company.



For cable accessories there is a special catalogue .



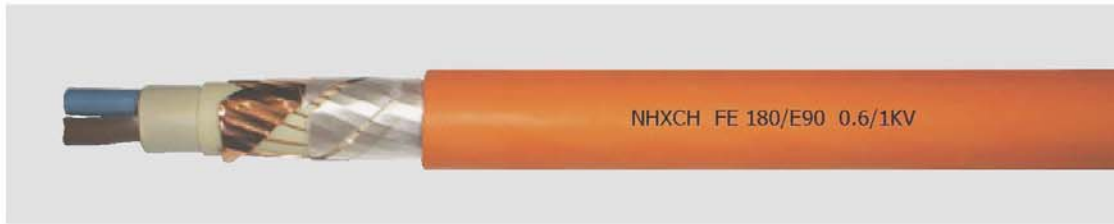
- 175 -

Ovo je crtez e sposobnost na Elektroluks-Bez. negovo pisarno obdaruje isti nesree da se precisno umozuva njih kopira bez soglasnost od **Elektroluks** vo sprotno se srnost posledici vo smislana clerovitel 63 i 64 od klicniot zakon R.M. (povreda na avtorsko pravo)

Elektroluks is registered trademark of Elektroluks companies in Macedonia and other countries



NHXCH FE180/E90 fire resistant power and control cables 0.6/1KV,with concentric conductor for circuit integrity 90 minutes .



APPLICATIONS	
<p>They are used in indoor installations ,wherever hight security specifications are required for the protection of human life and material assets from fire .When they are burning the circuit integrity maintains for 90 minutes . They present low smoke and zero halogen emmision .They are not recommended for direct underground or water installations without conduits or tubes .</p>	
CABLE STRUCTURE	TECHNICAL DATA
<p>Cores : solid or stranded from bare copper according to DIN VDE 0295 cl.1 and 2. Core insulation: 1st insulation: of high quality, flame resistant , ceramic compound . 2nd insulation : of cross-linked polymer compound HxI1 according to DIN VDE 0266. Colour code : according to DIN VDE 0293, from 3 cores and above contains yellow earth core . Wrapping : of halogen free compound . Screen: concetric conductor of copper wires , wrapped with copper tape. Seperator : of plastic tape . Outer sheath : of polyolefin compound HM4 according to DIN VDE 0276-604,CENELEC HD 604 S1, in orange colour.</p> <p>re = round conductor, single wire . rm = round conductor , multiple-wire.</p>	<p>Specification: DIN VDE 0276-604 Temperature range : from -5°C to +90°C. Nominal voltage : U₀/U 0.6/1KV . Minimum bending radius : 15 x cable Ø. Halogen free : DIN VDE 0482-267, EN 50267 and IEC 60754-2. Flame retardant : DIN VDE 0482-265, EN 50265 and IEC 60332-1. Reduced flame propagation : DIN VDE 0472-804/C, CENELEC HD 405.3 and IEC 60332-3 cat C and cat A. Low smoke emission : DIN VDE 0482-268, EN 50268 and IEC 61034-1 Insulation integrity FE180: DIN VDE 0472-814, IEC 60331. Funcionality E90: DIN 41012-12</p>

CE=The above mentioned cables are conformed with the Low Voltage Directive 73/23 EEC, 93/68 EEC.

CORES x CROSS SEC. IN mm ²	APPROXIMATELY		
	OUTER DIAMETER Ø mm	COPPER WEIGHT Kg/Km	CABLE WEIGHT Kg/Km
3x1.5 re/1.5	15.0	66.0	300
3x2.5 re/2.5	16.0	104.0	381
3x4 re/4	18.0	161.0	482
3x6 re /6	19.0	240.0	589
3x10 re/10	21.0	408.0	802
3x16 rm/16	25.0	643.0	1195

CORES x CROSS SEC. IN mm ²	APPROXIMATELY		
	OUTER DIAMETER Ø mm	COPPER WEIGHT Kg/Km	CABLE WEIGHT Kg/Km
3x25 rm/16	28.0	1003.0	1624
3x35 rm/16	31.0	1402.0	2001
3x50 rm/25	35.0	1723.0	2684
3x70 rm/35	39.0	2410.0	3620
3x95 mm/50	45.0	3296.0	4791
3x120 mm/70	47.0	4236.0	5818



NHXCH FE180/E90 fire resistant power and control cables 0.6/1KV, with concentric conductor for circuit integrity 90 minutes .

CORES x CROSS-SEC. IN mm ²	APPROXIMATELY		
	OUTER DIAMETER Ø mm	COPPER WEIGHT Kg/Km	CABLE WEIGHT Kg/Km
3x150 mm/70	52.0	5100.0	7025
3x185 mm/95	58.0	6383.0	8705
3x240 mm/120	65.0	8242.0	11271
4x1.5 re /1.5	16.0	81.0	367
4x2.5 re/2.5	17.0	128.0	447
4x4 re /4	19.0	200.0	569
4x6 re/6	20.0	297.0	699
4x10 re/10	23.0	504.0	981
4x16 mm/16	27.0	796.0	1433
4x25 mm/16	31.0	1142.0	1970
4x35 mm/16	34.0	1526.0	2493
4x50 mm/25	38.0	2203.0	3315
4x70 mm/35	43.0	3082.0	4479
4x95 mm/50	49.0	4208.0	5934
4x120 mm/70	52.0	5388.0	7205

CORESx CROSS-SEC. IN mm ²	APPROXIMATELY		
	OUTER DIAMETER Ø mm	COPPER WEIGHT Kg/Km	CABLE WEIGHT Kg/Km
4x150 mm/70	57.0	6540.0	8771
4x185 mm/95	64.0	8159.0	10859
4x240 mm/120	71.0	10546.0	14071
7x1.5 re/2.5	19.0	133.0	516
7x2.5 re/2.5	20.0	200.0	626
12x1.5 re/2.5	24.0	205.0	797
12x2.5 re/4	26.0	334.0	1007
24x1.5 re/6	33.0	413.0	1459
24x1.5re/10	36.0	696.0	1870
30x1.5 re/6	35.0	499.0	1689
30x2.5 re/10	38.0	840.0	2175

For cross-sections , that are not mentioned in the above board , please contact our company



For cable accessories there is a special catalogue .



- 177 -

Ovo je crtez e sposobnost na Elektroluks-Bez. njegovo pismeno odobruvanje istoi nesmee da se precisira, umnozava ni li kopira bez soglasnost od **Elektroluks** vo sprotno se snoset posledici vo smislana clenova 163 i 164 od klicniot zakon R.M. (povreda na autorsko pravo)

Elektroluks is registered trademark of Elektroluks companies in Macedonia and other countries



NHXH FE180/E30 fire resistant power and control cables 0.6/1KV, halogen free for circuit integrity 30 minutes.



APPLICATIONS

They are used in indoor installations, wherever high security specifications are required for the protection of human life and material assets from fire. When they are burning the circuit integrity maintains for 30 minutes. They present low smoke and zero halogen emission. They are not recommended for directly underground or water installations without conduits or tubes.

CABLE STRUCTURE

Cores : solid or stranded from bare copper according to DIN VDE 0295 cl. 1 and 2.
Core insulation :
1st insulation : of high quality flame resistant, ceramic compound.
2nd insulation : of cross-linked polymer compound HxI1 according to DIN VDE 0266.
Colour code : according to DIN VDE 0293, from 3 cores and above contains green-yellow earth core.
Wrapping : of halogen free compound.
Outer sheath: of polyolefin compound HM4, according to DIN VDE 0276-604, CENELEC HD 604 S1, in orange colour.

re = round conductor, single wire.
 rm = round conductor, multiple-wire.

TECHNICAL DATA

Specifications: DIN VDE 0276-604
Temperature range : from -5°C to +90°C.
Nominal voltage : U_o/U 0.6/1KV.
Minimum bending radius : 15 x cable Ø.
Halogen free : DIN VDE 0482-267, EN 50267 and IEC 60754-2.
Flame retardant : DIN VDE 0482-265, EN 50265 and IEC 60332-1.
Reduced flame propagation: DIN VDE 0472-804/C, CENELEC HD 405.3 and IEC 60332-3 cat C and cat A.
Low smoke emission : DIN VDE 0482-268, EN 50268 and IEC 61034-1
Insulation integrity FE180: DIN VDE 0472-814, IEC 60331, NBN C30-004 cat F3
Functionality E30: DIN 41012-12

CE=The above mentioned cables are conformed with the Low Voltage Directive 73/23 EEC, 93/68 EEC.

CORES x CROSS-SEC. IN mm ²	APPROXIMATELY		
	OUTER DIAMETER Ø mm	COPPER WEIGHT Kg/Km	CABLE WEIGHT Kg/Km
1x4 re	8.0	38.0	104
1x6 re	8.0	58.0	129
1x10 re	9.0	96.0	176
1x16 rm	11.0	154.0	252
1x25 rm	12.0	240.0	358
1x35 rm	13.0	336.0	460
1x50 rm	15.0	480.0	601
1x70 rm	17.0	672.0	824

CORES CROSS-SEC. IN mm ²	APPROXIMATELY		
	OUTER DIAMETER Ø mm	COPPER WEIGHT Kg/Km	CABLE WEIGHT Kg/Km
1x95 rm	19.0	912.0	1103
1x120 mm	20.0	1152.0	1332
1x150 mm	22.0	1440.0	1664
1x185 mm	24.0	1776.0	2048
1x240 mm	28.0	2304.0	2680
1x300 mm	31.0	2880.0	3200
2x1.5 re	12.0	29.0	224

NHXH FE180/E90 fire resistant power and control cables 0.6/1KV, halogen free for circuit integrity 90 minutes .



APPLICATIONS

They are used in indoor installations , wherever high security specifications are required for the protection of the human life and material assets from fire. When they are burning the circuit integrity maintains for 90 minutes. They present low smoke and zero halogen emission. They are not recommended for direct underground or water installations without conduits or tubes.

CABLE STRUCTURE

Cores : solid or stranded from bare copper according to DIN VDE 0295 cl.1 and 2.

Insulation resistance :

1st insulation : of high quality flame resistant ceramic compound .

2nd insulation: of cross-linked polymer compound HxI1 according to DIN VDE 0266.

Colour code : according to DIN VDE 0293

from 3 cores and above contains yellow green earth core

Wrapping: of halogen free compound.

Outer sheath : of polyolefin compound HM4, according to DIN VDE 0276-604, CENELEC HD 604 S1, in orange colour.

re =round conductor , single-wire .

rm =ound conductor, multi wire .

TECHNICAL DATA

Specifications: DIN VDE 0276-604

Temperature range : from -5°C to +90°C.

Nominal voltage : U₀/U 0.6/1KV .

Minimum bending radius : 12 x cable Ø .

Halogen free : DIN VDE 0482-267, EN 50267 and IEC 60754-2.

Flame retardant : DIN VDE 0482-265, EN 50265 and IEC 60332-1.

Reduced flame propagation :

DIN VDE 0472-804/C, CENELEC HD 405.3 and IEC 60332-3 cat C and cat A.

Low smoke emission: DIN VDE 0482-268, EN 50268 and IEC 61034-1

Insulation integrity FE180: DIN VDE 0472-814, IEC 60331 .

Functionality E90: DIN 41012-12

CE= The above mentioned cables are conformed with the Low Voltage Directive 73/23 EEC,93/68 EEC

CORES x CROSS-SEC. IN mm ²	APPROXIMETLY		
	OUTER DIAMETER Ø mm	COPPER WEIGHT Kg/Km	CABLE WEIGHT Kg/Km
1x16 mm	12.0	154.0	287
1x25 mm	13.0	240.0	397
1x35 mm	15.0	336.0	520
1x50 mm	16.0	480.0	672
1x70 mm	17.0	672.0	913
1x95 mm	19.0	912.0	1122
1x120 mm	21.0	1152.0	1353
1x150 mm	23.0	1440.0	1686

CORES x CROSS-SEC. IN mm ²	APPROXIMETLY		
	OUTER DIAMETER Ø mm	COPPER WEIGHT Kg/Km	CABLE WEIGHT Kg/Km
1x185 mm	25.0	1776.0	2073
1x240 mm	29.0	2304.0	2880
1x300 mm	31.0	2880.0	3444
1x400 mm	34.0	3840	4316
2x1.5 re	13.0	29.0	245
2x2.5 re	14.0	48.0	289
2x4 re	15.0	77.0	367

NHXH FE180/E90 fire resistant power and control cable 0.6/1KV, halogen free for circuit integrity 90 minutes.

CORES x CROSS-SEC. IN mm ²	APROXIMATELY		
	OUTER DIAMETER Ø mm	COPPER WEIGHT Kg/Km	CABLE WEIGHT Kg/Km
2x6 re	16.0	115.0	440
2x10 re	18.0	192.0	574
2x16 rm	21.0	307.0	851
2x25 rm	24.0	480.0	1168
2x35 rm	27.0	672.0	1491
2x50 rm	30.0	960.0	1938
2x70 rm	34.0	1344.0	2609
2x95 rm	39.0	1824.0	3421
2x120 rm	41.0	2304.0	4040
3x1.5 re	14.0	43.0	274
3x2.5 re	15.0	72.0	347
3x4 re	16.0	115.0	423
3x6 re	17.0	173.0	515
3x10 re	18.0	288.0	686
3x16 rm	23.0	461.0	1021
3x25 rm	26.0	720.0	1452
3x35 rm	29.0	1008.0	1831
3x50 rm	33.0	1440.0	2418
3x70 rm	37.0	2016.0	3282
3x95 rm	42.0	2736.0	4319
3x120 rm	44.0	3456.0	5144
3x150 rm	49.0	4320.0	6353
3x185 rm	54.0	5328.0	7763
3x240 rm	61.0	6912.0	10083
3x35+16 rm	30.0	1162.0	2025
3x50+25 rm	34.0	1680.0	2726
3x70+35 rm	39.0	2352.0	3676
3x95+50 rm	44.0	3216.0	4831
3x120+70 rm	47.0	4128.0	5903
3x150+70 rm	51.0	4992.0	7064
3x185+95 rm	57.0	6240.0	8759
3x240+120 rm	63.0	8064.0	11299
4x1.5 re	15.0	58.0	342
4x2.5 re	16.0	96.0	414

CORES x CROSS-SEC. IN mm ²	APPROXIMATELY		
	OUTER DIAMETER Ø mm	COPPER WEIGHT Kg/Km	CABLE WEIGHT Kg/Km
4x4 re	17.0	154.0	510
4x6 re	19.0	230.0	626
4x10 re	21.0	384.0	866
4x16 rm	25.0	614.0	1261
4x25 rm	29.0	960.0	1801
4x35 rm	32.0	1344.0	2327
4x50 rm	36.0	1920.0	3049
4x70 rm	41.0	2688.0	4139
4x95 rm	46.0	3648.0	5458
4x120 rm	49.0	4608.0	6527
4x150 rm	54.0	5760.0	8094
4x185 rm	60.0	7104.0	9910
4x240 rm	67.0	9216.0	12870
5x1.5 re	16.0	72.0	399
5x2.5 re	18.0	120.0	485
5x4 re	19.0	192.0	600
5x6 re	21.0	288.0	770
5x10 re	23.0	480.0	1037
5x16 rm	28.0	768.0	1548
5x25 rm	32.0	1200.0	2207
5x35 rm	35.0	1680.0	2825
5x50 rm	40.0	2500.0	3722
5x70 rm	45.0	3360.0	5063
7x1.5 re	18.0	101.0	482
7x2.5 re	19.0	168.0	592
7x4 re	21.0	269.0	771
10x1.5 re	22.0	144.0	690
10x2.5 re	24.0	240.0	848
12x1.5 re	23.0	173.0	762
12x2.5 re	25.0	288.0	744
24x1.5 re	32.0	346.0	1383

For cross-sections, that are not mentioned in the above board ,please our company .

