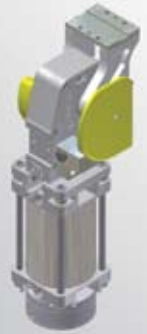


# UAGP300

## UNIVERSAL Power Pivot



|   |   |   |   |   |   |   |   |   |   |   |
|---|---|---|---|---|---|---|---|---|---|---|
| U | A | G | P | 3 | 0 | 0 | V | U | D | B |
| 1 |   | 2 | 3 |   |   | 4 | 5 | 6 | 7 |   |

|                 |                  |               |
|-----------------|------------------|---------------|
| <b>1</b> Series | <b>2</b> Version | <b>3</b> Size |
|-----------------|------------------|---------------|

**UAG** = UNIVERSAL power pivot  
with adjustable pivot rotation  
in 15° intervals.  
Possible opening angles:  
30° - 45° - 60° - 75° - 90° - 105°  
- 120° (standard)

**P** = Pneumatic

**300**

|                           |                        |   |
|---------------------------|------------------------|---|
| <b>4</b> Posizione tavola | <b>5</b> Sensing style | <b>6</b> Shock absorbers mount position |
|---------------------------|------------------------|---|

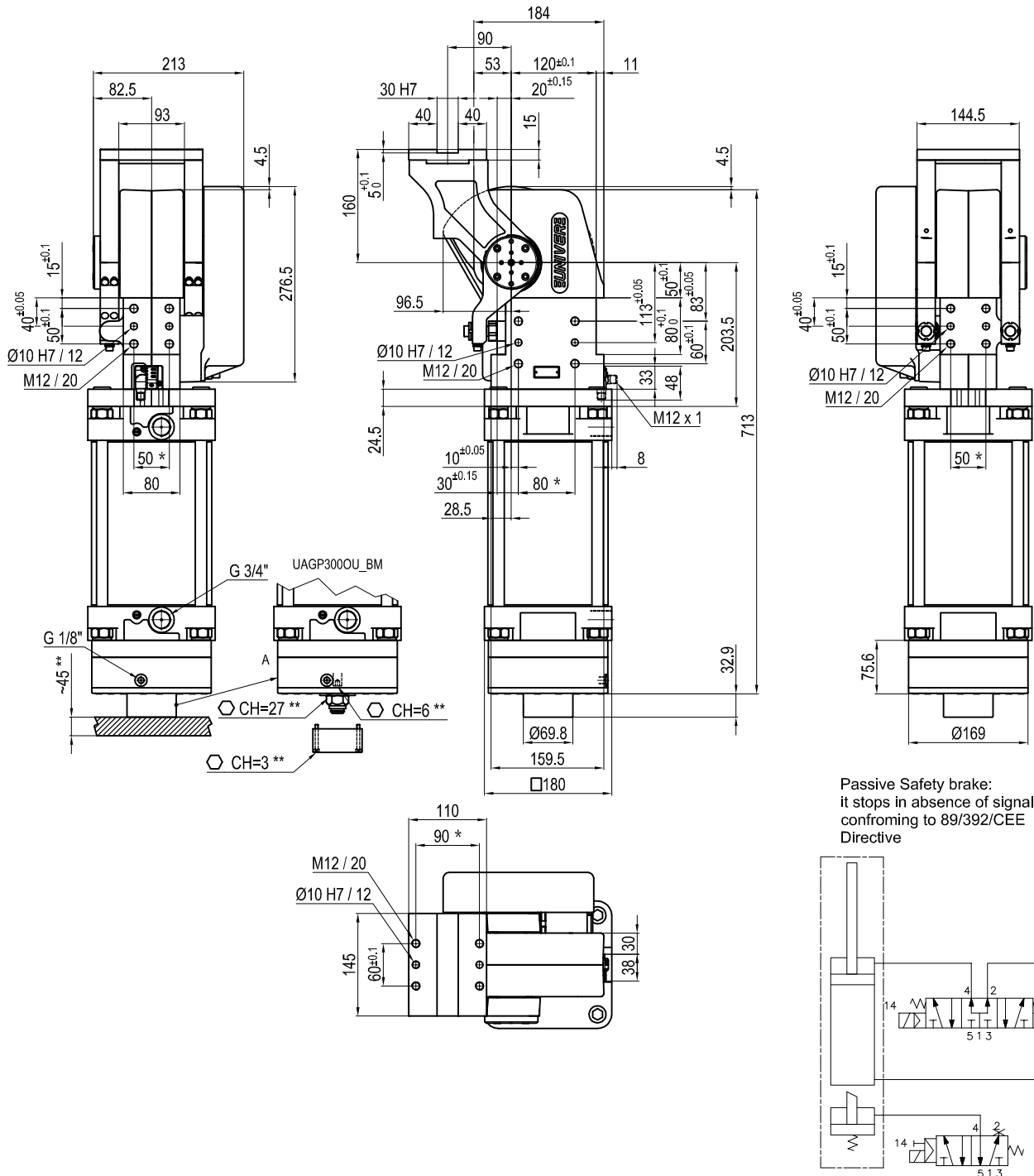
**V** = Vertical 180°  
**O** = Horizontal 90°

**U** = Electronic sensor with M12 swivel  
connector, 24 Vcc.

**D** = Right  
**S** = Left

|                       |
|-----------------------|
| <b>7</b> Brake system |
|-----------------------|

**B** = With safety brake



| Size | Holding moment | Max. torque at the rotary table 0,55 MPa | Weight   |
|------|----------------|--|----------|
| 300  | 6000 Nm        | 300 Nm                                   | 43.9 Kg. |

\* : TOLERANCE BETWEEN DOWEL HOLES ± 0.02, TO SCREW HOLES ± 0.1  
 \*\* : AREA TO ACCESS THE MANUAL UNBLOCKING OF THE SAFETY BRAKE,  
 PRODUCT CODE: UAGP300OU\_BM

| Date     | Change                   |
|----------|--------------------------|
| 25.06.08 | Protection covers update |

Min./Max. operating pressure: **0,4 / 0,8 MPa**  
 Operating temperature: **5° ÷ 45° C**

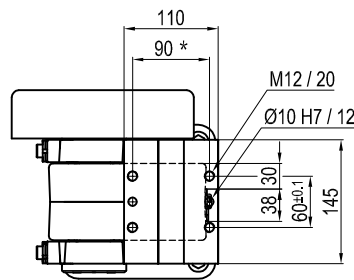
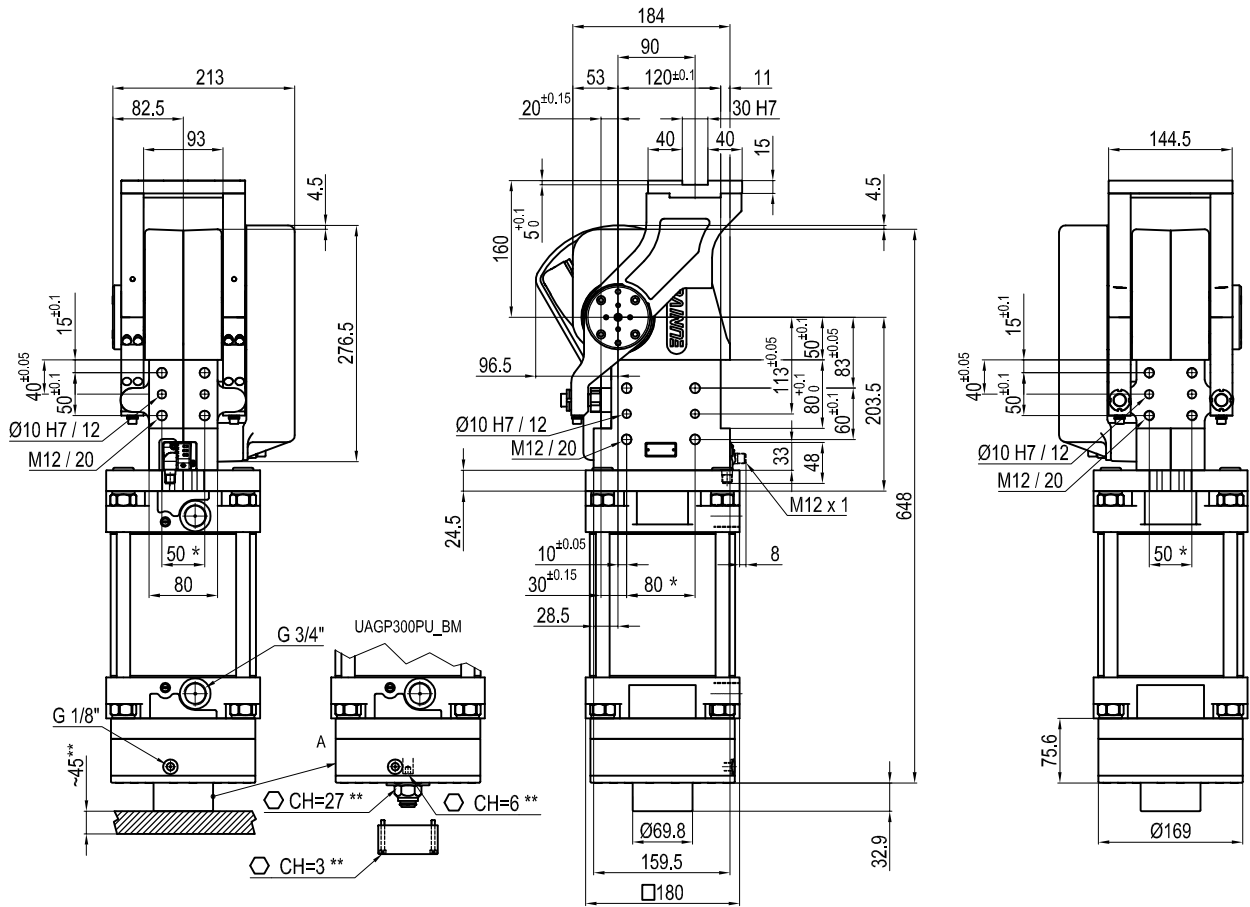
Pivot rotation in degrees: **15° - 30° - 45° - 60° - 75° - 90° - 105° - 120°**  
 adjustable opening angles in 15° increments

Horizontal arm mount position

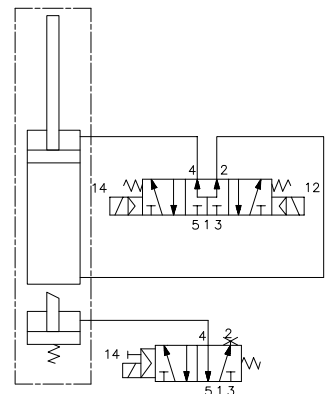
Electronic 24 Vdc sensor with M12 swivel connector that can be orientated at 0° or 90°

Protection class: **IP 65**

Subject to technical modifications without notice.



Passive Safety brake:  
it stops in absence of signal  
conforming to 89/392/CEE  
Directive



| Size | Holding moment | Max. torque at the rotary table 0,55 MPa | Weight   |
|------|----------------|--|----------|
| 300  | 6000 Nm        | 300 Nm                                   | 43.9 Kg. |

\* : TOLERANCE BETWEEN DOWEL HOLES  $\pm 0.02$ , TO SCREW HOLES  $\pm 0.1$   
 \*\* : AREA TO ACCESS THE MANUAL UNBLOCKING OF THE SAFETY BRAKE,  
 PRODUCT CODE: UAGP300PU\_BM

Min./Max. operating pressure: **0,4 / 0,8 MPa**  
 Operating temperature: **5° ÷ 45° C**

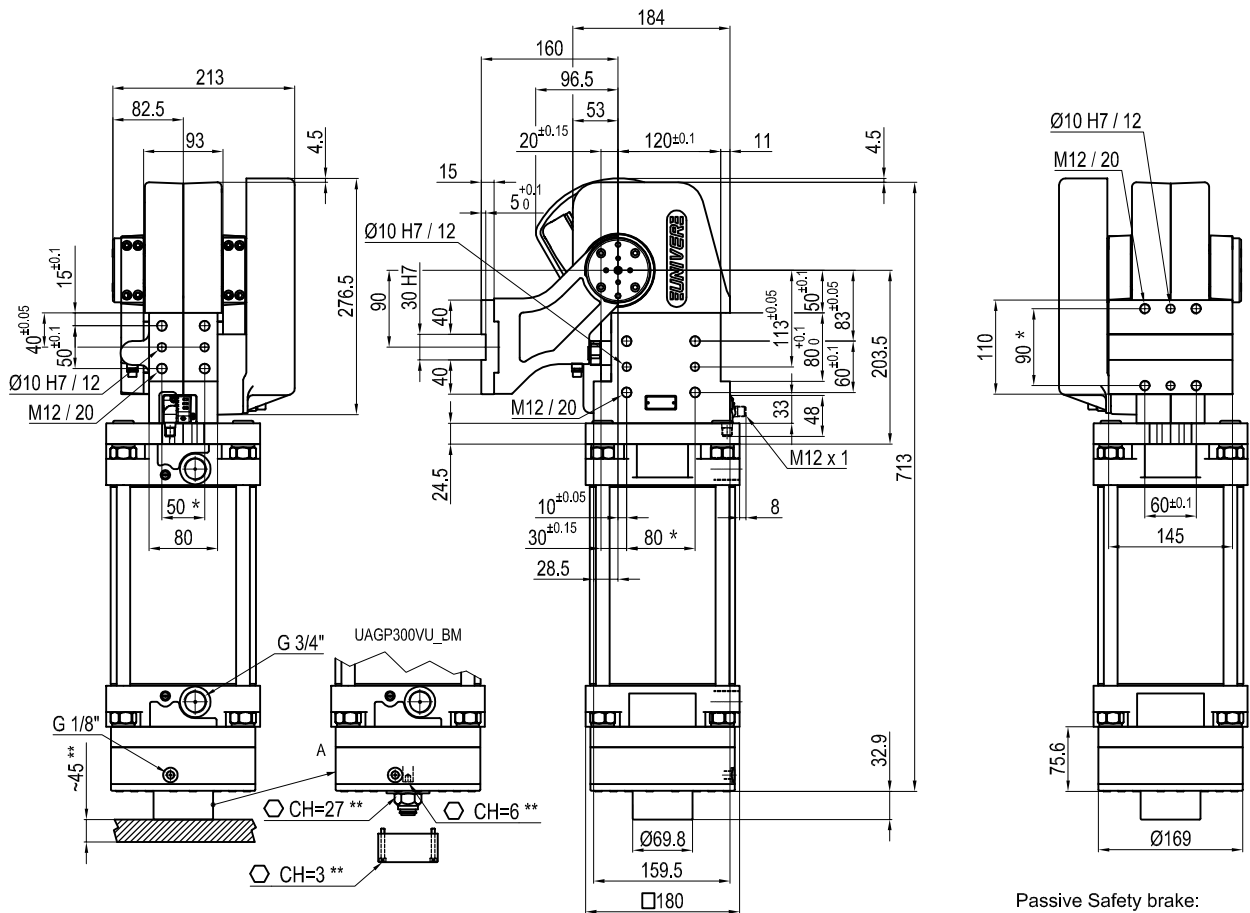
Pivot rotation in degrees: **15° - 30° - 45° - 60°** adjustable opening angles in 15° increments

Horizontal arm mount position

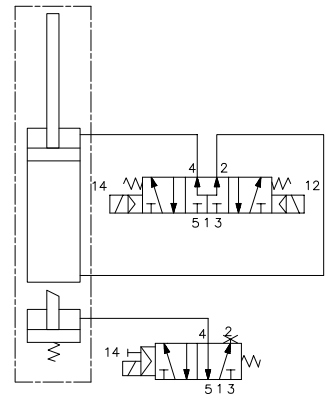
Electronic 24 Vdc sensor with M12 swivel connector that can be orientated at 0° or 90°

Protection class: **IP 65**

Subject to technical modifications without notice.



Passive Safety brake:  
it stops in absence of signal  
conforming to 89/392/CEE  
Directive



| Size | Holding moment | Max. torque at the rotary table 0,55 MPa | Weight   |
|------|----------------|--|----------|
| 300  | 6000 Nm        | 300 Nm                                   | 42.9 Kg. |

\* : TOLERANCE BETWEEN DOWEL HOLES  $\pm 0.02$ , TO SCREW HOLES  $\pm 0.1$   
 \*\* : AREA TO ACCESS THE MANUAL UNBLOCKING OF THE SAFETY BRAKE,  
 PRODUCT CODE: UAGP300VU\_BM

| Date     | Change                   |
|----------|--------------------------|
| 25.06.08 | Protection covers update |

Subject to technical modifications without notice.

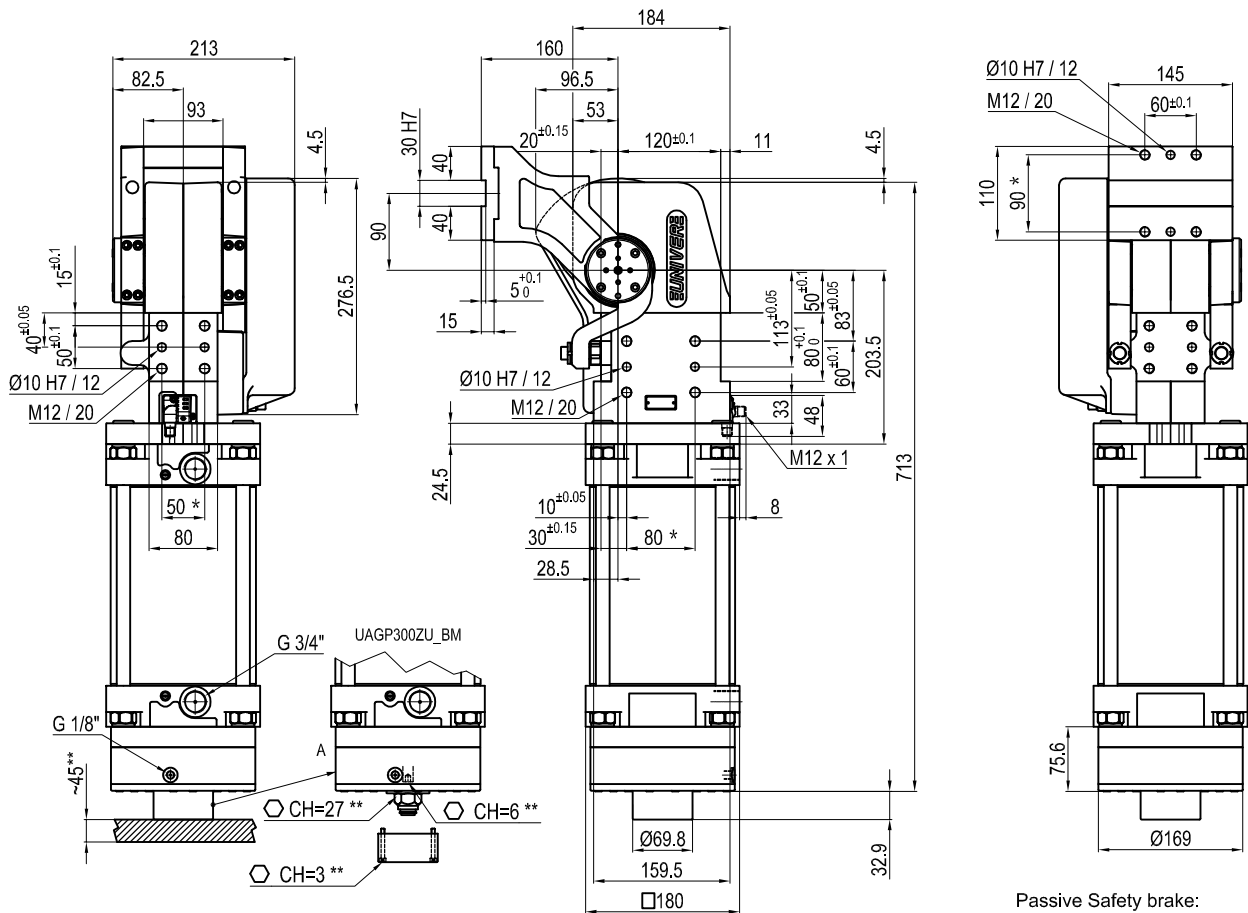
Min./Max. operating pressure: **0,4 / 0,8 MPa**  
 Operating temperature: **5° ÷ 45° C**

Pivot rotation in degrees: **15° - 30° - 45° - 60° - 75° - 90° - 105° - 120°**  
 adjustable opening angles in 15° increments

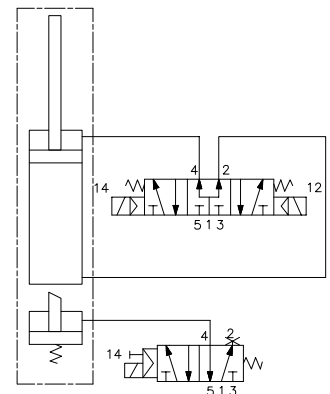
Vertical arm mount position

Electronic 24 Vdc sensor with M12 swivel connector  
 that can be orientated at 0° or 90°

Protection class: **IP 65**



Passive Safety brake:  
it stops in absence of signal  
conforming to 89/392/CEE  
Directive



| Size | Holding moment | Max. torque at the rotary table 0,55 MPa | Weight |
|------|----------------|--|--------|
| 300  | 6000 Nm        | 300 Nm                                   | 44 Kg. |

\* : TOLERANCE BETWEEN DOWEL HOLES  $\pm 0.02$ , TO SCREW HOLES  $\pm 0.1$   
 \*\* : AREA TO ACCESS THE MANUAL UNBLOCKING OF THE SAFETY BRAKE,  
 PRODUCT CODE: UAGP300ZU\_BM

Min./Max. operating pressure: **0,4 / 0,8 MPa**  
 Operating temperature: **5° ÷ 45° C**

Pivot rotation in degrees: **15° - 30° - 45° - 60° - 75° - 90° - 105° - 120°**  
 adjustable opening angles in 15° increments

Vertical arm mount position

Electronic 24 Vdc sensor with M12 swivel connector  
 that can be orientated at 0° or 90°

Protection class: **IP 65**

Subject to technical modifications without notice.