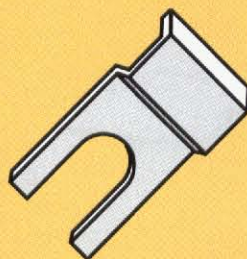
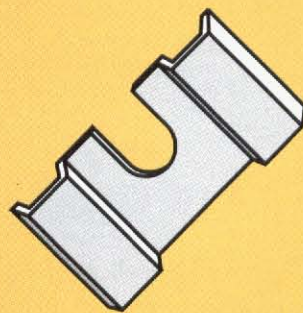




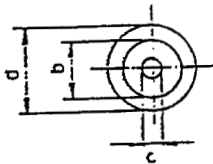
MEGA



**KABELSCHUHE UND
FÜHRUNGSTELLER
TERMINALS AND CAPS**

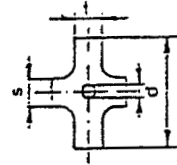
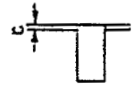
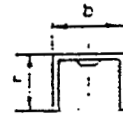
MEGA

Führungsteller - Terminals - Spezialarmaturen

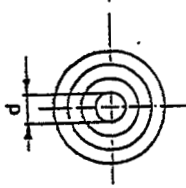
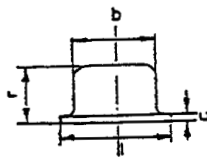


d'

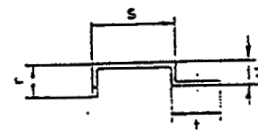
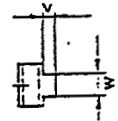
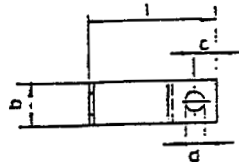
13.100.xx



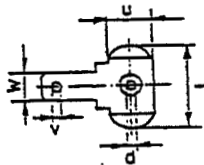
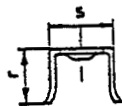
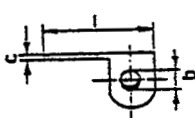
13.104.xx



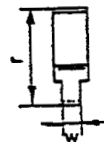
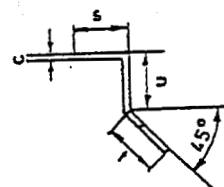
13.101.xx



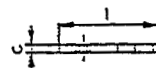
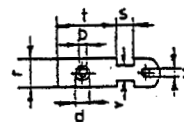
13.105.xx



13.102.xx



13.106.xx

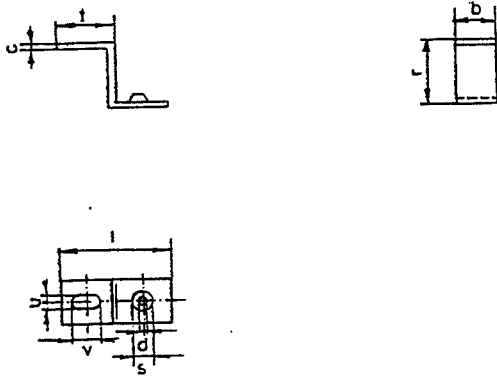


13.103.xx

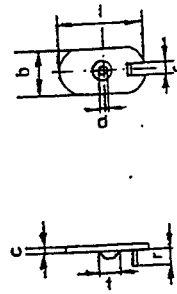
13.107.xx

MEGA

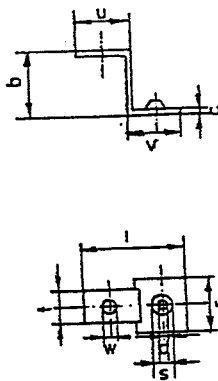
Führungsteller - Terminals - Spezialarmaturen



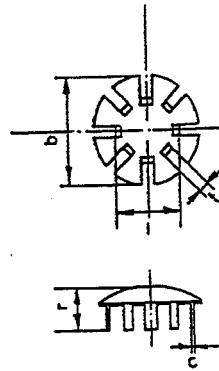
13.108.xx



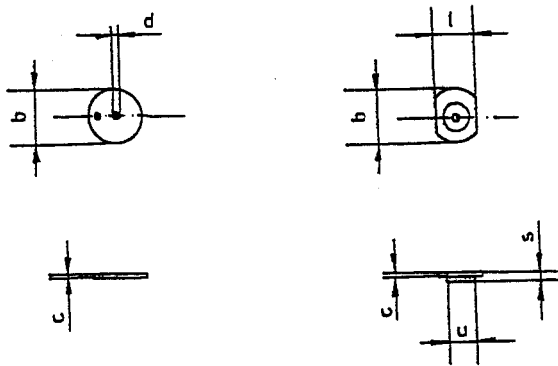
13.112.xx



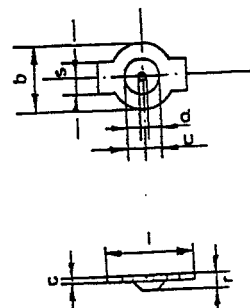
13.109.xx



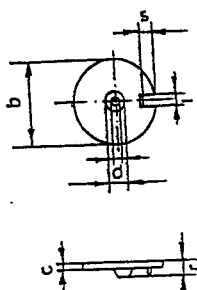
13.113.xx



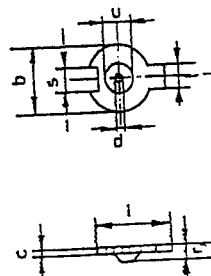
13.110.xx



13.114.xx



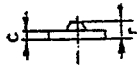
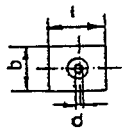
13.111.xx



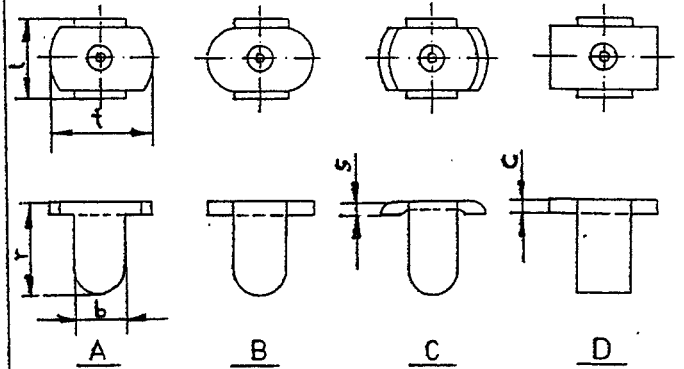
13.115.xx

MEGA

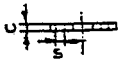
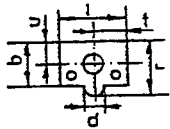
Führungsteller - Terminals - Spezialarmaturen



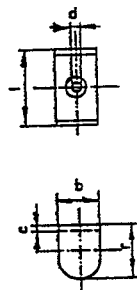
13.116.xx



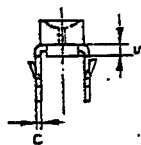
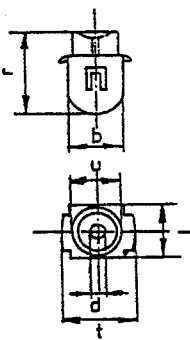
13.120.xx



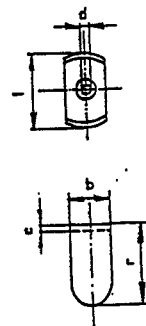
13.117.xx



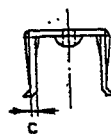
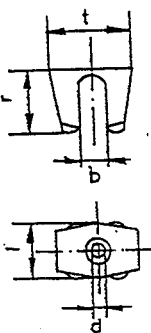
13.121.xx



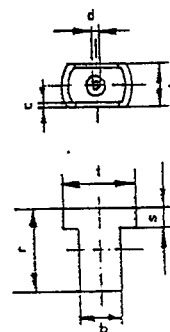
13.118.xx



13.122.xx



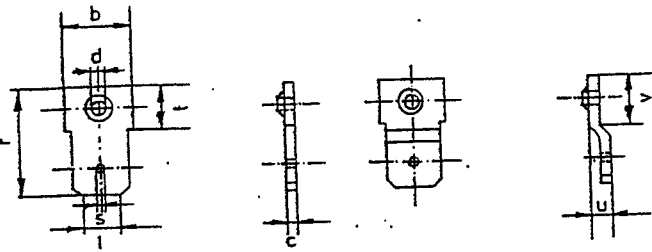
13.119.xx



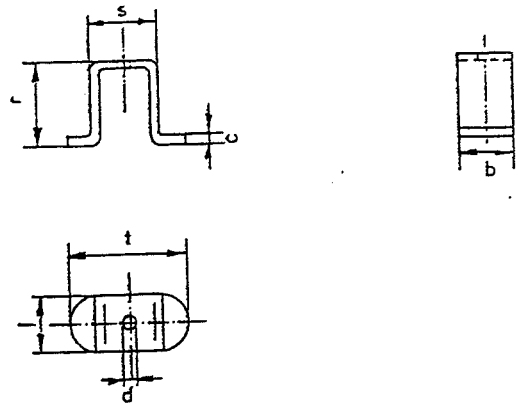
13.123.xx

MEGA

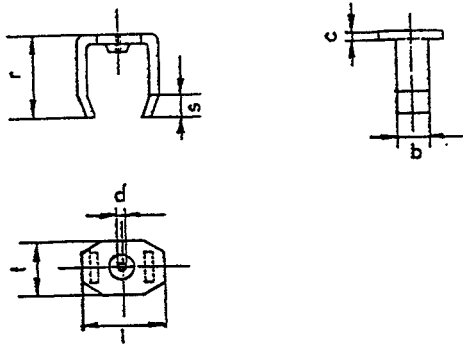
Führungsteller - Terminals - Spezialarmaturen



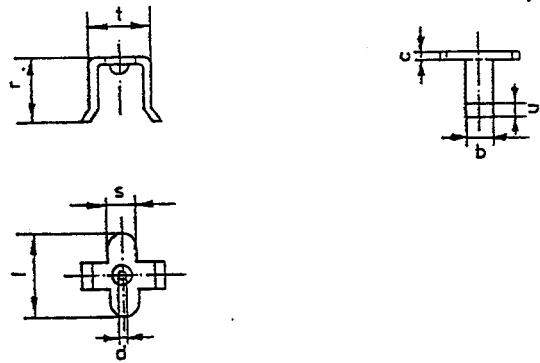
13.124.xx



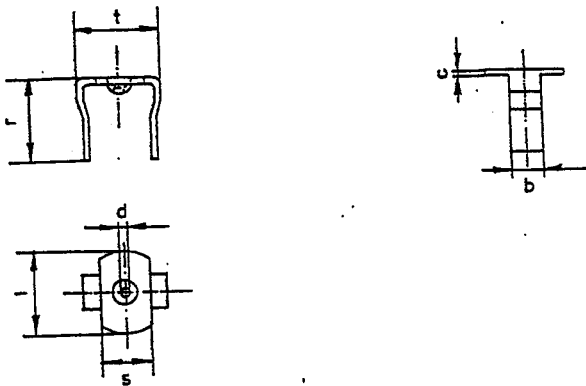
13.128.xx



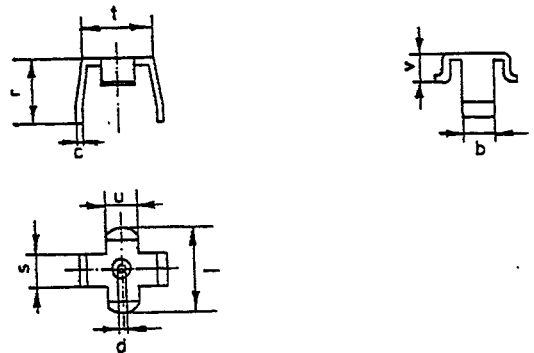
13.125.xx



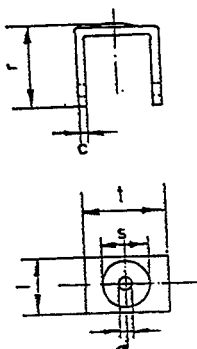
13.129.xx



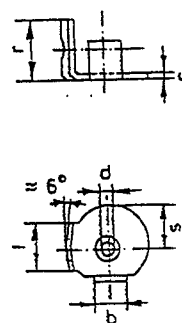
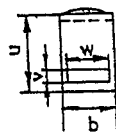
13.126.xx



13.130.xx



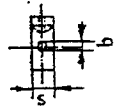
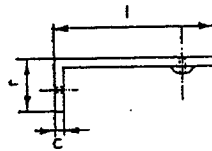
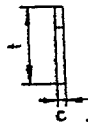
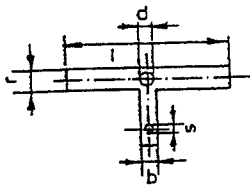
13.127.xx



13.131.xx

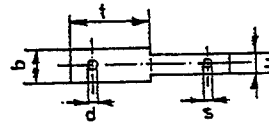
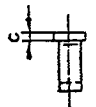
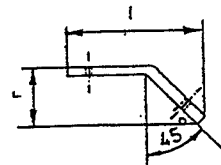
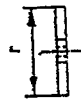
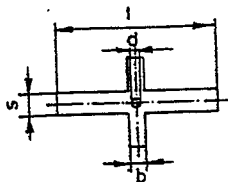
MEGA

Führungsteller - Terminals - Spezialarmaturen



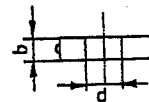
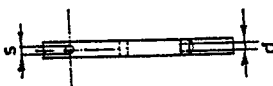
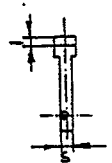
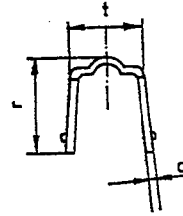
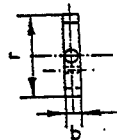
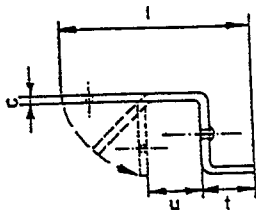
13.132.xx

13.136.xx



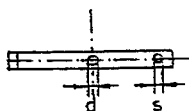
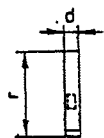
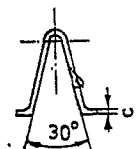
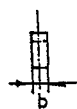
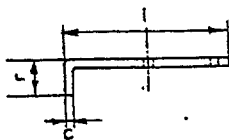
13.133.xx

13.137.xx



13.134.xx

13.138.xx

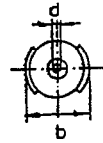
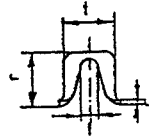
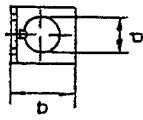
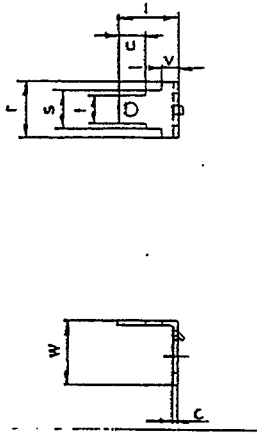


13.135.xx

13.139.xx

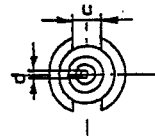
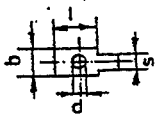
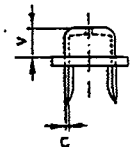
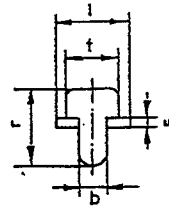
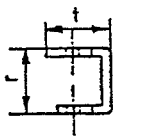
MEGA

Führungsteller - Terminals - Spezialarmaturen



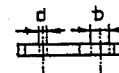
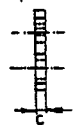
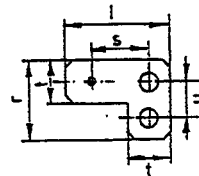
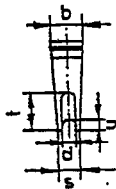
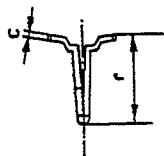
13.140.xx

13.144.xx



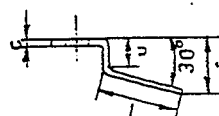
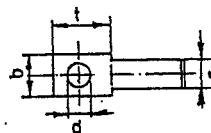
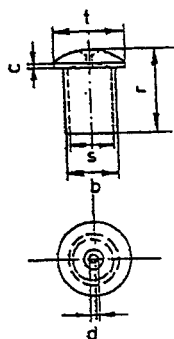
13.141.xx

13.145.xx



13.142.xx

13.146.xx

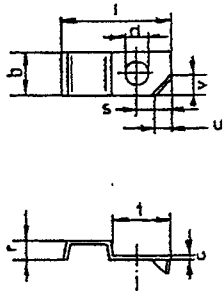


13.143.xx

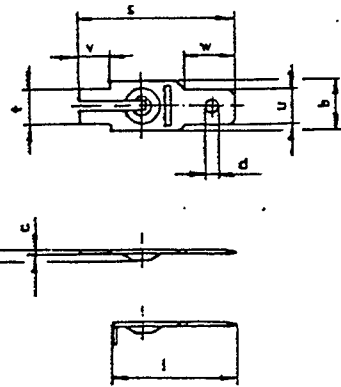
13.147.xx

MEGA

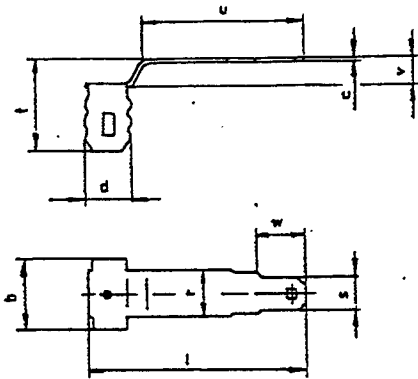
Führungsteller - Terminals - Spezialarmaturen



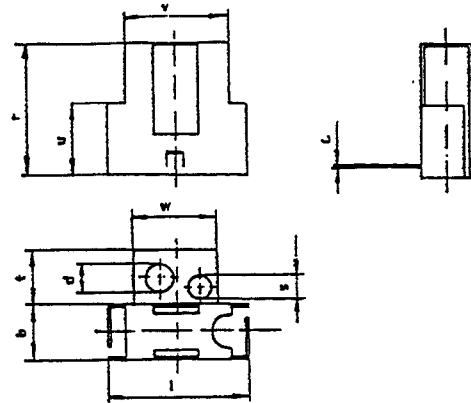
13.148.xx



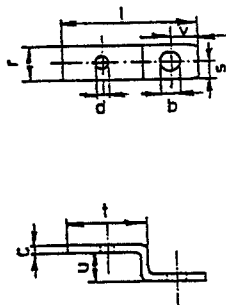
13.152.xx



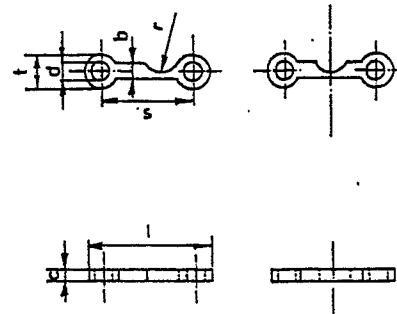
13.149.xx



13.153.xx



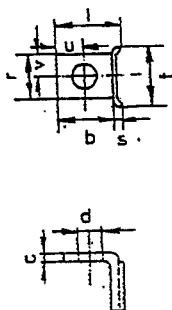
13.150.xx



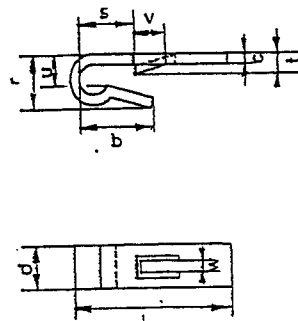
FORM : A

FORM : B

13.154.xx



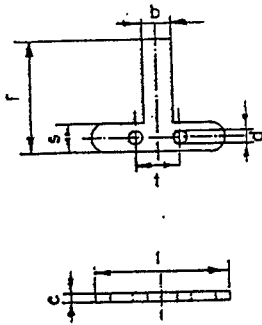
13.151.xx



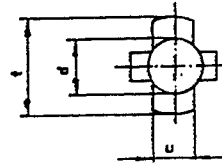
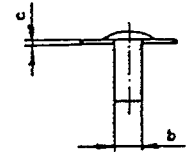
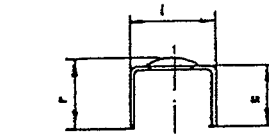
13.155.xx

MEGA

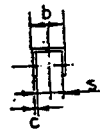
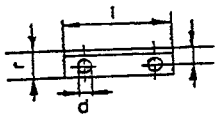
Führungsteller - Terminals - Spezialarmaturen



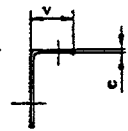
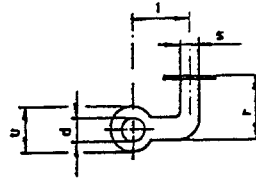
13.156.xx



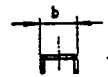
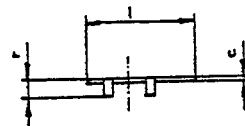
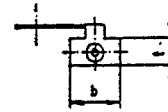
13.160.xx



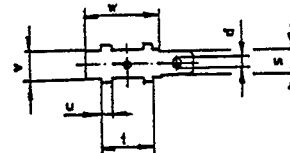
13.157.xx



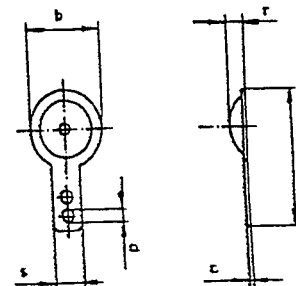
13.161.xx



13.158.xx



13.162.xx

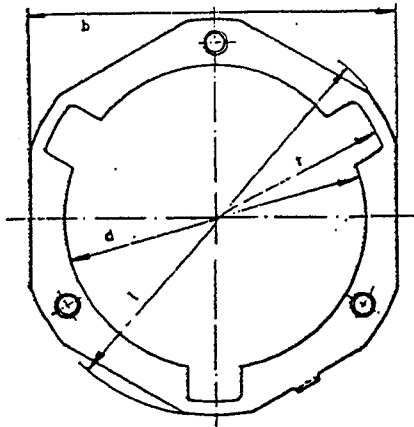


13.159.xx

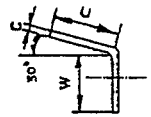
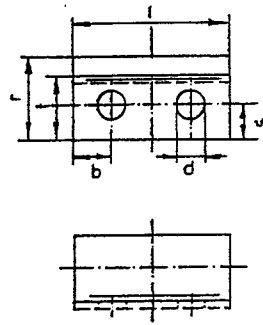
13.163.xx

MEGA

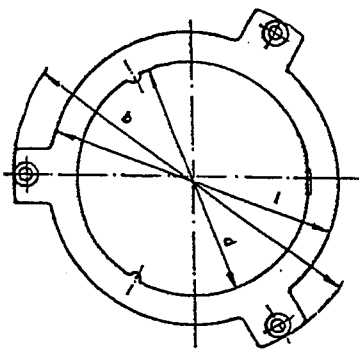
Führungsteller - Terminals - Spezialarmaturen



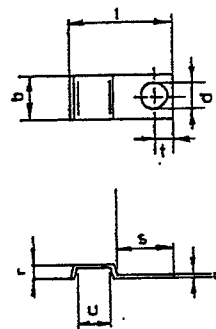
13.164.xx



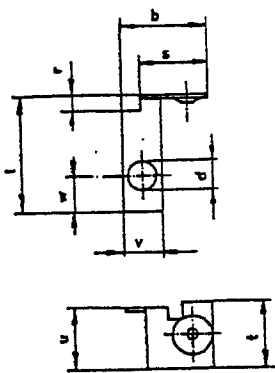
13.168.xx



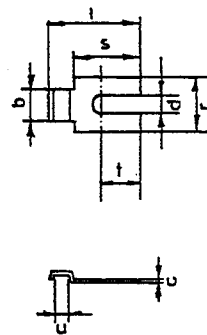
13.165.xx



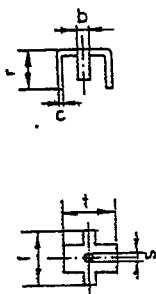
13.169.xx



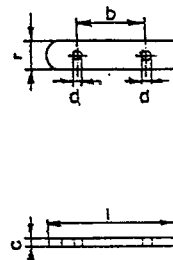
13.166.xx



13.170.xx



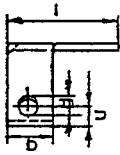
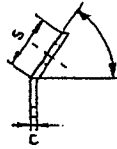
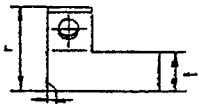
13.167.xx



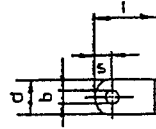
13.171.xx

MEGA

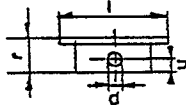
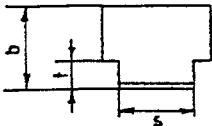
Führungsteller - Terminals - Spezialarmaturen



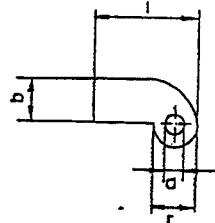
13.188.xx



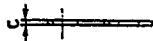
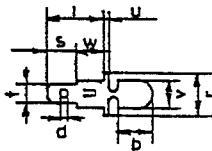
13.192.xx



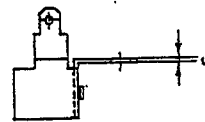
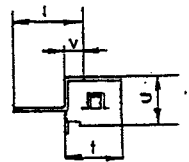
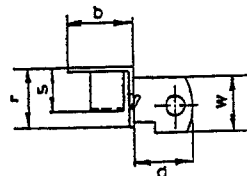
13.189.xx



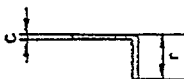
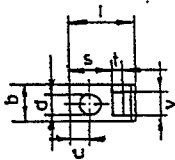
13.193.xx



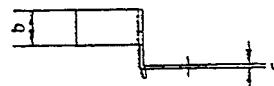
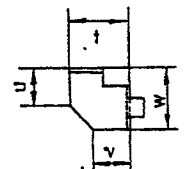
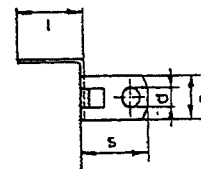
13.190.xx



13.194.xx



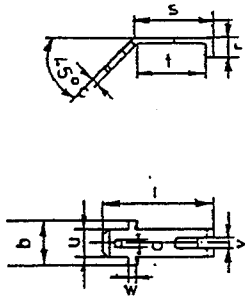
13.191.xx



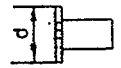
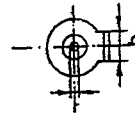
13.195.xx

MEGA

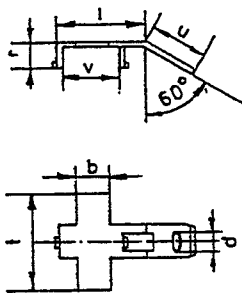
Führungsteller - Terminals - Spezialarmaturen



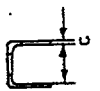
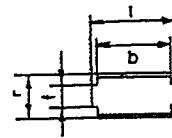
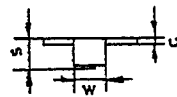
13.180.xx



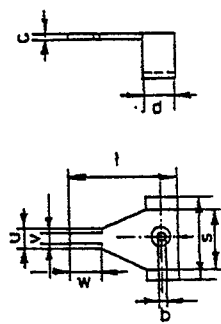
13.184.xx



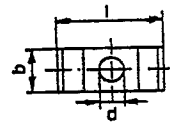
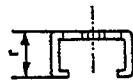
13.181.xx



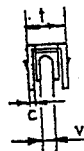
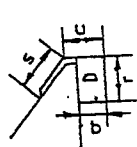
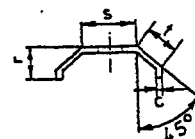
13.185.xx



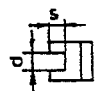
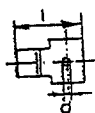
13.182.xx



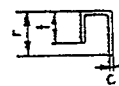
13.186.xx



13.183.xx

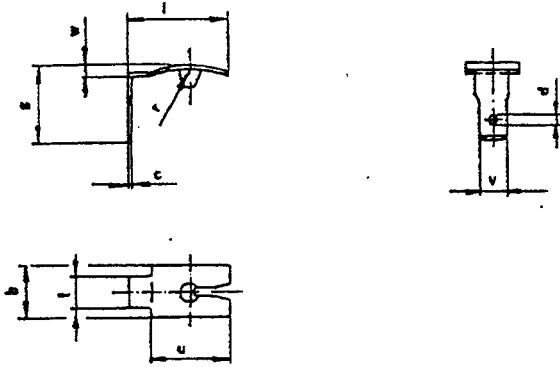


13.187.xx

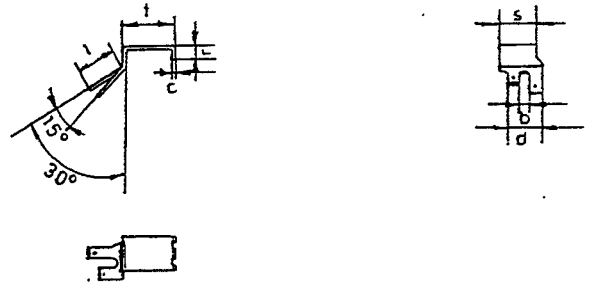


MEGA

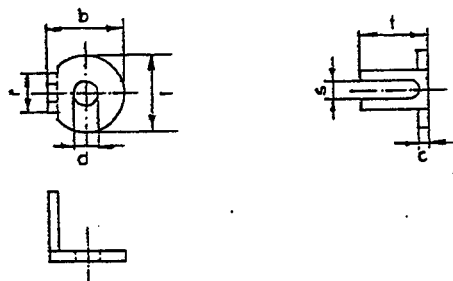
Führungsteller - Terminals - Spezialarmaturen



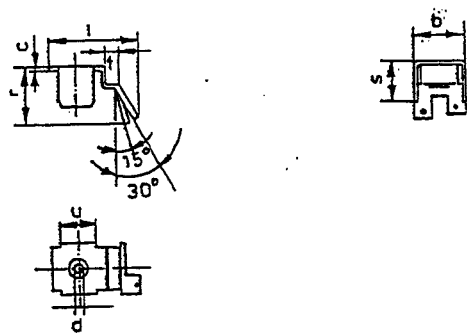
13.172.xx



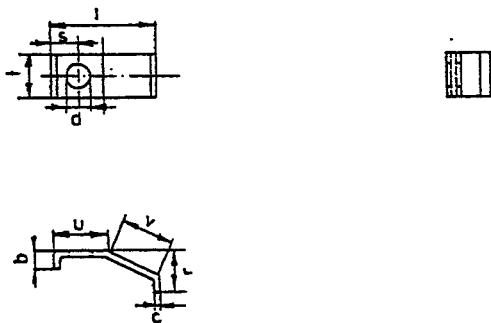
13.176.xx



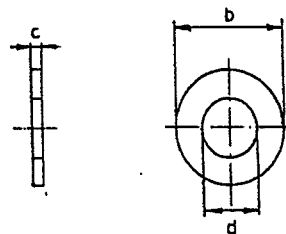
13.173.xx



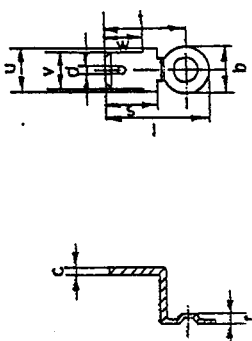
13.177.xx



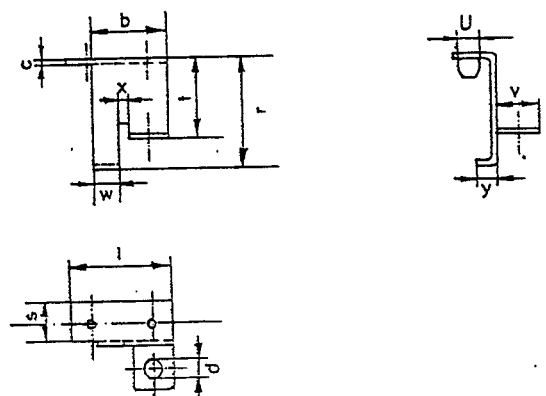
13.174.xx



13.178.xx



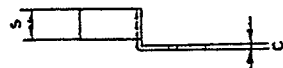
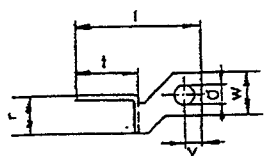
13.175.xx



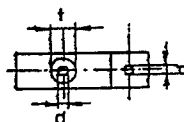
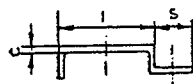
13.179.xx

MEGA

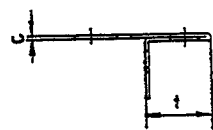
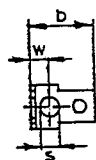
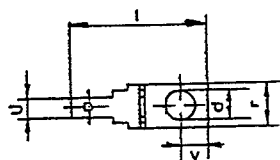
Führungsteller - Terminals - Spezialarmaturen



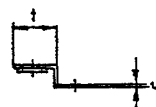
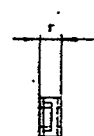
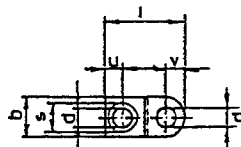
13.196.xx



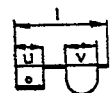
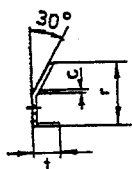
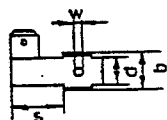
13.200.xx



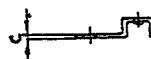
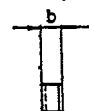
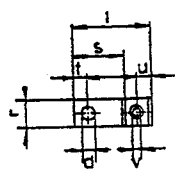
13.197.xx



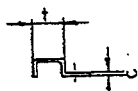
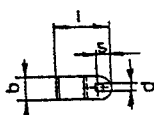
13.201.xx



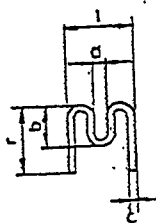
13.198.xx



13.202.xx



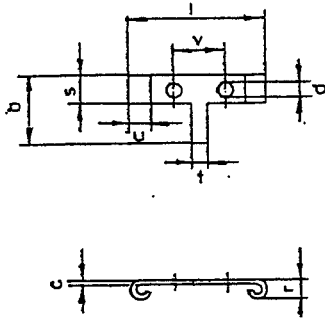
13.199.xx



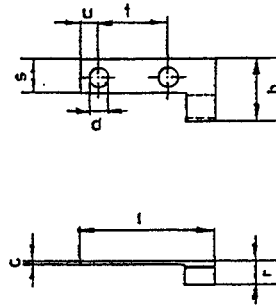
13.203.xx

MEGA

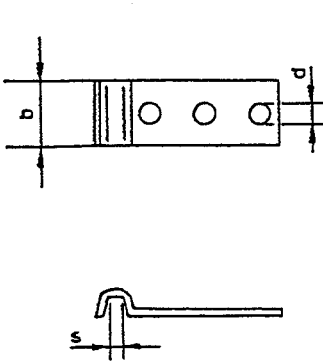
Führungsteller - Terminals - Spezialarmaturen



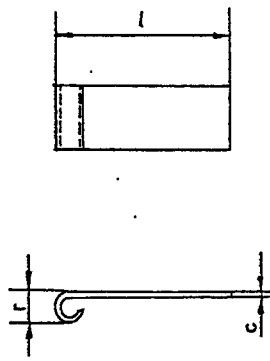
13.204.xx



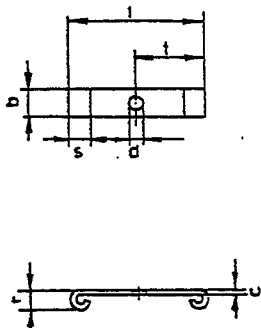
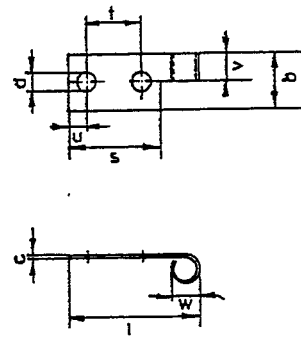
13.208.xx



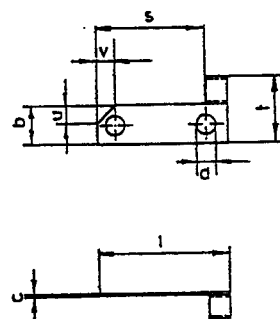
13.205.xx



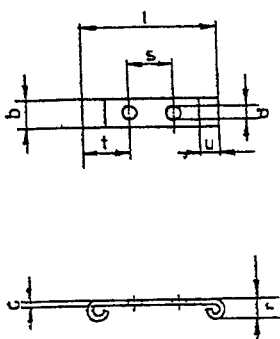
13.209.xx



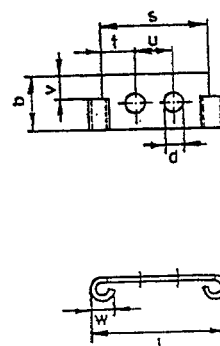
13.206.xx



13.210.xx



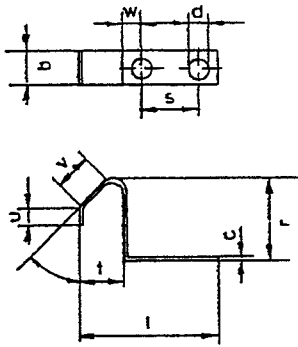
13.207.xx



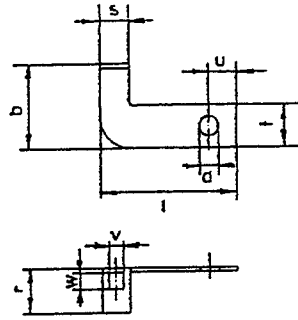
13.211.xx

MEGA

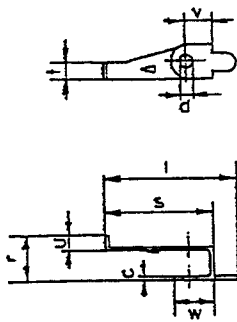
Führungsteller - Terminals - Spezialarmaturen



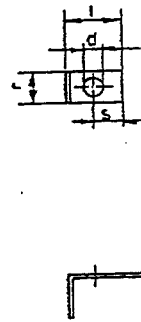
13.212.xx



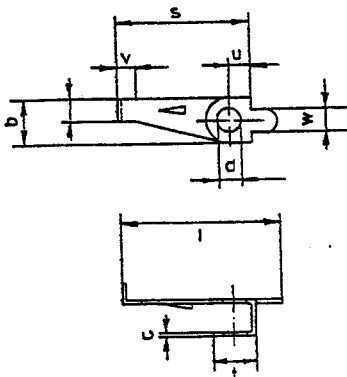
13.216.xx



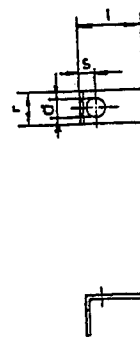
13.213.xx



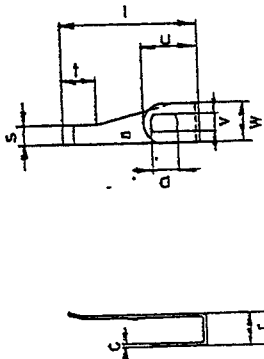
13.217.xx



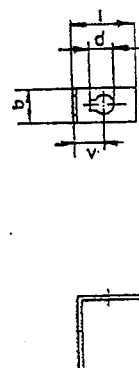
13.214.xx



13.218.xx



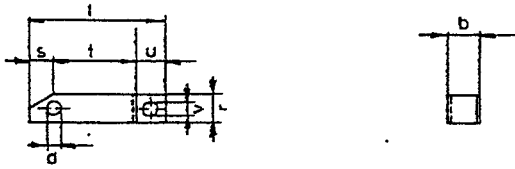
13.215.xx



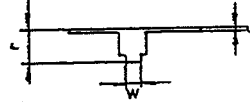
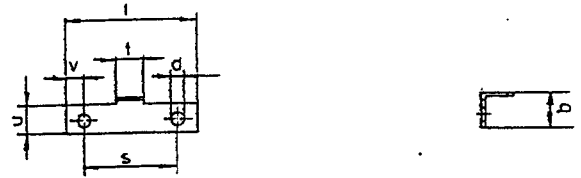
13.219.xx

MEGA

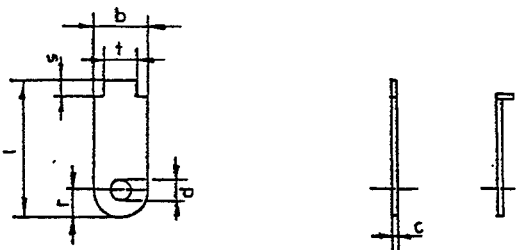
Führungsteller - Terminals - Spezialarmaturen



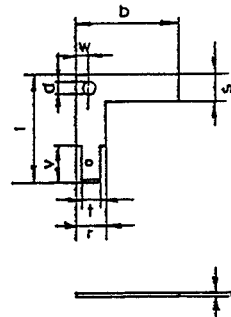
13.220.xx



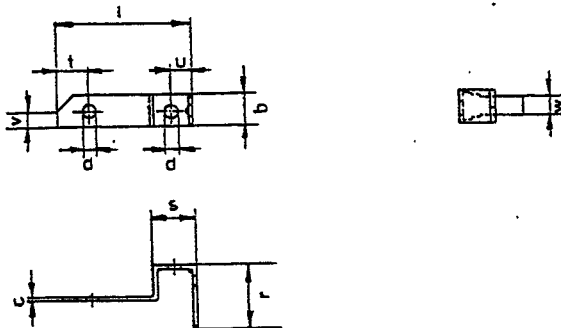
13.224.xx



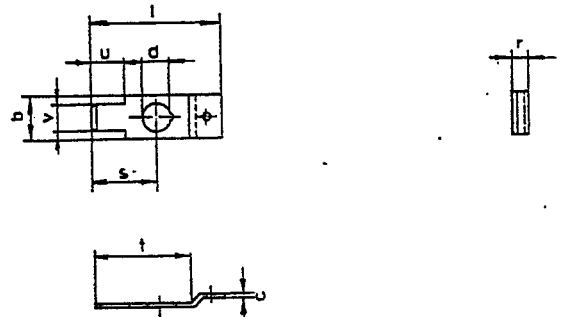
13.221.xx



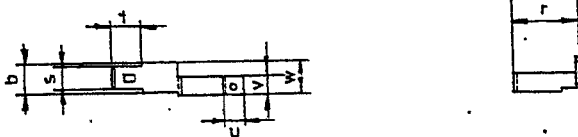
13.225.xx



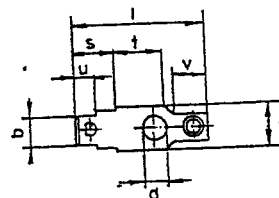
13.222.xx



13.226.xx



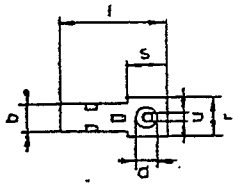
13.223.xx



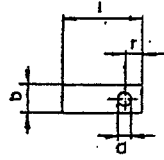
13.227.xx

MEGA

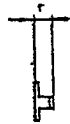
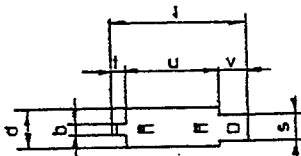
Führungsteller - Terminals - Spezialarmaturen



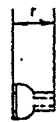
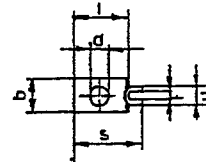
13.228.xx



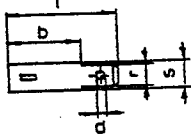
13.232.xx



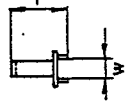
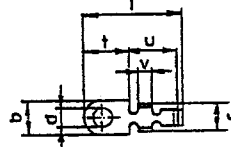
13.229.xx



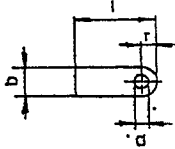
13.233.xx



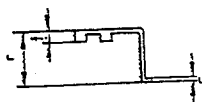
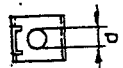
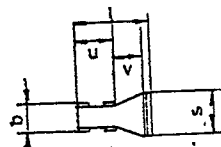
13.230.xx



13.234.xx



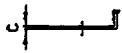
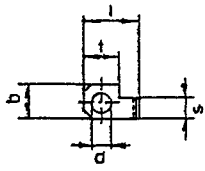
13.231.xx



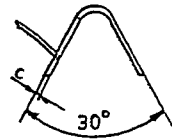
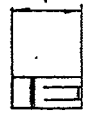
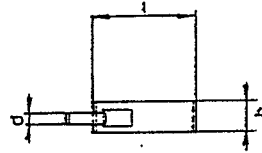
13.235.xx

MEGA

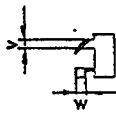
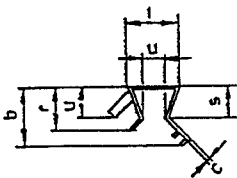
Führungsteller - Terminals - Spezialarmaturen



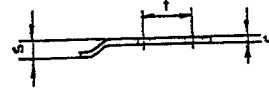
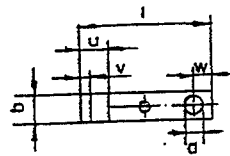
13.236.xx



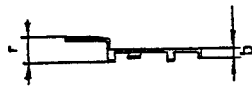
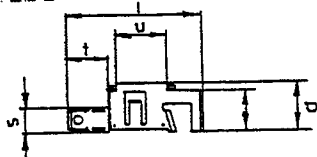
13.240.xx



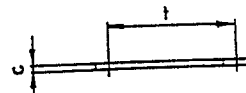
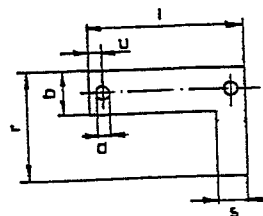
13.237.xx



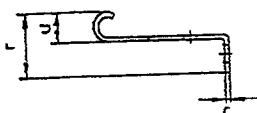
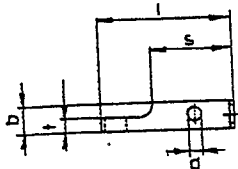
13.241.xx



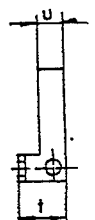
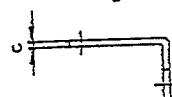
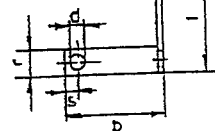
13.238.xx



13.242.xx



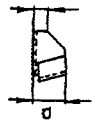
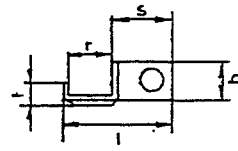
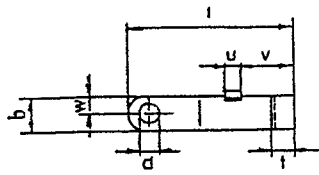
13.239.xx



13.243.xx

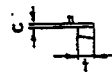
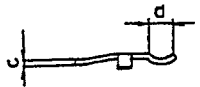
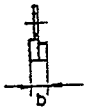
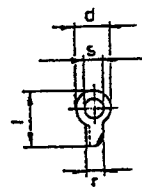
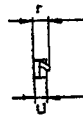
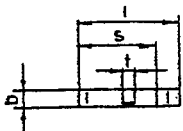
MEGA

Führungsteller - Terminals - Spezialarmaturen



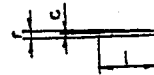
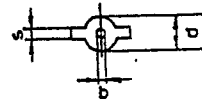
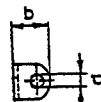
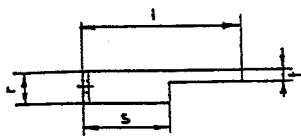
13.244.xx

13.248.xx



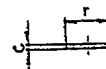
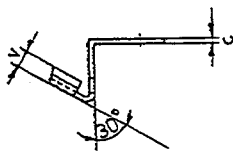
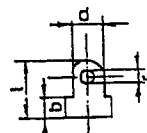
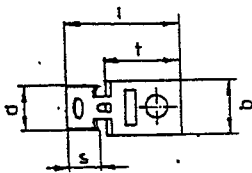
13.245.xx

13.249.xx



13.246.xx

13.250.xx

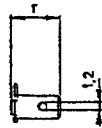
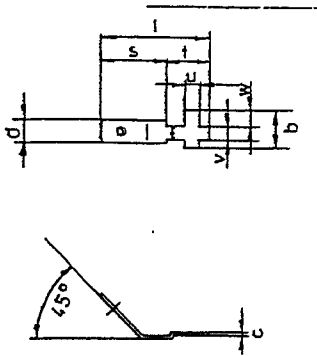


13.247.xx

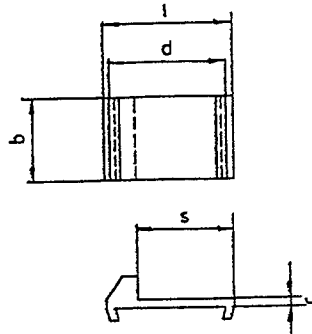
13.251.xx

MEGA

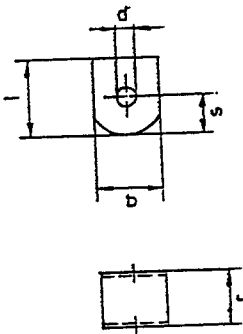
Führungsteller - Terminals - Spezialarmaturen



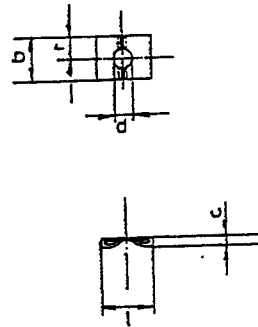
13.252.xx



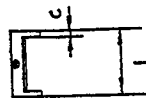
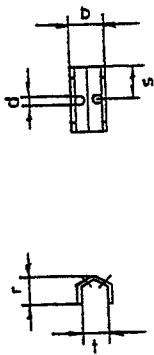
13.256.xx



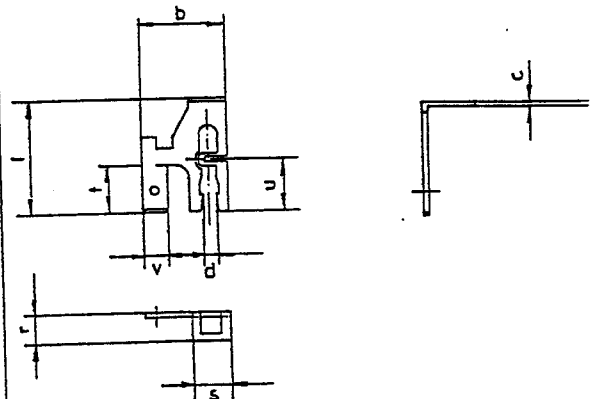
13.253.xx



13.257.xx



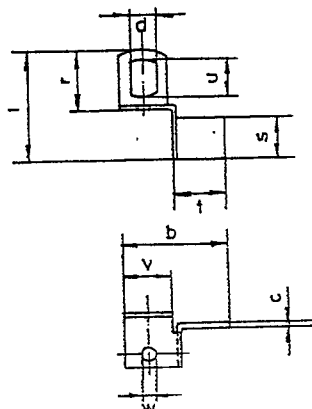
13.254.xx



13.258.xx



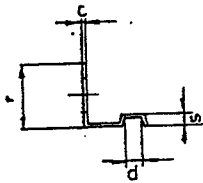
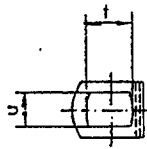
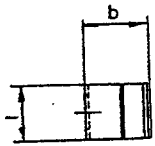
13.255.xx



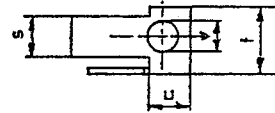
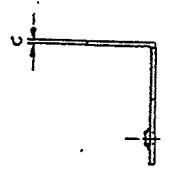
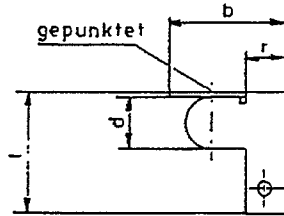
13.259.xx

MEGA

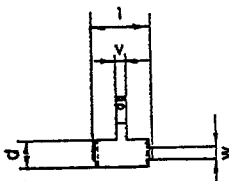
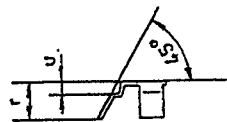
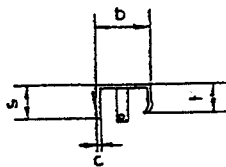
Führungsteller - Terminals - Spezialarmaturen



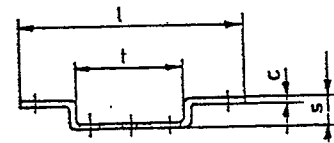
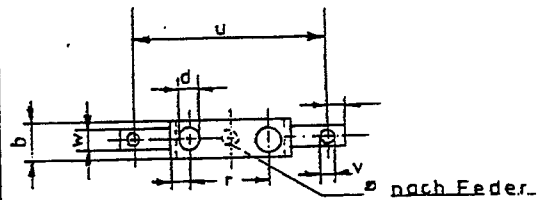
13.260.xx



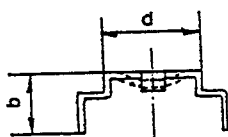
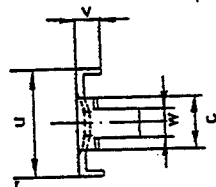
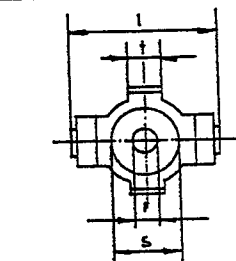
13.264.xx



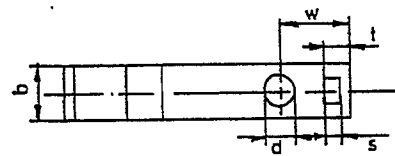
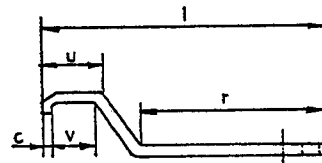
13.261.xx



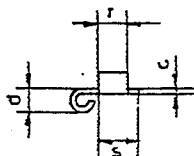
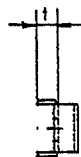
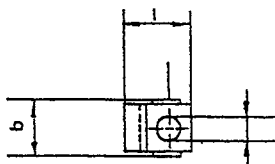
13.265.xx



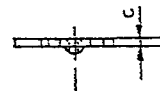
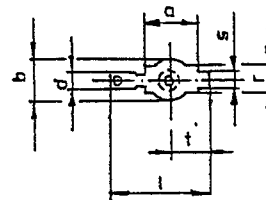
13.262.xx



13.266.xx



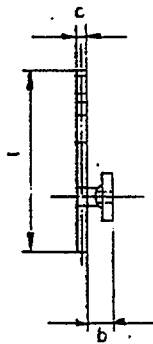
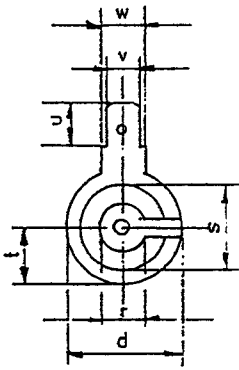
13.263.xx



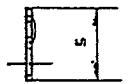
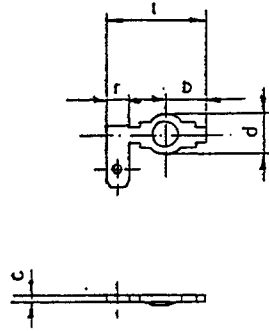
13.267.xx

MEGA

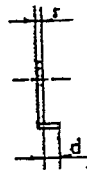
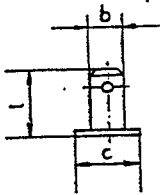
Führungsteller - Terminals - Spezialarmaturen



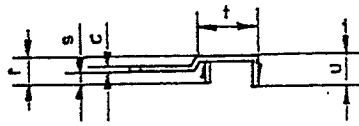
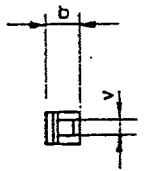
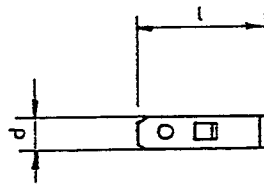
13.268.xx



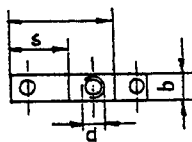
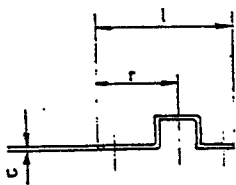
13.272.xx



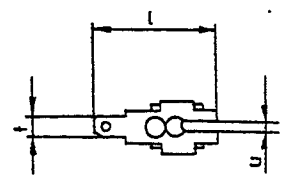
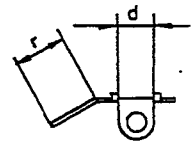
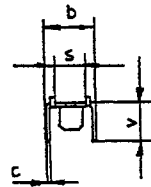
13.269.xx



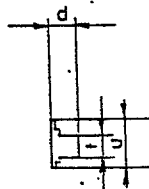
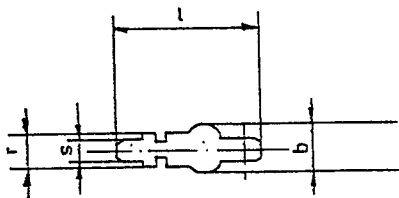
13.273.xx



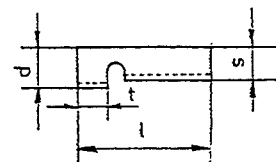
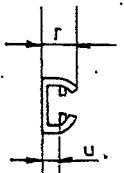
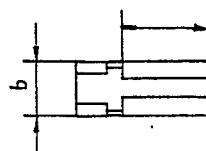
13.270.xx



13.274.xx



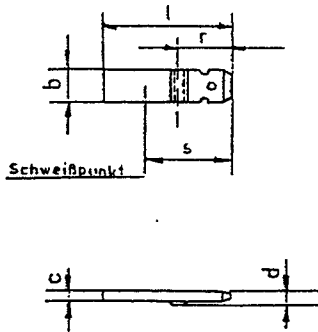
13.271.xx



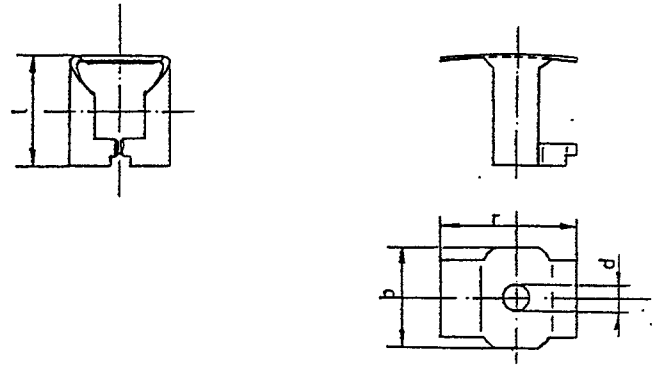
13.275.xx

MEGA

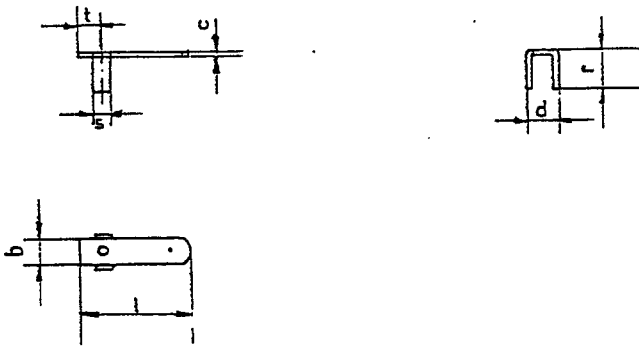
Führungsteller - Terminals - Spezialarmaturen



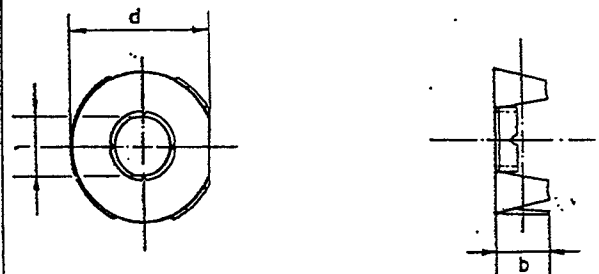
13.276.xx



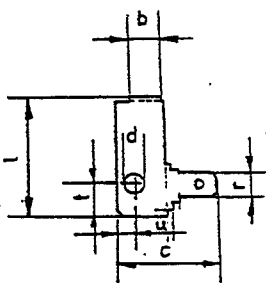
13.280.xx



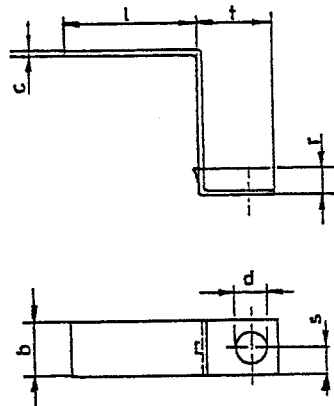
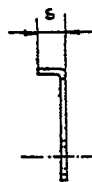
13.277.xx



13.281.xx

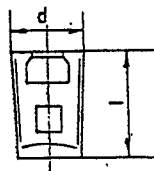
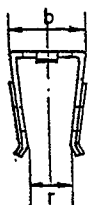


13.278.xx

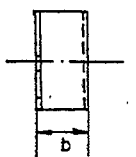
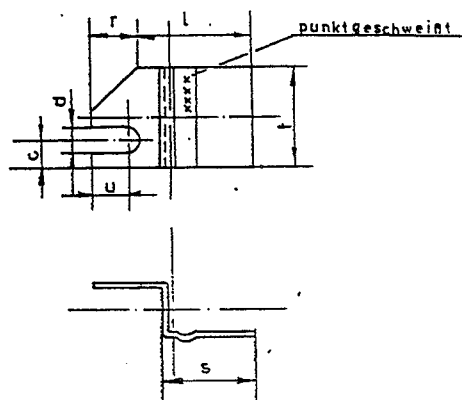


M₆

13.282.xx



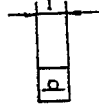
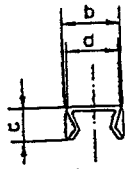
13.279.xx



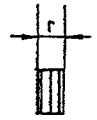
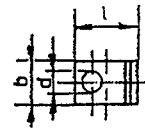
13.283.xx

MEGA

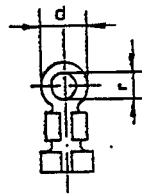
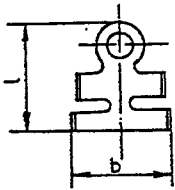
Führungsteller - Terminals - Spezialarmaturen



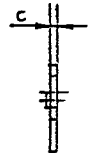
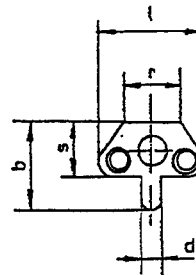
13.284.xx



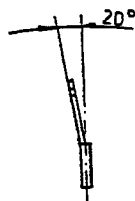
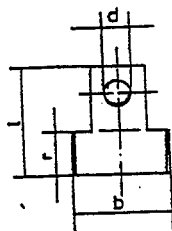
13.288.xx



13.285.xx

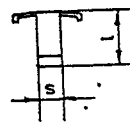
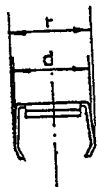


13.289.xx

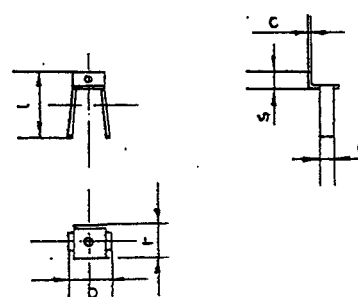


13.286.xx

13.290.xx



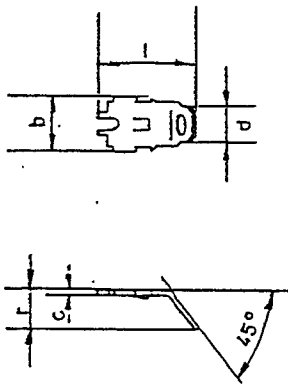
13.287.xx



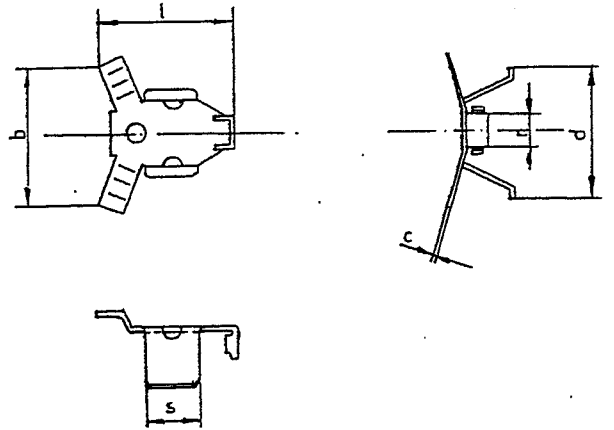
13.291.xx

MEGA

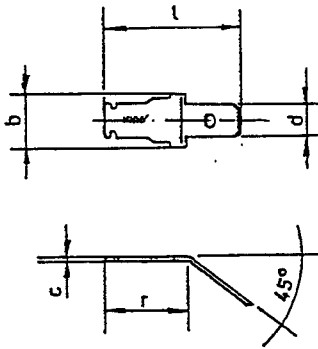
Führungsteller - Terminals - Spezialarmaturen



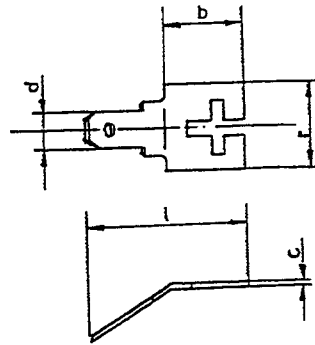
13.292.xx



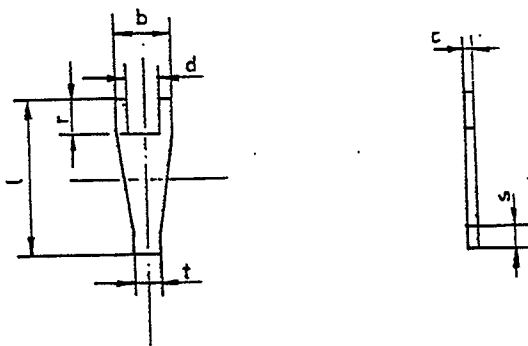
13.296.xx



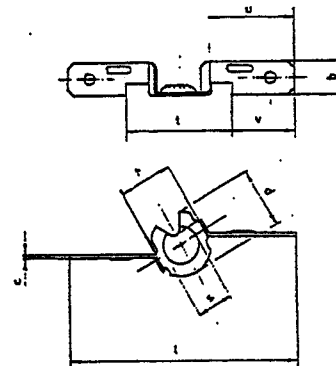
13.293.xx



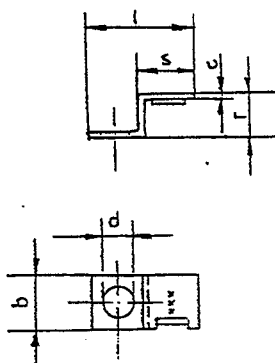
13.297.xx



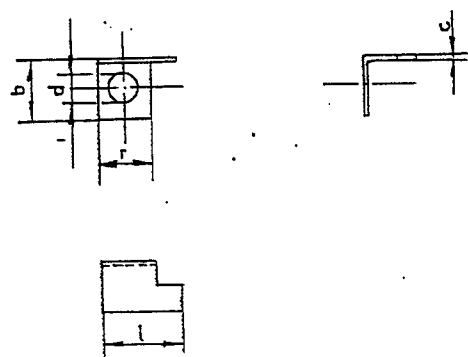
13.294.xx



13.298.xx



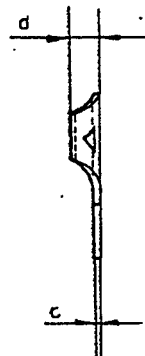
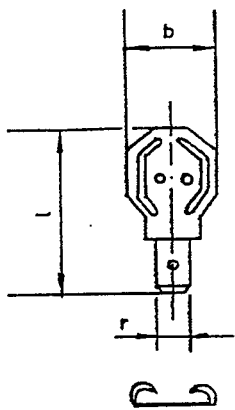
13.295.xx



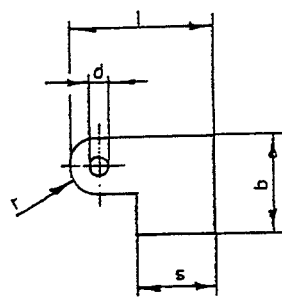
13.299.xx

MEGA

Führungsteller - Terminals - Spezialarmaturen

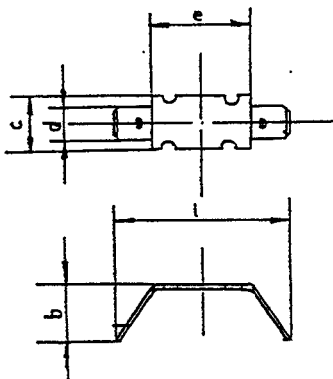


13.300.xx

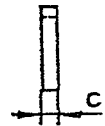
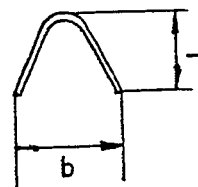


Materialdicke = c

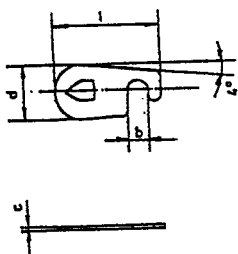
13.304.xx



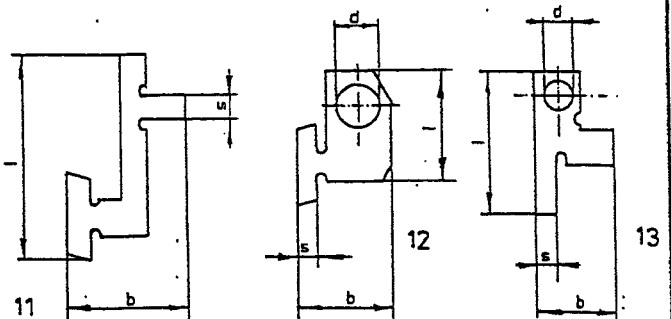
13.301.xx



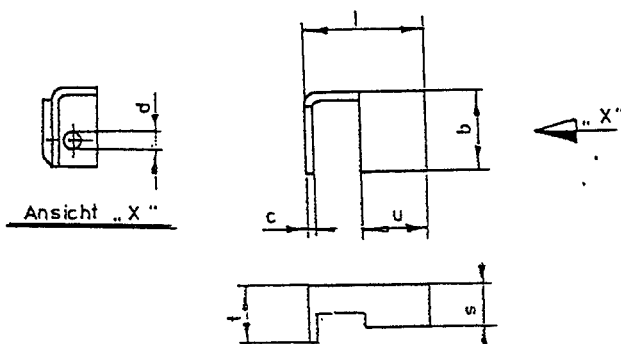
13.305.xx



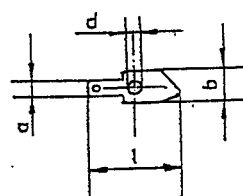
13.302.xx



13.306.xx



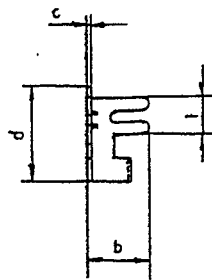
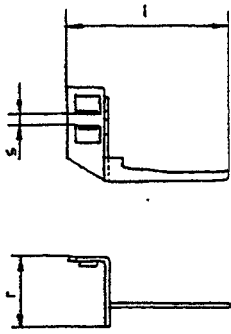
13.303.xx



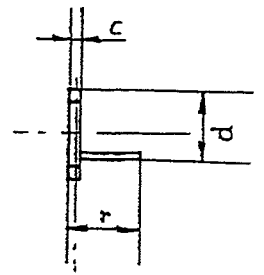
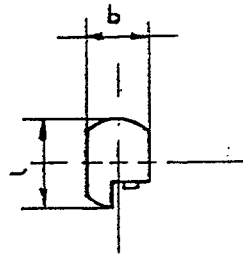
13.307.xx

MEGA

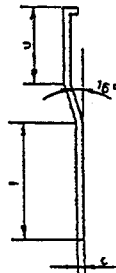
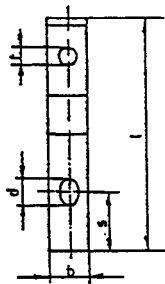
Führungsteller - Terminals - Spezialarmaturen



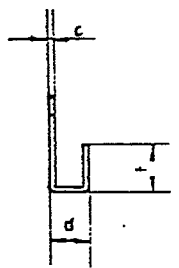
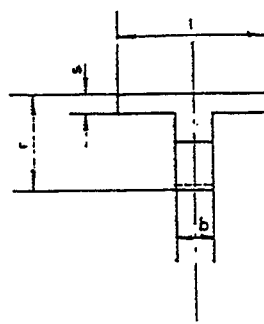
13.316.xx



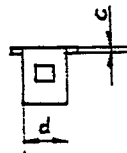
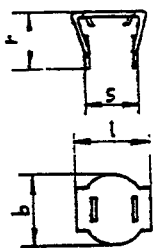
13.320.xx



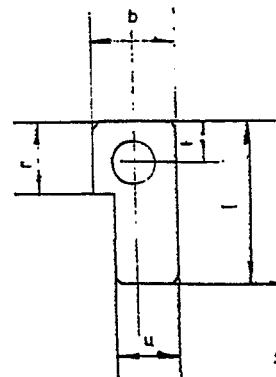
13.317.xx



13.321.xx

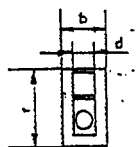
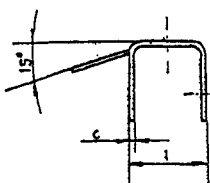


13.318.xx

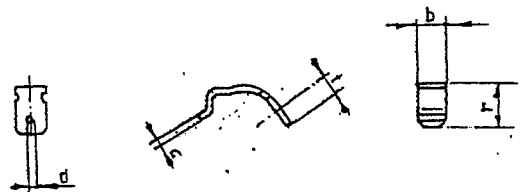


s = 1mm

13.322.xx



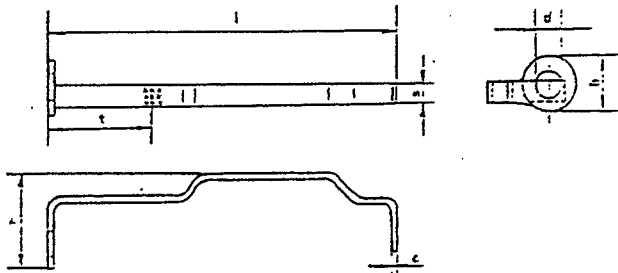
13.319.xx



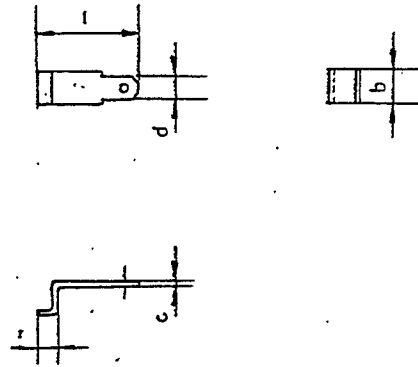
13.323.xx

MEGA

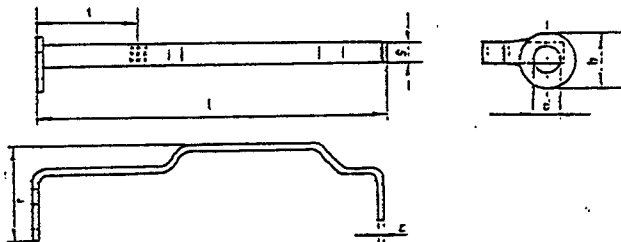
Führungsteller - Terminals - Spezialarmaturen



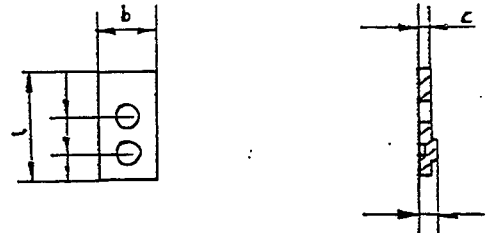
13.308.xx



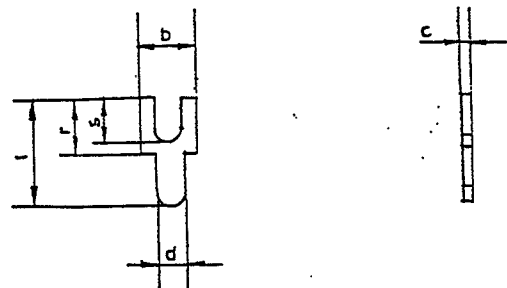
13.312.xx



13.309.xx

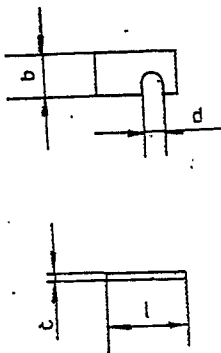


13.313.xx

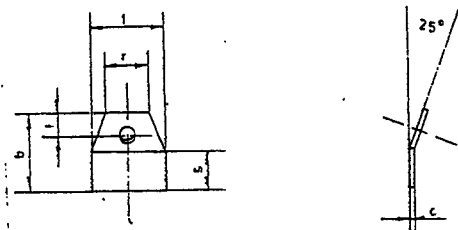


13.310.xx

13.314.xx



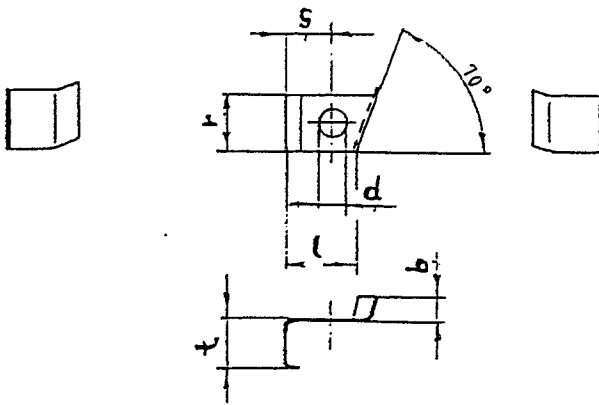
13.311.xx



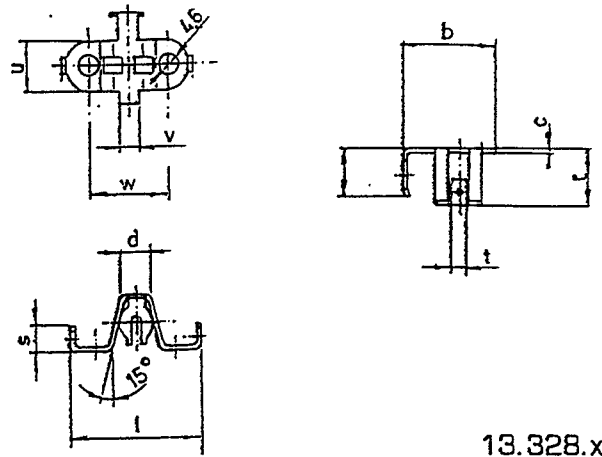
13.315.xx

MEGA

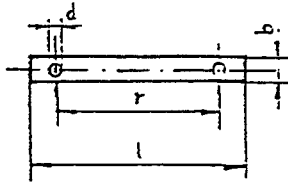
Führungsteller - Terminals - Spezialarmaturen



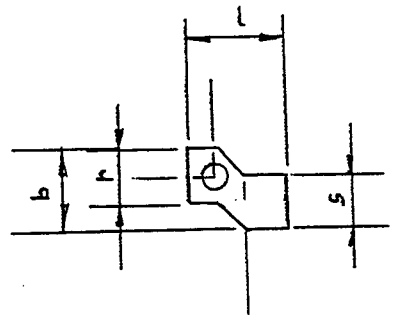
13.324.xx



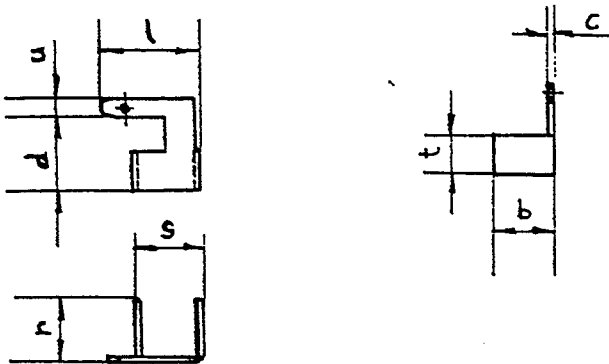
13.328.xx



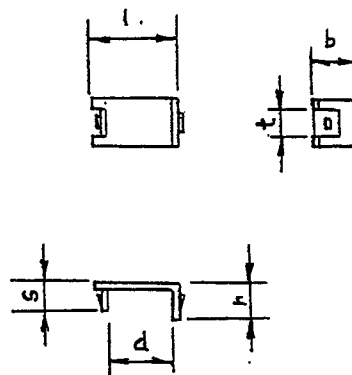
13.325.xx



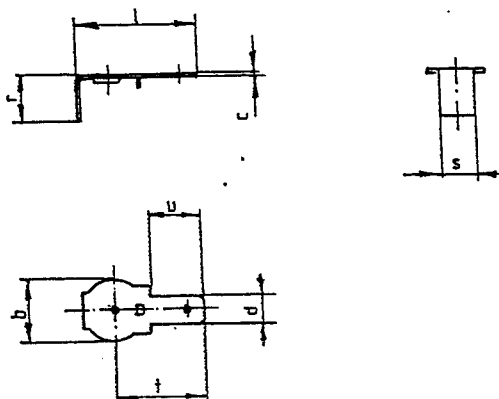
13.329.xx



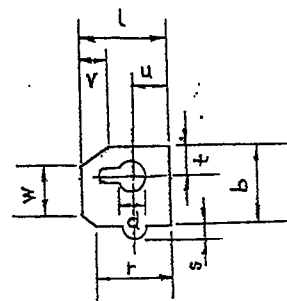
13.326.xx



13.330.xx



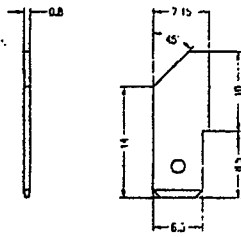
13.327.xx



13.331.xx

MEGA

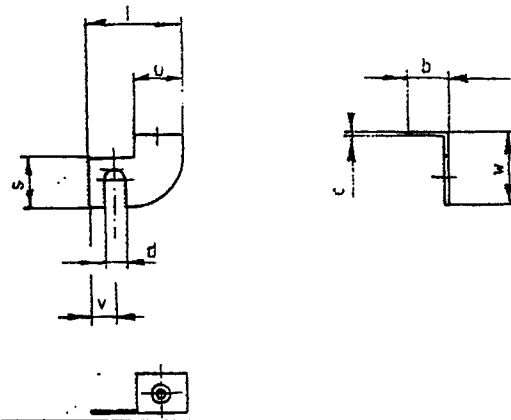
Führungsteller - Terminals - Spezialarmaturen



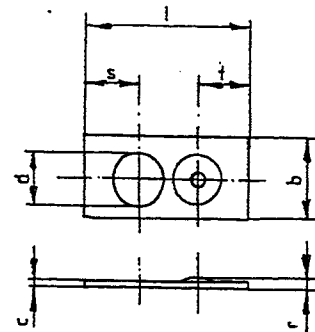
Ausführung im Steckbereich nach
DIN 45 744 Form A

13.332.xx

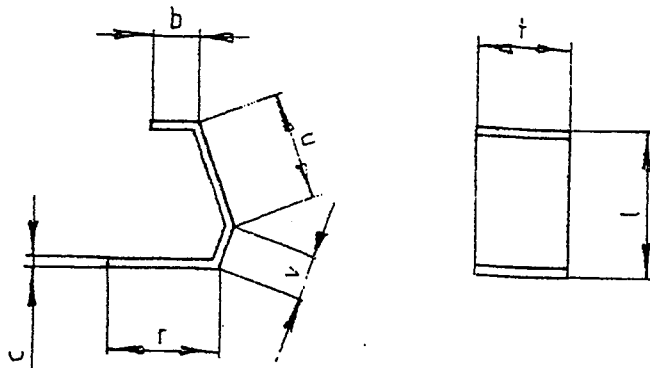
13.336.xx



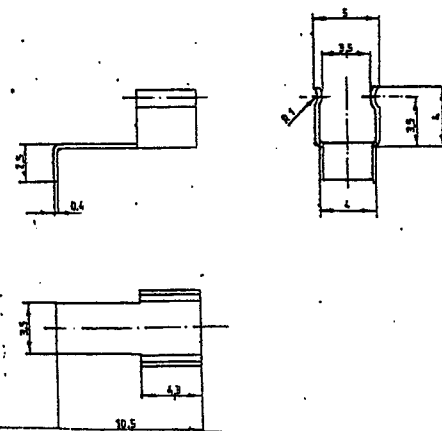
13.333.xx



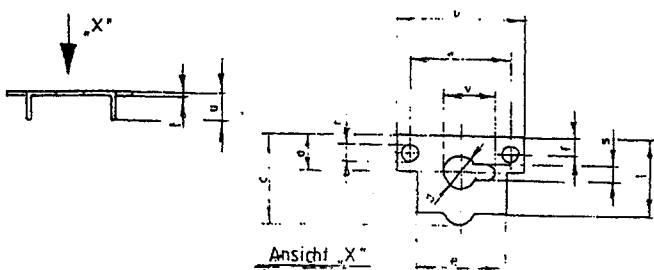
13.337.xx



13.334.xx

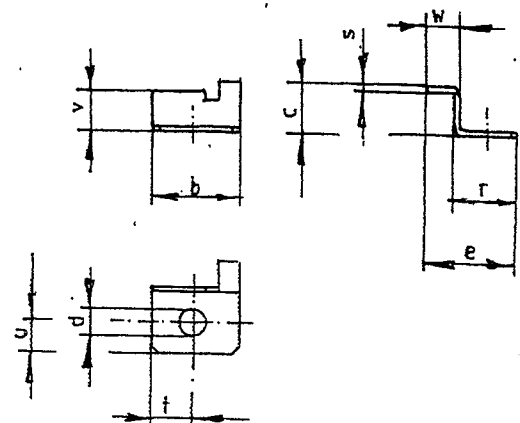


13.338.xx



Ansicht „X“

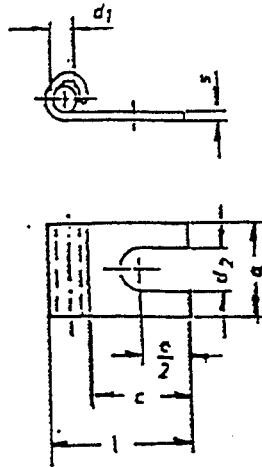
13.335.xx



13.339.xx

Fahnenschuh

13.27.xx
13.721.xx



a	d 2	c	s	d 1	1	°/2	Nenngröße nach DIN 46224	Artikel Nr.	
								alt	neu
6	3,2	8	0,6	1,7			C3 + 1,7		
7	3,2	8	0,75	1,7			C3 + 1,7	13.27.09	
8	4,3	9	0,6	2,6			C4 + 2,6	13.27.30	13.721.12
10	4,3	12	1	3,3			C4 + 3,3	13.27.15	13.721.13
10	5,3	12	1	3,3			C5 + 3,3	13.27.31	13.721.16
12	5,3	14	1	2,6			C5 + 2,6	13.27.21	13.721.11
12	6,4	14	1	2,6			C6 + 2,6	13.27.32	13.721.15
12	5,3	14	1	4,3			C5 + 4,3	13.27.23	
12	6,4	14	1	4,3			C6 + 4,3	13.27.23	
14	6,4	16	1	2,6			C6 + 2,6	13.27.26	
14	6,4	16	1	3,3			C6 + 3,3	13.27.27	
14	6,4	16	1	4,3			C6 + 4,3	13.27.28	
14	6,4	16	1	4,9			C6 + 4,9	13.27.29	



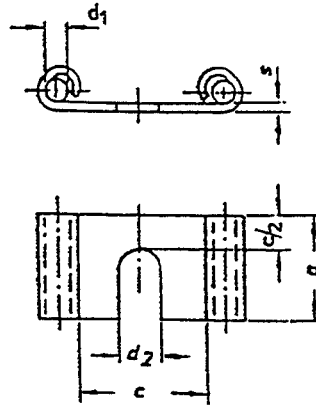
Schmidhammer Elektrokohle GmbH

D-91126 Schwabach/Nürnberg
Walpersdorfer Str. 33-39 Tel. 09122-1806-0
<http://www.schmidhammer-elektrokohle.de>

Fax 09122-1806-60
e-mail: mega@schmidhammer-elektrokohle.de

Doppelfahrscheinuh

13.52.xx
13.717.xx



a	d 2	c	s	d 1	l	e/2	Nenngröße nach DIN 46224	Artikel Nr.	
								alt	neu
14	6,4	16	1	2,6			C6 + 2,6	13.52.01	13.717.01
14	6,4	16	1	3,3			C6 + 3,3	13.52.02	13.717.02
14	6,4	16	1	4,3			C6 + 4,3	13.52.03	13.717.03
14	6,4	16	1	4,9			C6 + 4,9	13.52.04	13.717.04

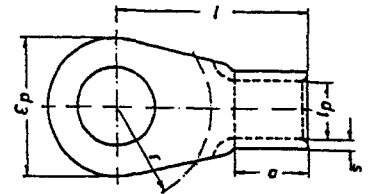
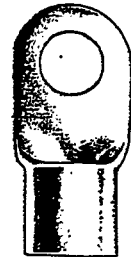


Schmidhammer Elektrokohle GmbH

D-91126 Schwabach/Nürnberg
 Walpersdorfer Str. 33-39 Tel. 09122-1806-0 Fax 09122-1806-60
<http://www.schmidhammer-elektrokohle.de> e-mail: mega@schmidhammer-elektrokohle.de

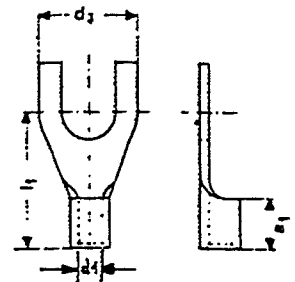
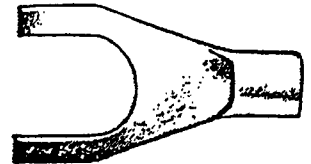
Quetschkabelschuh Ringform

Querschnitt mm ²	Bolzen Ø	DIN 46234	d1	d3	l	a	r
0,25-1,5	2,6	2,5-1	1,6	6	11	5	4,5
0,25-1,5	1,5	3	1,6	6	11	5	4,5
0,25-1,5	3	-	1,6	6,5	8	4	3,5
0,25-1,5	3,5	3,5-1	1,6	6	11	5	4,5
0,25-1,5	3,5	-	1,6	6,5	8	4	3,5
0,25-1,5	4	-	1,6	6,5	8	4	3,5
0,25-1,5	4	-	1,6	7	11	5	5,5
0,25-1,5	4	4-1	1,6	8	12	5	6
0,25-1,5	5	-	1,6	8	12	5	6
0,25-1,5	5	5-1	1,6	10	13	5	6,5
0,25-1,5	6	-	1,6	10	13	5	6,5
0,25-1,5	6	-	1,6	12	17	5	10
0,25-1,5	8	-	1,6	12	17	5	10
1,5-2,5	3	3-2,5	2,3	6	11	5	4,5
1,5-2,5	3,5	3,5-2,5	2,3	6	11	5	4,5
1,5-2,5	3,5	-	2,3	6,8	11	5	4,5
1,5-2,5	4	-	2,3	6,8	11	5	4,5
1,5-2,5	4	4-2,5	2,3	8	12	5	6
1,5-2,5	5	-	2,3	8	12	5	6
1,5-2,5	5	5-2,5	2,3	10	14	5	6,5
1,5-2,5	6	-	2,3	10	14	5	6,5
1,5-2,5	6	6-2,5	2,3	11	16	5	7,5
1,5-2,5	8	8-2,5	2,3	14	17	5	10
1,5-2,5	10	-	2,3	18	20	5	12
1,5-2,5	12	-	2,3	18	20	5	12
2,6-6	4	4-6	3,6	8	14	6	6
2,6-6	5	5-6	3,6	10	15	6	6,5
2,6-6	6	6-6	3,6	11	16	6	7,5
2,6-6	8	8-6	3,6	14	19	6	10
2,6-6	10	10-6	3,6	18	21	6	12
2,6-6	12	-	3,6	18	21	6	12
6,1-10	4	-	4,5	10	16	8	6,5
6,1-10	5	5-10	4,5	10	16	8	6,5
6,1-10	6	6-10	4,5	11	17	8	7,5
6,1-10	8	8-10	4,5	14	20	8	10
6,1-10	10	10-10	4,5	18	21	8	12
6,1-10	12	12-10	4,5	22	23	8	13
10,1-16	5	5-16	5,8	11	20	10	7,5
10,1-16	6	6-16	5,8	11	20	10	7,5
10,1-16	8	8-16	5,8	14	22	10	10
10,1-16	10	10-16	5,8	18	24	10	12
10,1-16	12	12-16	5,8	22	26	10	13
16,1-25	5	5-25	7,5	12	25	11	7,5
16,1-25	6	6-25	7,5	12	25	11	7,5
16,1-25	8	8-25	7,5	16	25	11	10
16,1-25	10	10-25	7,5	18	26	11	12
16,1-25	12	12-25	7,5	22	31	11	13
16,1-25	16	16-25	7,5	28	35	11	16
26-35	6	6-35	9	16	26	12	10
26-35	8	8-35	9	16	26	12	10
26-35	10	10-35	9	18	27	12	12
26-35	12	12-35	9	22	31	12	13



Quetschkabelschuh Gabelform

Querschnitt mm ²	Bolzen Ø	Maße mm			
		d1	d3	l1	a1
0,1-0,5	3	1	5	10	4
0,25-1,5	3	1,6	6	11	5
0,25-1,5	3	1,6	6,5	8	5
0,25-1,5	3,5	1,6	6	11	5
0,25-1,5	3,5	1,6	6,8	8	5
0,25-1,5	4	1,6	6,8	12	5
0,25-1,5	4	1,6	8	12	5
0,25-1,5	5	1,6	10	13	5
0,25-1,5	6	1,6	11	15	5
1,5-2,5	3	2,3	6	11	5
1,5-2,5	3,5	2,3	6,8	11	5
1,5-2,5	4	2,3	6,8	11	5
1,5-2,5	4	2,3	8	12	5
1,5-2,5	5	2,3	10	14	5
1,5-2,5	6	2,3	11	16	5
2,6-6	4	3,6	8	11	6
2,6-6	5	3,6	10	15	6
2,6-6	6	3,6	11	16	6
2,6-6	8	3,6	14	19	6
6,1-10	5	4,5	10	16	8
6,1-10	6	4,5	11	17	8
10,1-16	5	5,8	11	20	10
10,1-16	6	5,8	11	20	10



Endstücke

TEILE_NR	INDEX	b	c	i	d	r	s	t	u	v	w	Form	alte Teile-Nr.
13.100.011	01	11	4,7	2,6	14	1,5							
13.101.011	01	10	0,4	2,3	4,5								
13.101.012	01	11,5	0,8	2,4	5,2								
13.102.011	01	15	0,5	1,7	8,5	11	4,8	9,0					
13.104.011	01	8	0,5	1,4	5,6								
13.104.012	02	8,0	0,3		5,0			4,6					
13.105.011	01/02	10	1,0	3,5	10		4,0						
13.105.012	01	10	5,0	24	3,5	7,5	9,5	11	6,5				
13.106.011	01	10	0,5	12,5	1,2	22,5	12,5	8,5	14	7,5	4,8		
13.107.011	01/0	1,0	0,5	21,5	2,0	5,0	2,5	13,5	1,3	2,6			
13.108.011	01/02	14,5	1	24	2	11,5	7	12	4,5	5,5			
13.108.012	01/02	12,8	1	24	2	11,4	7	12	4,5	5,5			
13.108.013	01/02	11	1	18	4,5	15	5	12	3	5			
13.109.011	01/02	10,5	1	21	1,4	13	6	10,8	10	11	4,2		
13.110.011	01/02	4,0 di	0,3		1,0 d								
13.110.012	01/02	4,5 di	0,3		1,2 d		3,4 d						
13.110.013	01/02	5,0	0,5		1,4								
13.110.014	01/02	5,9 di	0,5		1,3 d								
13.110.015	01/02	6,5 di	0,5		1,1 d								
13.110.016	01/02	7,5 di	0,5		1,6 d								
13.110.018	01/02	9,0 di	0,8		1,5 d								
13.110.019	01/02	10,0	1,0		1,6 d								
13.110.020	01/02	11,0	1,0		1,6 d								
13.110.021	01/02	11,5	1,0		2,0								
13.110.022	01/02	13,0	0,8		1,5 d								
13.110.023	01/02	14,0	0,8		1,7 d								
13.110.024	01/02	15,0	0,8		1,8 d								
13.110.026	01/02	5,5 di	0,5		1,6 d								
13.110.029	01/02	17,0	0,5										
13.110.030	01/02	18,0	0,5	4,5	1,1 d	1,9 di							
13.110.032	01/02	21,0	0,5	5,0	1,8 d	2,1 di							
13.110.033	02	9,5 di	0,4		1,5 d								
13.110.034	02	8,0 di	0,8										
13.110.038	01/02	8,0 di	0,2										
13.110.039	02	4,8 di	0,4										
13.110.040	01/02	24,0	1,0	8,0	3,0 d								
13.110.041	01/02	7,0 di	0,6		1,2 d								
13.110.042	01/02	4,8 di	0,5		1,0 d								
13.110.043	01/02	8,0 di	0,6		1,5 d								
13.110.044	01/02	8,5 di	0,6		1,2 d								
13.110.045	02	14,0	0,5	12,5			2,8		10,0				

Endstücke

TEILE_NR	INDEX	b	c	l	d	r	s	t	u	v	w	Form	alte Teile-Nr.
13.110.046	02	9,5	0,5	8			1,7		5,0				
13.110.047	02	12,0	0,5	10,5									
13.110.048	02	5,5	1										
13.110.049	02	14	0,8										
13.110.050	01	3,8	0,4		1,2								
13.110.051	02	5,5	0,5										
13.110.052	01	10	0,8		3								
13.110.053	01	2,54	0,3		1,1								
13.111.011	01	14,0	0,5	1,5	1,1	1,9							
13.111.012	01	22,0	0,8	4,0	1,9	2,7							
13.112.011	01	12,0	1,0	18	1,6	4,3	3,4	5,0					
13.112.012	01	8,0	0,5	11,5	1,4			4,0					
13.113.011	01	13	0,4	6		1,4		1,5					
13.113.012	01	21,0	0,5	8,5		4,5		1,5					
13.113.013	02	21,0	0,5	11,5		6,0		1,5					
13.114.012	01	9,2	0,6	12,8	1,7	2,4	3,6						
13.114.013	01	11,0	0,6	14,5	1,8	2,0	4,3						
13.114.014	01	11,0	0,8	12,6	1,6	2,6	7,7						
13.114.015	01	12,7	0,8	14,0	1,6	2,6	10,0						
13.114.016	01	16,0	0,8	21,0	2,4	2,6	8,0						
13.114.018	01	13,5	0,6	21,0	2,1	2,6	5,8						
13.115.011	01	6,9	0,8	7,7	0,8	1,3	1,1	1,6	4,0				
13.116.011	01	5,9	0,5	7,3	0,8	1,5							
13.116.012	01	10,0	0,8	10,0	1,3	1,8							
13.116.013	01	7,7	0,8	10,0	1,0	1,8							
13.116.014	01	5,9	0,6	7,9	1,0	1,5							
13.116.015	01	5,0	0,5	13	1,0	1,5	6,5						
13.116.016	01	6,0	0,6	6,0	1,0	1,1							
13.117.011	01	8,7	1,0	12,2	3,9	1,8	3,3	9,7					
13.118.011	01	5,9	0,4	5,9	1,1	10,0	0,9	8,2	4,9				
13.119.011	01	2,7	0,4	8,5	1,0	9,6		11,9					
13.120.011	01/02	5,5	0,4	9,1	1,5	8,8		10,0				A	09-20-11
13.120.012	01	2,8	0,3	3,9	0,9	6,1		5,9				A	09-20-12
13.120.013	01/02	3,9	0,4	5,0	1,3	6,7		6,4				A	09-20-13
13.120.014	01/02	3,9	0,5	6,0	1,1	6,5		7,4				A	09-20-14
13.120.014-1	01/02	4,9	0,4	6,4	1,4	6,5		7,4				A	
13.120.015	01/02	3,6	0,4	5,9	1,1	5,6		7,9				A	09-20-15
13.120.015-1	01/02	3,6	0,4	6,8	1,1	5,2		7,9				A	
13.120.016	01/02	1,8	0,6	6,4	1,0	5,6		9,3				A	09-20-16
13.120.017	01/02	3,7	0,3	3,9	1,0	4,9	1,3	5,9				C	09-20-17
13.120.018	01/02	4,6	0,3	4,8	1,2	6,3	1,5	8,0				C	09-20-18

Endstücke

TEILE_NR	INDEX	b	c	l	d	r	s	t	u	v	w	Form	alte Teile-Nr.
13.120.019	01/02	2,9	0,6	6,8	1,0	7,9		10,0				A	09-20-19
13.120.020	01/02	5,5	0,5	8,6	1,2	9,7		12				A	
13.120.021	01/02	5,0	0,5	6,8	1,6	7,8		10,5				A	09-20-21
13.120.022	01/02	5,1	0,4	8,1	1,5	7,2	1,3	10,0				A	09-20-22
13.120.022-1	01/02	5,0	0,4	8,0	1,7	7,3	1,4	9,8				C	
13.120.023	01/02	6,2	0,4	9,8	1,8	7,5	1,6	11				C	09-20-23
13.120.025	01/02	4,6	0,4	10,0	1,3	8,2	1,6	11,0				C	09-20-25
13.120.025-1	01/02	4,6	0,4	10,0	1,3	8,2	1,6	11,0				C	
13.120.026	01/02	5,9	0,4	10,2	2,1	7,5		11				A	09-20-26
13.120.027	01/02	4,9	0,5	12,5	1,5	7,0	1,5	13				C	09-20-27
13.120.028	01/02	3,9	0,4	8,9	1,7	12		10,8				A	09-20-28
13.120.029	01/02	5,3	0,5	6,8	1,1	11,6		8,7				A	09-20-29
13.120.030	01/02	6,5	0,8	11,8	1,9	12,6		14,9				A	09-20-30
13.120.031													
13.120.032	01/02	4,5	0,8	15,4	2,0	8,6		16,0				A	
13.120.033	01/02	4,6	0,3	7,8	1,4	8,7		12,3				A	09-20-33
13.120.034	01/02	6,0	0,5	10,9	1,7	7,4		9,6				D	09-20-34
13.120.035	02	2,4	0,4	7,5		4,0		5,9				D	
13.120.036	01/02	7,6	0,3	12,5	1,7	8,6	1,6	13,1				C	09-20-36
13.120.037	01/02	3,1	0,4	5,4	1,2	5,3		7,7				B	
13.120.038	01/02	6,0	0,4	12,5	1,6	8,3	1,4	13,2				C	09-20-38
13.120.039	01/02	4,9	0,4	6,4	1,2	7,3	1,4	8,1				C	09-20-39
13.120.040	01/02	3,6	0,3	6,2	0,7	6,5	1,2	8,0				C	09-20-40
13.120.042	01/02	3,0	0,4	5,4	1,1	5,2						A	09-20-42
13.120.043	01/02	3,8	0,6	8,0	1,6	12,2		10,8				A	09-20-43
13.120.044	01/02	4,5	0,4	6,5	1,0	6,7		8,3				A	09-20-44
13.120.045	01/02	4,8	0,4	6,8	1,8	6,8		9,4				A	09-20-45
13.120.046													
13.120.047													
13.120.048	01/02	5,9	0,8	17,2	2,3	13,4		2,9				A	09-20-49
13.120.049													
13.120.050	01/02	7,0	0,8	10,0	1,2	10,9		11,1				D	09-20-50
13.120.051	01/02	5,4	0,6	14,0	1,5	13,2		10,8				D	09-20-51
13.120.052	01/02	5,0	0,5	7,7	1,4	10,5		9,9				A	09-20-52
13.120.053	01/02	4,6	0,3	6,5	1,0	10,5		8,5				A	09-20-53
13.120.054	01/02	4,9	0,4	7,8	1,4	7,2		9,9				A	09-20-54
13.120.055													
13.120.056	01/02	5,8	0,5	12,0	1,7	10,0		14,0				A	09-20-55
13.120.056-1	01/02	5,8	0,5	13,0	2,3	10,0		14,0				A	
13.120.056-2	01/02	5,8	0,5	13,0	2,1	9,5		14,0				A	
13.120.057													

Endstücke

TEILE_NR	INDEX	b	c	l	d	r	s	t	u	v	w	Form	alte Teile-Nr.
13.120.058	01/02	6,4	0,4	10,4	2,0	15,8		11,6				A	09-20-58
13.120.059													09-20-59
13.120.060	01/02	6,3	0,6	19,0	2,4	11,8		21,1				A	
13.120.061	01/02	5,9	0,4	12,7	2,6	11,9		14,1				A	
13.120.062													
13.120.063	01/02	4,6	0,4	9,8	1,5	8,0		10,9				A	
13.120.064	01/02	7,8	0,5	9,5	1,4	15,8		10,3				A	
13.120.065													
13.120.066													
13.120.067	01	3,0	0,5	6,5	0,8	5,4		8,4				A	
13.120.068	01/02	6,5	0,5	17	1,4	9,9		18,5				A	
13.120.069													
13.120.070													
13.120.071													
13.120.072	01/02	7,8	0,8	17,7	1,2	4,4		16,0				B	
13.120.073	01/02	2,6	0,5	12,5	1,0	15,6		11,0				B	
13.120.074	01/02	6,1	0,3	6,2	1,4	9,45		8,0				A	
13.120.075	01/02	4,7	0,5	12,7	1,4	15,7		11,0				A	
13.120.076													
13.120.077													
13.120.078													
13.120.079													
13.120.080													
13.120.081													
13.120.082	01/02	5,8	0,3	7,2	1,6	5,2		10,1				A	
13.120.083	01/02	5,9	0,4	8,3		7,8		9,5				A	
13.120.084	01/02	4,5	0,3	5,2	1,0	4,8		5,8				A	
13.120.085	01/02	2,0	0,3	8,2	2,0	4,2		9,5				D	
13.120.086													
13.120.087													
13.120.088													
13.120.089													
13.120.090	01/02	4,6	0,6	7,9	1,1	7,2		9,5				D	
13.120.091	01/02	5,8	0,8	16,0	2,2	10,0		20,0				C	
13.120.092	01/02	4,6	0,4	9,4	1,5	8,0		10,9				A	
13.120.093	01/02	6,0	0,3	10,0	2,0	14,5		11,7				C	
13.120.094	01/02	5,8	0,6	8,8		8,5		11,0				A	
13.120.095	01/02	4,5	0,5	7,5	1,6	8,0		8,8				A	
13.120.096	01/02	4,9	0,5	9,0	1,7	7,8		10,9				A	
13.120.097	02	6,4	0,5	16,0		8,4		12,3				C	
13.120.098	02	8,9	0,5	12,0		9,0		12,0				A	

Endstücke

TEILE_NR	INDEX	b	c	l	d	r	s	t	u	v	w	Form	alte Teile-Nr.
13.120.099	01/02	5,5	0,4	11,6		8,8		10,0				A	
13.120.100	02	4,9	0,5	7,8		7,2		10,0				A	
13.120.101	01/02	6,4	0,5	30,8	3,8	7,9		30,8				B	
13.120.102	01/02	2,3	0,5	6,3	1,2	6,4		8,0				A	
13.120.103	02	6,0	0,4	10,2		7,5		11,0				A	
13.120.104	01/02	2,2	0,4	4,7	1,0	4,0		8,0				A	
13.120.105	02	5,75	0,5	14,0		8,0		13,7				A	
13.120.106	02	10,0	0,7	12,5		9,5		17,0				A	
13.120.107	02	7,8	0,5	11,0		9,6		12,7				A	
13.120.108	02	5,6	0,6	15,5		8,8		15,7				A	
13.120.109	01	2,75	0,3	5,3	1,7	5,4		5,75				A	
13.120.110	02	4,6	0,6	8,0		5,0		7,35				B	
13.120.111	02	4,5	0,5	11,8		10,6	2,5	11,6				C	
13.120.112	02	3	0,5	6,4	1,2	8		8					
13.120.113	01/02	4,5	0,8	15	2	8,6		12,3				A	
13.120.114	01/02	5,0	0,4	8,2		7,5		10,5				A	
13.120.115	01/02	5	0,8	8		7,8		10,5				A	
13.120.116	01	4,9	0,4	6	1,4	4	7,4					A	
13.120.117	02	6,5	0,5	17		8,5		18,5				A	
13.120.118	02	5	0,8	6,5		4		8				A	
13.120.119	02	4,5	0,4	12,1		6,5		14,7					
13.120.120	02	3,8	0,4	7,8		6		10,5					
13.120.121	02	5	0,4	9,7		6,2		13					
13.120.122	01/02	5,8	0,5	11		11	1,9	9,8				C	
13.120.123	02	5	0,5	14		10						A	
13.120.124	02	5	0,5	12		10		14				A	
13.120.125	02	6,5	0,5	16,8		8,5	19						
13.121.011													
13.121.012	01/02	4,0	0,5	8,9	1,0	7,0							
13.121.013	01/02	4,6	0,4	9,5		7,0							13.120.05
13.121.014	01/02	5,9	0,5	12,4	2,2	7,6							13.120.62
13.121.015	01/	4,9	0,5	8,0	0,8	7,8							
13.121.016	02	4,9	0,5	7,7		5,6							
13.121.017	01/02	5,0	0,5	5,9	1,1	8							
13.121.018	01/02	6,0	0,5	11,3	1,3	11,2							
13.121.019	01/02	6,0	0,4	8,7	1,7	11,3							
13.121.020	01/02	5,5	0,5	8,5	1,2	17,0							
13.121.021	02	4,6	0,5	8,2/7		4,0							
13.121.022	01/02	6,3	0,8	13,0	1,4	12,3							
13.121.023	01/02	5,8	0,5	13	2,1	9,3							
13.121.024	01/02	5,0	0,5	9,5	1,8	7,0							

Endstücke

TEILE_NR	INDEX	b	c	l	d	r	s	t	u	v	w	Form	alte Teile-Nr.
13.121.025	01/02	6,3	0,5	12,8		8,5							
13.121.026	02	4,6	0,5	12		6,2							
13.121.027	01/02	5,8	0,4	9,8/1		6,5							
13.121.028	01/02	5,8	0,4	10		7,8							
13.121.029	02	4,9	0,5	8,0	-	7,8							
13.121.30	02	4,3	0,5	6,4		6,2							
13.122.011	01/02	6,3	0,8	9,5	1,4	15,0							
13.123.011	01	5,8	0,5	9,0	1,2	16,7	2,8						
13.123.012	01/02	5,8	0,5	10,8	1,5	13,5	2,2						
13.123.014	01/02	5,4	0,5	9,8	1,5	10,3	3,6						
13.124.011	01/02	7,2	0,8	4,5	1,5	16,0	1,6	6,2					
13.124.012	01/02	9,0	0,8	4,5	1,5	18,0	1,6	6,2	3,0	10,0			
13.124.013													
13.124.014	01/02	11,2	1,0	7,8	5,1	22,5		2,4			5,0		
13.124.015	01/02	10,0	0,5	4,0	1,9	32,6		13,8			7,4		
13.125.011	01/02	5,5	0,6	15,0	2,0	14,0		12					
13.125.012	01/02	6,0	0,4	14,0	2,0	10,0		14,0					
13.125.013	01/02	4,5	0,4	10,0	1,5	6,0		10,0					
13.125.014	02	5,6	0,4	14,5		9,5	5,0	15,7					
13.126.011	01/02	6,0	0,3	10,2	1,9	10,9	6,3	10,0					
13.127.011	01/02	6,3	0,5	6,3	0,8	6,9	5,1	7,9	6,0	1,6	4,4		
13.128.011	01/02	6,2	0,8	6,2	1,1	2,6	7,0	13,9					
13.128.012	01/02	6,8	0,8	6,8	1,4	10,0	6,7	10,3					
13.128.013	01/02	6,2	0,8	6,2	1,1	2,6	7,0	12,2					
13.129.011	01/02	6,3	0,5	14,1	2,1	9,5	9,0	12,4	2,5				
13.13.120.12	02	3,8	0,4	7,7		6,1		10,4					
13.130.011	01/02	5,8	0,3	15,8	1,5	12,2	5,8	12,8	5,3	4,8			
13.131.011	01/02	7,8	0,4	7,0	1,5	8,2	5,7	6,5					
13.132.011	01/02	2,8	0,8	26,2	1,2	5,8	1,0	15,2					
13.133.011	01/02	6,1	0,6	20,1	1,0	11,0	3,5						
13.133.012	01/02	3,2	0,5	19,5		10,4	6,0						
13.134.011	01/02	4,8	0,5	14,0	0,8	7,7	1,2	4,0	3,6				
13.135.011	01	2,8	0,8	19,5	1,0	4,6	1,3						
13.135.012	01	5,2	0,5	10,5	1,4	8,0	1,7						
13.135.013	01/02	4,7	0,6	19		3,5	1,5						
13.135.014													
13.135.015	02	4,7	0,8	21,5		4,1	1,5	8,0	9,0				
13.135.016	02	4,7	0,5	18,0		3,0	0,8	6,0	12,0				
13.135.017	02	4,8	0,5	22,5		5,0	1,5	7,6					
13.135.018	02	5,2	0,4	11,2		7,4							
13.136.011	01/02	1,5	0,5	10,3	1,2	7,7	4,8						

Endstücke

TEILE_NR	INDEX	b	c	l	d	r	s	t	u	v	w	Form	alte Teile-Nr.
13.136.012	01/02		0,5	14,6	1,3	7,0	4,8						
13.136.013	01/02		0,5	19,6	3,5	6,5	6,0						
13.136.014	02		0,5	11		7,5	5,2						
13.137.011	01/02	6,3	0,5	16,0	1,2	6,7	1,5	8,2	4,7				
13.138.011	01/02	5,2	0,5	1,7	5,5	19,2	2,9	12,2					
13.139.011	01/02	2,0	0,4	1,5	2,8	10,1		10,6					
13.140.011	01/02	13,5	0,8	13,5	6,4	9,8	7,4	6,2	7,8	3,0	13,		
13.141.011	01/02	6,2	0,8	7,8	1,4	9,5	4,7	9,4					
13.142.011	01	5,8	0,4	8,0	2,0	12,0	4,7	6,0	2,0				
13.143.011	01/02	8,8	1,2		1,4	10,5		10,9					
13.144.011	01/02	14,5	0,8	3,0	1,3	7,8		9,8					
13.144.012	01/02	12,0	0,5	2,5	1,3	7,6		8,3					
13.144.013	02	8,0	0,4	0,2	2,7	3,8		5,9					
13.145.011	01/02	6,5	0,9	14,5	1,4	14,7	0,9	10,0	6,5	6,3			
13.146.011	01/02	4,1	1,0	18,0	1,1	17,0	10,0	8,0	9,0				
13.147.011	01/02	10,1	0,8	10,0	4,6	10,6	6,1	11,0	6,0				
13.148.011	02	10,0	0,8	23,0	5,3	3,0	9,0	13,7	5,0	4,0			
13.149.011	01/02	13,5	0,8	24,0	7,0	9,0	6,3	17,0	15,0	5,0	8,0		
13.149.012	01/02	13,5	0,8	40,0	7,5	9,0	6,5	17,0	30,0	5,0	9,0		
13.150.011	01/02	3,5	1,0	17,0	1,0	6,0	3,0	8,8	6,2	3,5			
13.150.012	01	4,5	1,0	20,0		7,0	3	12,5	3,0	3,5			
13.150.013	01/02	4,3	0,8	24,0		12,0		13,0	4,7	4,5			
13.150.014	01/02	2,1	0,8	17	1,5	5,6	3,0	9,3	2,8	4,5			
13.150.015	01/02	4,0	0,8	26,0	2,0	9,0		16,0	9,5				
13.151.011	01/02	11,0	0,8	13,2	5,5		2,0	10,2	5,0	4,6			
13.151.012	02	11,0	0,8	13,2	5,55		2,0	10,2	5,0	4,6		gesc	
13.151.013	02	16,0	2,0	24,0	7,0	14,0	7,3	13,6	7,0	7,0			
13.152.011	01/02	9,1	0,8	23,3	1,5	1,7	29,8	6,5	6,3	6,5	9,0		
13.152.012	01/02	6,5	0,8		1,5		17,6	6,5	4,8		7,0		
13.153.011	02	9,5	0,5	26,7	5,3	27,0	4,0	11,0	15,0	20,2	16,		
13.153.012	02	9,5	0,6	26,7	5,3	27,0		11,0	15,0	20,2	16,		
13.154.011	01	2,0	1,0	17,5	2,9	3,0	12,0	5,5					
13.154.012	01	2,0	1,0	19,5	2,9	3,0	14,0	5,5					
13.154.013	01	2,0	1,0	17,5	2,9	3,0	12,0	5,5					
13.155.011	01/02	15,0	0,4	28,0	7,8	11,0	13,8	2,8	8,5	6,0	2,0		
13.156.011	01/02	7,0	0,8	25,0	3,2	10,5	8,2	11,0					
13.157.011		7,7	0,3	22,1	2,9	5,4	6,4	14,0					
13.157.012													
13.158.011													
13.159.011													
13.160.011	01/02	4,8	0,6	16,0	10,0	13,0	11,5	17,8	7,8				

Endstücke

TEILE_NR	INDEX	b	c	l	d	r	s	t	u	v	w	Form	alte Teile-Nr.
13.160.012	01/02	5,0	0,5	10,5	10,0	11,0	8,5	14,0	8,2				
13.160.013	01/02	5,0	0,5	14,0	10,0	8,5	12,5	14,0	8,0				
13.160.014	02	5,0	0,5	13,0	10,0	11,5	9,0	14,5	8,2				
13.160.015	01/02												
13.160.016	02	6	0,5	13,6	10	11,8	10	15,6	8				
13.161.011	01/02	10,1	0,8	11,0	4,2	11,4	4,0	4,8	8,0	7,7			
13.162.011	01/02	7,0	0,5	21,0	1,0	3,0	4,8	10,6	2,1	5,5	14,		
13.162.012	01/02	8,0	0,5	23,0		2,5	4,8	10,6	2,1	5,5	15,		
13.163.011	01/02	6,7	0,4	12,5	1,0	1,6	2,8						
13.163.012	01/02	7,7	0,5	18,0	1,2	1,5	4,8						
13.164.011													
13.165.011													
13.166.011	01	16,0	1,0	22,0	5,0	3,0	12,5	11,5	7,0	7,0			
13.167.011	01	2,0	0,3	7,0	4,5	5,5	1,5	7,6					
13.167.012	01	3,5	0,3	7,6	5,5	5,3	1,5	7,4					
13.167.013	02	2,1	0,3	7,6	5,5	5,0		7,4					
13.167.014	02	2,0	0,3	7,0	4,5	5,5		7,6					
13.167.015	02	3,5	0,3	5,5	5,5	5,3		7,4					
13.168.011		8,5	1,0	35,9	5,6	14,6	6,5	13,0	11,5		12,		
13.169.011	02	10,0	0,8	23,0	5,3	3,0	14,0	5,0	6,5				
13.169.012	02	10,0	0,8	17,0	5,3	3,2	10,0	5,0	4,0				
13.169.013	02	10,0	0,6	15,4	5,3	2,3	10,0	4,5	2,5				
13.169.014	02	10,0	0,6	15,5	4,3	2,3	10,0	4,5	2,5				
13.169.015	02	8,0	0,6	13,1	4,3	3,5	8,0	4,0	2,5				
13.169.016	02	8,0	0,6	15,0	5,2	3,5	9,0	4,0	3,5				
13.169.017	02	10,0	0,8	18,0	5,3		11,0	5,5	6,5				
13.169.018	02	8,4	0,5	9,2	5,1			3,5					
13.169.019	02	8,0	0,8	15,0	4,2	3,0	10,0	4,0	3,5				
13.169.020	02	6,0	0,5	11,0	3,1			3,5					
13.169.021	02	10,0	0,6	15,4	6,5	3,4	10,0	5,0	2,5				
13.169.022	02	10,0	0,8	17,0	6,4	3,2	10,0	5,0	4,0				
13.169.023	02	12,0	1,0	18,0	5,2		12,0	6,0	3,5				
13.169.024	02	12,0	1,0	18,0	6,2		12,0	6,0	3,5				
13.169.025	02	12,0	1,0	15,5	4,2		12,0						
13.169.026	02	10,0	0,8	13,3	5,3		10,0	5,0	2,0				
13.169.027	02	10	0,8	23	6,3	3	14	5	6,5				
13.169.028	02	13	2	32	7,5	5,5	17	7,5	11				
13.169.029	02	10	0,6	15	4,3	3,6	9,5	5	3				
13.169.030	02	10	0,6	15	5,3	3,6	9,5	5	3				
13.169.031	02	10	0,6	15	4,3	3,5	9,5	4,8	3				
13.170.011	02	4,5	0,5	9,0	3,3	6,0	6,4	4,0	1,0				

Endstücke

TEILE_NR	INDEX	b	c	l	d	r	s	t	u	v	w	Form	alte Teile-Nr.
13.170.012	02		0,6	15,0	5,2	8,0	9,0	4,5	4,0				
13.170.013	02		0,6	13,0	4,3	8,0	9,0	4,5	2,0				
13.170.014	02		0,6	13,0	5,2	8,0	9,0	4,5	2,0				
13.170.015	02		0,6	15,0	4,3	8,0	9,0	4,5	4,0				
13.170.016	02		0,5		4,2	8,4	9,0	4,0					
13.170.017	02		0,6	15,0	4,3	10,0	10,0	4,5	2,8				
13.170.018	02		0,5	10,0	4,3	8,0		5,0	1,0				
13.170.019	02		0,3	5,0	2,1	4,0		1,5					
13.170.020	02		1,0	18,0	6,4	12,0		6,5	3,3				
13.170.021	02		1,0	18,0	5,4	12,0		6,5	3,3				
13.170.022	02		0,6	15,0	5,3	10,0		4,5	2,8				
13.170.023	02		1,0	20,0	6,3	14,0		8,3	2,8				
13.170.024	02		1,0	23,0	6,4	14,0		8,3	4,9				
13.170.025	02		1,0	23,0	6,4	14,0		6,5	7,0				
13.170.026	02		0,6	12,3	3,2	7,0		5,6	2,5				
13.170.027	02		0,6	12,3	4,2	7,0		5,6	2,5				
13.171.011	01/02	21,0	2,0	31,1	3,2	10,1							
13.172.011	02	10,1	0,8	19,0	1,3	22,0	14,0	6,2	14,5	4,9	1,9		
13.173.011	02	6,3	0,8	6,4	2,4	4,0	1,1	4,7					
13.174.011	02	3,2	0,8	16,0	5,4	7,5	6,0	10,0	10,5	7,0			
13.175.011	02	8,0	0,8	19,5	1,4	1,5	11,0	15,5	6,2	4,8	7,5		
13.175.012	01/02	6,2	0,8	17,5	1,2				3,9	2,9	7,0		
13.175.013	02	6,6	0,5	15,5	1,1		9,0		4,1	2,9	7,0		
13.176.011	02	1,7	0,5	6,5	7,3	3,2	7,8	8,8					
13.177.011	01	8,0	0,5	15,0	1,4	12,5	12,1	2,7	6,9				
13.177.012	02	8,0	0,5	15,0		12,4	12,1	2,7	6,9				
13.178.011		5,5	1,0		2,8								
13.179.011	01	15,0	0,8	26,0	5,0	24,0	9,0	17,0		10,0	4,0		
13.179.012	01	15,0	0,8	26,0	4,0	9,0	17,0		10,0	4,0			
13.179.013	02	16,5	0,8	17,5	4,0	19,5	8,0	13,0	6,0	10,0	4,0		
13.179.014	02	16,5	0,8	17,5	4,0	19,5	8,0	13,0	6,0	10,0	4,0		
13.180.011	02	8,9	0,8	18,0	1,1	3,5	11,0	10,0	4,7	1,2	1,7		
13.180.012	02	7,0	0,5	16,5	1,1	2,5	10,5	10,0	2,8		1,7		
13.180.013	01	8,0	0,8	18,0	1,4	3,5	10,8	10,0	4,7		1,8		
13.181.011	02	4,0	0,5	9,5	1,2	4,0	5,5	11,0	7,0	6,6	4,0		
13.181.012	02	4,0	0,5	9,5	1,4	4,0	4,4	8,0	7,0	6,6	4,8		
13.182.011	01/02	1,2	0,5	23,0	7,6	9,0	9,8	14,5	4,5	2,8	7,0		
13.183.011	01/02	6,0	0,5	13,2	1,1	11,0	8,4	10,0	10,0				
13.183.012	02	6,0	0,5	10,5		8,2	10,3	8,6	7,0	1,8			
13.183.013	02	6,0	0,5	13,0		11,0	8,4	10,0	10,0				
13.183.014	02	6,0	0,8	15,6		8,5	17,5	10,0					

Endstücke

TEILE_NR	INDEX	b	c	l	d	r	s	t	u	v	w	Form	alte Teile-Nr.
13.184.011	01/02	4,6	0,5	12,0	10,0	1,4		8,0					
13.184.012	01/02	4,0		11,7	12,2				8,0				
13.184.013	02	4,0	0,5	8,2	9,6	6,7			6,0				
13.184.014	01/02	7,0	1,0	27,5	11,0	4,3							
13.184.015	01/02												
13.184.016	01/02												
13.185.011	02	11,2	0,5	12,2	9,2	8,5	7,5	55,2		3,2			
13.186.011	02	10,0	0,8	20,3	5,4	5,2	8,0	4,0					
13.187.011	01/02	7,0	1,0	7,0	2,4	10,0	4,0	8,0					
13.187.012	01/02	6,0	1,0	3,7		6,5		5,5					
13.188.011	01/02	9,9	1,5	23,9	5,2	19,0	12,5	9,9	5,3				
13.189.011	02	18,7	0,8	30,6	6,2	11,1	20,9	7,9	5,0	11,1			
13.189.012	01/02	10,0	0,8	20,5	5,5								
13.190.011	01/02	6,0	0,8	11,5	2,3	8,6	7,5	6,4	1,4	6,5	3,5		
13.191.011	01/02	11,3	0,8	15,0	5,5	10,8	9,2	2,4	4,8	6,0			
13.191.012	01/02	10,0	0,8	16,5	4,1	4,5	10,0	1,5	5,5	5,0			
13.192.011	01/02	5,3	0,9	14,0	9,0	8,5	5,0						
13.192.012	01/02	4,1	1,0	15,7	12,0	12,7	6,0						
13.192.013	02	5,0	0,4	7,5	5,0	7,5	2,7						
13.193.011	02	9,8	0,8	22,0	4,0	9,0							
13.194.011	01	12,7	0,8	14,5	15,0	10,0	7,0	11,0	10,0	2,50	11,		
13.195.011	01	8,0	0,8	13,0	4,7	10,1	16,0	14,0	7,0	9,0	12,		
13.196.011	02	8,9	0,8	24,5	4,5	9,6	7,8	11,7		4,5	9,1		
13.197.011	02	17,9	0,8	25,5	6,3	10,0	4,6	12,6	6,2	5,0	7,5		
13.198.011	02	10,0	0,8	20,0	6,4	16,0	11,0	8,0	6,5	5,9	1,2		
13.198.012	02	12,5	0,8	23,0	6,3	17,0	12,5	8,0	6,3	5,9	1,3		
13.198.013	01	10,0	0,8	20,0	6,4	16,0	11,0	8,0	6,5	5,9	1,2		
13.198.014	01	12,5	0,8	23,0	6,3	17,0	12,5	8,0	6,3	5,9	1,3		
13.199.011	02	6,0	0,7	11,5	3,2	2,9	3,0	5,0					
13.200.011	01/02	6,4	0,8	19,2	1,1	5,1	9,8	2,0					
13.200.012	02	6,4	0,7	11,2			5,6	10,0					
13.201.011	01/02	11,0	0,8	26,5	5,0	4,5	8,7	13,7	7,0	6,0			
13.202.011	01/02	3,2	1,0	31,0	4,2	9,3	21,0	6,0	6,0	1,4			
13.203.011		6,0	1,0	8,5	2,0	8,5							
13.204.011	01/02	17,5	0,6	26,0	3,2	5,5	8,0	5,0	5,0	10,5			
13.204.012	01/02	14,5	0,6	25,5	2,6	5,5	4,0	5,0	7,0				
13.204.016	02	25	1,5	66	4,3	6,0	12,0	12,0		15			
13.204.017				18			7,5						
13.205.012	02	8,0	0,8	26,0	3,4	4,0	5,0	12,0	5,5				
13.205.013	02	10,0	0,8	35,0	4,2	5,0	5,0	22,5	14,0				
13.205.014	02	7,0	0,8	25,0	3,3	4,0	5,0	12,0	5,0				

Endstücke

TEILE_NR	INDEX	b	c	l	d	r	s	t	u	v	w	Form	alte Teile-Nr.
13.205.014	02	12,0	1,0	34,5	4,2	5,0	5,0						
13.205.015	02	2,8	0,3	7									
13.205.016		25,0	1,5	66,0	4,3		12,0	12,0		15,7			
13.206.011		10,0	0,8	29,0	5,5	5,0	5,0	14,5					
13.206.012		12	0,8	35	4,6								
13.206.013													
13.206.014													
13.206.015													
13.206.016		16,0	1,5	86,0	4,1			43,0					
13.206.017													
13.206.018		16	0,8	63	5,3				62,2				
13.207.011													
13.207.012		12,0	0,6	35,0	4,1	7,0	14,0	11,0	7,0				
13.207.013													
13.207.014													
13.208.011		9,5	0,8	27,9	3,4	5,5	21,5	14,0	5,5	5,0			
13.209.011		14,3	0,8	40,3	4,6	6,0	30,0	22,0	4,0	8,0	5,6		
13.209.012													
13.210.011		15,0	0,8	28,0	3,6	6,0	9,5	18,0	6,0				
13.210.012		15,0	0,8	32,0	3,4	7,0	9,5	22,0	5,0				
13.210.013		13,0	1,5	32,0	5,0	7,5	16,0	22,0	5,5				
13.210.014		15,0	1,5	32,0	5,0	7,5	16,0	22,0	5,5				
13.210.015		19,5	1,5	32,0	5,0	7,5	16,0	22,0	5,5				
13.210.016													
13.210.017													
13.211.011		10,3	1,0	35,5	5,5	7,8	26,0	7,0	11,5	4,0	7,5		
13.212.011		10,0	1,0	47,4	4,2	18,0	25,0	7,5	3,0	5,0	7,0		
13.212.012		10,0	1,0	44,0	4,2	16,0	22,0	11,0	3,0	11,0	6,0		
13.212.013		10,0	1,0	18,0	4,2	13,5		6,5	3,0	8,5	6,5		
13.212.014		10,0	1,0	10,5	4,2	17,5			2,0	6,5	6,0		
13.213.011	01/02	6,5	0,5	31,5	5,0	6,5	26,5	4,5	1,5	6,7	11,		
13.214.011	01/02	9,7	0,5	32,0	5,0	6,2	21,5	12,0	7,5	5,5	5,0		
13.215.011	01/02	7,8	0,5	26,5	6,0	6,2	5,0	5,0	11,8	5,0	9,6		
13.216.011	01/02	17,0	0,8	24,0	4,3	12,3	8,3	9,0	4,5	3,2	3,9		
13.216.012	01	14,0	0,8	23,6	4,3	12,3	8,3	9,0	4,5	4,3	3,9		
13.216.013	01	17,0	0,8	23,6	4,3	12,3	8,3	9,0	4,5	3,2	3,0		
13.217.011	01/02	11,2	0,8	13,5	5,5	8,0	7,5						
13.217.012	01/02	15,0	1,0	10,2	3,5	9,6	5,5						
13.217.013	01/02	6,0	1,0	12,0	3,0	6,0	3,5						
13.217.014	01/02	10,0	0,7	11,5	5,0	10,0	5,5						
13.217.015	01/02	12,0	1,0	16,0	4,5	11,0	5,6						

Endstücke

TEILE_NR	INDEX	b	c	l	d	r	s	t	u	v	w	Form	alte Teile-Nr.
13.218.011	01/02	12,2	0,8	19,1	4,5	9,0	7,0	4,3		6,3			
13.218.012	02	10,5	0,5	3,4		4,5		4,0					
13.219.011	01	9,6	0,8	13,7	7,7	7,4	16,8	9,0	4,5	8,0			
13.220.011	01/02	8,5	0,5	28,0	3,6	7,4	4,5	17,0	7,0	3,6			
13.221.011	01	10,0	1,0	24,8	3,0	5,0	2,5	6,0					
13.221.013	01/02	8,0	0,8	27,0	3,0		8,0	6,3					
13.222.011	01/02	7,5	0,5	31,0	3,5	9,3	9,6	5,5	5,0	4,0	5,0		
13.223.011	02	8,0	0,8	32,5	9,5	14,5	6,5	8,0	6,5	6,2	9,0		
13.224.011	01	10,0	0,8	32,0	4,7	9,0	22,0	7,0	8,0	5,0	3,0		
13.225.011	02	21	0,8	20,0	4,0	9,0	7,5	6,4		8,0	4,5		
13.226.011	01	11,5	0,8	38,5	8,0	2,0	7,5	26,7	10,0	6,4			
13.227.011	02	6,3	0,8	37,5	6,3	9,5	10,0	15,3	8,3	9,5			
13.227.012	01	4,8	0,8	3,5	5,8					4,0			
13.228.011	01	6,3	0,8	26,5	4,5	8,2	6,7	2,4	1,2				
13.229.011	01	2,5	0,8	38,0	7,8	4,2	6,5	2,6	27,3	8,0			
13.230.011	02	18,0	0,8	25,5	1,7	6,0	7,0						
13.230.012	02	8,7	0,8	17	1,4	4,7	6,0						
13.230.013	02	8,0	0,8	16,5		4,8	6,3						
13.231.011	01/02	8,0	0,9	21,0	3,4	4,3							
13.231.012	01/02	7,0	0,6	23,0	4,3	4,3							
13.231.013	01/02	7,3	0,6	17,0	4,5	3,5							
13.231.014	01/02	8,3	0,8	22,5	4,0	4,0							
13.231.015	01/02	7,5	0,9	23,0	4,7	4,5							
13.231.016	01/02	9,4	0,7	33,5	4,3	4,5							
13.231.017	01/02	9,5	1,2	27,5	4							A	
13.231.018	01/02	9,5	1,2	27,5								A	
13.231.019	01/0	9,5	1,2	27,5		5,5	7	12,7				C	
13.232.011		7	0,8	17	4,2	4,5							
13.232.014	02	8,1	0,8	16,0	4,2	8,0							
13.232.015	02												
13.232.018	02	8		16	3,5	4,2							
13.232.019	02	8		16	4,2	8							
13.232.020	02	8		16	2,5	4,6							
13.232.021	02	8		16	2,5	4,6							
13.232.022	02												
13.232.023	02	5	1	15	3	7,5							
13.233.011	01/02	8,2	0,8	11,0	4,3	11,2	14,0	2,4	4,0				
13.234.011	01/02	9,5	0,6	18,0	4,8	13,0	7,2	9,0	8,4	2,5	6,0		
13.235.011	02	6,8	0,6	13,8	4,0	11,0	8,7	4,0	7,0	5,0			
13.236.011	02	8,7	0,4	12,6	5,0	4,7	6,0	9,2					
13.237.011	02	7,5	0,5	6,0	6,0	5,5	4,5	2,8	3,2	2,4	2,5		

Endstücke

TEILE_NR	INDEX	b	c	l	d	r	s	t	u	v	w	Form	alte Teile-Nr.
13.238.011	01/02	1,5	0,5	33,5	12,0	4,0	7,6	9,3					
13.239.011	01/02	8,2	1,3	34,2	3,1	17,3	26,0	4,2	7,0	4,2			
13.240.011	02	7,0	1,0	9,6	3,2	12,7							
13.241.011	02	6,4	0,8	28,0	3,7	2,7	2,7	11,0	5,0	2,0	3,5		
13.242.011	01/02	9,0	0,8	27,0	4,0	21,0	7,5	18,0	5,0				
13.242.012	01/02	9,5	0,8	32,0	4,4	24,5	8,0	22,0	5,0				
13.242.013	01/02	8,5	0,8	38,0	3,6	28,0	10,0	38,3	7,5				
13.243.011	01/02	17,3	0,8	21,0	4,0	9,0	5,0	11,0	7,5				
13.244.011	01/02	6,5	12,	25,0	4,0	6,0	3,0	3,5	3,5	7,0	3,2		
13.245.011	01/02	3,5	0,6	17,0	3,5	4,0	19,5	3,2	2,0				
13.246.011	01/02	10,5	1,2	36,0	4,3	8,0	21,0	2,3					
13.247.011	01/02	12,0	0,8	10,5	13,0	6,0	15,5	9,5	2,0				
13.248.011	02	12,0	1,0	24,5	9,5	9,0	18,0	4,0	7,3				
13.249.011	02	5,0	0,4	13,8	9,0	4,0	4,3	3,2					
13.250.011	01/02	2,0	0,5	12,5	9,0	1,1	3,0						
13.251.011	01/02	6,0	1,0	15,5	6,0	10,0	2,7						
13.252.011	02	6,8	0,5	17,8	5,0	8,0	7,0	7,3	2,4	3,0	1,4		
13.253.011	01/02	5,0											
13.253.012	01/02												
13.253.013		8,0											
13.253.014	01/02	10,0											
13.253.015	01/02	12,0											
13.253.016	01/02	14,0											
13.253.017	01/02	16,0											
13.253.018	01/02	18,0											
13.254.011	01/02	6,0	0,4	10,6	1,1	3,5	5,5	5,0					
13.255.011	01/02	4,5	7,8	8,7	1,5	4,0	1,5						
13.256.011													
13.256.012													
13.257.011	01	10,0	3,4	12,0	4,0								
13.257.012	02	6,0		6,0									
13.258.011	14.0	2,0	3,0	6,0	6,5	7,5	4,8						
13.259.011	01/02	25,0	1,0	22,0	5,5	12,0	8,5	13,2	7,5	11,0	4,0		
13.260.011	02	14,0	0,6	13,0	3,5	16,0	2,5	9,5	7,0				
13.260.012	02	10,2	0,8	10,0	3,0	11,5	2,9	5,0					
13.261.	01	7,0	0,5	7,0	4,5	10,0	6,4			2,8			
13.261.011	02	10,0	0,8	12,0	6,2	7,2	7,2	5,8	2,8	3,0	3,0		
13.261.012	02	10,0	0,8	12,0	6,2	7,5	7,2	5,8	2,8	6,3	3,0		
13.261.013	02	12,5	0,8	14,0	7,2	6,9	6,9	5,8	2,8	6,3	3,0		
13.261.015	02	7,0	0,5	7,0	4,5	10,5	6,4			2,8			
13.262.011	01/02	11,0	9,0	25,0	18,5	3,2	12,0	6,0	18,0	3,0	5,5		

Endstücke

TEILE_NR	INDEX	b	c	l	d	r	s	t	u	v	w	Form	alte Teile-Nr.
13.263.011	01/02	10,0	0,8	12,0	4,5	5,0	7,0	4,0	4,0				
13.264.011	02	22,5	1,0	22,0	8,8	7,4	7,6	13,5	7,4	5,1			
13.265.011	01/02	7,0	0,8	43,0	3,2	14,0	4,0	21,4	38,0	1,5	4,8		
13.266.011		10,0	2,2	54,5	5,3	35,0	3,0	6,5		10,0	13,		
13.267.011	02												
13.267.012	02	5,8	0,8	19,0	4,8		3,8						
13.267.013	02	7,6	0,5	19	3	4,8	3,1						
13.267.014	02	8,1	0,8	20,2	4,8	4,8	4,8	8,0					
13.268.012	02	6	0,8	29,6	19,0	8,9	16,0	9,5	8,0	6,3	8,0		
13.269.011	01/02	6,3	12,	12,5	3,0	0,8	6,0						
13.269.012	01/02	6,3	10,	12,5	3,0	0,8							
13.270.011	01/02	4,9	0,5	24,5	1,0	15,5	10,7	6,2					
13.270.012	01/02	2,5	0,5	18,1	13,0	9,5	6,1						
13.271.011	01/02	9,0	0,5	25,5	4,5	5,7	4,7						
13.271.012	02	7,5	0,8	19,0	7,5	4,8	13,0						
13.273.011	01/02	6,0	0,8	23,0	6,5	5,0	3,0	11,0	6,0	3,0			
13.273.012	01/02	5,7	0,8	6,3	5,0	2,5	6,0	3,0					
13.274.011	01/02	9,8	0,8	24,0	5,8	9,0	8,5	4,7	1,4	7,0			
13.275.011	01/02	10,0	1,0	25,0	6,5	6,5	5,0	6,5	4,0	15,0			
13.276.011	01	4,8	0,8	23,5	1,3	10,5	16,0						
13.276.012	02	2,9	0,4	13,5									
13.276.013	02	4,6	0,6	30,0	1,7	15,0	21,0						
13.276.014	01/02	9,5	1,2	27,5			20,5						
13.277.011	01/02	4,8	0,5	18,0	6,4	6,5	2,2	4,0					
13.277.012	01/02	6,3	0,8	21,0	9,3	4,3	6,0	5,5					
13.277.013	01/02	5,1	0,5	16	8,3	3,6	4,9	3,8					
13.277.014	01/02	5,4	0,5	18	8,3	4	6,5	5					
13.278.011	01/02	4,8	17,	20,0	3,0	4,8	6,5	4,5	3,0,				
13.279.011	02	8,5		12,0	8,5	5,0							
13.280.011	01/02	18,5		16,3	4,2	23,0							
13.281.011	01	11,0		10,0	26,0								
13.282.011	02	9,5	1,0	25,0	4,3	3,5	4,8	14,0	27,0				
13.282.012	02	9,5	1,0	25,0	5,3	17,5	4,8	14,0	27,0				
13.283.011	02	10,0	6,0	21,0	4,0	7,0	17,0	17,0	7,5				
13.284.011	02	8,0	5,3	6,0	7,5								
13.284.012	02	13,0	6,0	7,0	11,0								
13.284.013	02	8,6	5,6	4,8	7,8								
13.284.014	02		3,8	7,1	9,0								
13.284.015	02	8	6	4,4			7,4						
13.284.016	02	7	6	4,5			7,4						
13.285.011		13,5		19,0	8,1	4,1							

Endstücke

TEILE_NR	INDEX	b	c	l	d	r	s	t	u	v	w	Form	alte Teile-Nr.
13.285.012		13,5		19,0	8,9	5,4							
13.286.011	02	17,5		18,5	4,2	7,5							
13.287.011		13,0		10,0	12,5	13,7	5,0						
13.288.011	02	8,1		11,0	4,2	5,3							
13.289.011	01/02	17,0	1,6	21,0	3,0	9,0	11,0						
13.290.011													
13.291.011	01/02	7,0	0,3	10,5	2,9	5,5	3,0						
13.292.011	02	8,8	0,5	17,5	4,8	7,0							
13.293.011	02	8,5	0,7	23,0	6,0	12,0							
13.294.011	02	11,0	0,8	29,5	6,0	7,0	5,0	5,0					
13.295.011	02	9,0	1,0	19,0	5,0	8,0	10,5						
13.296.011	01/02	25,5	0,5	22,0	20,0	3,9	8,0						
13.297.011	02	9,0	0,4	15,0	4,8	10,0							
13.298.011	02												
13.299.011	02	12,0	0,8	15,0	5,5	10,0							
13.300.011	02	17,5	0,5	26,0	5,0	6,3							
13.301.011	02	7,0	9,9	32,5	4,8	18,0							
13.301.012	02	7,0	9,9	32,5	6,3	18,0							
13.302.011	01/02	1,7	0,4	10,0	4,5								
13.303.011	02	8,3	0,8	11,0	1,4		4,0	4,8	6,3				
13.304.011	02	8,0	0,6	20,0	3,1								
13.304.012	02	18,0	1,0	28,0	3,1								
13.304.013	02												
13.305.011	01/02	7,0	4,5	3,0									
13.306.011	02	27		43,5			4,5						
13.306.012	02	20,5		23,0	8,6		4,5						
13.306.013	02	17,5		30,5	5,6		4,5						
13.307.011	02	6,0	0,8	17,7	3,8								
13.308.011	02	15,5	1,5	95,0	7,0	27,5	6,0	27,0					
13.309.011	02	15,0	1,5	95,0	9,0	27,5	6,0	27,0					
13.310.011													
13.311.011	02	4,0	0,7	6,8	2,3								
13.312.011	02	6,0	0,5	21,0	4,8	2,8							
13.313.011	02	6,0	1,0	10,0									
13.314.011	01	10,5	1,0	19,0	5,0	10,0	7,0						
13.315.011	01	22	1,5	20	dia 4	12	10	6					
13.316.011	02	12	0,5	30	17	11,5	2,5	7,8					
13.317.011	01	4,8	0,3	40,7	3,5	2	10,5	20,7	11,5				
13.318.011	02	8,5	0,3	10,5	5	7							
13.319.011	01	6,0	0,8	10	2,8	9,5							
13.320.011	02	10	0,5	14,5	11,5	9							

Endstücke

TEILE_NR	INDEX	b	c	l	d	r	s	t	u	v	w	Form	alte Teile-Nr.
13.321.011	02	4	0,5	16	4	17	2	5					
13.322.011	02	15	1	27	8,2	17,5		9	11,4				
13.323.011	02	4,8	0,8	17		8							
13.324.011	02	4,5	0,8	12,5	5	10	9	9					
13.325.011	02	2,9	1	34	1,6	2,8							
13.326.011	02	9,5	0,8	12,5	10	9,6	9	5,9	2,8				
13.327.011	01/02	14	0,8	28	6,3	10	7,9	21	13				
13.328.011	02	23	0,7	34	9	13	8	4,8	12	5,6	22		
13.329.011	02	15	1,2	19		10	10						
13.330.011	02	6	0,8	12	8	5,5	5	3					
13.331.011	02	10,5	1	12	4	10,5	1,5	4	4,5	4	4		
13.332.011	02	6,3	0,8	18,5		7,17	10	8,5					
13.333.011	01/02	7	0,5	17	3,2		9	1,2	9	4,5	13		
13.334.011	02	2	0,5	9,5		7		6	7	3			
13.335.011		16	12	9,9	4,1	2	1,9	0,6	3,5	6,5	13		
13.336.11													
13.337.11	01	7,5	0,8	17,5	4,5								
13.337.12	01	8,5	0,8	17,5	4,5								
13.338.11													
13.339.11	02	14,5	0,8	15	4	10,8		7	5	6	5		



**SCHMIDTHAMMER
ELEKTROKOHLE GMBH**

Postfach 2020

Walpersdorfer Straße 33-39
D-91126 Schwabach / Nürnberg

Germany

Tel. 091 22/1806-0

Fax 091 22/180660

mega@schmidthammer-elektrokohle.de

www.schmidthammer-elektrokohle.de

13-2002