



TECUMSEH  
EUROPE



ACTROL PARTS, A DIVISION OF GSA INDUSTRIES (AUST.) PTY. LTD.  
A.C.N. 004 784 301 A.B.N. 71 004 784 301

# Commercial Compressors R22.



Proven performance in medium  
temperature applications.

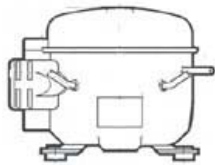


TECUMSEH  
EUROPE



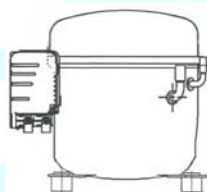
L'UNITE  
HERMETIQUE

# Commercial Compressors Medium Temperature R22 Capacity Comparison Data.



## AEZ Model

Tecumseh Europe/L'Unite Hermetique				Kirby		Electrolux	
Cat No.	Model No.	Description	Watts @ -5°C	Model No.	Watts @ -5°C	Model No.	Watts @-5°C
258650	AEZ4425E	Compressor R22 1/5 HP	329	AE5MHG-1KS	340	L40TN	368
258651	AEZ4430E	Compressor R22 ¼ HP	430	AE6MHG-1KS	400	L45TN	398
258652	AEZ4440E	Compressor R22 1/3 HP	588	AE8MG-1KS			
258653	AEZ9440T	Compressor R22 . 1/3 HP	588				



## CAE Model

Tecumseh Europe/L'Unite Hermetique				Kirby		Danfoss	
Cat No.	Model No.	Description	Watts @ -5°C	Model No.	Watts @ -5°C	Model No.	Watts @-5°C
258654	CAE4450E	Compressor R22 3/8 HP	710	AE9MG-1KS	705	L76TN	673
258655	CAE9450T	Compressor R22 3/8 HP	710	AE9MG-1KS	705		
258656	CAE9460T	Compressor R22 ½ HP	909	AE12MG-1KS	1020	P12TN	1063



## CAJ Model

Tecumseh Europe/L'Unite Hermetique				Kirby		Electrolux	
Cat No.	Model No.	Description	Watts @ -5°C	Model No.	Watts @ -5°C	Model No.	Watts @-5°C
258657	CAJ9480T	Compressor R22 5/8 HP	1278	AE16MG-3KS	1390	-	
258658	CAJ9510T	Compressor R22 1 HP	1547	AE18MG-1KS	1530	R18TN-V	1619
258659	CAJ9513T	Compressor R22 1 <sup>1</sup> / <sub>8</sub> HP	1896	WJ22MHG-1C	1920	S22TN-V	1955
258660	CAJ4517E	Compressor R22 1 <sup>1</sup> / <sub>4</sub> HP	2171	WJ26MHG-1C	2430	S26TN-V	2453



## TAJ Model

Tecumseh Europe/L'Unite Hermetique				Kirby		Electrolux	
Cat No.	Model No.	Description	Watts @ -5°C	Model No.	Watts @ -5°C	Model No.	Watts @-5°C
258661	TAJ4517TVALVES	Compressor R22 /5021 <sup>1</sup> / <sub>4</sub> HP. 3PH	2171				
258662	TAJ4519TVALVES	Compressor R22/502 1 <sup>1</sup> / <sub>2</sub> hp. 3PH	2911				

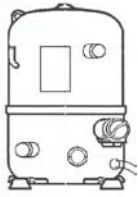
Capacity rating basis: 35°C Ambient, 11K Return Gas Superheat, 54.5°C Condensing, 46°C Liquid entering Expansion Valve. Data extracted from 'LUH' General Catalogue 2001-50Hz and manufacturers brochures. This information should not be used exclusively to select a compressor. Consult manufacturer or wholesaler for selection assistance.

- Genuine factory Tecumseh compressors
- High efficiency
- Charged with mineral oil and dry nitrogen
- Rotalock suction valve on CAJ/TAJ models
- Rotalock suction and discharge valves on FH/TFH and TAG models
- Crankcase heater and oil sight glass on FH/TFH and TAG models
- All models suit capillary tube or expansion valve operation
- Anti- Vibration Mounts supplied

# Commercial Compressors

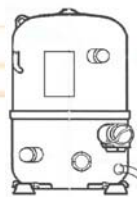
## Medium Temperature R22

### Capacity Comparison Data



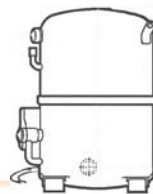
#### FH Model

Tecumseh Europe/L'Unite Hermetique				Kirby		Electrolux	
Cat No.	Model No.	Description	Watts @ -5°C	Model No.	Watts @ -5°C	Model No.	Watts @ -5°C
258663	FH4522F VALVES	Compressor R22 1 ¾ HP	2927	AW38MHG-1C	2860	S34UN	3250
258665	FH4524F VALVES	Compressor R22 2 HP	3219	AW43MHG-1C	3600		
258667	FH4531F VALVES	Compressor R22 2 ½ HP	4517	AWJMHG-1C	4508		



#### TFH Model

Tecumseh Europe/L'Unite Hermetique				Kirby		Electrolux	
Cat No.	Model No.	Description	Watts @ -5°C	Model No.	Watts @ -5°C	Model No.	Watts @ -5°C
258664	TFH4522F VALVES	Compressor R22 1 ¾ HP	2927				
258666	TFH4524F VALVES	Compressor R22 2HP	3219	AW43MHG-2C	3600		
258668	TFH4531F VALVES	Compressor R22 2 ½ HP	4517	AW54MHG-2C	4508		
258669	TFH4540F VALVES	Compressor R22 3 HP	5745	AV73MHG-2C	5560		



#### TAG Model

Tecumseh Europe/L'Unite Hermetique				Kirby		Electrolux	
Cat No.	Model No.	Description	Watts @ -5°C	Model No.	Watts @ -5°C	Model No.	Watts @ -5°C
259670	TAG4546T VALVES	Compressor R22 4HP. 3PH	5934	AV73MHG-2C	5560		
258671	TAG4553T VALVES	Compressor R22 4 <sup>1</sup> / <sub>2</sub> HP.3PH	7022	AV91MHG-2C	7500		
258673	TAG4561T VALVES	Compressor R22 5HP.3PH	8164				
258676	TAG4568T VALVES	Compressor R22.6HP. 3PH	9180	AG125MH G-2C	8650		
258678	TAG4573T VALVES	Compressor R22.6 <sup>1</sup> / <sub>4</sub> HP.3PH	9804	AG135MH G-2C	9350		

Capacity rating basis: 35°C Ambient, 11K Return Gas Superheat, 54.5°C Condensing, 46°C Liquid entering Expansion Valve. Data extracted from 'LUH' General Catalogue 2001-50Hz and manufacturers brochures. This information should not be used exclusively to select a compressor. Consult manufacturer or wholesaler for selection assistance.

Tecumseh Europe is a fully owned subsidiary of Tecumseh USA. All L'Unite Hermetique products are manufactured by Tecumseh Europe- exclusive to Actrol. Actrol provides you with genuine Tecumseh equipment.

Tecumseh Europe is renowned for its reliability borne from substantial investments in research and development and rigorous testing. That's why Tecumseh Europe is the proven leader.



ACTROL PARTS, A DIVISION OF GSA INDUSTRIES (AUST.) PTY. LTD.  
A.C.N. 004 784 301 A.B.N. 71 004 784 301

# Commercial Compressors

## Medium Temperature R22

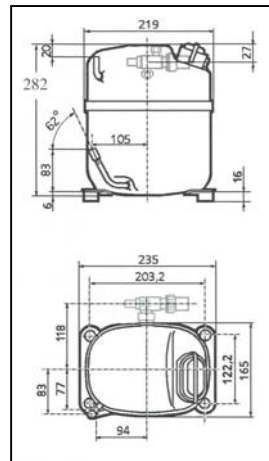
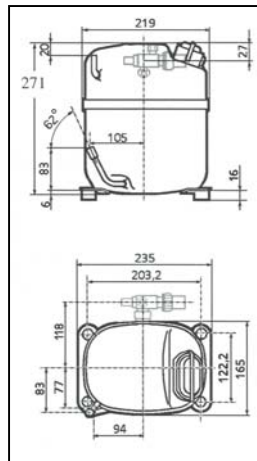
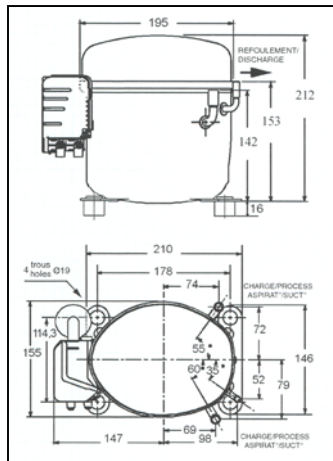
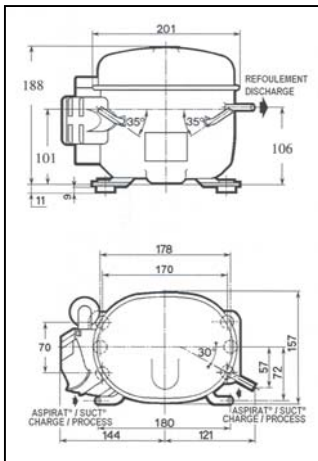
### Dimensions

AEZ4425/4430

CAE4450/9450/9460

CAJ9480/9510

CAJ9513/4517  
TAJ4519/4519



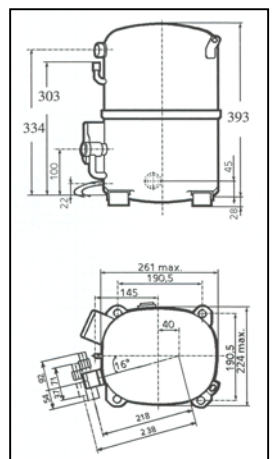
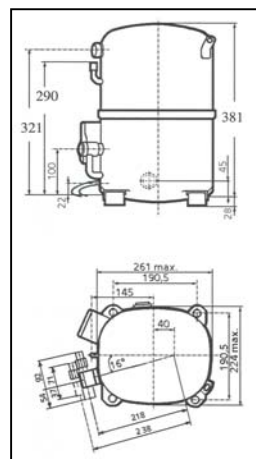
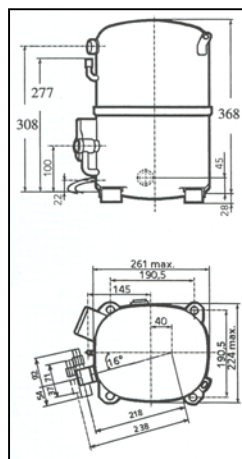
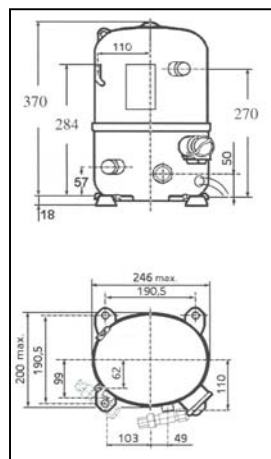
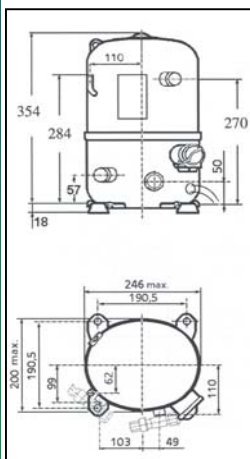
FH4522/4524  
TFH4522/4524

FH4531/  
TFH4531/4540

TAG4546

TAG4553/  
4561

TAG4568/  
4573



L'UNITE  
HERMETIQUE