



PORTABLE



DOT PEEN

Portable systems

Standalone hand-held units



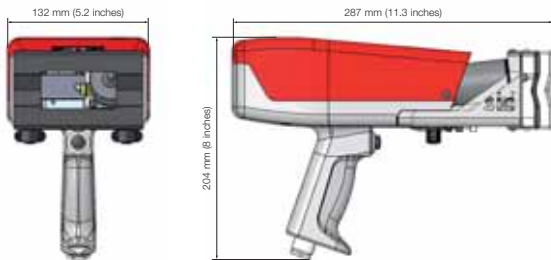
► e8 RANGE

e8-p62

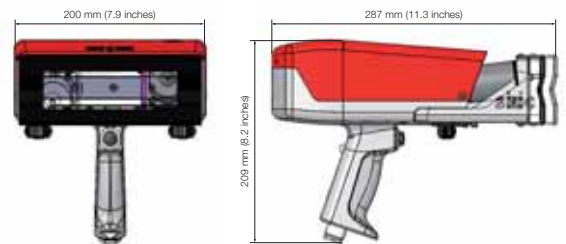
e8-p122



e8-p62



e8-p122



Electrically driven:

- Electromagnetic dot marking stylus assembly
- No air supply required

Low cost of ownership:

- No consumables
- No maintenance required

Robust and reliable:

- Cast aluminum body and handle
- Stainless steel front end with position memory (stability and rigidity)
- Heavy duty design

Marking of heavy or difficult accessible parts, up to 62 Hrc

High performance:

- Constant precision and quality
- High speed
- Powerful integrated software

Simple and user-friendly:

- Lightweight
- Mobile, ergonomic and flexible
- Simple programming

Wide range of options

MECHANICAL TECHNICAL FEATURES

p62

p122

Marking window

60 x 25 mm / 2.4 x 1 inches

120 x 25 mm / 4.7 x 1 inches
(option 120 x 40 mm /
4.7 x 1.6 inches)

Weight

3.5 Kg / 7.7 lb

4.1 Kg / 9 lb

Robotic cable

7.5m / 295.3 inches (option up to 15 m / 590.5 inches)

Stylus

Carbide

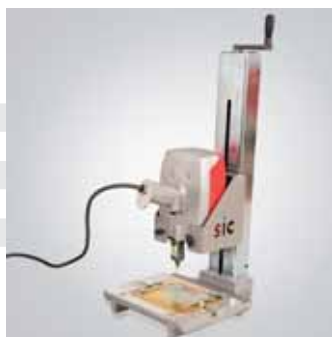
Stability

V-groove front plate

Setup assistance

Position memory front plate

OPTIONS



Column / support plate



Rotary (D) axis



Cart / battery



Bar-code and Data Matrix reader



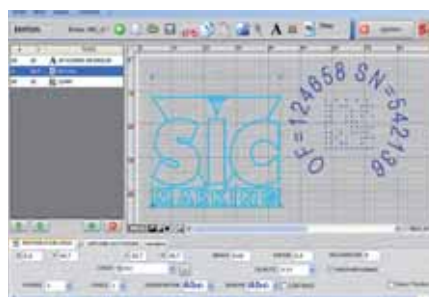
Custom clamping system / magnetic clamping



Hook and
balancing
system



Maintenance kit



PC-based software

e8



- Fully programmable
- Data Matrix marking
- Angular and circular marking
- Marking history and auto diagnostic functions
- Standalone operation (no PC required)
- Industrial membrane keyboard
- Fully enclosed controller (IP40)
- Large graphical screen

ELECTRONIC TECHNICAL FEATURES

| e8 | |
|---------------------------|--|
| Dimensions (d x l x h) | 322 x 413 x 112 mm / 12.7 x 16.2 x 4.4 inches |
| Weight | 5.4 Kg / 11.9 lb |
| LCD display | 115 x 65 mm / 4.5 x 2.5 inches |
| Keyboard | Qwerty integrated, membrane overlay |
| Power | 300 Watt |
| Power supply | Single phase, 85 to 260 VAC, 50 to 60 Hz |
| Number of controlled axis | 2 (3rd and 4th axis optional) |
| Operating temperature | From 5 to 40°C / 40 to 105°F |

Software

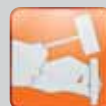
| | |
|-------------------------|---|
| Marking files | Up to 2000 |
| Memory | 512 Ko |
| Alphanumeric characters | Serial number, date coding |
| Logos | Download from PC |
| Data Matrix | Up to 348 characters, 48 x 48 dots |
| Fonts | Arial, Courier, OCR, OCRA (custom fonts optional) |
| Style | Angular, radial, inverse, mirror |
| Speed | Up to 5 characters/sec. |
| Character size | From 0.1 mm / 0.004 inches to 99 mm / 4 inches (restricted by marking window size) |
| Impact force | 9 adjustable levels |
| Depth | Up to 0.5 mm / 0.02 inches (depending on material marked) |
| Resolution between dots | 0.05 mm / 0.002 inches |
| Maximum stylus stroke | Up to 9 mm / 0.35 inches |
| Work shift management | 10 shifts |
| Password protection | 3 security levels |
| Historical function | Available by password |
| Maintenance assistance | Auto diagnostic component |
| Software | 15 languages |

Communications

| | |
|-------------------------|--|
| Ports | RS232, RS422, USB (RS485 and TCP/IP Ethernet optional) |
| Inputs/Outputs | 16 |
| External keyboard input | MINI DIN |
| External output | 5 V - 0.5 A and 24 V - 0.5 A |
| Logos | Logo creation and transfer software |
| File backup on PC | Controller/PC transfer software |
| Database link | Optional |

SIC Marking® ACTIVITIES

PERMANENT MARKING



CONVENTIONAL MARKING



DOT PEEN



SCRIBING



LASER

INDUSTRIAL VISION



INDUSTRIAL VISION

TURNKEY SOLUTIONS



TURNKEY SOLUTIONS



SIC Marking® equipment is available worldwide. Contact us to be directed towards a distributor serving your area.



SIC Marking®

13, route de Limonest
Zac de la Braille
69380 Lissieu - France
Tel.: +33 (0)4 72 54 80 00
Fax: +33 (0)4 78 47 39 40
www.sic-marking.com
info@sic-marking.com

