



Spare parts suitable for: CIMBALI

Spare parts suitable for coffee machines



G.E.V. Großküchen-Ersatzteil-Vertrieb GmbH
Robert-Koch-Straße 3a
82152 Planegg/Munich
Germany

Phone: +49 (0)89 745572-0
Fax: +49 (0)89 745572-83
order@gev-online.com
www.gev-online.com

Member of the  **GEV GROUP**

Solenoid valves

Scem/Parker



Item	Order	Description
1	370057	cpl., 3 ways, 230V AC
1	370050	cpl., 3 ways, 24V AC
2	370062	Solenoid square base
3	371029	Magnetic coil, 230V AC
3	371036	Magnetic coil, 24V AC

Scem/Parker



Item	Order	Description
1	370059	cpl., 1/4", 3 ways, 230V AC
1	370219	cpl., 1/4", 3 ways, 24V AC
2	370206	cpl., 1/8", 2 ways, 230V AC
2	370066	cpl., 1/8", 2 ways, 24V AC
3	371029	Magnetic coil, 230V AC
3	371036	Magnetic coil, 24V AC

Solenoid valves

Lucifer



Item	Order	Description
1	370053	cpl., 3 ways, 230V AC
1	370054	cpl., 3 ways, 24V AC
1	370051	cpl., 3 ways, 24V DC
2	370061	Solenoid square base
3	371031	Magnetic coil, 230V AC
3	371032	Magnetic coil, 24V AC
3	371043	Magnetic coil, 24V DC

Solenoid valve accessories

Scem/Parker, Lucifer



Item	Order	Description
1	371090	Plug/big
2	371095	O-Ring (viton)
3	371100	O-Ring (silicon)

Sirai



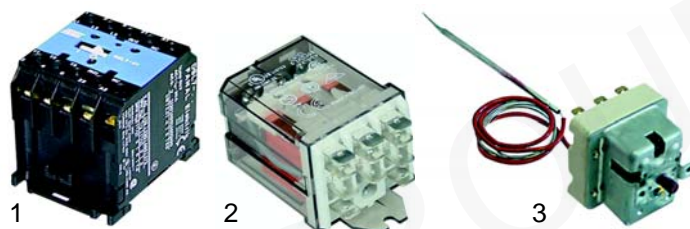
Item	Order	Description
1	370168	cpl., 1/8", 2 ways, 230V AC
1	370064	cpl., 1/8", 2 ways, 24V AC
2	371071	Magnetic coil, 230V AC
2	371070	Magnetic coil, 24V AC
3	371091	Plug/small

Pressure switches



Item	Order	Description
1	541021	Pressure switch
2	520139	Membrane
3	541020	Pressure switch, 1 pole

Contactors, relays, thermostats



Item	Order	Description
1	380213	Contacteur, 230V
1	380401	Contacteur, 12V DC
1	380405	Contacteur, 12VAC
2	380403	Relay, 230V
2	380404	Relay, 24V AC
2	380400	Relay, 12V DC
3	390324	Safety thermostat

Switches

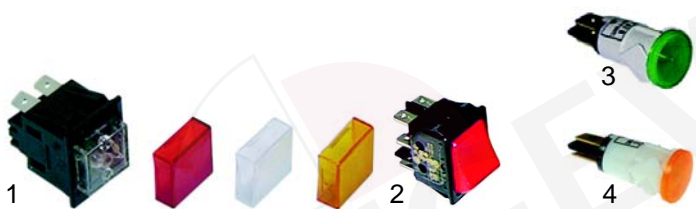


Item	Order	Description
1	346030	Magnetic switch
2	346024	Float
3	346025	Magnet
4	345269	Micro switch

Switches

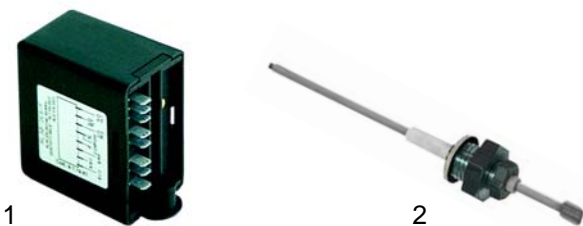


Item	Order	Description
1	345150	Switch group
2	345149	Changer switch, M20 - M30
3	112006	Knob spring clip
4	112005	Knob
5	112004	Knob



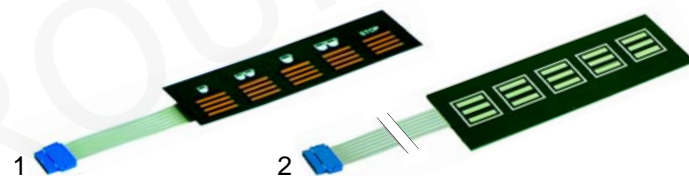
Item	Order	Description
1	345090	Push button, 2 poles
1	345033	Switch, 2 poles
2	301015	Push button, 2 poles
3	359142	Lamp/green, 230 V
4	359143	Lamp/yellow, 230 V

Level controllers



Item	Order	Description
1	400238	Level controller, RL30/3ES/F + Buzzer 9.1.19-61, 230 V
2	400020	Level probe, 150 mm

Key push buttons



Item	Order	Description
1	400335	Key push button, M20
2	400336	Key push button, M30

Flowmeter



Item	Order	Description
1	400209	Flowmeter, 1/4", (Digimesa)
2	400004	Flowmeter, 1/4", (Gicar)
3	400256	Plug
4	400257	Flowmeter turbine (Gicar)
5	400258	Case gasket

Elements



Item	Order	Description
1	417014	1 group, 1300 W, 230 V, 1 circuit (Junior)
2	417011	1 group, 1800 W, 230 V, 3 circuits, M20/30
3	417013	2 groups, 2850 W, 230 V, 3 circuits (Alina)

Elements



Item	Order	Description
1	417012	2 groups, 3750W, 230 V, 3 circuits, M20/30
2	417099	3 groups, 5790W, 230 V, 3 circuits (Alina)
3	529484	Gasket (klingerit)
4	528004	Gasket (teflon)



Item	Order	Description
1	417015	1 group, 2700 W, 230 V
2	417016	2 groups, 4000 W, 230 V
3	417098	3 groups, 5000 W, 230 V
4	529496	Gasket, M15

Boiler gaskets



Item	Order	Description
1	528121	Boiler gasket, 180 x 140 x 3 mm, M20 - M30
2	528122	Boiler gasket (teflon), 180 x 140 x 3 mm, M20 - M30
3	528120	Boiler gasket, 215 x 192 x 3 mm, M15

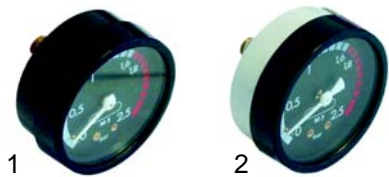
Manometer



Item	Order	Description
1	541210	Manometer, double scale, M15
2	541211	Manometer, double scale, M20



Item	Order	Description
1	541212	Manometer, 0 - 2,5 bar, M25 - M30
2	541213	Manometer, 0 - 15 bar, M25 - M30



Item	Order	Description
1	541275	Manometer, 0 - 2,5 bar
2	541276	Manometer, 0 - 3 bar, connection double cone ring

Valves



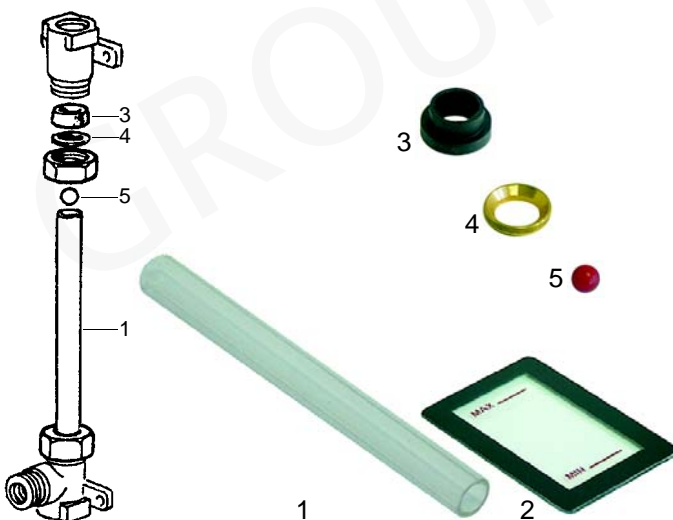
Item	Order	Description
1	529312	Safety valve, 1,8 bar, 3/8"
2	529316	Safety valve/sealed, 1,8 bar, 3/8"
3	529307	Safety valve/sealed, 1,8 bar, 1/4"
4	529361	Cu-gasket, 1/4"
5	529349	Cu-gasket, 3/8"

Valves



Item	Order	Description
1	529303	Empty valve (stainless steel), 1/4"
2	529304	Empty valve, 1/4"
3	529361	Cu-gasket, 1/4"

Level glass

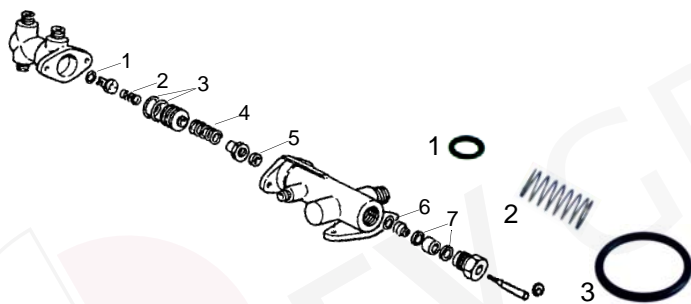


Item	Order	Description
1	529379	Level glass, 135 x 12 mm, M15
1	529380	Level glass, 117 x 12 mm, M20 - M30
2	529384	Scale, M15
2	529385	Scale, M20 - M30
3	529382	Level glass gasket
4	529383	Press washer
5	529355	Plastic ball



Item	Order	Description
1	529381	Level glass, 109 x 12 mm (Alina)
2	529382	Level glass gasket

Water inlet valve

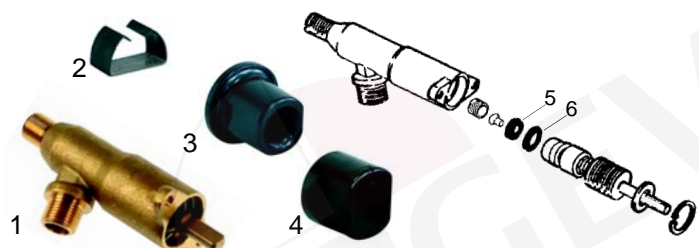


Item	Order	Description
1	529368	O-ring
2	529497	Spring
3	529498	O-ring



4	529499	Spring
5	529539	Gasket, 15 x 8 x 4 mm
6	529544	O-ring
7	528957	Gasket (teflon), 11 x 8 x 3 mm

Taps



Item	Order	Description
1	529503	Tap complete, steam/water
2	111062	Knob spring
3	111060	Knob, M15
4	111061	Knob, M20



5	529546	Gasket, 11 x 3 x 3 mm
6	528200	O-ring

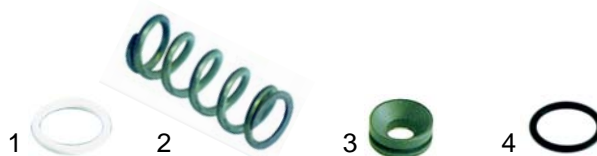
Delivery pipes



Item	Order	Description
1	529571	Steam pipe, M15
1	529574	Steam pipe (stainless steel), M15
2	529572	Steam pipe, M20
2	529575	Steam pipe, M20 (stainless steel)
3	529576	Steam pipe, M25 - 30
3	529577	Steam pipe, M25 - 30 (stainless steel)
4	529578	Water pipe

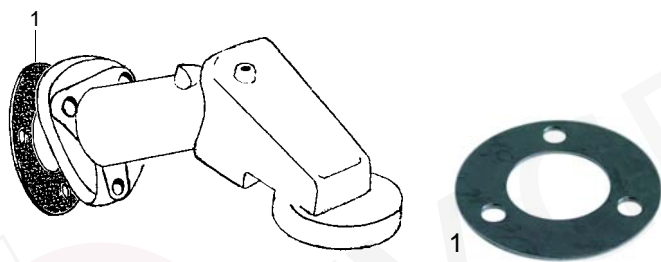


Item	Order	Description
1	528205	Gasket, 20 x 17 x 2 mm
2	529708	Spring
3	529547	Press washer
4	529545	O-ring
5	529548	Gasket (teflon)
6	529707	Union nut
7	529627	Hand grip



Item	Order	Description
1	528205	Gasket, 20 x 17 x 2 mm
2	529708	Spring
3	528204	Bush
4	529545	O-ring

Group M15



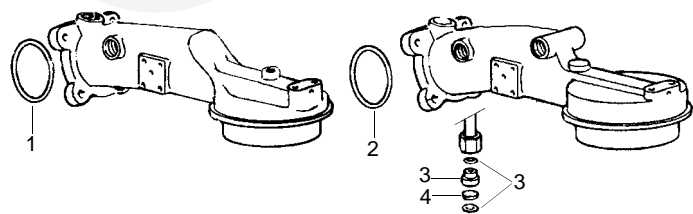
Item	Order	Description
1	528430	Group gasket, 94 x 2 mm
1	528431	Group gasket, 94 x 3 mm

Filter holder gaskets



Item	Order	Description
1	528033	Shim gasket, 71 x 68 mm
2	528036	Filter holder/conical
3	528035	Filter holder/conical, 70 x 56 x 8 mm

Group M20 - M30



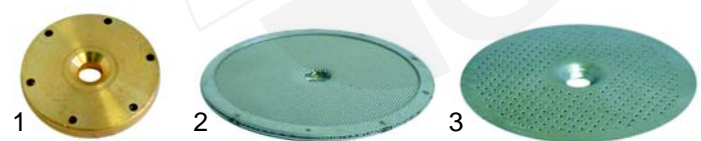
M20 - M25

M27 - M30



Item	Order	Description
1	528004	Gasket (teflon)
2	529484	Gasket (klingerit)
3	528433	Cu-gasket
4	528434	Jet
5	528435	Filter

Shower



Item	Order	Description
1	528436	Water dispersion
2	529084	Shower, Ø51,5 mm
3	529089	Shower, M30

Blank filter



Item	Order	Description
1	529024	Cleaning membrane
2	529023	Blank filter

Filters



Item	Order	Description
1	529017	Filter/1 cup (7g)
1	529018	Filter/1 cup (6g)
2	529019	Filter/2 cups (14g)
2	529020	Filter/2 cups (12g)
3	529079	Filter holder spring

Filters



Item	Order	Description
1	529051	Filter holder, 2 holes, M10
2	529052	Filter holder, 3/8", M10
3	529053	Handle, M10

Spouts



Item	Order	Description
1	529009	Spout, 2 holes, 1 ways
2	529010	Spout, 2 holes, 2 ways
3	529001	Spout 3/8", 1 way long
4	529003	Spout 3/8", 1 way curved
5	529007	Spout 3/8", 2 way short

