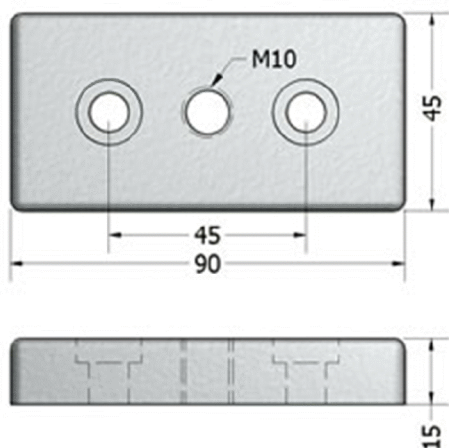




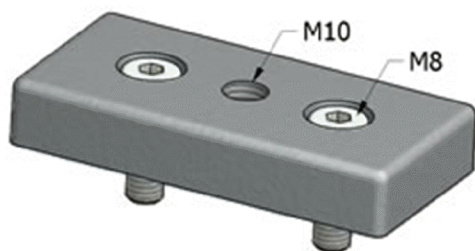
Base Plate 45x90 M10 Thread

Part. N° 21.1038



APPLICATIONS

- Attach M10 leveler to end of 45x90 profile



TECHN. DATA / ITEMS SUPPLIED



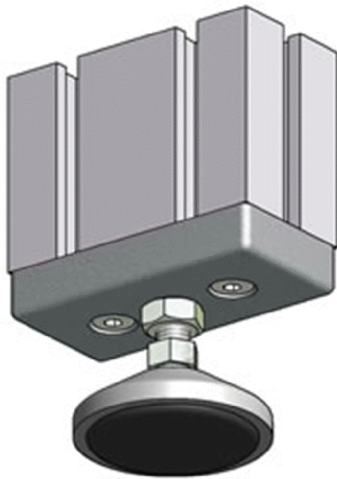
- Cast aluminum, powder coated gray

- Qty 2 M8x22 SHCS

- Thread Dia. - 10mm

- Thread Pitch - 1.5mm

- Weight - .164 kg



ASSEMBLY

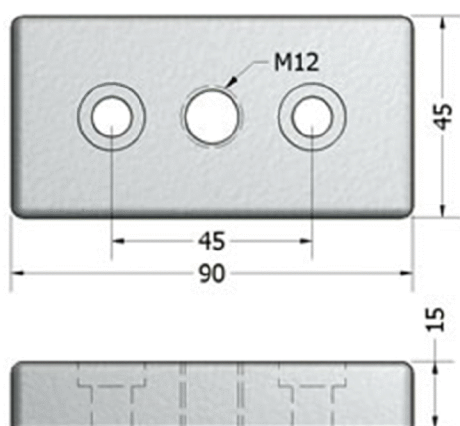
- Tap both holes on end of 45x90 using M8 Forming Tap,
Part # 26.1082

- Insert supplied M8x25 screws thru holes in plate and tighten to
profile



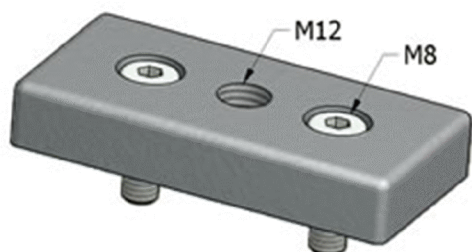
Base Plate 45x90 M12 Thread

Part. N° 21.1039



APPLICATIONS

- Attach M12 leveler to end of 45x90 profile



TECHN. DATA / ITEMS SUPPLIED



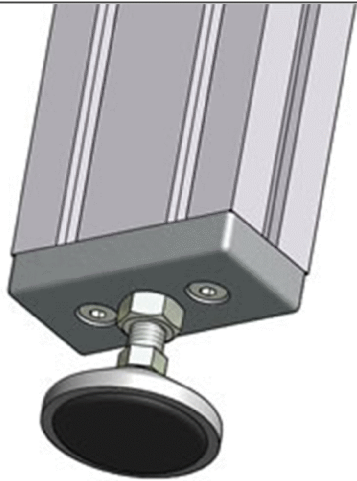
- Cast aluminum, powder coated gray

- Qty 2 M8x22 SHCS

- Thread Dia. - 12 mm

- Thread Pitch - 1.75mm

- Weight - .162 kg



ASSEMBLY

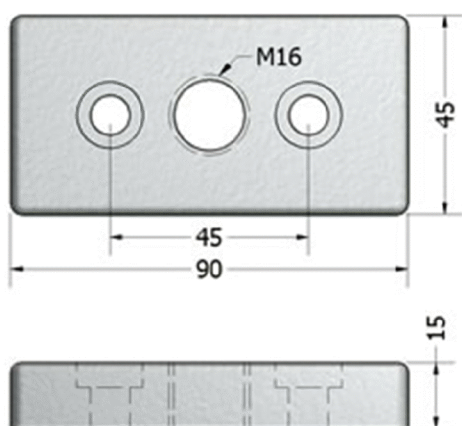
- Tap both holes on end of 45x90 using M8 Forming Tap,
Part # 26.1082

- Insert supplied M8x25 screws thru holes in plate and tighten to
profile



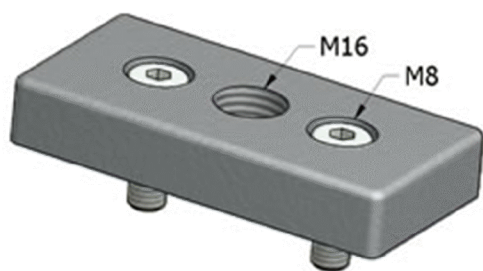
Base Plate 45x90 M16 Thread

Part. N° 21.1040



APPLICATIONS

- Attach M16 leveler to end of 45x90 profile



TECHN. DATA / ITEMS SUPPLIED



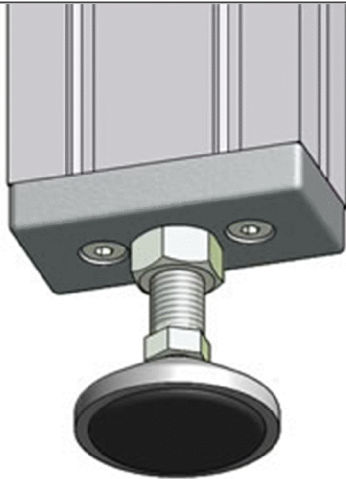
- Cast aluminum, powder coated gray

- Qty 2 M8x22 SHCS

- Thread Dia. - 16 mm

- Thread Pitch - 2 mm

- Weight - .160 kg



ASSEMBLY

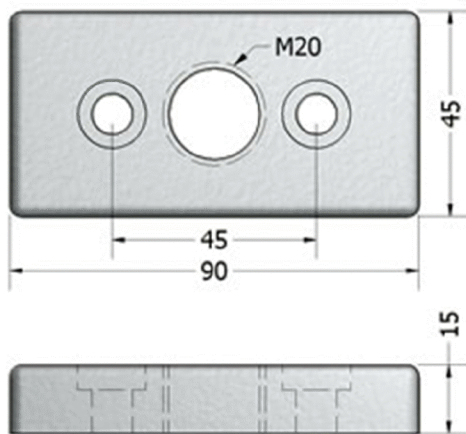
- Tap both holes on end of 45x90 using M8 Forming Tap,
Part # 26.1082

- Insert supplied M8x25 screws thru holes in plate and tighten to
profile



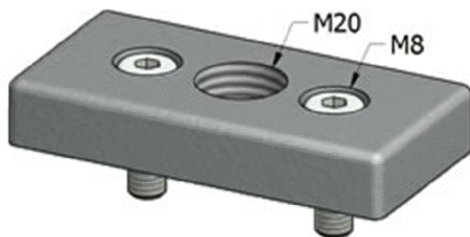
Base Plate 45x90 M20 Thread

Part. N° 21.1047



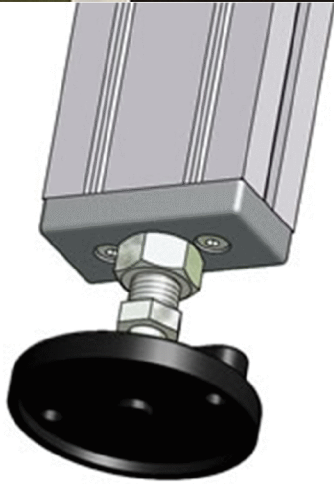
APPLICATIONS

- Attach M20 leveler to end of 45x90 profile



TECHN. DATA / ITEMS SUPPLIED

- Cast aluminum, powder coated gray
- Qty 2 M8x22 SHCS
- Thread Dia. - 20 mm
- Thread Pitch - 2.5 mm
- Weight - .156 kg



ASSEMBLY

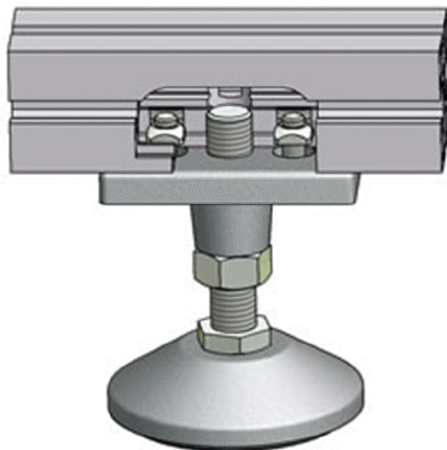
- Tap both holes on end of 45x90 using M8 Forming Tap,
Part # 26.1082

- Insert supplied M8x25 screws thru holes in plate and tighten to
profile



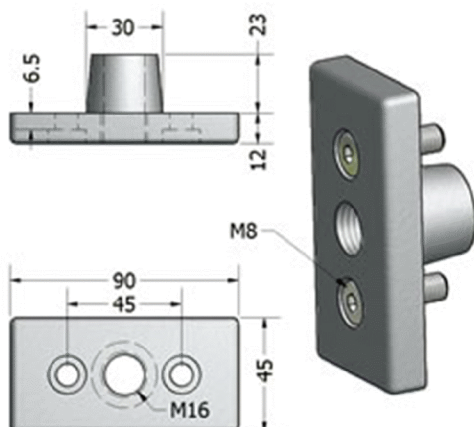
Base & Transport Plate 45x90 GD

Part. N° 21.1136



APPLICATIONS

- Attach M16 leveler to end of 45x90 profile
- Attach M16 leveler to side of any profile 45mm or greater



TECHN. DATA / ITEMS SUPPLIED



- Cast aluminum, powder coated gray

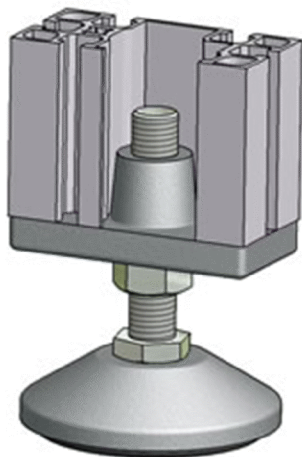
- Qty 2 M8x25 SHCS

- Square nuts for side installation sold separately

- Thread Dia. - 16mm

- Thread Pitch - 2mm

- Weight - .135 kg



ASSEMBLY

- Tap both holes on end of 45x90 using M8 Forming Tap,
Part # 26.1082

- Insert cone side of plate into profile cavity & fasten using supplied
M8x25 screws

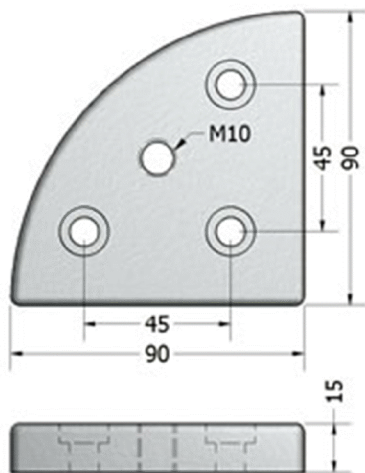
- For side installation use supplied M8x25 SHCS & order
two M8 Square Nuts With Position Fixing

- For side installation drill $\varnothing 17$ mm hole for leveler clearance



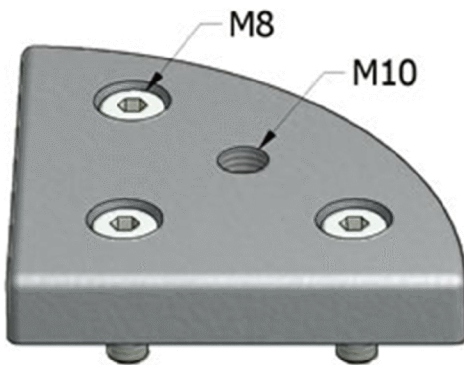
Base Plate 90R90° M10 Thread

Part. N° 21.0009



APPLICATIONS

- Attach M10 leveler to end of 90R90° Profile



TECHN. DATA / ITEMS SUPPLIED



- Cast aluminum, powder coated gray

- Qty 3 M8x25 SHCS

- Thread Dia. - 10 mm

- Thread Pitch - 1.5 mm

- Weight - .277 kg



ASSEMBLY

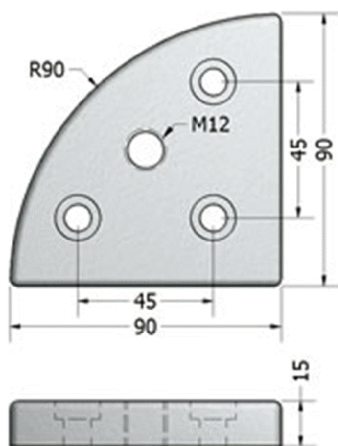
- Tap three holes on end of 90R90° Profile using M8 Forming Tap, Part # 26.1082

- Insert supplied M8x25 screws thru holes in plate and tighten to profile



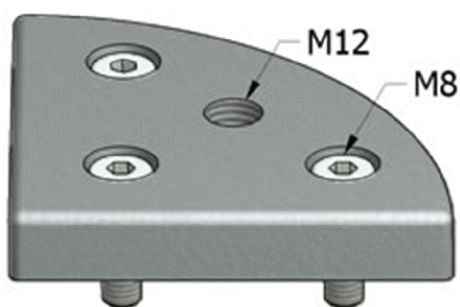
Base Plate 90R90° M12 Thread

Part. N° 21.0010



APPLICATIONS

- Attach M12 leveler to end of 90R90° Profile



TECHN. DATA / ITEMS SUPPLIED



- Cast aluminum, powder coated gray

- Qty 3 M8x25 SHCS

- Thread Dia. - 12 mm

- Thread Pitch - 1.75 mm

- Weight - .275 kg



ASSEMBLY

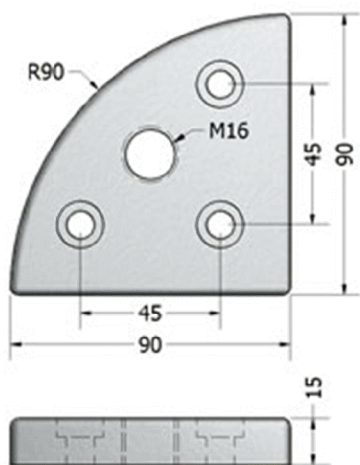
- Tap three holes on end of 90R90° Profile using M8 Forming Tap, Part # 26.1082

- Insert supplied M8x25 screws thru holes in plate and tighten to profile



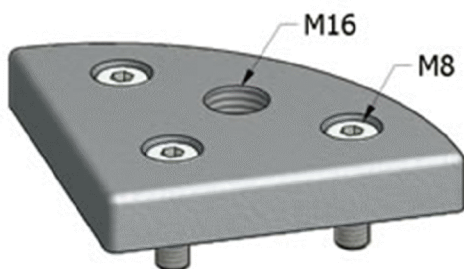
Base Plate 90R90° M16 Thread

Part. N° 21.0011



APPLICATIONS

- Attach M16 leveler to end of 90R90° Profile



TECHN. DATA / ITEMS SUPPLIED



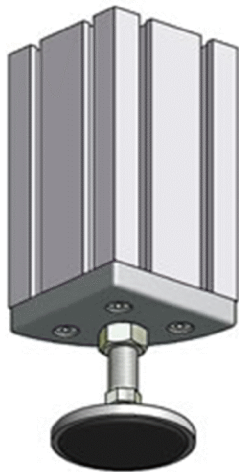
- Cast aluminum, powder coated gray

- Qty 3 M8x22 SHCS

- Thread Dia. - 16 mm

- Thread Pitch - 2 mm

- Weight - .272 kg



ASSEMBLY

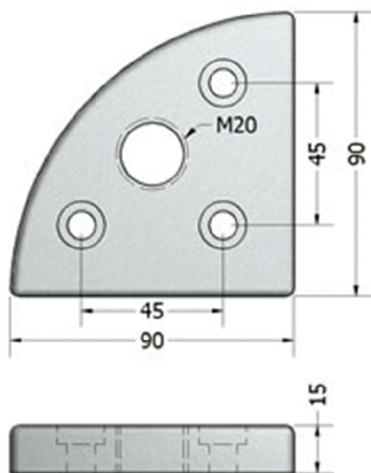
- Tap three holes on end of 90R90° Profile using M8 Forming Tap, Part # 26.1082

- Insert supplied M8x25 screws thru holes in plate and tighten to profile



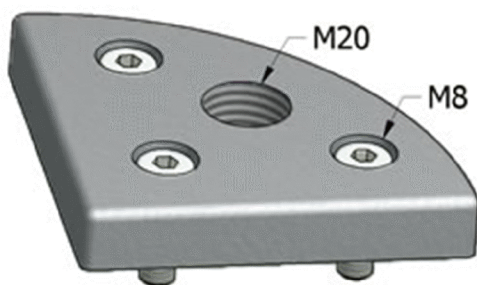
Base Plate 90R90° M20 Thread

Part. N° 21.0012



APPLICATIONS

- Attach M20 leveler to end of 90R90° Profile



TECHN. DATA / ITEMS SUPPLIED



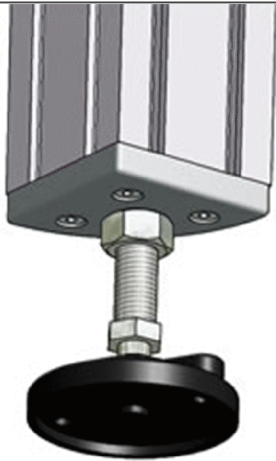
- Cast aluminum, powder coated gray

- Qty 3 M8x22 SHCS

- Thread Dia. - 20 mm

- Thread Pitch - 2.5 mm

- Weight - .268 kg



ASSEMBLY

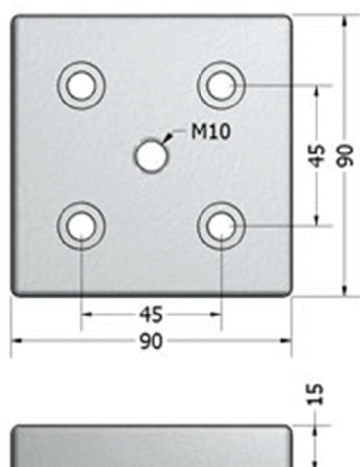
- Tap three holes on end of 90R90° Profile using M8 Forming Tap, Part # 26.1082

- Insert supplied M8x25 screws thru holes in plate and tighten to profile



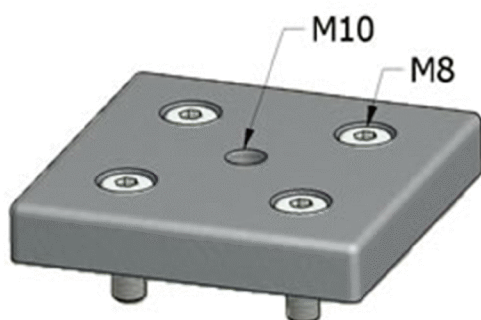
Base Plate 90x90 M10 Thread

Part. N° 21.1041



APPLICATIONS

- Attach M10 leveler to end of 90x90L profile



TECHN. DATA / ITEMS SUPPLIED



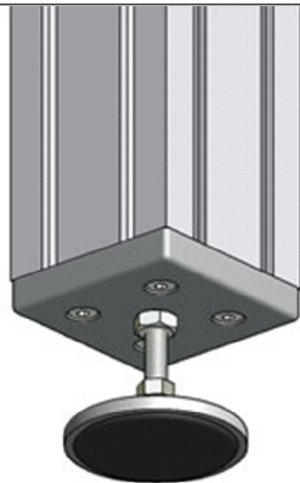
- Cast aluminum, powder coated gray

- Qty 4 M8x22 SHCS

- Thread Dia. - 10mm

- Thread Pitch - 1.5mm

- Weight - .332 kg



ASSEMBLY

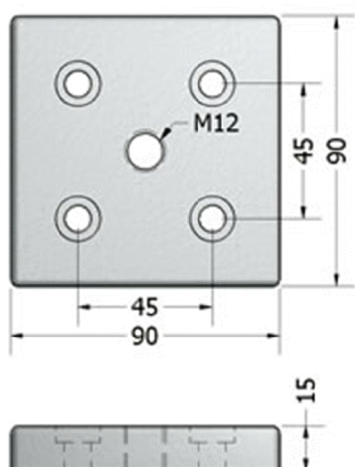
- Tap four holes on end of 90x90L Profile using M8 Forming Tap, Part # 26.1082

- Insert supplied M8x25 screws thru holes in plate and tighten to profile



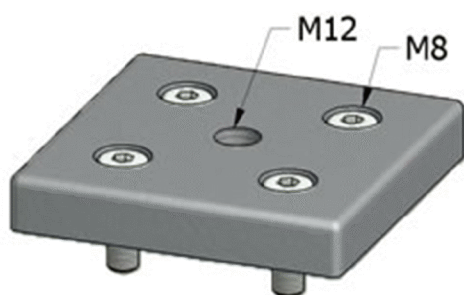
Base Plate 90x90 M12 Thread

Part. N° 21.1042



APPLICATIONS

- Attach M12 leveler to end of 90x90L profile



TECHN. DATA / ITEMS SUPPLIED



- Cast aluminum, powder coated gray

- Qty 4 M8x22 SHCS

- Thread Dia. - 12 mm

- Thread Pitch - 1.75 mm

- Weight - .330 kg



ASSEMBLY

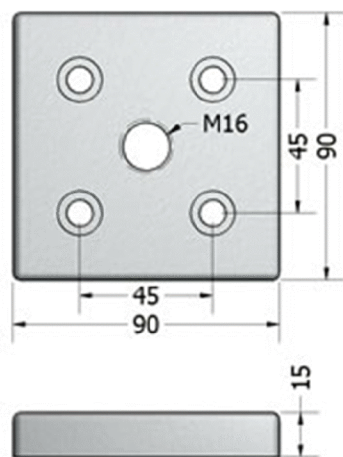
- Tap four holes on end of 90x90L Profile using M8 Forming Tap, Part # 26.1082

- Insert supplied M8x25 screws thru holes in plate and tighten to profile



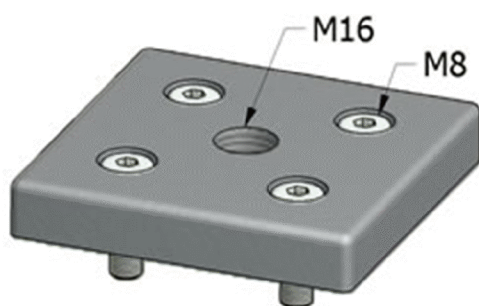
Base Plate 90x90 M16 Thread

Part. N° 21.1043



APPLICATIONS

- Attach M16 leveler to end of 90x90L profile



TECHN. DATA / ITEMS SUPPLIED



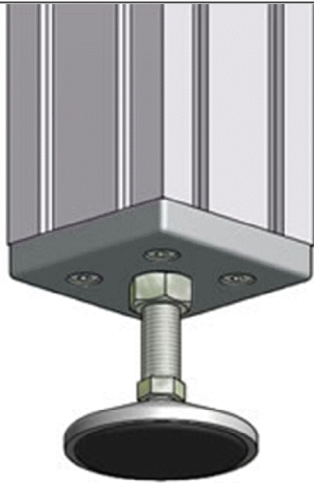
- Cast aluminum, powder coated gray

- Qty 4 M8x22 SHCS

- Thread Dia. - 16 mm

- Thread Pitch - 2 mm

- Weight - .330 kg



ASSEMBLY

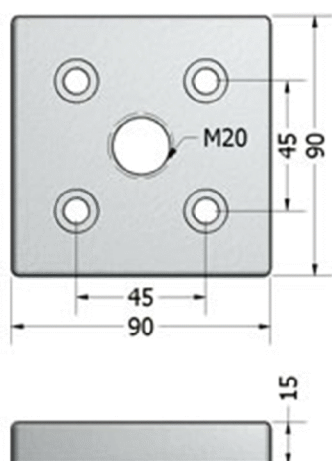
- Tap four holes on end of 90x90L Profile using M8 Forming Tap, Part # 26.1082

- Insert supplied M8x25 screws thru holes in plate and tighten to profile



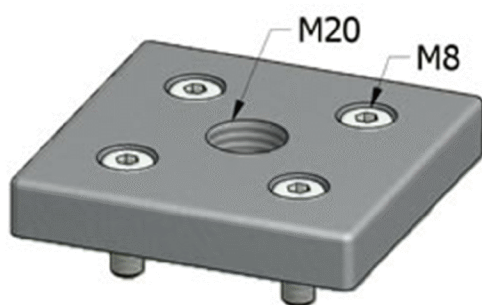
Base Plate 90x90 M20 Thread

Part. N° 21.1057



APPLICATIONS

- Attach M20 leveler to end of 90x90L profile



TECHN. DATA / ITEMS SUPPLIED



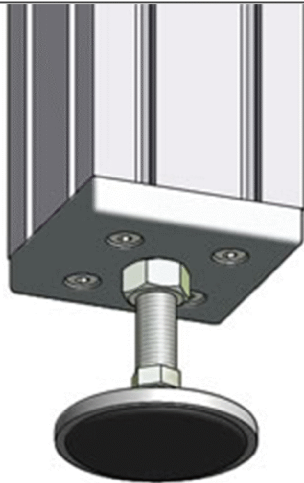
- Cast aluminum, powder coated gray

- Qty 4 M8x22 SHCS

- Thread Dia. - 20 mm

- Thread Pitch - 2.5 mm

- Weight - .290 kg



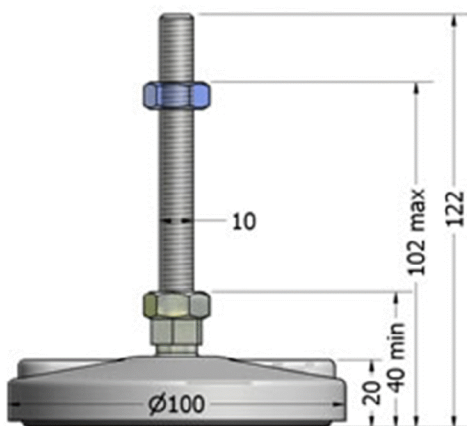
ASSEMBLY

- Tap four holes on end of 90x90L Profile using M8 Forming Tap, Part # 26.1082

- Insert supplied M8x25 screws thru holes in plate and tighten to profile

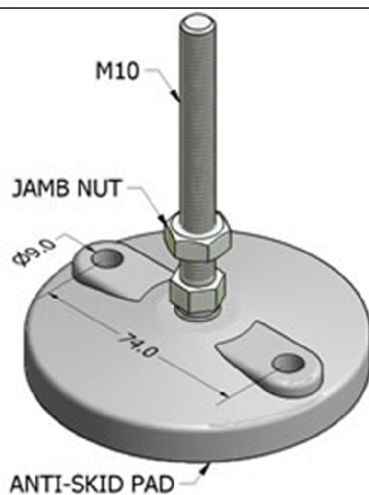
M10 Plastic Leveling Pad With Lag Holes

Part. N° 21.1846



APPLICATIONS

- Leveling of machine guarding, tables etc. that need to be lag bolted to the floor.



TECHN. DATA / ITEMS SUPPLIED



- Threaded M10 steel stud, zinc plated

- Polyamide plastic base, gray

- hard NBR rubber anti-skid pad, black

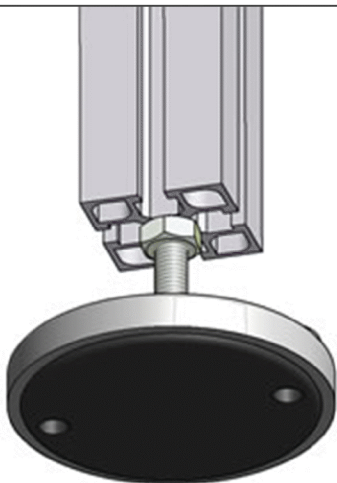
- Steel jamb nut, zinc plated

- Thread pitch - 1.5 mm

- Stud swivel max. - 15°

- Suggested design Height - 51 mm (2")

- Load max - 1000 kg



ASSEMBLY

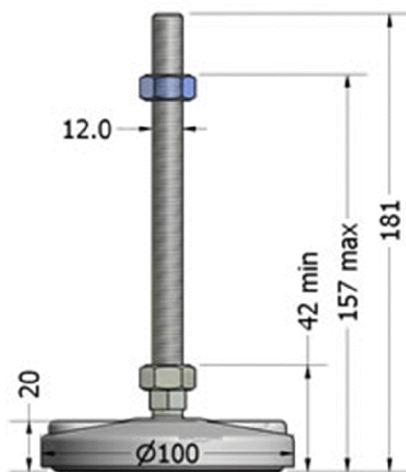
- Mount to 45x90 profiles using [Base Plate, Part # 21.1038](#)

- Mount to 90x90 profiles using [Base Plate, Part # 21.1041](#)

- **For mounting directly to profile**, bore out center hole $\varnothing 8.5\text{mm}$ & tap M10x1.5, 40mm deep

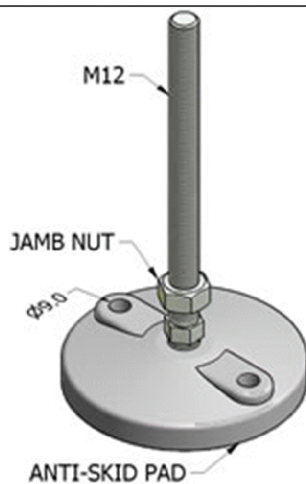
M12 Plastic Leveling Pad With Lag Holes

Part. N° 21.1847



APPLICATIONS

- Leveling of machine guarding, tables etc. that need to be lag bolted to the floor.



TECHN. DATA / ITEMS SUPPLIED



- Threaded M12 steel stud, zinc plated

- Polyamide plastic base, gray

- hard NBR rubber anti-skid pad, black

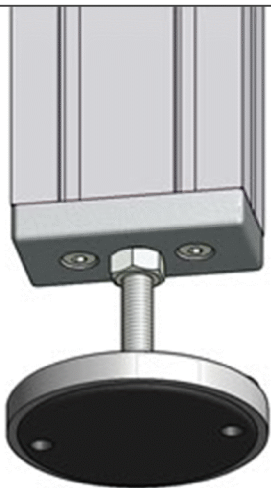
- Steel jamb nut, zinc plated

- Thread pitch - 1.75 mm

- Stud swivel max. - 15°

- Suggested design Height - 51 mm (2")

- Load max - 1000 kg



ASSEMBLY

- Mount to 45x90 profiles using [Base Plate, Part # 21.1039](#)

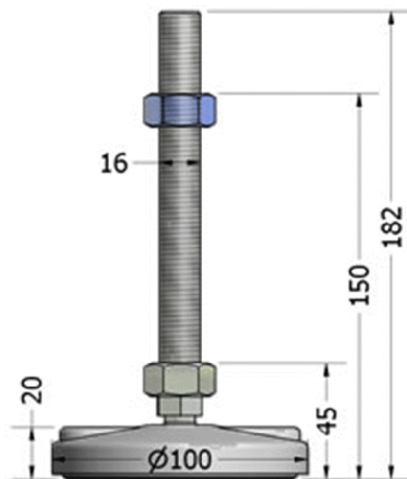
- Mount to 90x90 profiles using [Base Plate, Part # 21.1042](#)

-For mounting directly to profile, bore out center hole $\varnothing 10.2\text{mm}$ & tap M12x1.75, 140mm deep (extra long tap required)



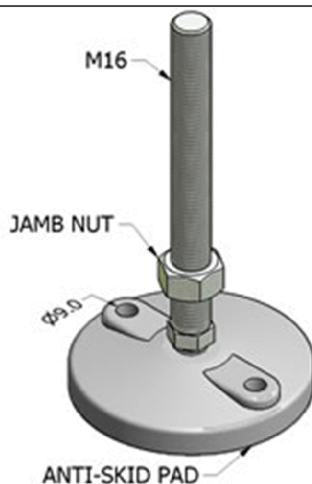
M16 Plastic Leveling Pad With Lag Holes

Part. N° 21.1848



APPLICATIONS

- Leveling of machine guarding, tables etc. that need to be lag bolted to the floor.



TECHN. DATA / ITEMS SUPPLIED



- Threaded M16 steel stud, zinc plated

- Polyamide plastic base, gray

- hard NBR rubber anti-skid pad, black

- Steel jamb nut, zinc plated

- Thread pitch - 2 mm

- Stud swivel max. - 15°

- Suggested design Height - 64 mm (2.5")

- Load max - 1000 kg



ASSEMBLY

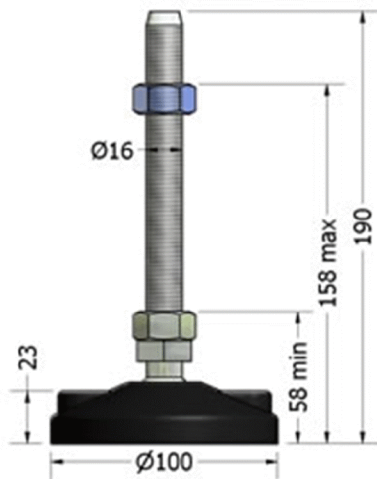
- Mount to 45x90 profiles using Base Plate, Part # 21.1040

- Mount to 90x90 profiles using Base Plate, Part # 21.1043



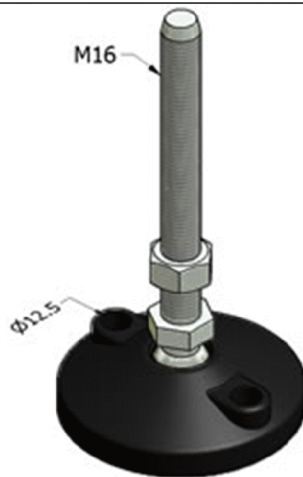
M16 Black Plastic Leveling Pad With Lag Holes

Part. N° 21.1141



APPLICATIONS

- Leveling of machine frames, custom tables, work benches, etc. that need to be lag bolted to the floor.



TECHN. DATA / ITEMS SUPPLIED



- Threaded M16 steel stud, zinc plated

- Polyamide plastic base, black

- No anti-skid pad

- Steel jamb nut, zinc plated

- Thread pitch - 2 mm

- Stud swivel max. - 15°

- Suggested design Height - 75 mm (3")

- Load max - 1800 kg



ASSEMBLY

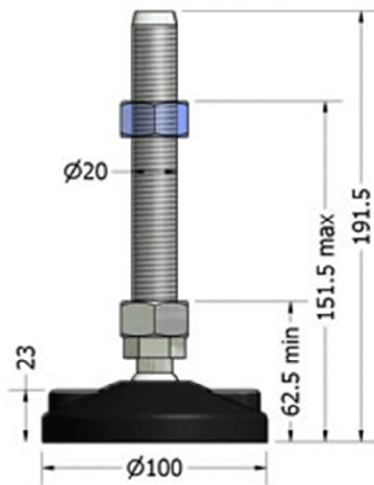
- Mount to 45x90 profiles using [Base Plate, Part # 21.1040](#)

- Mount to 90x90 profiles using [Base Plate, Part # 21.1043](#)



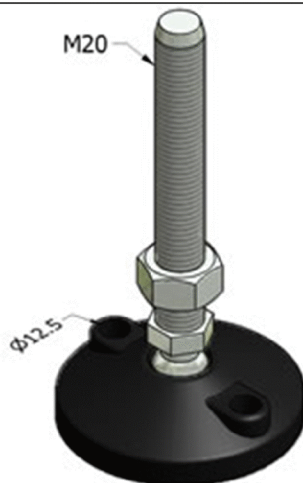
M20 Black Plastic Leveling Pad With Lag Holes

Part. N° 21.1075



APPLICATIONS

- Leveling of machine frames, custom tables, work benches, etc. that need to be lag bolted to the floor.



TECHN. DATA / ITEMS SUPPLIED



- Threaded M20 steel stud, zinc plated

- Polyamide plastic base, black

- No anti-skid pad

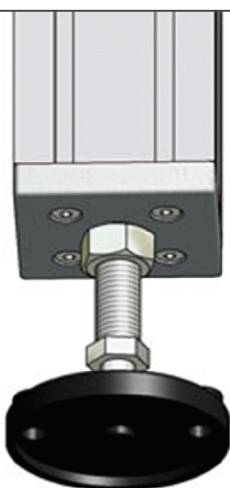
- Steel jamb nut, zinc plated

- Thread pitch - 2.5 mm

- Stud swivel max. - 15°

- Suggested design Height - 75 mm (3")

- Load max - 1800 kg



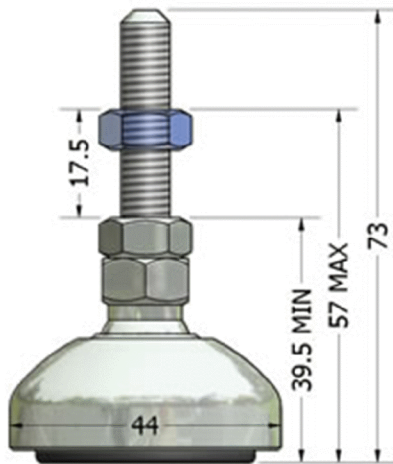
ASSEMBLY

- Mount to 45x90 profiles using Base Plate, Part # 21.1047

- Mount to 90x90 profiles using Base Plate, Part # 21.1057

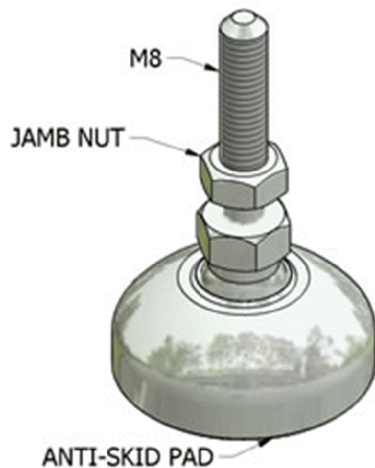
Foot VA Stainless M8 Leveler

Part. N° 21.1865



APPLICATIONS

- Leveling foot for machine bases, machine frames & machine guards
- Clean room & wash down environments



TECHN. DATA / ITEMS SUPPLIED



- Stainless steel base & M8 stud

- Stainless steel jamb nut

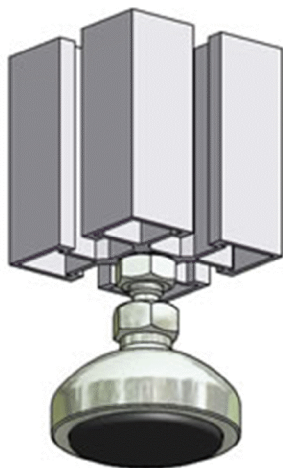
- hard rubber anti-skid pad, black

- Stud swivel max. - 3.5°

- Suggested Design Height - 45mm (1.75")

- Load max - 1000 kg

- Weight - .186 kg



ASSEMBLY

- Thread center bore of profile M8x1.25 using M8 Forming Tap,
Part # 26.1082

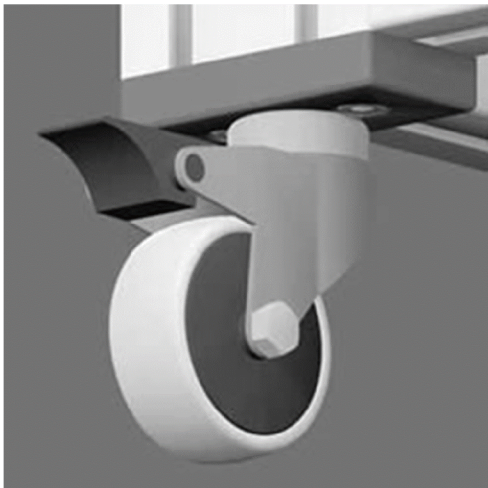
- Thread stud into profile & level frame using 14mm crescent
wrench

- Once leveled tighten jamb nut against profile using 13mm
crescent wrench



Swivel Caster With Brake

Part. N° 21.1120

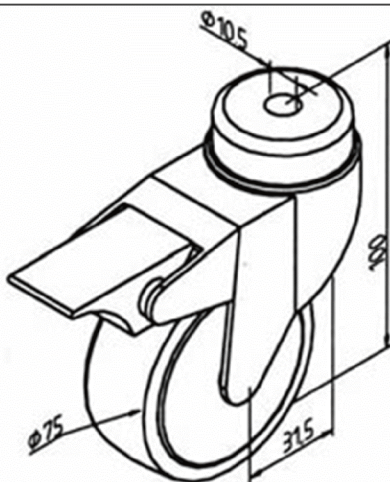


APPLICATIONS

- Workstations

- Carts

- Tables





TECHN. DATA / ITEMS SUPPLIED

- Steel, Zinc Plated

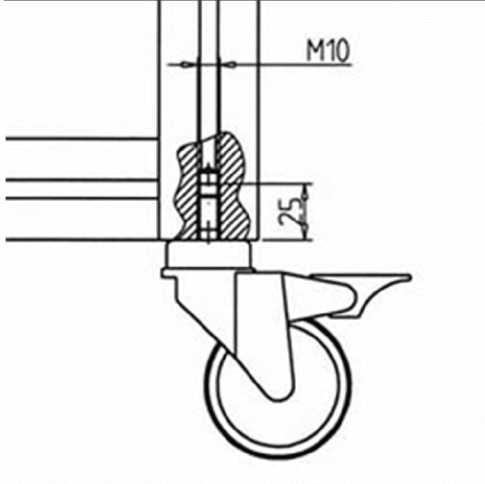
- Gray non-marking rubber tire

- M10x30 SHCS

- Total lock brake locks rotation of tire & swivel

- Load max. - 50kg (110 lbs)

- Weight - .25 kg



ASSEMBLY

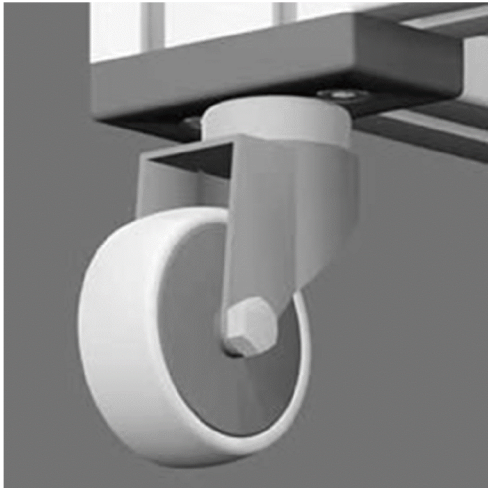
- Bore out profile center hole $\varnothing 8.5\text{mm}$ & tap M10x1.5, 25mm DP

- Mount to larger profiles using an M10 base & transport plate



Swivel Caster Without Brake

Part. N° 21.1118

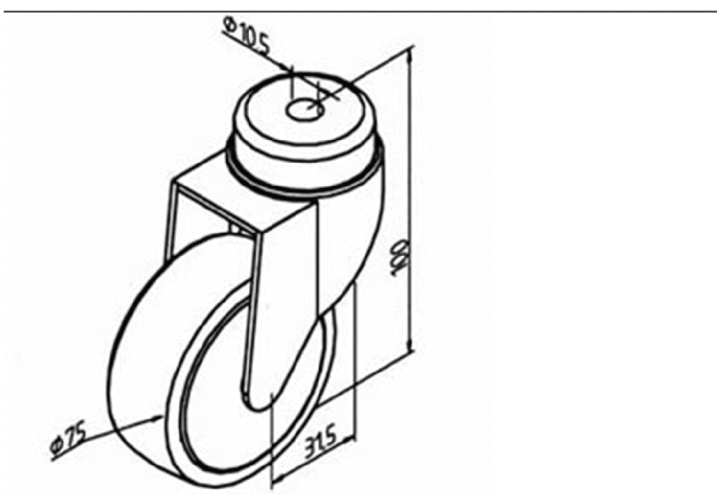


APPLICATIONS

- Workstations

- Carts

- Tables





TECHN. DATA / ITEMS SUPPLIED

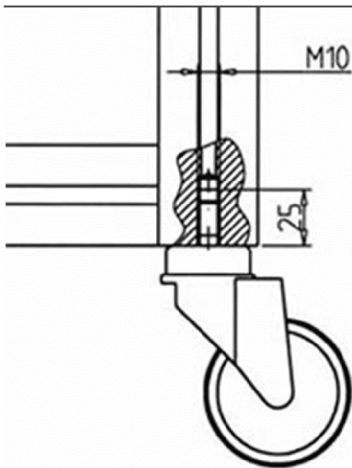
- Steel, Zinc Plated

- Gray non-marking rubber tire

- M10x30 SHCS

Load max. - 50kg (110 lbs)

- Weight - .25 kg



ASSEMBLY

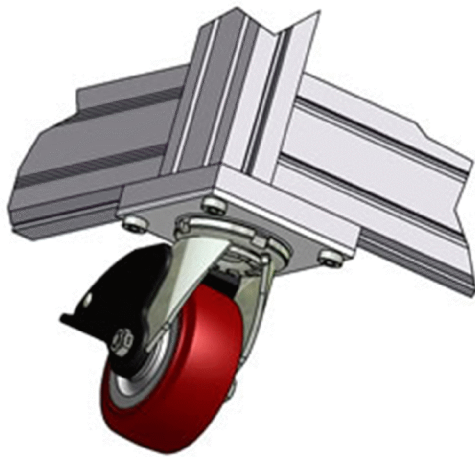
- Bore out profile center hole $\varnothing 8.5\text{mm}$ & tap M10x1.5, 25mm DP

- Mount to larger profiles using an M10 base & transport plate



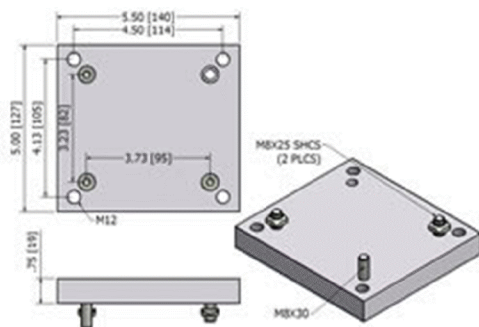
Heavy Duty Swivel Caster Mounting Plate

Part. N° 21.9406



APPLICATIONS

- Mounting of Heavy Duty 5" Caster, part # 21.9406



[Click For Larger Image](#)

TECHN. DATA / ITEMS SUPPLIED



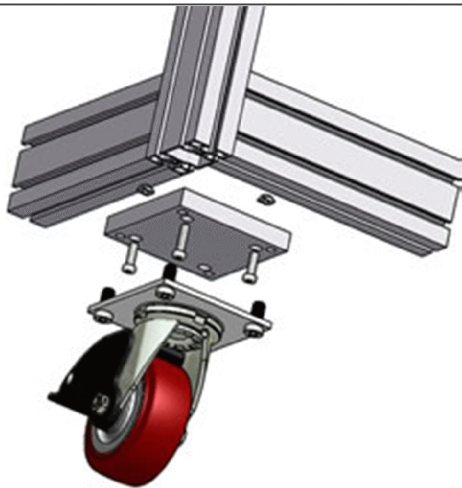
- 3/4" aluminum mill finish

- Qty 2 M8x25 SHCS

- Qty 1 M8x30 SHCS

-Qty 2 M8 Square Nuts

- Weight - .95kg



ASSEMBLY

- Tap end hole of vertical profile M8x1.25 using [M8 Roll Form Tap 26.1082](#) & fasten plate to vertical using supplied M8x30 screw

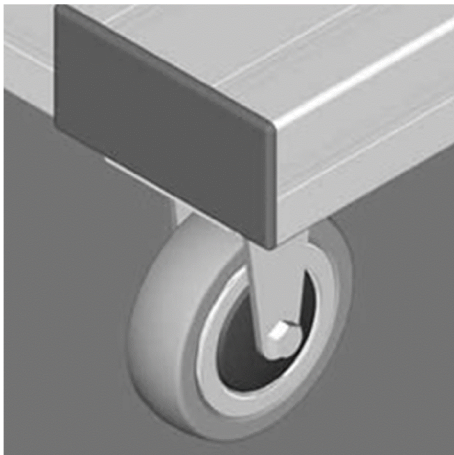
- Press M8 square nuts into t-slots & fasten plate to frame using supplied M8x25 screws

- Connect castor to plate using M12x20 screws that come with castor.



Rigid Caster

Part. N° 21.1475



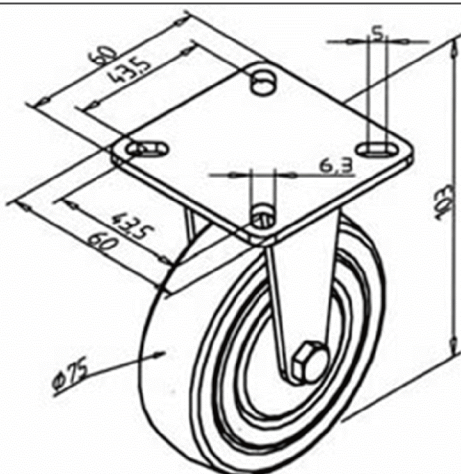
APPLICATIONS

- Rigid casters usually go on the front of cart making it easier to guide by preventing unwanted side to side motion.

- Workstations

- Carts

- Tables



TECHN. DATA / ITEMS SUPPLIED

- Steel, Zinc Plated

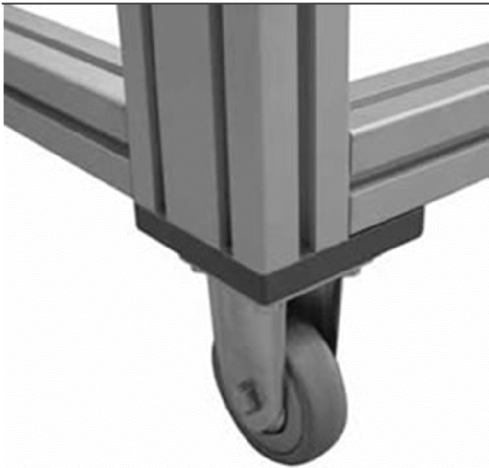
- Gray non-marking rubber tire

- Qty4, M6x16 SHCS for attaching to Fixing Plate, Part # 21.1476

- If mounting directly to t-slots order qty 4, M6 square nuts

- Load max. - 50kg (110 lbs)

- Weight - .35 kg



ASSEMBLY

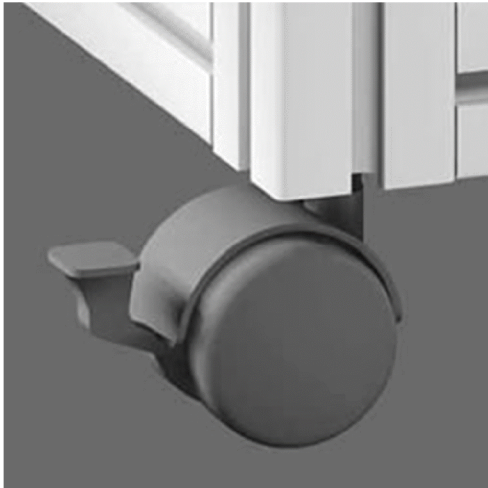
- Fasten to profile using Fixing Plate, Part # 21.1476

- Fasten directly to profile sides 90mm or larger using supplied M6 screws & M6 nuts (sold separately)



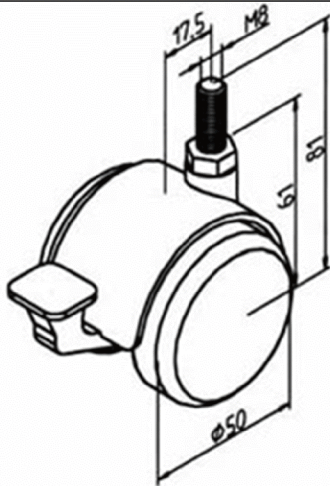
Furniture Wheel With Brake

Part. N° 21.1153



APPLICATIONS

- Light office furniture & tables that roll on carpet



TECHN. DATA / ITEMS SUPPLIED

- Housing, polyamide plastic, black



- Steel, zinc plated, M8 stud

- Threaded stud pitch - 1.25mm

- Load max. - 30 kg (66 lbs)

- Weight - .08 kg



ASSEMBLY

- Thread center bore of profile M8x1.25 using M8 Forming Tap, Part # 26.1082

- Snap stud into plastic wheel housing

- Use a 12mm crescent wrench to tighten stud into profile



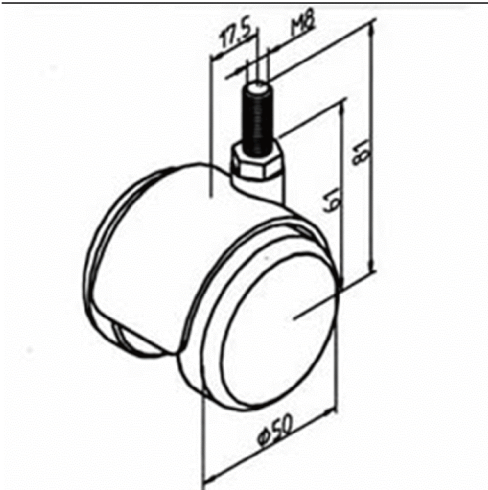
Furniture Wheel Without Brake

Part. N° 21.1105



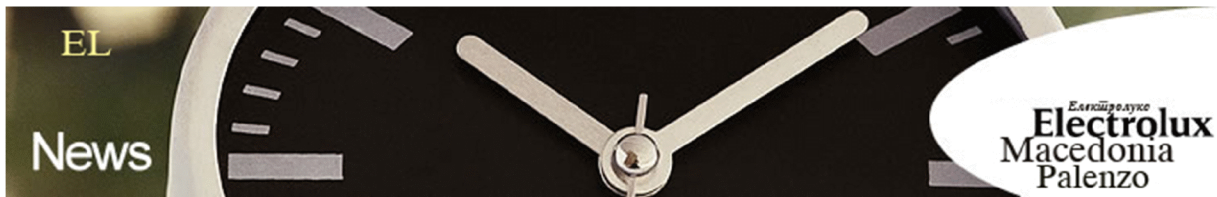
APPLICATIONS

- Light office furniture & tables that roll on carpet



TECHN. DATA / ITEMS SUPPLIED

- Housing, polyamide plastic, black



- Steel, zinc plated, M8 stud

- Threaded stud pitch - 1.25mm

- Load max. - 30 kg (66 lbs)

- Weight - .076 kg



ASSEMBLY

- Thread center bore of profile M8x1.25 using M8 Forming Tap, Part # 26.1082

- Snap stud into plastic wheel housing

- Use a 12mm crescent wrench to tighten stud into profile
