

P15

15 mm COMPACT valves - threaded and for sub-base body

- Low standard power consumption (0,32W): low power consumption electropilot B10 (standard version with LED)
- Quick response times
- High flow rate: the development of the traditional UNIVER spool technology permits high flow rate values
- Compact design: the valve body (10mm) allows reduced overall dimensions
- Complete solution
- Threaded body (P15F) and body for sub-base (P15B) in the following versions: 5/2 - 5/3 - 3/2+3/2
- External and multipolar electrical connections
- TC serial transmission system
- Maximum application flexibility
- Modular sub-base (singles and doubles) for a high versatility in the composition of valve manifolds
- Simplified installation
- Easy installation of tubes and fittings thanks to connections being all on the same side



TECHNICAL CHARACTERISTICS

| | |
|----------------------------|--|
| Ambient temperature | -5 ÷ +50 °C |
| Fluid temperature | max +50 °C |
| Fluid | filtered air 10 µm not dehumidified, lubricated or not |
| Commutation system | spool |
| Ways/Positions | 3/2+3/2, 5/2, 5/3 |
| Pressure | electric control = max 9 bar pneumatic control = max 10 bar |
| Control | indirect electro-pneumatic, pneumatic |
| Return | mechanical spring, pneumomechanical spring |
| Connections | P15F: G1/8, P15B: G1/8 - tube Ø 4-6-8 |
| Nominal flow rate (NI/min) | 5/2 = 800 5/3 = 720 3/2+3/2 = 720 |

CONSTRUCTIVE CHARACTERISTICS

| | |
|------------------------|---------------------------------|
| Valve body | zamak |
| Seals | nitrile rubber |
| Sub-base and actuators | selfextinguishing technopolymer |
| Spool | aluminum |

ELECTRIC FEATURES

| | |
|-------------------|---------------------------------------|
| Electropilot | B10 |
| Voltage | 24 V DC (± 10%) |
| Power consumption | holding 0,32 W, pick-up 5,5 W (25 ms) |
| Protection degree | IP65 |
| Manual override | button with tool |

CODIFICATION KEY

| | | | | | | | | | |
|---|---|---|---|---|---|---|---|---|---|
| P | 1 | 5 | F | 2 | 4 | 4 | 2 | 4 | D |
| | 1 | | | 2 | 3 | 4 | 5 | | 6 |

| | | |
|-----------------|---------------|---------------------|
| 1 Series | 2 Type | 3 Control 14 |
|-----------------|---------------|---------------------|

- | | | |
|------------------------------|--------------------------|--------------------------------|
| P15F = threaded valve | 2 = 5/2 | 3 = pneumatic amplified |
| P15B = valve for base | 3 = 5/3 c.c. | 4 = electric amplified |
| | 4 = 5/3 o.c. | |
| | 5 = 5/3 p.c. | |
| | 6 = 3/2+3/2 NC-NC | |
| | 7 = 3/2+3/2 NC-NO | |
| | 8 = 3/2+3/2 NO-NO | |

| | | |
|--------------------|------------------|------------------|
| 4 Return 12 | 5 Voltage | 6 Variant |
|--------------------|------------------|------------------|

- | | | |
|------------------------------------|---------------------|--|
| 0 = pneumomechanical spring | 24 = 24 V DC | D = external servo-assistance of the pilot on valve body (P15 = M5) |
| 1 = mechanical spring | | |
| 3 = pneumatic amplified | | |
| 4 = electric amplified | | |

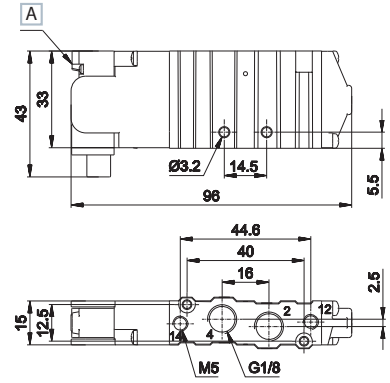
o.c. = open centres c.c. = closed centres p.c. = pressurized centres

Single electric impulse



Weight (Kg): 0,138

| | Symbol | Control | Return | Pressure bar | Times (ms) | | Part no. |
|-----|--------|--------------------|--------------------------|-----------------|------------|------|-----------|
| | | | | | Ecc. | Dis. | |
| 5/2 | | electric amplified | pneumo mechanical spring | 1,9÷9 | 15 | 24 | P15F24024 |
| 5/2 | | electric amplified | mechanical spring | 2÷9 | 12 | 21 | P15F24124 |



A Manual override

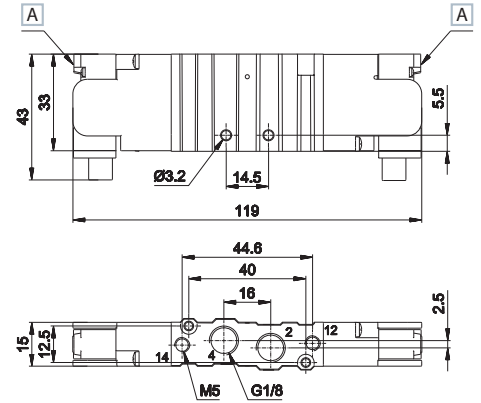
2 - 4 = Use
14 = Control
12 = Return

Double electric impulse



Weight (Kg): 0,158

| | Symbol | Control | Return | Pressure bar | Times (ms) | | Part no. |
|-----------------|--------|--------------------|--------------------|-----------------|------------|------|-----------|
| | | | | | Ecc. | Dis. | |
| 5/2 | | electric amplified | electric amplified | 0,7÷9 | 11 | 11 | P15F24424 |
| 5/3 c.c. | | electric amplified | electric amplified | 1,6÷9 | 11 | 35 | P15F34424 |
| 5/3 o.c. | | electric amplified | electric amplified | 1,6÷9 | 11 | 35 | P15F44424 |
| 5/3 p.c. | | electric amplified | electric amplified | 1,6÷9 | 11 | 35 | P15F54424 |
| 3/2 NC + 3/2 NC | | electric amplified | electric amplified | 1,5÷9 | 14 | 16 | P15F64424 |
| 3/2 NC + 3/2 NO | | electric amplified | electric amplified | 1,5÷9 | 14 | 16 | P15F74424 |
| 3/2 NO + 3/2 NO | | electric amplified | electric amplified | 1,5÷9 | 14 | 16 | P15F84424 |

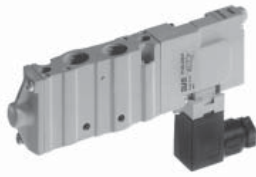


A Manual override

2 - 4 = Use
14 = Control
12 = Return

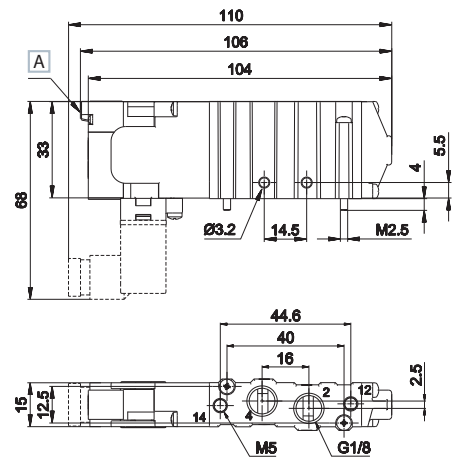
o.c. = open centres c.c. = closed centres p.c. = pressurized centres

Single electric impulse



Weight (Kg): 0,142

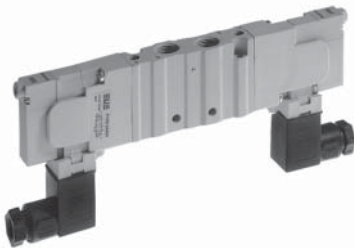
| | Symbol | Control | Return | Pressure bar | Times (ms) | | Part no. |
|-----|--------|--------------------|--------------------------|-----------------|------------|--------|-----------|
| | | | | | En. | De-en. | |
| 5/2 | | electric amplified | pneumo mechanical spring | 1,9÷9 | 15 | 24 | P15D24024 |
| 5/2 | | electric amplified | mechanical spring | 2÷9 | 12 | 21 | P15D24124 |



A Manual override

2 - 4 = Use
14 = Control
12 = Return

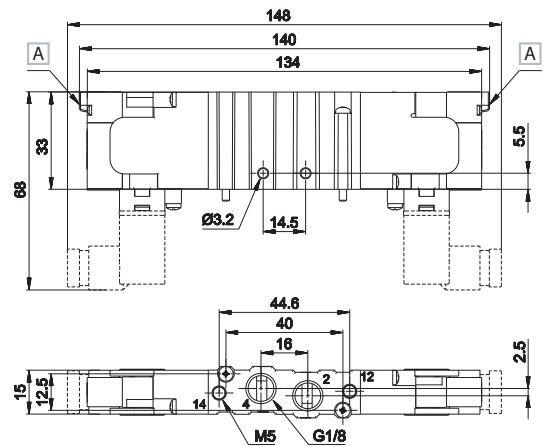
Double electric impulse



> AM-5109 connector not included

Weight (Kg): 0,166

| | Symbol | Control | Return | Pressure bar | Times (ms) | | Part no. |
|-----------------------|--------|--------------------|--------------------|-----------------|------------|--------|-----------|
| | | | | | En. | De-en. | |
| 5/2 | | electric amplified | electric amplified | 0,7÷9 | 16 | 16 | P15D24424 |
| 5/3 c.c. | | electric amplified | electric amplified | 1,6÷9 | 11 | 35 | P15D34424 |
| 5/3 o.c. | | electric amplified | electric amplified | 1,6÷9 | 11 | 35 | P15D44424 |
| 5/3 p.c. | | electric amplified | electric amplified | 1,6÷9 | 11 | 35 | P15D54424 |
| 3/2 NC + 3/2 NC | | electric amplified | electric amplified | 1,5÷9 | 14 | 16 | P15D64424 |
| 3/2 NC + 3/2 NO | | electric amplified | electric amplified | 1,5÷9 | 14 | 16 | P15D74424 |
| 3/2 NO + 3/2 NO | | electric amplified | electric amplified | 1,5÷9 | 14 | 16 | P15D84424 |



A Manual override

2 - 4 = Use
14 = Control
12 = Return

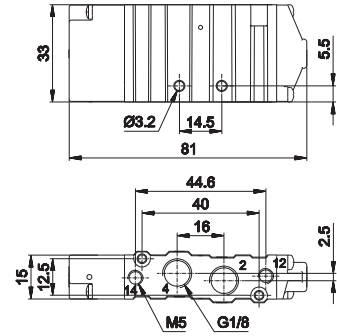
o.c. = open centres c.c. = closed centres p.c. = pressurized centres

Single electric impulse



Weight (Kg): 0,042

| | Symbol | Control | Return | Pressure bar | Times (ms) | | Part no. |
|-----|--------|---------------------|--------------------------|-----------------|------------|--------|----------|
| | | | | | En. | De-en. | |
| 5/2 | | pneumatic amplified | pneumo mechanical spring | 1,9÷10 | 11 | 15 | P15F230 |
| 5/2 | | pneumatic amplified | mechanical spring | 2÷10 | 10 | 14 | P15F231 |



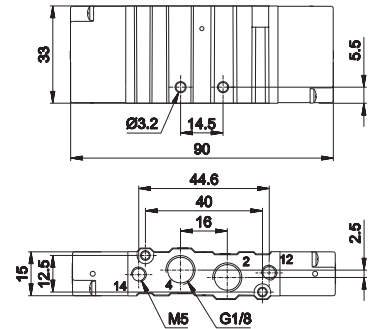
2 - 4 = Use
14 = Control
12 = Return

Double electric impulse



Weight (Kg): 0,044

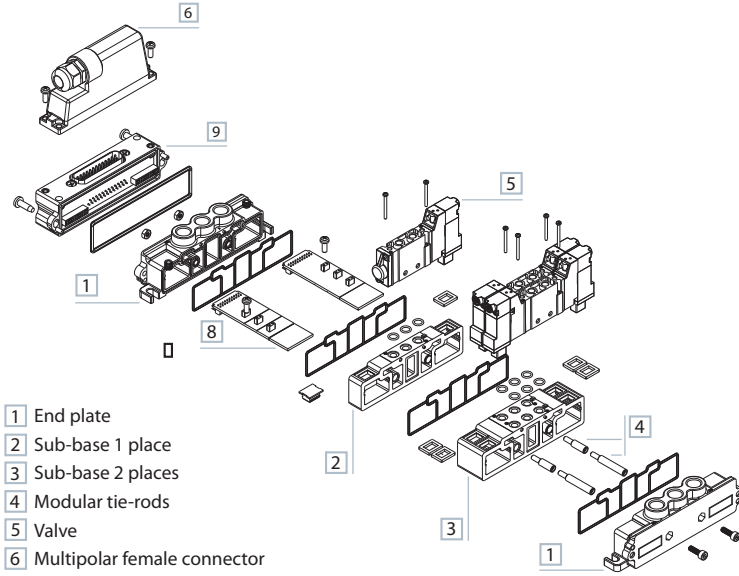
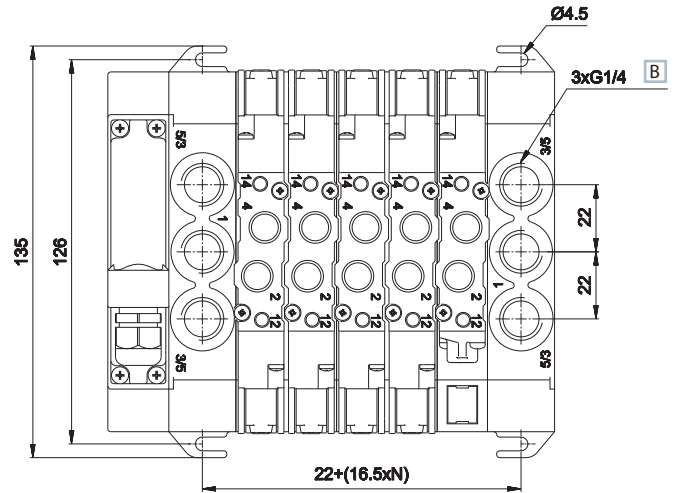
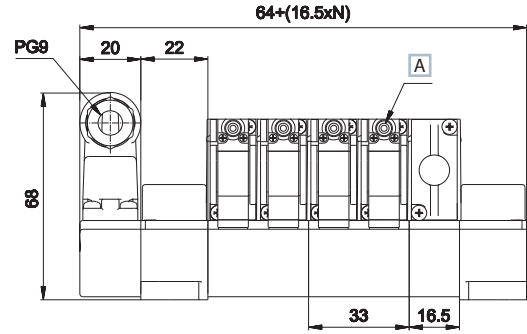
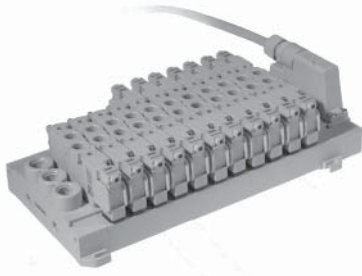
| | Symbol | Control | Return | Pressure bar | Times (ms) | | Part no. |
|-----------------|--------|---------------------|---------------------|-----------------|------------|--------|----------|
| | | | | | En. | De-en. | |
| 5/2 | | pneumatic amplified | pneumatic amplified | 0,7÷10 | 10 | 10 | P15F233 |
| 5/3 c.c. | | pneumatic amplified | pneumatic amplified | 1,6÷10 | 9 | 21 | P15F333 |
| 5/3 o.c. | | pneumatic amplified | pneumatic amplified | 1,6÷10 | 9 | 21 | P15F433 |
| 5/3 p.c. | | pneumatic amplified | pneumatic amplified | 1,6÷10 | 9 | 21 | P15F533 |
| 3/2 NC + 3/2 NC | | pneumatic amplified | pneumatic amplified | 1,3÷10 | 10 | 14 | P15F633 |
| 3/2 NC + 3/2 NO | | pneumatic amplified | pneumatic amplified | 1,3÷10 | 10 | 14 | P15F733 |
| 3/2 NO + 3/2 NO | | pneumatic amplified | pneumatic amplified | 1,3÷10 | 10 | 14 | P15F833 |



2 - 4 = Use
14 = Control
12 = Return

o.c. = open centres c.c. = closed centres p.c. = pressurized centres

Integrated electric connection



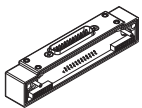
- 1 End plate
- 2 Sub-base 1 place
- 3 Sub-base 2 places
- 4 Modular tie-rods
- 5 Valve
- 6 Multipolar female connector
- 7 Single connector
- 8 Bus connection card
- 9 Multipole connection module

- 1 = Supply port
- 2 - 4 = Use
- 3 - 5 = Exhaust
- 14 = Control
- 12 = Return

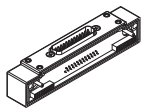
- A Manual override
- B Tightening torque
- G1/4 = max 10 Nm

N = Number of valve places

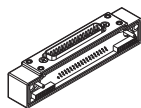
| TIM1524 | TIM151806 | TIM1536 | P15SF100 | P15SF110 | P15SF200 | P15SF210 |
|---------|-----------|---------|----------|----------|----------|----------|
|---------|-----------|---------|----------|----------|----------|----------|



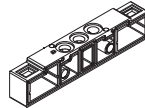
connection module
25 poles male
12+12 coils
type D-sub
weight: 0,047 Kg



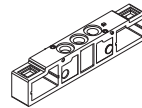
connection module
25 poles male
18 coils, side 14
6 coils, side 12
type D-sub
weight: 0,055 Kg



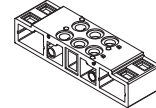
connection module
37 poles male
16+16 coils
type D-sub
weight: 0,057 Kg



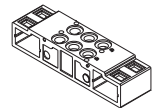
sub-base 1 place
weight: 0,037 Kg



sub-base 1 place
1-3-5 closed
weight: 0,038 Kg

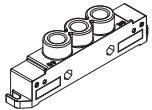


sub-base 2 places
weight: 0,073 Kg

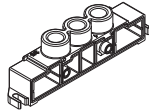


sub-base 2 places
1-3-5 closed
weight: 0,074 Kg

| P15SF500 | P15SF505 | P15SF550 | P15SF560 | P15SF570 | P15SS**01MC | P15SS**..M |
|----------|----------|----------|----------|----------|-------------|------------|
|----------|----------|----------|----------|----------|-------------|------------|



supply plate G1/4 left
for TIM module
weight: 0,064 Kg



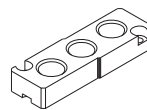
supply plate G1/4 right
weight: 0,065 Kg



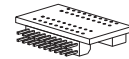
supply pressure
separator plate
weight: 0,003 Kg



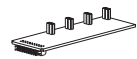
covering plate for
unused valve place
weight: 0,007 Kg



intermediate supply plate
for threaded version
weight: 0,011 Kg

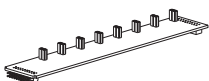


U-bus connection
card, male
** = side 14 or 12
weight: 0,004 Kg

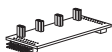


bus connection
card, male
** = side 14 or 12
.. = 04, 06, 08 places
weight: 0,009 Kg 04 places
0,010 Kg 06 places
0,013 Kg 08 places

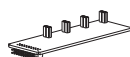
| P15SS**08MF | P15SS**04MFP | P15SS**04MP | P15STR01 | P15STR02 | P15STR05 |
|-------------|--------------|-------------|----------|----------|----------|
|-------------|--------------|-------------|----------|----------|----------|



bus connection card
male/female
** = side 14 or 12
weight: 0,014 Kg



bus connection card
male/female
extension
** = side 14 or 12
weight: 0,008 Kg



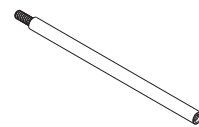
bus card
extension
** = side 14 or 12
weight: 0,006 Kg



modular tie-rods
1 valve place
(package 100 pcs.)
weight: 0,003 Kg



modular tie-rods
2 valve places
(package 100 pcs.)
weight: 0,007 Kg



modular tie-rods
5 valve places
(package 100 pcs.)
weight: 0,018 Kg

AZ4-SN004A

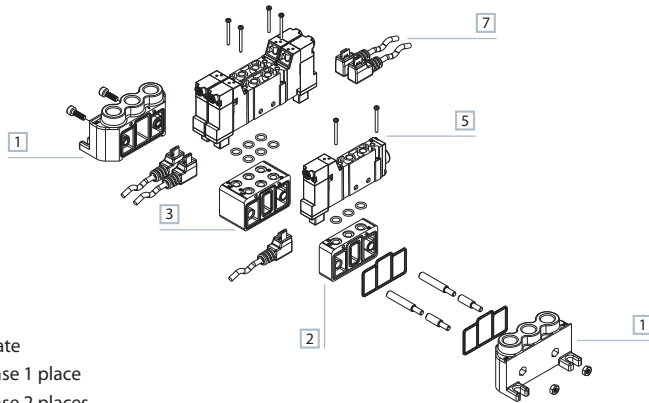
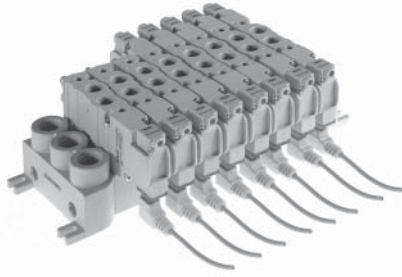
100 nuts M4 for tie-rods

AZ4-VN0414

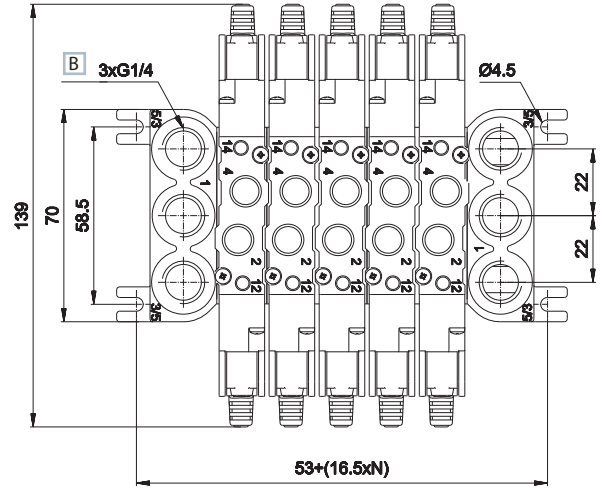
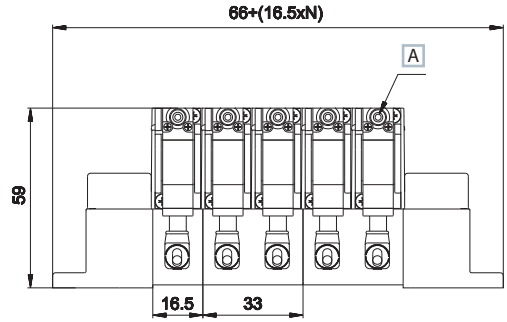
100 screws 4x14 for tie-rods

5
COMPACT valves

Electric connection with external connector



- 1 End plate
- 2 Sub-base 1 place
- 3 Sub-base 2 places
- 4 Modular tie-rods
- 5 Valve
- 6 Multipolar female connector
- 7 Single connector
- 8 Bus connection card
- 9 Multipole connection module



- 1 = Supply port
- 2 - 4 = Use
- 3 - 5 = Exhaust
- 14 = Control
- 12 = Return
- N = Number of valve places
- A Manual override
- B Tightening torque
G1/4 = max 10 Nm

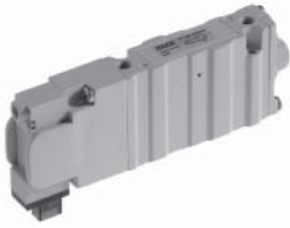
| P15SF300 | P15SF310 | P15SF400 | P15SF410 | P15SF515 | P15SF550 | P15SF560 |
|--------------------------------------|--|---------------------------------------|---|---|--|--|
| | | | | | | |
| sub-base 1 place weight: 0,023 Kg | sub-base 1 place 1-3-5 closed weight: 0,024 Kg | sub-base 2 places weight: 0,046 Kg | sub-base 2 places 1-3-5 closed weight: 0,048 Kg | supply plate right/left G1/4 weight: 0,050 Kg | supply pressure separator plate weight: 0,001 Kg | covering plate for unused valve place weight: 0,007 Kg |

| P15SF570 | P15STR01 | P15STR02 | P15STR05 |
|---|---|--|--|
| | | | |
| intermediate supply plate for threaded version weight: 0,009 Kg | modular tie-rods 1 valve place (package 100 pcs.) weight: 0,003 Kg | modular tie-rods 2 valve places (package 100 pcs.) weight: 0,007 Kg | modular tie-rods 5 valve places (package 100 pcs.) weight: 0,018 Kg |

AZ4-SN004A
100 nuts M4 for tie-rods

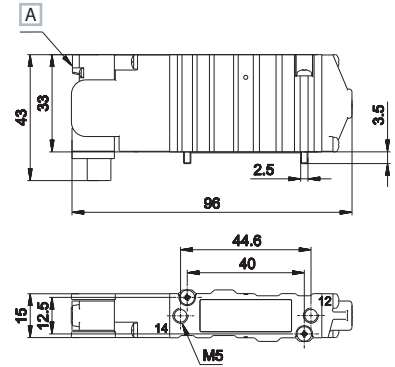
AZ4-VN0414
100 screws 4x14 for tie-rods

Single electric impulse



Weight (Kg): 0,138

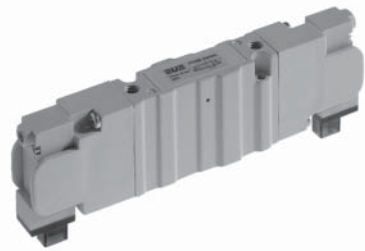
| | Symbol | Control | Return | Pressure bar | Times (ms) | | Part no. |
|-----|--------|--------------------|--------------------------|--------------|------------|--------|-----------|
| | | | | | En. | De-en. | |
| 5/2 | | electric amplified | pneumo mechanical spring | 1,9÷9 | 15 | 24 | P15B24024 |
| 5/2 | | electric amplified | mechanical spring | 2÷9 | 12 | 21 | P15B24124 |



A Manual override

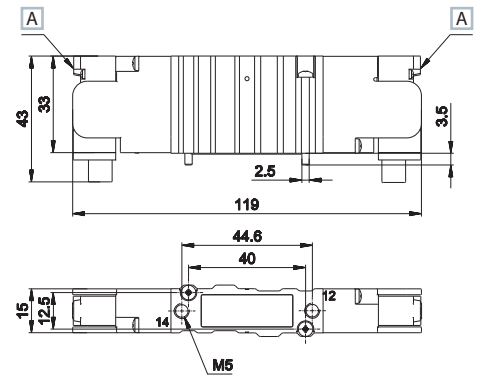
14 = Control
12 = Return

Double electric impulse



Weight (Kg): 0,158

| | Symbol | Control | Return | Pressure bar | Times (ms) | | Part no. |
|-----------------|--------|--------------------|--------------------|--------------|------------|--------|-----------|
| | | | | | En. | De-en. | |
| 5/2 | | electric amplified | electric amplified | 0,7÷9 | 11 | 11 | P15B24424 |
| 5/3 c.c. | | electric amplified | electric amplified | 1,6÷9 | 11 | 35 | P15B34424 |
| 5/3 o.c. | | electric amplified | electric amplified | 1,6÷9 | 11 | 35 | P15B44424 |
| 5/3 p.c. | | electric amplified | electric amplified | 1,6÷9 | 11 | 35 | P15B54424 |
| 3/2 NC + 3/2 NC | | electric amplified | electric amplified | 1,5÷9 | 14 | 16 | P15B64424 |
| 3/2 NC + 3/2 NO | | electric amplified | electric amplified | 1,5÷9 | 14 | 16 | P15B74424 |
| 3/2 NO + 3/2 NO | | electric amplified | electric amplified | 1,5÷9 | 14 | 16 | P15B84424 |



A Manual override

14 = Control
12 = Return

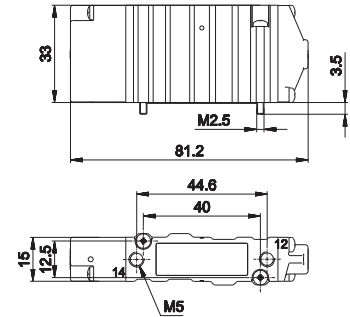
o.c. = open centres c.c. = closed centres p.c. = pressurized centres

Single pneumatic impulse



Weight (Kg): 0,127

| | Symbol | Control | Return | Pressure bar | Times (ms) | | Part no. |
|-----|--------|---------------------|--------------------------|-----------------|------------|--------|----------|
| | | | | | En. | De-en. | |
| 5/2 | | pneumatic amplified | pneumo mechanical spring | 1,9÷9 | 11 | 15 | P15B230 |
| 5/2 | | pneumatic amplified | mechanical spring | 2÷9 | 10 | 14 | P15B231 |



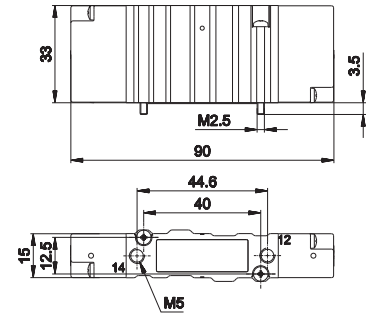
14 = Control
12 = Return

Double pneumatic impulse



Weight (Kg): 0,132

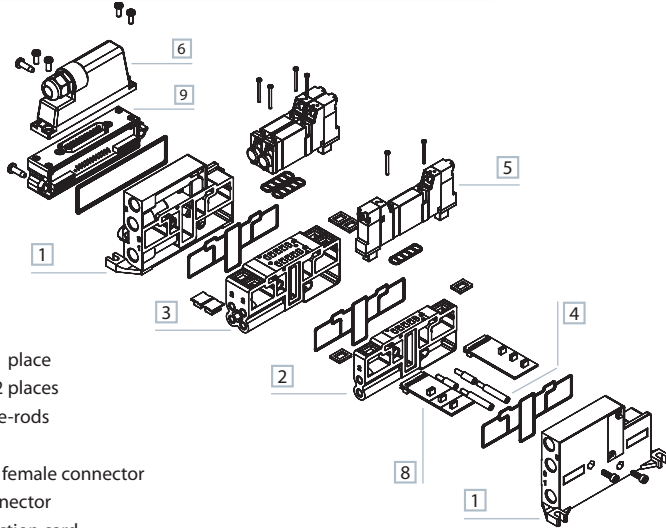
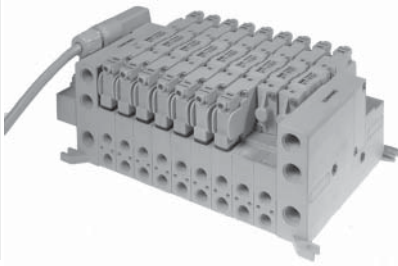
| | Symbol | Control | Return | Pressure bar | Times (ms) | | Part no. |
|-----------------|--------|---------------------|---------------------|-----------------|------------|--------|----------|
| | | | | | En. | De-en. | |
| 5/2 | | pneumatic amplified | pneumatic amplified | 0,7÷9 | 10 | 10 | P15B233 |
| 5/3 c.c. | | pneumatic amplified | pneumatic amplified | 1,6÷9 | 9 | 21 | P15B333 |
| 5/3 o.c. | | pneumatic amplified | pneumatic amplified | 1,6÷9 | 9 | 21 | P15B433 |
| 5/3 p.c. | | pneumatic amplified | pneumatic amplified | 1,6÷9 | 9 | 21 | P15B533 |
| 3/2 NC + 3/2 NC | | pneumatic amplified | pneumatic amplified | 1,3÷9 | 10 | 14 | P15B633 |
| 3/2 NC + 3/2 NO | | pneumatic amplified | pneumatic amplified | 1,3÷9 | 10 | 14 | P15B733 |
| 3/2 NO + 3/2 NO | | pneumatic amplified | pneumatic amplified | 1,3÷9 | 10 | 14 | P15B833 |



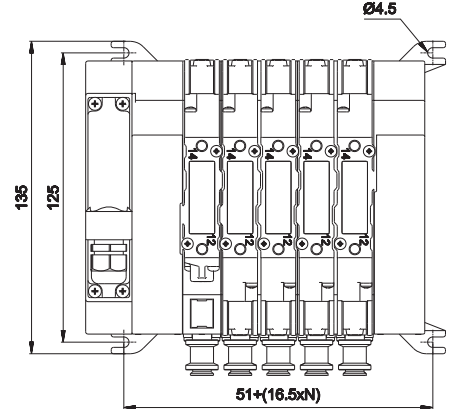
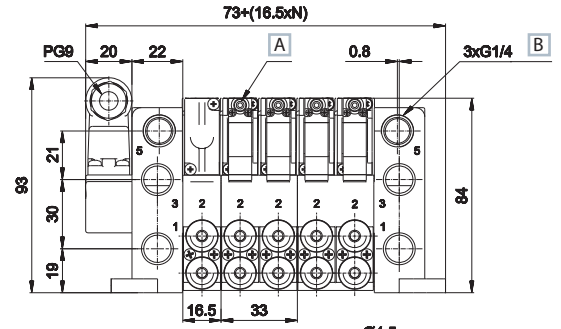
14 = Control
12 = Return

o.c. = open centres c.c. = closed centres p.c. = pressurized centres

Integrated electric connection



- 1 End plate
- 2 Sub-base 1 place
- 3 Sub-base 2 places
- 4 Modular tie-rods
- 5 Valve
- 6 Multipolar female connector
- 7 Single connector
- 8 Bus connection card
- 9 Multipole connection module



- 1 = Supply port
 - 2 - 4 = Use
 - 3 - 5 = Exhaust
 - 14 = Control
 - 12 = Return
- A Manual override
 - B Tightening torque
 - G1/4 = max 10 Nm
 - G1/8 = max 3 Nm

N = Number of valve places

| TIM1524 | TIM151806 | TIM1536 | P15SB100 | P15SB110 | P15SB200 | P15SB210 |
|---|---|--|--|---|--|--|
| | | | | | | |
| connection module 25 poles male 12+12 coils type D-sub weight: 0,047 Kg | connection module 25 poles male 18 coils side 14 6 coils side 12 type D-sub weight: 0,055 Kg | connection module 37 poles male 16+16 coils type D-sub weight: 0,057 Kg | sub-base 1 place side outlets G1/8 integrated version weight: 0,060 Kg | sub-base 1 place side outlets G1/8 integrated version 1-3-5 closed weight: 0,060 Kg | sub-base 2 places side outlets G1/8 weight: 0,133 Kg | sub-base 2 places side outlets G1/8 integrated version 1-3-5 closed weight: 0,133 Kg |
| P15SB300 | P15SB310 | P15SB400 | P15SB410 | P15SB500 | P15SB505 | P15SB550 |
| | | | | | | |
| sub-base 1 place side outlets for quick couplings integrated version weight: 0,060 Kg | sub-base 1 place side outlets for quick couplings 1-3-5 closed weight: 0,060 Kg | sub-base 2 places side outlets for quick couplings integrated version weight: 0,133 Kg | sub-base 2 places side outlets for quick couplings 1-3-5 closed weight: 0,133 Kg | supply plate G1/8 for TIM module weight: 0,127 Kg | supply plate G1/4 right weight: 0,124 Kg | supply pressure separator plate weight: 0,003 Kg |
| P15SB560 | P15SB570 | P15SS**01MC | P15SS**..M | P15SS**08MF | P15SS**04MFP | P15SS**04MP |
| | | | | | | |
| covering plate for unused valve place weight: 0,007 Kg | intermediate supply plate for sub-base weight: 0,016 Kg | U-bus connection card, male ** = lato14 o 12 weight: 0,004 Kg | bus connection card male ** = side14 or 12 .. = 04, 06, 08 places weight: 0,009 Kg 04 places 0,010 Kg 06 places 0,013 Kg 08 places | bus connection card male/female extension ** = side14 or 12 weight: 0,014 Kg | bus connection card male/female extension ** = side14 or 12 weight: 0,008 Kg | bus card extension ** = side14 or 12 weight: 0,006 Kg |
| P15STR01 | P15STR02 | P15STR05 | GZR-V100.. | | | |
| | | | | | | |
| modular tie-rods 1 valve place (package 100 pcs.) weight: 0,003 Kg | modular tie-rods 2 valve places (package 100 pcs.) weight: 0,007 Kg | modular tie-rods 5 valve places (package 100 pcs.) weight: 0,018 Kg | fitting .. = 04, 06, 08 places weight: 0,013 Kg | AZ4-SN004A 100 nuts M4 for tie-rods | AZ4-VN0414 100 screws 4x14 for tie-rods | |

5
COMPACT valves

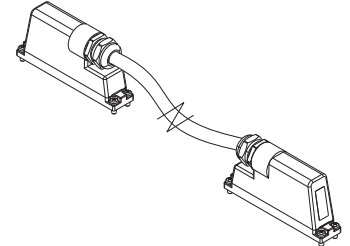
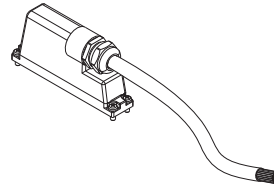
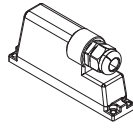
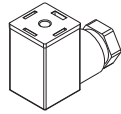
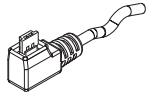
D-535U40300
D-535U40500

AM-5109

TSCFN24S000
TSCFN36S000

TSCFN24S0300
TSCFN24S0500
TSCFN24S1000
TSCFN32S0300
TSCFN32S0500
TSCFN32S1000

TSCFN16D0300
TSCFN16D0500
TSCFN16D1000



■ single connector with cable 3-5 m

■ 15 mm connector

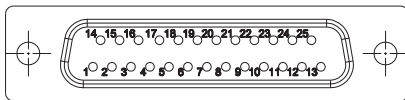
■ female connector 25/37 poles type D-sub no cable

■ female connector 25/37 poles type D-sub with cable 3-5-10 m

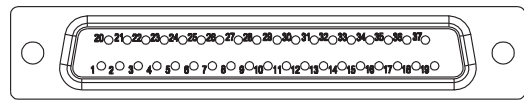
■ flying male/female connector sub D (upon request) prewired for 24 coils with cable Ø 8 mm (3-5-10 m length) suitable for mobile laying

Colour identification according to standard DIN 47100

Female D-SUB 25 poles for connection 12+12 coils



Female D-SUB 37 poles for connection 16+16 coils



| PIN No. | Colour | Coil | Control side | | Valve No. |
|---------|------------------------------------|------|--------------|-----------|-----------|
| | | | TIM1524 | TIM151806 | |
| 1 | white | 1 | 14 | 14 | 1 |
| 2 | brown | 2 | 12 | 12 | 1 |
| 3 | green | 3 | 14 | 14 | 2 |
| 4 | yellow | 4 | 12 | 12 | 2 |
| 5 | grey | 5 | 14 | 14 | 3 |
| 6 | pink | 6 | 12 | 12 | 3 |
| 7 | blue | 7 | 14 | 14 | 4 |
| 8 | red | 8 | 12 | 12 | 4 |
| 9 | black | 9 | 14 | 14 | 5 |
| 10 | violet | 10 | 12 | 12 | 5 |
| 11 | grey-pink | 11 | 14 | 14 | 6 |
| 12 | red-blue | 12 | 12 | 12 | 6 |
| 13 | white-green | 13 | 14 | 14 | 7 |
| 14 | brown-green | 14 | 12 | 14 | 7 |
| 15 | white-yellow | 15 | 14 | 14 | 8 |
| 16 | yellow-brown | 16 | 12 | 14 | 8 |
| 17 | white-grey | 17 | 14 | 14 | 9 |
| 18 | grey-brown | 18 | 12 | 14 | 9 |
| 19 | white-pink | 19 | 14 | 14 | 10 |
| 20 | pink-brown | 20 | 12 | 14 | 10 |
| 21 | white-blue | 21 | 14 | 14 | 11 |
| 22 | brown-blue | 22 | 12 | 14 | 11 |
| 23 | white-red | 23 | 14 | 14 | 12 |
| 24 | brown-red brown-black shield | | - | - | - |
| 25 | white-black | 24 | 12 | 14 | 12 |

| PIN No. | Colour | Coil | Control side | | Valve No. |
|---------|----------------------|---------------|--------------|--|-----------|
| | | | TIM1536 | | |
| 1 | white | 1 | 14 | | 1 |
| 2 | brown | 2 | 12 | | 1 |
| 3 | green | 3 | 14 | | 2 |
| 4 | yellow | 4 | 12 | | 2 |
| 5 | grey | 5 | 14 | | 3 |
| 6 | pink | 6 | 12 | | 3 |
| 7 | blue | 7 | 14 | | 4 |
| 8 | red | 8 | 12 | | 4 |
| 9 | black | 9 | 14 | | 5 |
| 10 | violet | 10 | 12 | | 5 |
| 11 | grey-pink | 11 | 14 | | 6 |
| 12 | red-blue | 12 | 12 | | 6 |
| 13 | white-green | 13 | 14 | | 7 |
| 14 | brown-green | 14 | 12 | | 7 |
| 15 | white-yellow | 15 | 14 | | 8 |
| 16 | yellow-brown | 16 | 12 | | 8 |
| 17 | white-grey | 17 | 14 | | 9 |
| 18 | grey-brown | 18 | 12 | | 9 |
| 19 | white-pink | 19 | 14 | | 10 |
| 20 | pink-brown | 20 | 12 | | 10 |
| 21 | white-blue | 21 | 14 | | 11 |
| 22 | brown-blue | 22 | 12 | | 11 |
| 23 | white-red | 23 | 14 | | 12 |
| 24 | brown-red | 24 | 12 | | 12 |
| 25 | white-black | 25 | 14 | | 12 |
| 26 | brown-black | 26 | 12 | | 13 |
| 27 | grey-green | 27 | 14 | | 14 |
| 28 | yellow-grey | 28 | 12 | | 14 |
| 29 | pink-green | 29 | 14 | | 15 |
| 30 | yellow-pink | 30 | 12 | | 15 |
| 31 | green-blue | 31 | 14 | | 16 |
| 32 | yellow-blue | 32 | 12 | | 16 |
| 33 | - | not used | - | | - |
| 34 | - | not used | - | | - |
| 35 | - | not used | - | | - |
| 36 | yellow-black | common | - | | - |
| 37 | yellow-red shield | common law | - | | - |